



The IHSAA governs the equitable participation in interscholastic athletics and activities that enrich the educational experience.

February 20, 2017

State Qualifying Dual Teams:

Congratulations on qualifying for the 2017 state dual team wrestling tournament this Saturday at the Bloomington Coliseum in Bloomington. We are looking forward to a great tournament on Saturday and wish you and your team the best of luck.

We do have a few things for you at this time. There is an attachment included that reviews the state final completely and provides a list of hotels that are holding rooms for the qualifying teams. It is up to you to contact one of the hotels and make your own arrangements today for this weekend.

Your coach will get a team packet on Friday (if they come to practice at the Coliseum) or Saturday at weigh-ins. The packet will contain the passes for the competing wrestlers and coaches (26) for the tournament. **ONLY 26 school representatives** will be allowed on the floor for the dual meet competition. They will also have 3 Official passes for the administration and three parking passes for the Roosevelt garage. **Please make arrangements for the coach to get the administrator passes and parking passes to your administration on Saturday.** Cheerleaders in uniform and the coach will be allowed access to the Coliseum without passes. **NO cheerleaders will be allowed on the floor, they will be required to cheer from the stands.**

If you have a trainer coming with the team we have one extra medical pass for that trainer. The Athletic Director will need to contact our office with the name of the trainer so that his/her pass can be put in the school packet. The trainer is not one of the 26 people mat side for the tournament.

If your school wins the first match, you will be part of the awards ceremony at the conclusion of the final round on Saturday. Remind your head coach that we have 26 slots for medallions for the team, which will include wrestlers and coaches and 4 slots that are for the trainer, athletic director, principal and superintendent. These will be the only people that will be allowed on the floor for the presentation of the medallions. Thanks for helping us with this in advance.

Please be sure to bring State Final Entry Form, page 37 of the Wrestling School Manual. This is to be turned in during the weigh-in on Saturday.

Again, if you have any questions my cell phone number is 217-430-8057.

Sincerely,

A handwritten signature in black ink that reads "Sam Knox". The signature is written in a cursive, slightly slanted style.

Sam Knox
Assistant Executive Director

Dual Team State Final Mailing.doc

Bloomington Hotels

Dual Team Wrestling 2017

Hotel	Telephone #	Price
Hawthorn Suites by Wyndham	309-829-8111	\$70-80
Ramada Limited Inn & Suites	309-828-0900	\$75-\$85
Baymont Inn & Suites	309-662-2811	\$69
Country Inns & Suites	309-828-7177	\$95
Chateau	309-662-2020	\$99

IHSA[®]
Dual Team Wrestling

Call: (309) 663-6377 FAX: (309) 663-7479



***Up-to-Date
Statistics
Due
February 22
before
10:00 am***

To: Boys Wrestling Dual Team Sectional Tournament Manager
Coach of the Sectional Dual Team advancing to the State Final

From: Sam Knox, Assistant Executive Director

Subject: Up-to-Date Statistics

Dual Team Sectional Manager:

At the conclusion of the championship match on Tuesday, February 21, please remind the coach of the team advancing from your Dual Team Sectional tournament to the State Final to complete the enclosed Up-to-Date Stats. This form can be found on page 37 of the online Boys Wrestling Manual for Schools. A copy of this form is attached for your reference. The Up-to-Date-Stats will be used in the official program for the State Final and by the media covering the tournament. You can copy this letter and include it with the other documents that are given to the Dual Team Sectional Winner.

Coach of the Sectional Dual Team Advancing to the State Final:

Since your school has qualified for the Dual Team Wrestling State Final tournament at the Bloomington Coliseum, Bloomington, you are required to complete the IHSA UP-TO-DATE DUAL TEAM WRESTLING STATISTICS form and fax (309/663-7479) it to the IHSA Office by 10:00 a.m. on Wednesday, February 22. This form can be found on page 37 of the online Boys Wrestling Manual for Schools. A copy of this form is attached for your reference. The Up-to-Date Stats will be used in the official program for the State Final and by the media covering the tournament at Bloomington.

Thank you in advance for your cooperation.

SK:cc

WR-STATS.doc



Illinois High School Association
 2715 McGraw Dr., Bloomington, IL 61704
 Phone: 309-663-6377
 Fax: 309-663-7479

Dual Team Wrestling State Final Entry Form With Up-to-Date Statistics

Print Form

The fields in this form will accept a cursor and can be filled out prior to printing.

Coach: Be sure to list cumulative statistics of all tournament roster wrestlers through the Dual Team Sectional. This form must be completed and FAXED to the IHSA Office so that it is received by 10:00 a.m., Wednesday, February 22, 2017. IHSA Fax number is (309) 663-7479 and is available 24 hours a day.

School Name Class 1A 2A 3A

NOTE: Statistics should include ONLY varsity competition (all dual meets and all tournaments) this season.

Name	Probable Starter	Certified Weight	Overall Season Record (All Matches)		Take-Downs	Pins For	Times Been Pinned
			W	L			
	<input type="radio"/>						
	<input type="radio"/>						
	<input type="radio"/>						
	<input type="radio"/>						
	<input type="radio"/>						
	<input type="radio"/>						
	<input type="radio"/>						
	<input type="radio"/>						
	<input type="radio"/>						
	<input type="radio"/>						
	<input type="radio"/>						
	<input type="radio"/>						
	<input type="radio"/>						
	<input type="radio"/>						
	<input type="radio"/>						
	<input type="radio"/>						
	<input type="radio"/>						
	<input type="radio"/>						
	<input type="radio"/>						
	<input type="radio"/>						
	<input type="radio"/>						
	<input type="radio"/>						
	<input type="radio"/>						
	<input type="radio"/>						
	<input type="radio"/>						
	<input type="radio"/>						
	<input type="radio"/>						
	<input type="radio"/>						

I certify that the above students are eligible under the IHSA eligibility standards to represent this high school in the Dual Team State Final Wrestling Tournament. In accordance with IHSA wrestling regulations, the weight control regulations establish the minimum weight at which wrestlers may compete in the Individual and Dual Team State Series.

Coach's Signature _____ Date _____

Principal's Signature _____ Date _____

IHSA Dual Team Tournament Procedures

Bloomington Coliseum

Bloomington, Illinois

Since your school has qualified for the 2017 IHSA Dual Team Wrestling State Final Tournament at the Bloomington Coliseum, Bloomington, Illinois, you should review information in this bulletin with your coaches, your wrestlers and their parent(s). It will make your trip to the State Tournament a more enjoyable experience.

ADMISSION: All coaches and wrestlers who have been issued a Participant Pass may enter through the Pass Gate. When entering, you must display your Participant Pass to the doorman. **YOU WILL NOT BE ADMITTED WITHOUT DISPLAYING YOUR PARTICIPANT PASS. ONLY 26 WILL BE ADMITTED TO THE FLOOR.**

Friday, February 24, 2017

PRACTICE:

Open Practice 5:30 p.m.-7:30 p.m. at the Bloomington Coliseum, Bloomington. Doors will not open prior to 5:30 p.m.

Saturday, February 25, 2017

SESSION TIMES AND WEIGH IN--

Session One:

6:00 a.m. -- Doors open for teams

7:00 a.m. -- Weigh in

7:45 a.m. -- (Approx.) Coaches Meeting

8:00 a.m. -- Doors Open

9:00 a.m. -- Quarterfinals (6 mats) Upper Bracket matches in Class 1A, 2A and 3A

11:00 a.m. -- (Approx.) Quarterfinals (6 mats) Lower Bracket matches in Class 1A, 2A and 3A

1:30 p.m. (Approx.) -- Semifinals (6 mats) Semi-finals in Class 1A, 2A and 3A

Saturday, February 25, 2017

Session Two:

5:00 p.m. -- Doors Open

6:00 p.m. -- Class 1A, 2A and 3A Consolation

6:00 p.m. -- Class 1A, 2A and 3A Championship

LOCKER ROOMS:

Locker rooms will be open at 6:00 a.m. and available to change and shower. All bags must be taken into the Coliseum and placed next to your chairs. **Official** weigh-in begins at 7:00 a.m. for all Classes. Since locker rooms are not assigned, coaches, managers, and athletes should make arrangements to protect their belongings and should not leave any valuables unprotected in the locker room during their warm-up, during competition, press conferences or award presentations. Teams should provide their own towels.

FOOD/COOLER:

After weigh-ins, any food brought in must be consumed in the South Club Lounge Area. Coolers will then be required to be put back on the bus or in the vans for the rest of the day.

APPROPRIATE DRESS FOR COACHES IS REQUIRED:

No Hats, Shorts, or T-shirts on the Competition Floor.

TICKET POLICY:

Tickets will be sold at the Bloomington Coliseum on Saturday, February 25, 2017. Doors will be open to the general public one hour before each session.

Ticket prices established by the IHSA for the IHSA State Team Tournament are as follows:

*Session I (Quarterfinal/Semifinal)	\$7.00
Session II (Final Session)	\$7.00

*Fans will be able to exit during the sessions and re-enter with hand stamp.

HOW SCHOOL PRESS CREDENTIALS ARE ISSUED:

School Media Passes need to be requested by the Principal prior to Thursday, February 23. The Passes must be picked up at the Pass Gate at the Bloomington Coliseum.

VARSITY CHEERLEADERS:

Each school competing in the State Team Tournament will be allowed to use the number of cheerleaders who participated at the varsity level during the regular season, as well as the school varsity mascot during the schools meet. Live mascots other than humans must be approved in advance by the Tournament Manager and the IHSA. **NO PASSES ARE REQUIRED** but each cheerleader must be in uniform and accompanied by the cheerleader sponsor through the **PASS GATE**. The varsity cheerleader squad and its sponsor will be admitted as a group at one time only. Uniformed varsity school mascots must accompany the varsity cheerleaders into the tournament. Cheerleaders will be required to cheer from the stands.

PASSES:

Schools qualifying for the Dual Team Wrestling State Final will receive twenty-six (26) **Participant Passes** to be used as required by the Terms and Conditions and three (3) **Administration Passes** to be used by school administration. Administration Passes will allow access to the north side Media area only – not to the mat area. School Media Passes need to be requested by the Principal prior to Thursday. They will be available at the Pass Gate. **Three (3) Parking Passes** for the Roosevelt Street Parking Garage are also in your packet you will receive upon arrival.

ACCESS TO COMPETITION FLOOR:

Your **Participant Pass**, properly displayed, will allow you access to the Competition Floor at times when your wrestler(s) are competing. You **WILL NOT** be allowed access to the Competition Floor without proper display of your **Participant Pass**. Only 26 passes will be allowed mat side. This means only 26 people from your school are allowed on the floor.

LOSS OF PARTICIPANT PASS:

Duplicate **Participant Passes** for wrestlers and/or coaches **WILL NOT** be issued in the event they are lost or stolen. You and/or your wrestler(s) may gain access to the U. S. Cellular Coliseum with a paid ticket for admission.

MEDICAL ARRANGEMENTS:

(1) There will be trainers available during all sessions. Coaches should contact trainers on duty to discuss any potential problems or medical emergencies. (2) Should you desire to bring your own team physician or trainer, school(s) may notify Sam Knox at the IHSA Office and request one (1) Licensed Athletic Trainer/Medical Practitioner Pass. This pass will allow that person to be on your team bench and will not count as one of the allotted 26 Participant Passes.

PRESS AREA:

Seating is assigned to working press and official tournament personnel only. Please inform your wrestlers and members of your official party that the press area is designed to accommodate members of the working press and official tournament personnel only, and not wrestlers or coaches.

VIDEO TAPE EQUIPMENT:

Self-contained videotape equipment is permissible, but equipment will not be allowed to be positioned in such a fashion as to prevent spectators and/or other competitors and coaches from viewing the competition. Areas not previously assigned may also be used by school personnel. Power will not be available, please make arrangements to provide necessary battery packs. Under no circumstances shall a non-news media (meaning spectator and/or school) videotape crew be permitted access on the competition floor videotaping competition during any session of the tournament. Approved non-news media videotape crews for each team will be given priority.

CORRECTIONS IN PROGRAM INFORMATION:

Please make sure corrections concerning wrestlers from your school (name spelling, year in school, season record, etc.) are given to the scorers at the mats when they first wrestle, and for every bout thereafter, so that corrections may be made on the score charts posted from your school and will be duplicated correctly.

CORRECTIONS IN TOURNAMENT RECORDS, DATA:

Please check the tournament records and other data included in the official program to make sure that we have proper information involving your school and/or wrestlers from your school who hold tournament records. If you find a mistake, please inform the tournament manager as soon as possible.

AWARD PRESENTATIONS:

Will be on Saturday night immediately following the final match. Each coach will be responsible for keeping his wrestlers in order on the mat immediately after the conclusion of the meet. At the conclusion of the final meet, the medallions and the 4th place trophies will be presented on the mat, followed by the presentation of medallions and the third place trophies to the third place teams, etc. **Again, a reminder that team pictures will be taken immediately after the presentations of medallions and trophy for each team. NOTE: No hats may be worn during the awards presentation.**

BUS PARKING:

All team buses should drop off their teams at the Roosevelt Street Entrance and ask for directions for Bus Parking.

SPORTSMANSHIP:

Spectators attending the IHSA State Team Tournament are expected to conduct themselves in a proper manner, and to practice good sportsmanship. The ticket of admission does not allow spectators access to restricted areas. Spectators who violate regulations and IHSA by-laws concerning crowd behavior, alcoholic beverages, etc., are subject to removal and/or arrest.

RESPONSIBILITY OF THE PRINCIPAL:

The principal of each member school is the official representative of the IHSA (Constitution 1.830) and is responsible for the conduct of official representatives of the school at activities conducted by the IHSA; by-laws 2.030, 3.151, 6.011 and 6.012 shall be strictly enforced.

REMINDER:

Teams qualifying for the Dual Team State Final must present the Dual Team Wrestling Entry Form to the State Final Manager. **The forms must be turned in at weigh-in on February 25, 2017.**

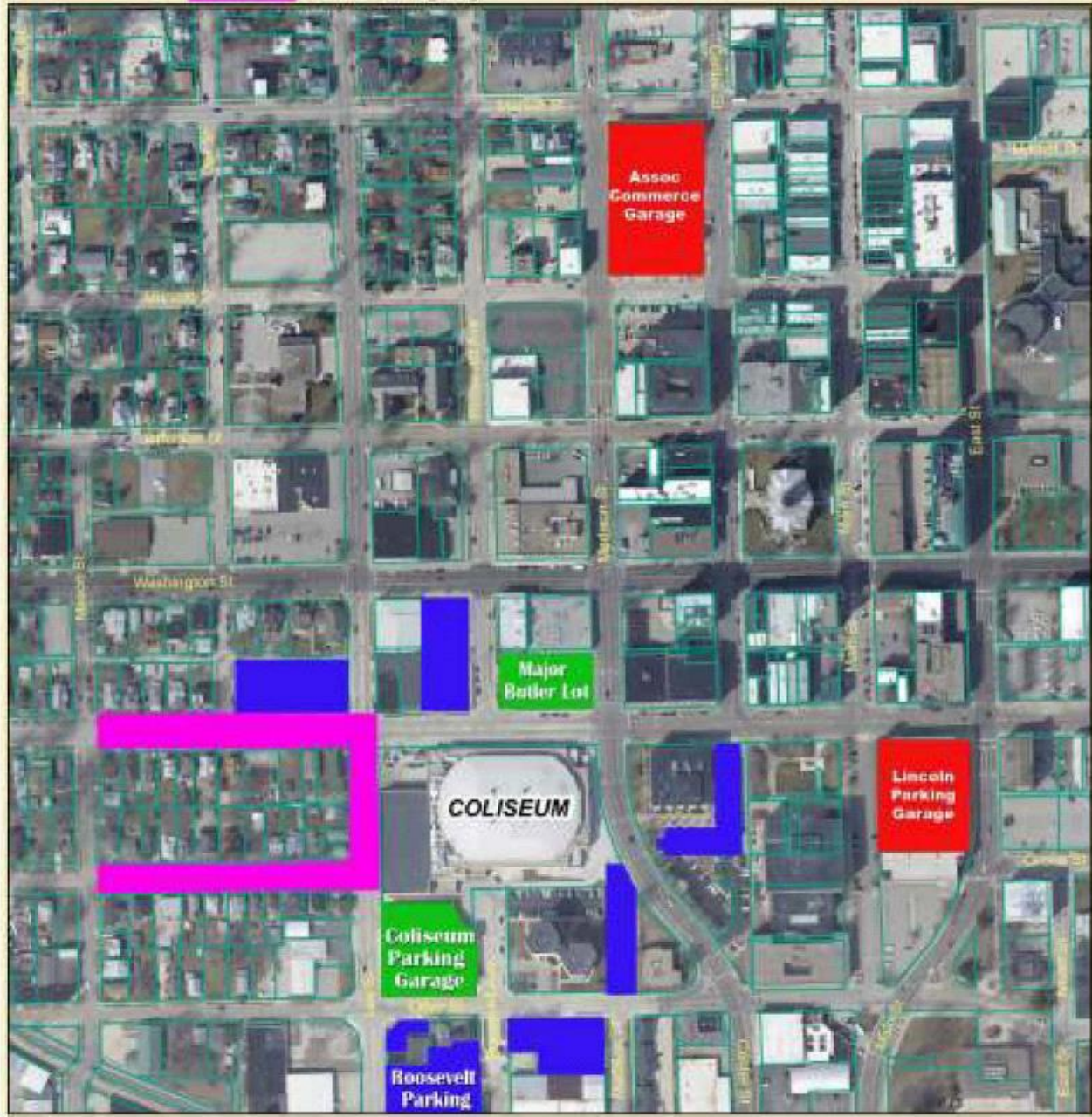


Downtown Parking

0 150 300 Feet

LEGEND

- City Managed Lots or Decks
- Privately Managed Parking
- Free Parking
- Permit Parking Only



On Friday, all of the regular City of Bloomington's fees and hourly restrictions apply to parking garages and street parking until 5:30pm. The Lincoln parking garage charges \$1.00/hour and the Assoc Commerce Garage allows free parking on the first level for up to 4 hours. On Saturday, all lots will allow free parking. Please make note of all signage surrounding these areas.

Privately owned parking lots surrounding the Bloomington Coliseum are not preferred parking places, and may charge a premium admission fee or tow your vehicle if improperly parked.