



2019-20

Competitive Cheerleading
State Final Qualifier Information





COMPETITIVE CHEERLEADING STATE QUALIFIER INFORMATION

TABLE OF CONTENTS

I.	Welcome	Page 2
II.	Qualifying School Information	
	A. Venue	Page 3
	B. Contacts	Page 3
	C. Press Contact.....	Page 3
	D. Housing.....	Page 3
	E. Tickets	Page 4
	F. Competition Order	Page 4
	G. Team Packet Pick-Up	Page 4
	H. Credentials	Page 4
	I. Athletic Trainer	Page 4
	J. Media	Page 4
	K. Parking	Page 5
	L. Access.....	Page 5
	M. Seating	Page 5
	N. Competition Areas – Warm Up & Photos	Page 5
	O. Competition Floor – Intro & Awards.....	Page 6
	P. Guest Services.....	Page 6
	Q. Lost and Found	Page 6
	R. Sportsmanship.....	Page 6
	S. Event Safety	Page 7-8
	T. Checklist and Contacts	Page 8
III.	Maps	
	A. Outside Entrance Map	Page 9
	B. Parking Map.....	Page 10
	C. Bus Parking Map	Page 11
	D. Arena Map	Page 12
	E. Event Flow Map.....	Page 13
IV.	State Final Pass Gate	Page 14
V.	State Final Student Media Information	Page 15
VI.	Request for Certified Athletic Trainer	Page 16
VII.	State Final Time Schedule	Page 17
VIII.	Hotel Information	Page 18



Dear Competing Teams,

On behalf of the Illinois High School Association Board of Directors, the Competitive Cheerleading Advisory Committee, and our member schools, it is my pleasure to congratulate you on qualifying for the 2020 IHSA Competitive Cheerleading State Finals! No other state in the country conducts interscholastic competition for schools like we do here in Illinois and we are thrilled that you are able to be a part of the opportunity.

We extend a special welcome and congratulations to all the participants of this year's State Final. You should be commended for your efforts, hard work and dedication which enabled you and your school to achieve success. I also want to welcome and congratulate the coaches of all our competing schools who have trained and prepared student athletes to reach this level of performance.

The IHSA believes that interscholastic competition enriches the educational experience. Here students and coaches have a chance to demonstrate the fruits of their hard work and commitment. Regardless of the outcome of events, we ask that you do your very best. As a participant you proudly represent your families, schools and communities in a very visible forum. The sense of community pride shown in the performances is a tangible display of appreciation for excellence demonstrated by our member schools. Thank you in advance for exhibiting top qualities of sportsmanship and embracing all that can be learned through education based athletics. You have spent many long hours preparing for this championship and we wish you the very best and hope you enjoy every aspect of the State Final.

We want you to know that we appreciate all the work that you have put forth to be at the State Finals and it is our hope that you are able to thoroughly enjoy the tournament from start to finish. You will see located in this packet all the information necessary to make your trip to State as smooth as possible.

We wish you the very best and trust you will enjoy your time at the IHSA State Final. Feel free to call our office if you have any questions and thank you for your support of IHSA and for being a part of the IHSA State Final experience and remember, The Future Plays Here!

A handwritten signature in black ink that reads "Susan M. Knoblauch". The signature is written in a cursive, flowing style.

Susan M. Knoblauch
Assistant Executive Director
Illinois High School Association



2020 IHSA COMPETITIVE CHEERLEADING STATE FINAL

QUALIFYING SCHOOL INFORMATION

The Illinois High School Association (IHSA) serves member schools by providing leadership for equitable participation in interscholastic activities that enrich the educational experience. School administrators, coaches, officials, fans, Grossinger Motors Arena (formerly known as the U.S. Cellular Coliseum) and the IHSA share a very important responsibility to student athletes that are participating in the state final competition at the Grossinger Motors Arena to provide equipment, facilities and an environment that is as free of risk as possible. **To have the best experience possible, material in this document will assist in preparing participants and fans for a trip to the Cheer State Final at Grossinger Motors Arena. Please share pertinent information with participants, parents and fans.** The concern for the health and safety of student athletes participating in the state tournament is primary. Security and IHSA personnel at the arena will monitor all fans and participants for their safety and security and react quickly and reasonably when the need arises.

COMPETITION DATES AND TIMES

<http://www.ihsa.org/SportsActivities/CompetitiveCheerleading.aspx>

VENUE

Grossinger Motors Arena
101 S Madison St, Bloomington, IL 61701 309-434-2843

CONTACTS

- **Cassie Peterson**, Grossinger Motors Arena Event Manager
Venue inquiries: (309) 434-2919 cpeterson@grossingermotorsarena.com
- **Director of Ticketing:** Nikki Dalbey, Grossinger Motors Arena Box Office - For ticketing inquiries, please call (309) 434-2679
- **Emergency Calls:** Grossinger Motors Arena - (309) 434-2843
- **Bloomington Normal Area Convention and Visitor's Bureau:** Matt Hawkins (800) 433-8226 matt@visitbn.org
<http://www.visitbn.org/>
- **Press Credentials/Information:** Matt Troha, IHSA Assistant Executive Director, (309) 663-6377 mtroha@ihsa.org
- **Team Credentials:** Carol Carr, IHSA Administrative Assistant, 309-663-6377 ccarr@ihsa.org

HOTEL INFORMATION

Team Housing: The link below includes a list of hotels blocked for teams participating in the IHSA Competitive Cheer State Finals. A school representative must call to confirm housing by **12:01 p.m. on February 4, 2020** by identifying themselves as an IHSA state qualifying cheer team. Rooms will be released to the public following the deadline. Schools are responsible for all housing expenses. Schools are not required to use this housing.

<https://www.ihsa.org/documents/chc/2019-20/2020%20IHSA%20Cheer%20housing.pdf>

Fan Housing: Fans can contact the Bloomington Normal Area Visitors Bureau for hotels - Matt Hawkins (800) 433-8226 matt@visitbn.org
<http://www.visitbn.org/>

TICKETS

Ticket Information: Tickets are currently available for \$10 per session (child in arms requires no ticket). Tickets can be purchased at the door and in advance through the Grossinger Motors Arena Box Office. Tickets for each session go on sale at the Box Office 1 hour before the start of the session. Fans will not be permitted to enter the arena until 1 hour prior to the start of each session. Re-entry to Grossinger Motors Arena will be allowed during each session. **Fan will be asked to clear the arena between sessions.**

Preliminary Rounds

Session 1 – Friday, February 7 - 9:00 a.m. – 2:15 p.m. (Doors open at 8:00 a.m.) (Small & Medium Teams)

To purchase tickets, click here:

<https://www1.ticketmaster.com/event/0700577AE6CE8110>

Session 2 – Friday, February 7 - 3:30 p.m. – 9:00 p.m. (Doors open at 2:30 p.m.) (Large & Coed Teams) To purchase tickets, click here: <https://www1.ticketmaster.com/event/0700577AE6CB8109>

Final Rounds

Session 3 – Saturday, February 8 - 11:00 a.m. – 6:00 p.m. (Doors open at 10:00 a.m.) (Small/Medium 11:00 a.m. – 2:00 p.m. Large/Coed 3:00 p.m. – 6:00 p.m.) To purchase tickets, click here:

<https://www1.ticketmaster.com/event/0700577AE6D58129>

- Limited luxury suites will also be available for purchase at the State Final by contacting Matt Moran at 309-434-2691
- Service fees may apply for internet and phone orders
- No discount tickets will be given.
- Grossinger Motors Arena does not accept checks

COMPETITION ORDER

Competition Information: State Final information will be updated at

<http://www.ihsa.org/SportsActivities/CompetitiveCheerleading/StateSeriesInformationResults.aspx>

PACKET PICK-UP

Coaches/School Administrators can pick up team packets at the VIP entrance of Grossinger Motors Arena from 6:30 p.m. to 8:30 p.m. on Thursday, Feb. 6, 2020 or in the lobby of the Pepsi Ice Rink after 7:00 a.m. on Friday, Feb. 7, 2020. Team packets include state final pins, state final programs and pertinent state final information.

CREDENTIALS

Qualifying Schools: Only 4 coaches and 16 small/20 medium/24 large and coed participants will be credentialed. All others must buy a ticket and sit in the arena. Only credentialed participants are allowed in the warm up and staging areas. **Credentials allow participants access to the venue the entire weekend (entry at the VIP entrance).**

ATHLETIC TRAINER

Trainers: Ambulance service/medical staff will be available during the State Final. Trainers will be on duty during the tournament and will attend to participating competitors for onsite injuries provided a coach is present while the student is being assessed/treated. **A school is responsible for furnishing its own training supplies and for attending to its own students for preexisting and preventative injuries such as taping.** If a team's athletic trainer is to be with the team, in the warm up area or competition areas, the team athletic trainer must be issued and wearing a credentialed pass.

Athletic Trainer Pass: If a school is bringing a school certified athletic trainer, the principal/athletic director may request (on the pass gate list) credentials for one trainer. Athletic trainer passes will be in the team registration packets. Questions regarding the use of a school athletic trainer can be made at the IHSA registration area in the Pepsi Ice Center.

MEDIA

Media Passes for School Newspaper/Yearbook/Photographer:

Each school participating in the state tournament may be represented by a photographer/videographer and reporter for the school newspaper and/or the school yearbook. Three press/photo passes will be issued to a school. These press/photo passes are not to be issued to anyone but students/school personnel working for the school newspaper and/or yearbook. The school principal/athletic director must make the request for the passes by e-mailing Matt Troha (mtroha@ihs.org). They must provide the names of the individuals attending, whether they are students or adults, and if the attending individuals will serve as reporters, photographer, videographers, etc. The student(s) must present a school ID to be issued credentials at the IHSA registration area in the lobby of the Pepsi Ice Center.

PARKING

Team Bus/Van: Team vehicles will **unload at the South Circle Drive of Grossinger Motors Arena** –on Roosevelt Street. After unloading, team vehicles must proceed to the designated parking area on the corner of Wood and Madison streets. If coaches are driving the team, then plan accordingly to allow plenty of time for parking to return to register and attend the coaches meeting. A shuttle will be available for drivers. Tournament personnel will be at the team bus/van unloading area to answer questions and provide directions.

Fan Bus: Fan buses will unload on Front Street in the designated loading and drop off zone. This area is located at the corner of Madison and Front streets and is next to the main entrances. It will be important that fan buses unload quickly and proceed immediately to the designated bus parking area on the corner of Wood and Madison streets. A tournament management representative will be at the fan bus unloading area to give additional instructions for the fan bus parking. **Fan buses can coordinate ticket purchases and an expedited entrance at the blue ramp on Front Street.** Signage and staff will be curbside to direct fan busses. **Contact Nikki Dalbey, Director of Ticketing for Grossinger Motors Arena at (309) 434-2679 to coordinate school fan bus arrival and ticket needs.**

Fan Parking: There are over 3,000 public parking spaces available surrounding the Grossinger Motors Arena in downtown Bloomington. There are three public parking garages and several other parking locations within walking distance. A downtown parking map is located here: <https://www.ihsa.org/documents/chc/2017-18/BN2017-Parking.pdf>

Accessible Parking/Drop Off: Accessible parking is available at Grossinger Motors Arena. The parking deck located on the south side of the arena has limited accessible parking. Additional accessible spots are available in surrounding parking lots (Butler Lot on the North side of the Grossinger Motors Arena at the corner of Madison and Front streets). Accessible drop off is located at the VIP entrance off Roosevelt Ave.

ACCESS

Participant Access: **Participants are allowed access only in designated areas with credentials.** Tournament volunteers will guide teams through competition areas.

Team and Administrator Access:

Credentials: Passes will be issued to teams at packet pick up/registration. Team packets can be picked on Thursday, February 6 at the VIP entrance 6:30 p.m. – 8:30 p.m. and/or in the lobby of the Pepsi Ice Center on Friday at 7:00 a.m. All participants must be in team uniforms/team warm-ups to be allowed to enter credentialed areas. If a school requested an athletic trainer pass and/or school press passes and administrator passes they will be included in the team packets or available for pick up at the Pepsi Ice Center registration area at 7:00 p.m. on Friday.

SEATING

Teams: During the competition, participants are directed to sit in the third level (club level) area above sections 107-110. This area is accessible through the stairwell off Madison Street. Teams will not be allowed to sit/congregate in the arena concourse. During awards, seating will be available in designated areas on the competition floor for credentialed participants only.

Handicap Seating: Accessible seating areas are in Sections 107, 108/109 and 110 behind the last row of seats.

COMPETITION AREAS

Team Warm-Ups: **Competing schools may only enter the warm-up area (Pepsi Ice Center) at their scheduled warm-up report time.** Mats will be provided by the IHSA in the warm-up areas. Teams may not bring their own mats into this area. The Pepsi Ice Center cannot be used as a general holding area or practice space. There will be no IHSA provided offsite practice space.

Designated Areas: For safety and security, only credentialed participants will be permitted in designated competition areas.

Only participants that are in uniform/warm-ups on the team roster will be allowed on the floor. A maximum of four IHSA certified/approved coaches will be allowed on the “bench.” In addition, one certified athletic trainer will also be allowed in the team areas. Alternates who are in uniform and have also received participant passes are allowed on the “bench”. Credentialed school media and credentialed school administrators are allowed warm-up and floor access. All others must buy a ticket and remain in arena seating.

Team Photos: All teams will be photographed prior to warm-up by Visual Image Photography (VIP) Photography. Pictures can be viewed for order at www.vipis.com.

COMPETITION FLOOR

Team Introductions: When a team is announced, they may position themselves anywhere on the edge of the competition floor. Prior to this time the coach may proceed to the music area. Music check will be available through a headset prior to each school's performance. Following the announcement and recognition of the team, the announcer will then direct the team to take the floor. No organized entrance is allowed. After competing, the team must exit the competition floor immediately to their right. Please enter and exit the competition floor quickly and limit all excessive entrance and exit celebrations.

Awards Ceremony and Photographs: On Friday, following the last performance of the session, the announcement of the top 10 advancing teams will take place.

On Saturday, following the final round of competition, an awards ceremony will take place immediately following the conclusion of each division.

All competing teams in the respective division will be directed to safely take the floor for announcement of awards. Participants can enter the arena floor from the staging area or any aisle. Please do not allow participants to climb over the dasher boards.

On Saturday, teams will be presented awards in the following order: third place, second place and then first place. Competitors receiving medals will be asked to line up in roster order. Medals will be provided for school administration (superintendent, principal, athletic director) and 4 coaches, 1 athletic trainer, and the credentialed participants who are listed on the roster. Fans will not be allowed on the floor for photographs. Schools, parents and fans will have access to professional photos from VIP <https://www.vipis.com/> taken during the tournament. All competing teams are asked to remain on the floor until the conclusion of awards.

GUEST SERVICES

The Guest Services Kiosk is located by the main entrance of the building behind section 108. In addition, there are staff located throughout the building that are more than happy to assist you and your needs.

LOST AND FOUND

Neither tournament management, Grossinger Motors Arena, nor the IHSA will assume responsibility for any losses while on the premises.

During an event, items that are lost or found will be given to the Guest Services kiosk. At the end of the event, unclaimed lost and found items are stored in the main administration office. If you think you may have lost an item at the Grossinger Motors Arena, call at 309-434-2843. We will be able to assist you with any lost and found questions. All items are only stored for a month after they are found. Any unclaimed items are donated to local charities.

SPORTSMANSHIP

IHSA Position on Sportsmanship: A participant, coach, athletic trainer, trainer or other team personnel must not commit unsporting acts. This includes, but is not limited to, acts or conduct such as: disrespectfully addressing the crowds or an official; contacting an official or gesturing in such a manner as to indicate resentment; using profane or inappropriate language, music, or gestures; baiting or taunting during any aspects of competition.

The NFHS and IHSA disapprove of any form of taunting which is intended or designed to embarrass, ridicule or demean others under any circumstance.

The IHSA expects all school teams to uphold themselves to the highest level of sportsmanship always.

EVENT SECURITY & SAFETY INFORMATION

- **Healthy Competitive Cheer Environment**

The IHSA serves member schools by providing leadership for equitable participation in interscholastic activities that enrich the educational experience. School administrators, coaches, officials, fans, Grossinger Motors Arena and the IHSA share a very important responsibility to the student-athletes that are participating in the state final competition at the Arena to provide equipment, facilities and an environment that is as free of risk as possible. The concern for the health of our high school athletes participating in the state tournament is primary. Security and IHSA personnel at the coliseum have been instructed to monitor the participants and react quickly and reasonably when conduct becomes negative and drops below the level of expected behavior.

- *Any act dangerous to others, is an unsafe behavior, incites participants or spectators to violent or abusive action, exhibits obscene gestures, or yells profanity and/or provocative type language toward an official, student-athlete, coach, spectator, bench and/or score table personnel are unacceptable.*

- **IHSA Event Security Policy**

To help insure the safest and most secure atmosphere for this IHSA State Final, event management at the Arena will diligently maintain the above standards. This will require complete cooperation by all competing teams, contest officials and fans. Security will always have priority over convenience; therefore, if you are requested to cooperate with event personnel in any manner, please do so promptly. Your assistance will enable our staff to fulfill its responsibility efficiently.

Persons and Possessions Subject to Search

Please note that all persons and their possessions are subject to search upon entering any IHSA State event venue. Items prohibited under this policy or any item deemed by the IHSA or Grossinger Motors Arena staff to be dangerous or harmful to persons or property will be confiscated. Patrons of any IHSA state series contest who do not cooperate with event staff in their enforcement of this policy will be removed from the premises and law enforcement officials will be called as warranted. No ticket refunds will be granted in such cases.

Prohibited items in the Arena

- Cameras with detachable lenses
- Selfie sticks/telescopic devices
- Computers/laptops
- Outside food or beverage
- Alcohol of any type/Illegal substances
- Cans/bottles/coolers/other similar containers
- Video camera/audio recorders
- Laser pens/laser products
- Noise makers/air horns
- Weapons of any kind including licensed concealed carry weapons/knives/mace/blades/tools
- Backpacks/large bags/duffel bags/sealed packages of any kind
- Fireworks or any incendiary device
- Drones or any other model aircraft
- Animals
- Smoking/vaping
- Large umbrellas with a pointed tip
- Any poster or sign larger than 22" x 28"
- No signs, posters or messages on any garment with explicit language, profanity or derogatory characterization directed toward any person
- Flag poles or any support frames for banners/signs
- Hazardous items (chemicals/paints/fuel)
- Balloons/confetti/glitter/glow sticks
- Any other items deemed unacceptable by Grossinger Motors Arena Management

- **Clear Bag Policy**

At the discretion of Grossinger Motors Arena security personnel, certain items are deemed hazardous or potentially dangerous and are denied access to the facility. Upon entering the venue, guests will be exposed to handheld security wands, electronic magnetometers and bag searches. Guests will be required to remove hats and empty pockets of all items prior to scanning. Each guest will be allowed to carry in one (1) clear plastic, vinyl, or PVC bag that does not exceed 12" x 6" x 12" or one (1), one-gallon clear plastic bag. In addition to a clear plastic bag each guest will be allowed to carry in one (1) small clutch that does not exceed 4.5" x 6.5". Diaper bags (with a child 3 and under) and bags carrying medically necessary items will be allowed after a visual inspection inside the bag is completed by security. Guests who have bags larger than this size will be asked to return them to their vehicle or discard them. **All bags, purses or personal items of any size will be subject to search.** In the event that prohibited items are revealed during a search, the guest will be permitted to return the item to their vehicle or the item will be confiscated prior to guest entrance. Grossinger Motors Arena is unable to store over-sized or prohibited items. Building management has the sole right to determine the type of pre-event screening and what items are prohibited.

- **Alcohol and Illegal Substances Prohibited**

The possession, distribution, sale, and or consumption of alcoholic beverages and illegal substances are prohibited on the property of any IHSA state series contest facility. State series hosts are required to make all state series contest sites, including the parking lots, fan accommodation areas, and other school or event venue property, alcohol and illegal substance free zones on the date or dates of any IHSA event being held at the site. Event personnel will enforce this policy rigorously.

CHECKLIST

IHSA State Final Checklist

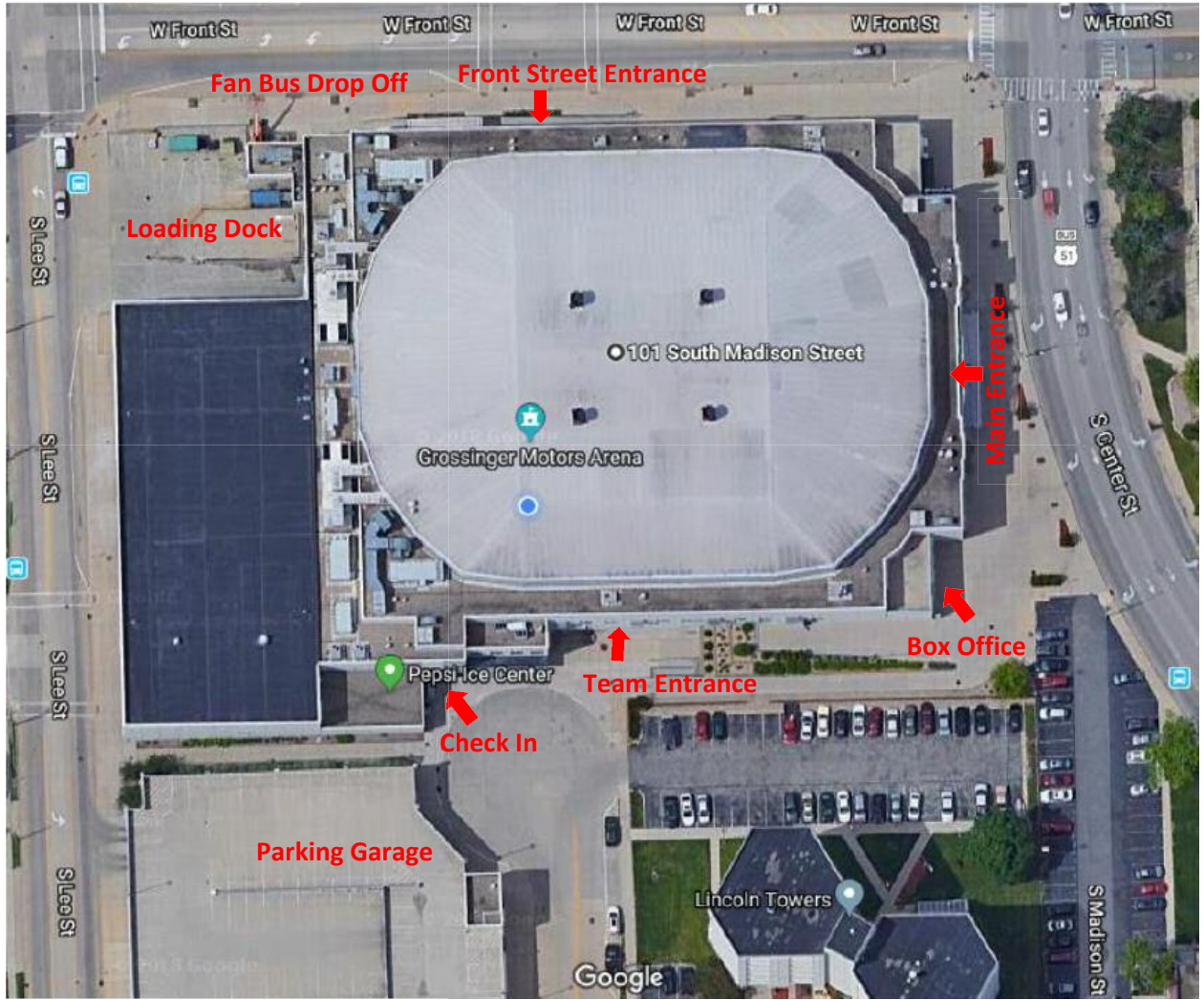
- 1 Confirm your housing by February 4, 2020
<https://www.ihsa.org/documents/chc/2019-20/2020%20IHSA%20Cheer%20housing.pdf>
- 2 Request any student media passes by contacting Matt Troha (mtroha@ihsa.org 309-663-6377) for school yearbook/newspaper passes
- 3 Requests an athletic trainer pass if bringing a school certified athletic trainer (see pass gate list)
- 4 Complete and submit the IHSA Pass Gate List to ccarr@ihsa.org
http://www.ihsa.org/documents/forms/General_Pass_Gate_List.pdf

Questions:

Contact

Susie Knoblauch, IHSA Assistant Executive Director
309-663-6377 sknoblauch@ihsa.org

Carol Carr, IHSA Administrative Assistant
309-663-6377 ccarr@ihsa.org



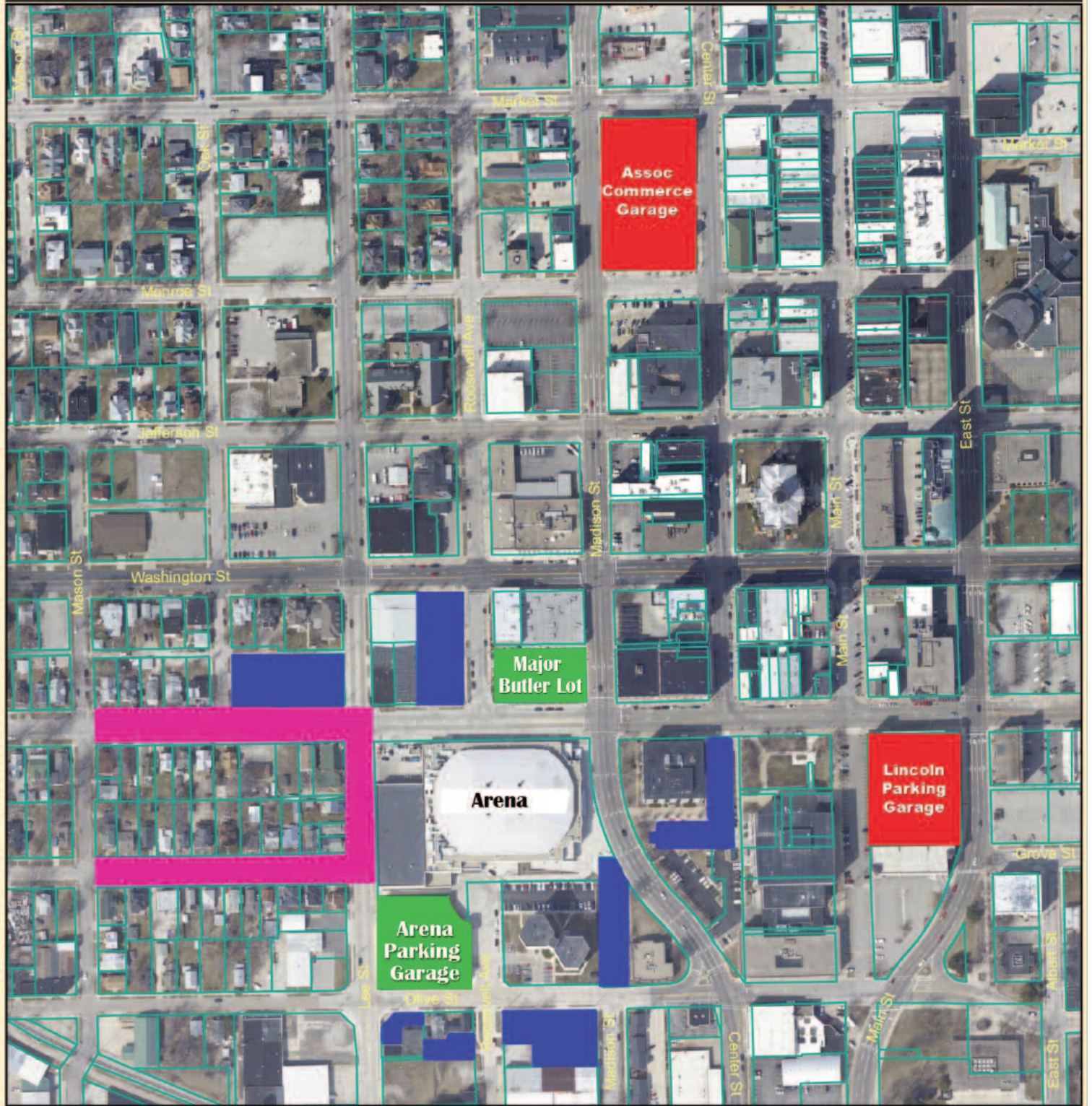


Downtown Parking

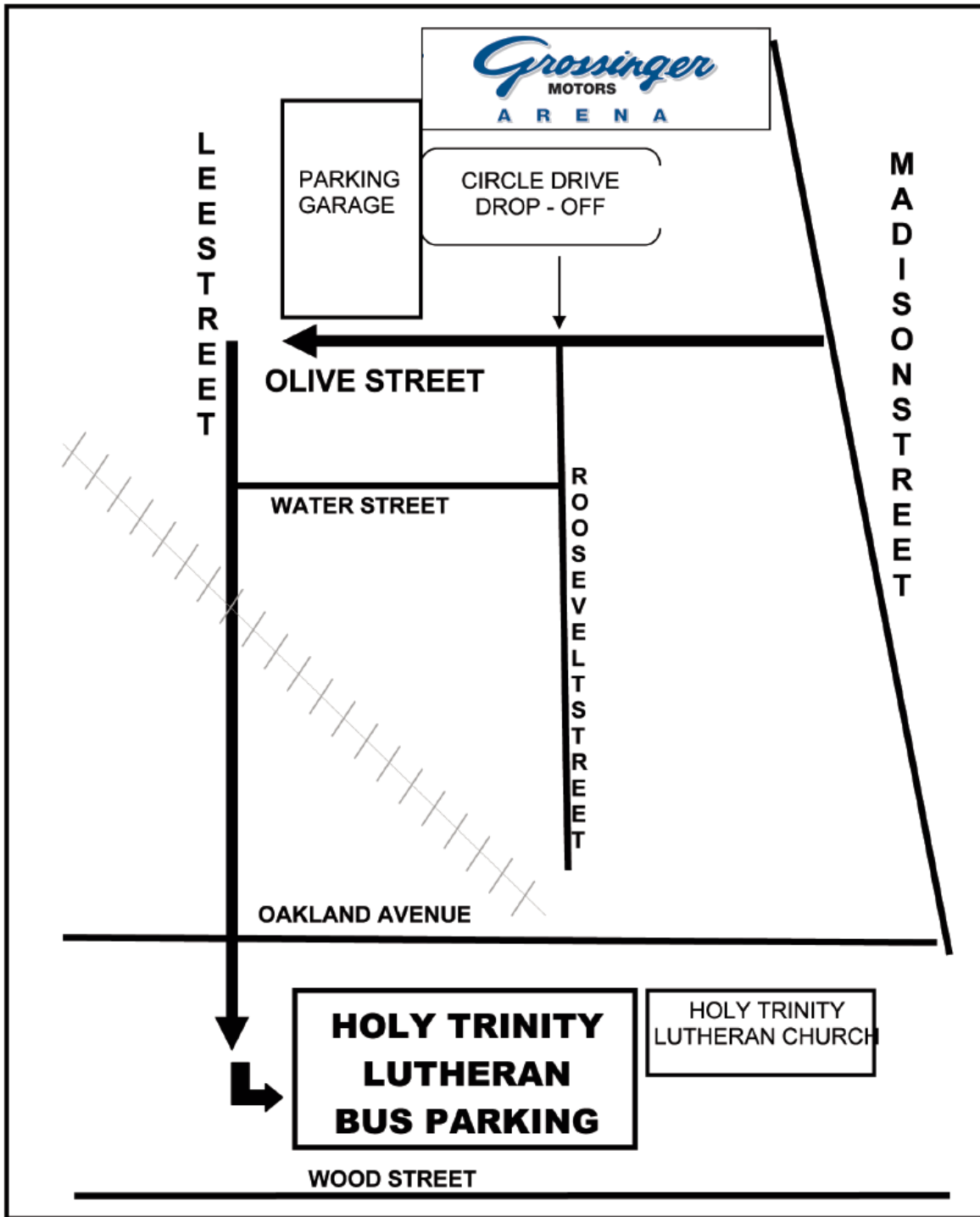
0 150 300 Feet

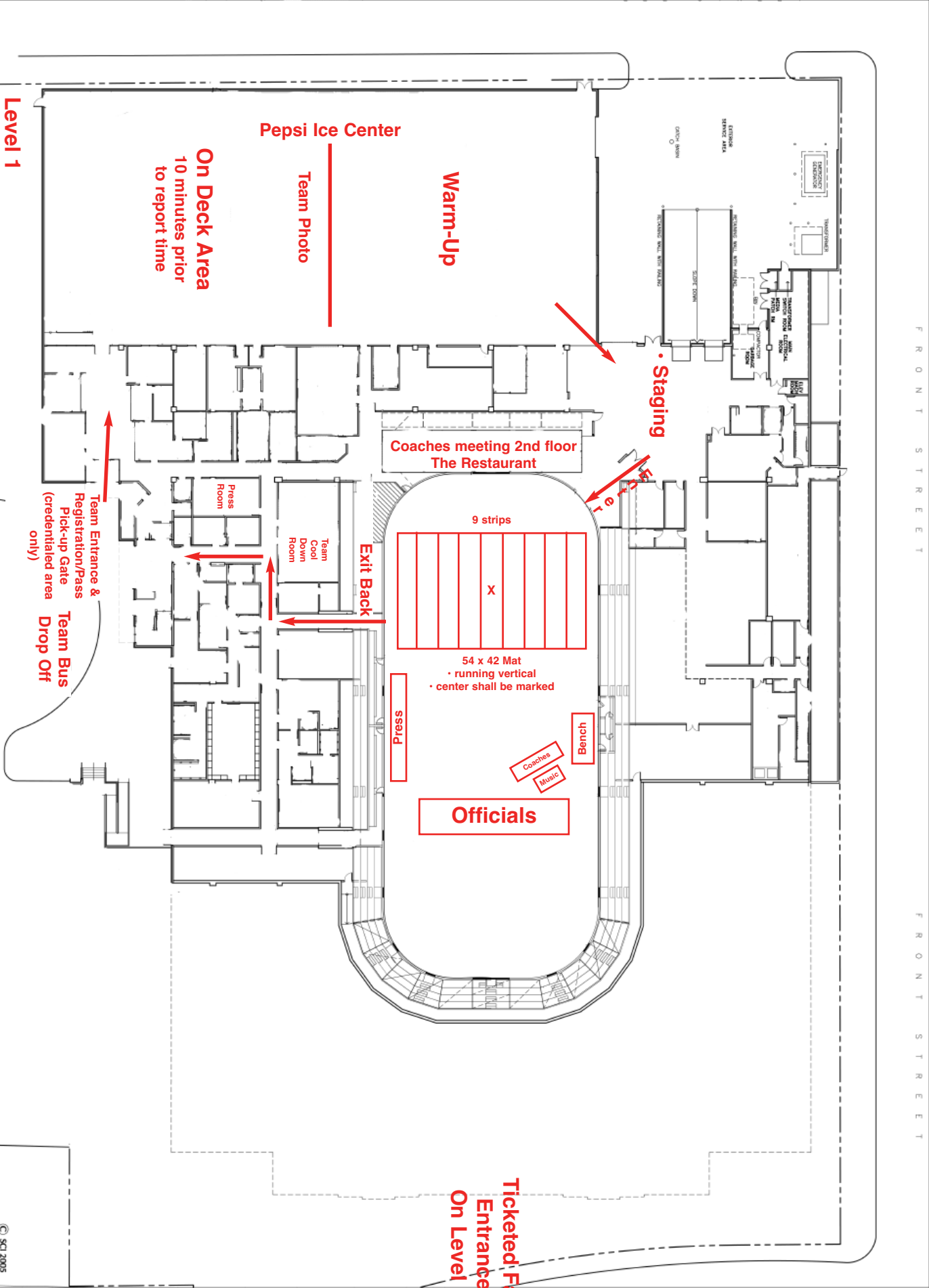
LEGEND

- City Managed Lots or Decks
- Privately Managed Parking
- Event Parking (Fees may apply)
- Permit Parking Only



IHSA BUS PARKING





Level 1

On Deck Area
10 minutes prior
to report time

Pepsi Ice Center

Team Photo

Warm-Up

• Staging

Coaches meeting 2nd floor
The Restaurant

9 strips

X

54 x 42 Mat
• running vertical
• center shall be marked

Officials

Press

Bench

Coaches
Music

Exit Back

Team
Cool
Down
Room

Pass
Room

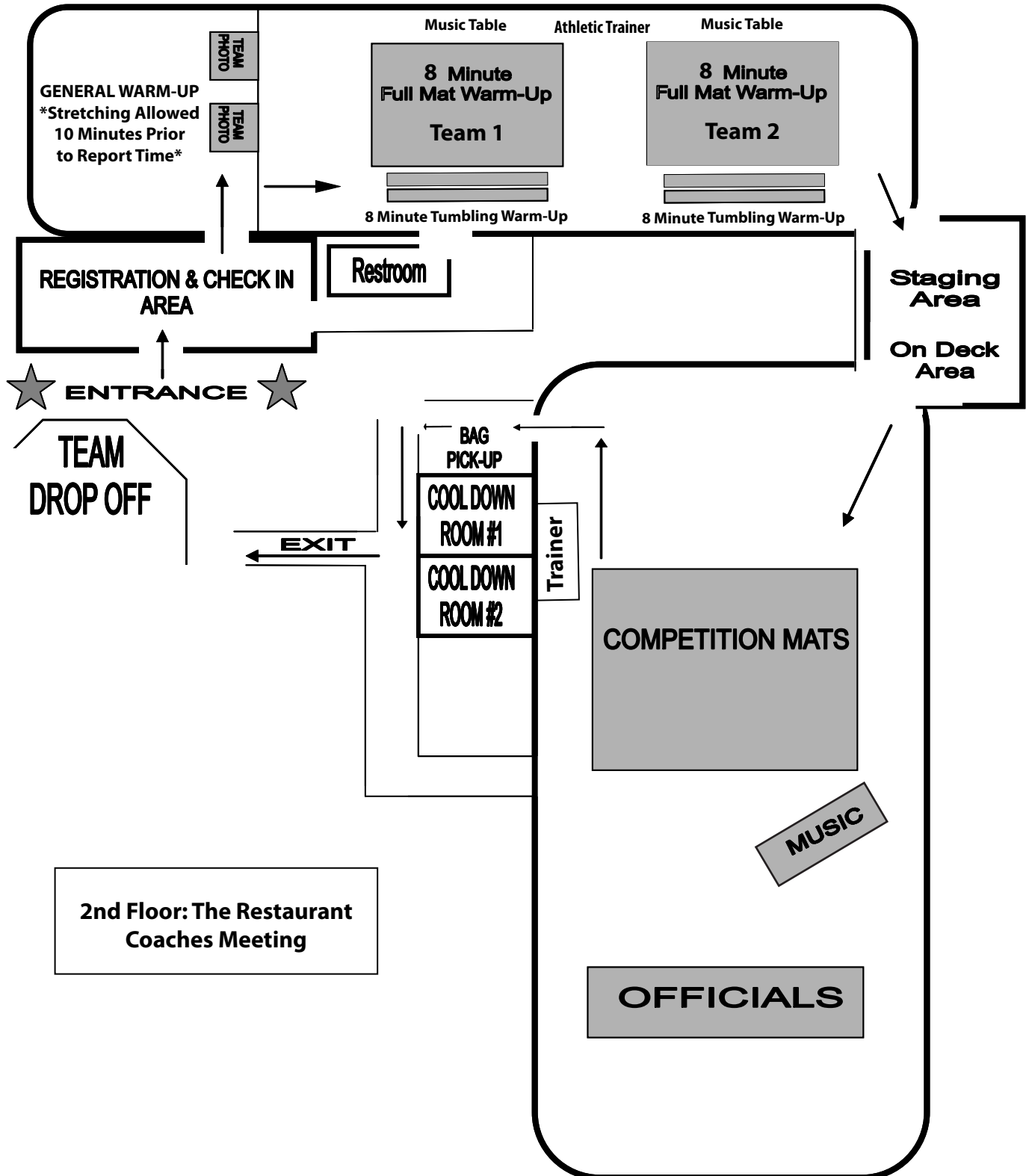
Team Entrance &
Registration/Pass
Pick-up Gate
(credentialed area
only)

Team Bus
Drop Off

Ticketed Fan
Entrance
On Level 2



Competitive Cheerleading



SAMPLE FORM

For typeable and printable form, click on this link:

http://www.ihsa.org/documents/forms/General_Pass_Gate_List.pdf



IHSA Pass Gate List

Illinois High School Association
2715 McGraw Dr., Bloomington, IL 61704
Phone: 309-663-6377
Fax: 309-663-7479

The fields in this form will accept a cursor and can be filled out prior to printing.

The following are the only persons representing a member school to be admitted free to this contest. The top eight (8) categories will be admitted for the entire tournament. Rostered players will only be admitted accompanied by the coach.

Participating schools must complete this form and return it to the tournament manager prior to the start of the event.

Sport/Activity:

Host School:

Level of Contest:

Your School:

The top four (4) are allowed to have one (1) guest. Guests 1-3 must arrive with administrator. Guest 4 may arrive late.

Administration

1.		
2.		
3.		
4. Head Varsity Coach		Guest

The remaining coaches, etc. are allowed entry into the tournament but are not permitted a guest.

5. Assistant Coach	
6. Assistant Coach	
7. Assistant Coach	
8. Assistant Coach	
9. Manager	
10. Scorekeeper	
11. Video/Camera Operator	
12. Bus Driver	
13. Athletic Trainer	
14. All rostered players according to the terms and conditions.	

All other representatives from your school must pay to attend an IHSA tournament.

In case of emergency or need to communicate changes to your school:

Contact Person:

Contact Person:

STUDENT MEDIA CREDENTIALS FOR PARTICIPATING SCHOOLS

Congratulations on qualifying for an IHSA state final in a team sport. In order to provide the best possible coverage of this event for your school newspaper, yearbook and AV club, etc. you are entitled to have up to three students receive credentials to cover this event as official media members. In the event that you have less than three students, an adult sponsor may be included on this list. To apply for student media credentials, please have your Athletic Director or an individual involved with the aforementioned programs email Matt Troha (mtroha@ihsa.org) at the IHSA with the following information:

- 1) The names of individuals attending
- 2) Whether they are students or adults
- 3) If the attending individuals will serve as reporters, photographers, videographers, etc.

Student media who are registering for credentials are expected to maintain a level of professionalism while covering this event. That includes no cheering while in the press box or game coverage area. Proper attire is also required. Wearing school shirts and colors is acceptable, but students wearing face paint, costumes, carrying props, etc. will be required to change before receiving credential clearance.

The individual applying for student media credentials will receive specific information on credential pick-up and media regulations at the event via email in the days leading up to the state final.

Please note that student media credentials are only available for state final events in team sports. Due to the sheer volume of schools who qualify in individual sports, our press facilities would be unable to accommodate student media from all participating schools in individual sports. Student media are also welcome to cover IHSA state final activities. Credentials are not required for these events, but please have your students check-in with state final personnel upon arrival for media coverage regulations.

Please contact Matt Troha (309-663-6377) at the IHSA for any questions related to this document.



Phone: 309.663.6377

Fax: 309.663.7479

Request for School Certified Athletic Trainer

To: Susie Knoblauch, Assistant Executive Director

From: _____ High School

Date: _____, 2020

Our high school team has qualified for the 2020 Competitive Cheerleading State Finals held at the U.S. Cellular Coliseum in Bloomington. Our school is sending 1 certified athletic trainer to cover the medical needs of our team.

Please make available an athletic training pass for the state finals

Name _____

Press/Athletic Training credentials may be picked up in the lobby of the Pepsi Ice Rink with the team packets on Friday or Saturday.

Principals/Athletic Directors signature:

This form should be faxed to the IHSA by February 5, 2020 to 309-663-7479.

Passes can be picked up in the lobby of the Pepsi Ice Center with the team packets.

PLAY SMART. PLAY HARD.®

IHSA Cheerleading Information



• www.ihsa.org • Phone: 309-663-6377 • Fax: 309-663-7479 •

2020 IHSA Competitive Cheerleading - State Final Time Schedule

Grossinger Motors Arena - 101 S Madison St, Bloomington, IL 61701

Admission: \$10 per session

Friday, February 7, 2020

SESSION 1

Small and Medium Team Preliminaries

8:00 a.m. - Coaches Meeting (*Club Level Restaurant*)

8:00 a.m. - Doors of the arena open to public

8:55 a.m. - Welcome & National Anthem

9:00 a.m. - First Performance

(Small and Medium team performances alternate)

1:10 p.m. - Last Performance

1:15 p.m. - Announcement of Small Division Finalists*

1:30 p.m. - Announcement of Medium Division Finalists*

(Coaches meeting for advancing teams in the video playback room immediately following the announcement of finalists)

SESSION 2

Large and Coed Team Preliminaries

2:15 p.m. - Coaches Meeting (*Club Level Restaurant*)

2:30 p.m. - Doors of the arena open to public

3:25 p.m. - Welcome & National Anthem

3:30 p.m. - First Performance

(Large and Coed team performances alternate)

7:40 p.m. - Last Performance

ISU - Game Day

7:45 p.m. - Announcement of Large Division Finalists*

8:00 p.m. - Announcement of Coed Division Finalists*

(Coaches meeting for advancing teams in the video playback room immediately following the announcement of finalists)

Saturday, February 8, 2020

SESSION 3

Finals in all Four Divisions

10:00 a.m. - Doors of the arena open to public

10:55 a.m. - Welcome & National Anthem

11:00 a.m. - Small and Medium Team Finals

(Small and Medium team performances alternate)

12:45 p.m. - Small Team Awards

1:15 p.m. - Medium Team Awards

2:30 p.m. - IESA Champions

2:45 p.m. - ParaCheer Midwest

2:55 p.m. - Welcome & National Anthem

3:00 p.m. - Large and Coed Team Finals

(Large and Coed team performances alternate)

4:45 p.m. - Large Team Awards*

5:15 p.m. - Coed Team Awards*

***Team packet pick up is available by the music table after each division.**



2020 IHSA Competitive Cheerleading Housing

State qualifying teams have until 12:01 p.m. on Tuesday, February 4, 2020 to book rooms at the listed hotels for the reduced rates. After the February 4 deadline, rooms will be released to the general public. Details of the listed hotels can be found at www.visitbn.org under the visitors, lodging links.

Hotel	Phone Number	Rate
Best Western Plus	309-808-0628	\$95
The Chateau	309-662-2020	\$90
Comfort Suites-East	309-452-8588	\$109
Country Inn & Suites-Airport	309-662-3100	\$79
Country Inn & Suites-West	309-828-7177	\$129
Courtyard by Marriott	309-862-1166	\$139
Doubletree	309-664-6446	\$112
Eastland Suites	309-662-0000	\$99-\$169
Hampton Inn & Suites	309-452-8900	\$129
Hawthorn Suites	309-829-8111	\$99
Holiday Inn & Suites	309-662-4700	\$127-\$139
Holiday Inn Express-West	309-820-9990	\$94
Holiday Inn Express & Suites	309-862-1600	\$129
Hyatt Place	309-454-9288	\$144
Marriott	309-862-9000	\$137
Parke Regency	309-662-4300	\$119
Radisson	309-862-0101	\$129-\$139
Ramada Limited & Suites	309-828-0900	\$74-\$84