



The IHSAA governs the equitable participation in interscholastic athletics and activities that enrich the educational experience.

February 21, 2018

State Qualifying Dual Teams:

Congratulations on qualifying for the 2018 Dual Team Wrestling State Finals this Saturday at the Grossinger Motors Arena in Bloomington. We are looking forward to a great tournament on Saturday and wish you and your team the best of luck.

We do have a few things for you at this time. There is an attachment included that reviews the state final completely and provides a list of hotels that are holding rooms for the qualifying teams. It is up to you to contact one of the hotels and make your own arrangements today for this weekend.

Your coach will get a team packet on Friday (if they come to practice at the Arena) or Saturday at weigh-ins. The packet will contain the passes for the competing wrestlers and coaches (26) for the tournament. **ONLY 26 school representatives** will be allowed on the floor for the dual meet competition. They will also have 3 Official passes for the administration and three parking passes for the Roosevelt garage. **Please make arrangements for the coach to get the administrator passes and parking passes to your administration on Saturday.** Cheerleaders in uniform and the coach will be allowed access to the Arena without passes. **NO cheerleaders will be allowed on the floor, they will be required to cheer from the stands.**

If you have a trainer coming with the team we have one extra medical pass for that trainer. The Athletic Director will need to contact our office with the name of the trainer so that his/her pass can be put in the school packet. The trainer is not one of the 26 people mat side for the tournament.

If your school wins the first match, you will be part of the awards ceremony at the conclusion of the final round on Saturday. Remind your head coach that we have 26 slots for medallions for the team, which will include wrestlers and coaches and 4 slots that are for the trainer, athletic director, principal and superintendent. These will be the only people that will be allowed on the floor for the presentation of the medallions. Thanks for helping us with this in advance.

Please be sure to bring State Final Entry Form, page 37 of the Wrestling School Manual. This is to be turned in during the weigh-in on Saturday.

Again, if you have any questions my cell phone number is 217-430-8057.

Sincerely,

Sam Knox  
Assistant Executive Director

# Bloomington Hotels

## Dual Team Wrestling 2018

<b>Hotel</b>	<b>Telephone #</b>	<b>Price</b>
Holiday Inn & Suites	309-662-4700	\$109
Holiday Inn Express & Suites	309-862-1600	\$89
The Chateau	309-665-5671	\$90
Eastland Suites	309-662-0000	\$92
Country Inn & Suites	309-828-7177	\$89
Holiday Inn Express West	309-820-1926	\$99

**IHSA Dual Team Tournament Procedures**  
**Bloomington Coliseum**  
**Bloomington, Illinois**

Congratulations to your wrestling team for qualifying for the 2018 IHSA Dual Team Wrestling State Finals at Grossinger Motors Arena in Bloomington.

**Friday, February 23, 2018**

Mats are open for practice from 5:30 p.m.-7:30 p.m. at Grossinger Motors Arena.  
Doors will open at 5:30 p.m.

Teams may pick up their packets, passes, and State Finals programs when they arrive for practice. If teams do not practice at Grossinger Motors Arena on Friday night, they will pick up their packets, passes, and programs on Saturday morning.

**Saturday, February 24, 2018**

**Session One:**

6:00 a.m. Doors open for teams  
7:00 a.m. Weigh-in for all teams  
7:45 a.m. Coaches Meeting  
8:00 a.m. Doors open to the public  
9:00 a.m. Quarterfinals (6 mats) Upper Bracket matches in Class 1A, 2A, 3A  
11:00 a.m. Quarterfinals (6 mats) Lower Bracket matches in Class 1A, 2A, 3A  
1:30 p.m. Semifinals (6 mats) Class 1A, 2A, 3A

**Saturday, February 24, 2018**

**Session Two:**

5:00 p.m. -- Doors open for teams and the public  
6:00 p.m. -- Class 1A, 2A, 3A 3<sup>rd</sup> Place Duals  
6:00 p.m. -- Class 1A, 2A, 3A Championship Duals

**PASSES:**

All schools in the tournament will receive 26 Participant Passes. This includes a maximum of 21 wrestlers and up to 5 coaches. All coaches and wrestlers who have a Participant Pass must enter through the pass gate entrance on the south side of Grossinger Motors Arena. Schools also receive 3 Administrator Passes and 3 parking passes for the Roosevelt Street Garage to be used by school administrators.

**LOCKER ROOMS:**

Locker rooms will open at 6:00 a.m. and are available for wrestlers to change and shower. Locker rooms are not assigned, so we highly encourage wrestlers to protect their belongings and not leave any valuables in the locker room during warm-up, competition, press conferences, or award presentations. All bags must be taken into the arena and placed next to the team bench. Teams must provide their own towels for showers.

**FOOD/COOLERS:**

Teams may bring food and drinks into Grossinger Motors Arena at weigh-ins. After weigh-ins, wrestlers must eat in the South Club Lounge Area. When wrestlers are finished eating, teams must put their coolers on their bus for the rest of the day.

**TICKETS:**

Tickets go on sale at Grossinger Motors Arena on Saturday, February 24. Doors open to the public one hour before each session.

Session 1 (Quarterfinal/Semifinal) \$7.00  
Session 2 (3<sup>rd</sup> place/Championship) \$7.00

Fans will be able to exit during the sessions and re-enter with a hand stamp.

### **ACCESS TO COMPETITION FLOOR:**

All wrestlers and coaches must display their Participant Passes to gain access to the competition floor at times when their team is competing. Each school may have a maximum of 26 people (21 wrestlers and 5 coaches) at their bench area while their team is competing. When a team is not competing, wrestlers and coaches must sit in the spectator seating area.

### **LOSS OF PARTICIPANT PASS:**

If wrestlers and/or coaches misplace their Participant Passes, additional passes will not be issued. If a wrestler or coach misplaces a pass, he/she will need to purchase a ticket to enter Grossinger Motors Arena.

### **APPROPRIATE DRESS FOR COACHES IS REQUIRED:**

Coaches are not allowed to wear hats, shorts, or t-shirts on the competition floor.

### **TRAINERS:**

IHSA trainers will be on site for all duals. Coaches should contact the State Finals trainers to discuss taping needs or medical emergencies. Schools that wish to bring their own physician or trainer must contact Sam Knox (sknox@ihsa.org) to request one Licensed Athletic Trainer/Medical Practitioner Pass. This pass will allow that person to be on your team bench and will not count as one of the allotted 26 Participant Passes.

### **VIDEO EQUIPMENT:**

Schools may video their duals. Equipment must be positioned so it does not prevent spectators and/or other competitors and coaches from viewing the competition. Electric power will not be available. Please be sure your video equipment is fully charged. Video crews that are not connected to the media or directly connected to a school will not be allowed to video the duals from the competition floor.

### **MEDIA AREA:**

Seating is assigned to working press and official tournament personnel only. Please inform your wrestlers and members of your official party that the press area is designed to accommodate members of the working press and official tournament personnel only - not wrestlers or coaches.

### **SCHOOL MEDIA CREDENTIALS:**

School media passes need to be requested by the principal prior to Thursday, February 22. Contact Matt Troha (mtroha@ihsa.org) to request a school media pass. School media passes must be picked up at the pass gate on the south side of Grossinger Motors Arena.

### **AWARD PRESENTATIONS:**

IHSA board members will present awards to the top four teams in each class on Saturday night immediately following the final duals. Coaches are responsible for keeping their wrestlers in order on the mat immediately after the conclusion of the duals. School administrators (superintendent, principal, and AD) are included in the awards presentation. Team photos will be taken immediately after the awards presentations. Wrestlers must wear their school-issued uniforms or sweatsuits for the team photos. Wrestlers may not wear hats, hoods, or headphones in the team photo.

**BUS PARKING:**

All team buses must drop off their teams at the circle drive on the south side of Grossinger Motors Arena and ask for directions for Bus Parking.

**CORRECTIONS IN PROGRAM:**

If coaches notice errors in the program (spelling, year in school, etc.), please inform tournament management so we can correct those errors in Track Wrestling.

**SPORTSMANSHIP:**

Spectators attending the IHSA State Team Tournament are expected to conduct themselves in a proper manner, and to practice good sportsmanship. The ticket of admission does not allow spectators access to restricted areas. Spectators who violate regulations and IHSA by-laws concerning crowd behavior, alcoholic beverages, etc., are subject to removal and/or arrest.

**RESPONSIBILITY OF THE PRINCIPAL:**

The principal of each member school is the official representative of the IHSA (Constitution 1.830) and is responsible for the conduct of official representatives of the school at activities conducted by the IHSA; by-laws 2.030, 3.151, 6.011 and 6.012 shall be strictly enforced.

**REMINDER:**

Teams qualifying for the Dual Team State Final must present the Dual Team Wrestling Entry Form to the State Final Manager. The forms must be turned in at weigh-ins on February 24, 2018.

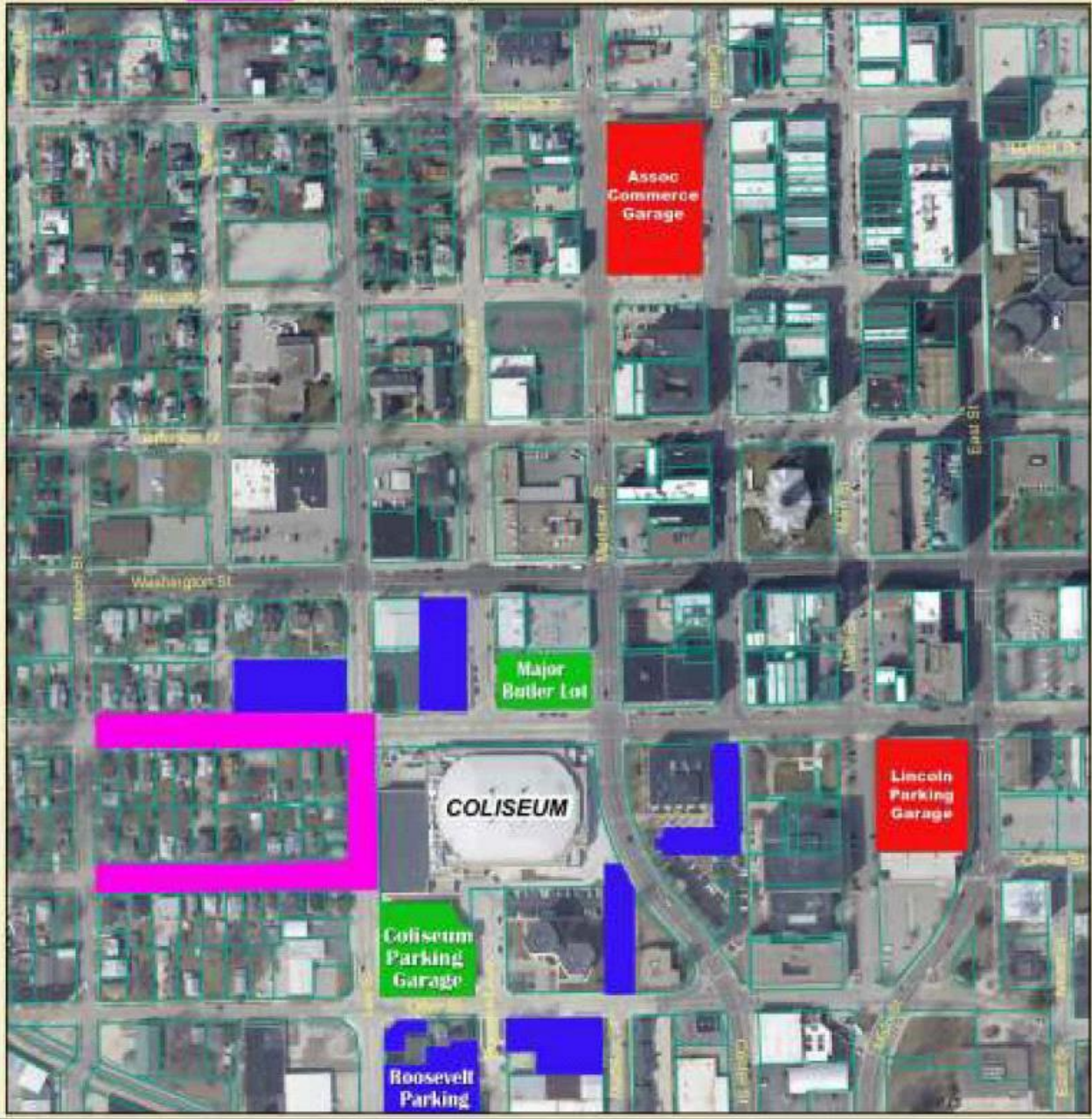


# Downtown Parking

0 150 300 Feet

## LEGEND

- City Managed Lots or Decks
- Privately Managed Parking
- Free Parking
- Permit Parking Only



***On Friday, all of the regular City of Bloomington's fees and hourly restrictions apply to parking garages and street parking until 5:30pm. The Lincoln parking garage charges \$1.00/hour and the Assoc Commerce Garage allows free parking on the first level for up to 4 hours. On Saturday, all lots will allow free parking. Please make note of all signage surrounding these areas.***

***Privately owned parking lots surrounding the Bloomington Coliseum are not preferred parking places, and may charge a premium admission fee or tow your vehicle if improperly parked.***