



## **DRAMA AND GROUP INTERPRETATION QUALIFIERS MANUAL**

**Information for schools qualifying for the  
Drama/Group Interpretation State Final held at**

**Glenwood High School in Chatham, IL  
MARCH 24 & 25, 2023**



## **2023 State Drama / Group Interpretation Qualifiers Information Manual**

Table of Contents	1
Letter of Congratulations	2
Tournament Locations	3
Registration	4
Viewing the Performing Spaces	4
Parking for Buses, Trucks, & Cars	5-7
Drama Performance Schedule	8
Drama Unloading Schedule	9
Drama Unloading Instructions	10
Drama Information	11-12
Drama Theater Instruments	13-14
Drama Theater Set Storage	15
Group Interpretation Performance Schedule	16
Group Interpretation Information	17-18
Group Interpretation Cast Plot Sheet	19
Group Interpretation Floor Plan	20
Group Interpretation Homerooms	20
Country House Food Services	21
Hotel Information	21



Dear Qualifying Schools,

On behalf of the Illinois High School Association Board of Directors, the IHSA staff and the IHSA member schools, it is my pleasure to congratulate you and welcome you to the IHSA state drama/group interpretation competition.

A special welcome and congratulations are extended to all the participants of this year's competition. You should be commended for your hard work, practice and dedication which enable you and your school to achieve this success. I also want to specifically welcome and congratulate the directors of all of the qualifying schools who have trained and prepared the students to reach this level of performance.

The State Tournament Committee providing leadership and expert advice on the administration of the tournament consists of:

Tom Witting, Burbank (Reavis) - *Committee Manager*  
Cheryl Frazier, Richton Park (Southland College Prep Charter)  
Nicole Hendricks, Bensenville (Fenton)  
Ken Carter, Chatham (Glenwood)  
Mike Badger (Richards)  
Tim Schlegel (Sterling)  
Sectional Managers

The members of the state final committee work tirelessly to assure that your experience at the state series is the best possible. Of course, with any competition we do want to remind you of a few things:

1. Be organized and prompt
2. Adhere to all time requirements
3. Show respect to all
4. Adhere to the terms and conditions of the contest

Please read this manual carefully as it will address most of your questions about the facilities and the tournament. PLEASE NOTE THE VIEWING TIMES, UNLOADING, REGISTRATION AND PARKING. If you do have questions, you may certainly contact any member of the committee, Glenwood High School, or the IHSA.

The IHSA believes that interscholastic activities enrich the educational experience, and we trust you will carry this mission into the State Drama/Group Interpretation tournament.

See you at State!

Sincerely,

Susan M. Knoblauch  
Assistant Executive Director – IHSA

The information contained in this manual reflects plans that have been made to provide your school an outstanding State Tournament experience. Please remember, such things as inclement weather or on-site problems occurring during the tournament may make it necessary for the State Final Tournament Committee and/or the State Final Manager/Glenwood High School to make adjustments.

## **IMPORTANT TOURNAMENT LOCATIONS**

**Registration - Information:** Commons outside of Office 1 at Glenwood High School  
**Tournament Headquarters:** Office 1  
**Judges' Rooms:** DRAMA: Office 1 Conference Room  
 Group Interpretation: Teacher's Lounge Glenwood Elementary School

**Drama Competition:** Glenwood High School Auditorium  
*Dressing rooms (GHS) are available only during the session when the performance is scheduled.  
 Assignments will be made at the tournament.*

Dressing Room 1(354)  
 Dressing Room 3 (312)

Dressing Room 2 (357)

**Group Interpretation Competition (At GES):**

Prelims-Groups A & B (Fri.) and Finals (Sat.) -	Gym 507
Warm-up Space:	Choir Room 505
Performance Room:	Gym 507
Pre-Entrance Space:	Hallway in between Choir Room 505 and Gym 507
Group Interpretation Homerooms:	400 Hallway 1st Floor

**(Group A – Session 1 Friday)**

GI Show	#1 - Room 405	#4 - Room 429
	#2 - Room 411	#5 - Room 435
	#3 - Room 419	

**(Group A – Session 2 Friday)**

GI Show	#6 - Room 412	#8 – Room 418
	#7 - Room 424	#9 - Room 405

**(Group B – Session 3 Friday)**

GI Show	#10 - Room 411	#13 - Room 435
	#11 - Room 419	#14 – Room 412
	#12 - Room 429	

**(Group B – Session 4 Friday)**

GI Show	#15 - Room 418	#17 - Room 405
	16 - Room 424	#18 - Room 411

**(GI Finals Saturday)**

GI Show	#1- Room 405	#4- - Room 429
	#2 - Room 411	#5 - Room 435
	#3 - Room 419	#6- - Room 412
	#7 - Room 424 if necessary for ties	

## **REGISTRATION & VIEWING**

### **REGISTRATION**

Thursday, March 23, 2023

6:00 p.m. to 7:00 p.m.

Glenwood High School Commons East Entrance

Checks for \$100 for a drama entry and \$100 for a group interpretation entry must be made at this time payable to Glenwood High School. You will receive any additional pertinent information at registration.

### **DRAMA VIEWING – GHS Auditorium**

Thursday, March 23<sup>rd</sup>, 2023

6:00 p.m. to 7:00 p.m. - Technical Directors, Directors, Light and Sound Board\*

7:00 p.m. to 7:15 p.m. - Tech Crews

\*Questions answered for Technical Directors, Directors, Light and Sound Board Operators ONLY - no tech crews or actors will be allowed onstage at this time.

Tech crews will be given a demonstration of lighting & sound equipment, but there will be no “hands on” opportunity for individual schools at this time. “Hands on” time will be during the 15 minutes assigned to each show during the loading/unloading schedule.

NO DRAMA SETS WILL BE UNLOADED ON THURSDAY OR FRIDAY NIGHTS.  
FOLLOW THE ASSIGNED SCHEDULE FOR UNLOADING.

### **GROUP INTERPRETATION VIEWING – GES 507**

Thursday, March 23<sup>rd</sup>, 2023

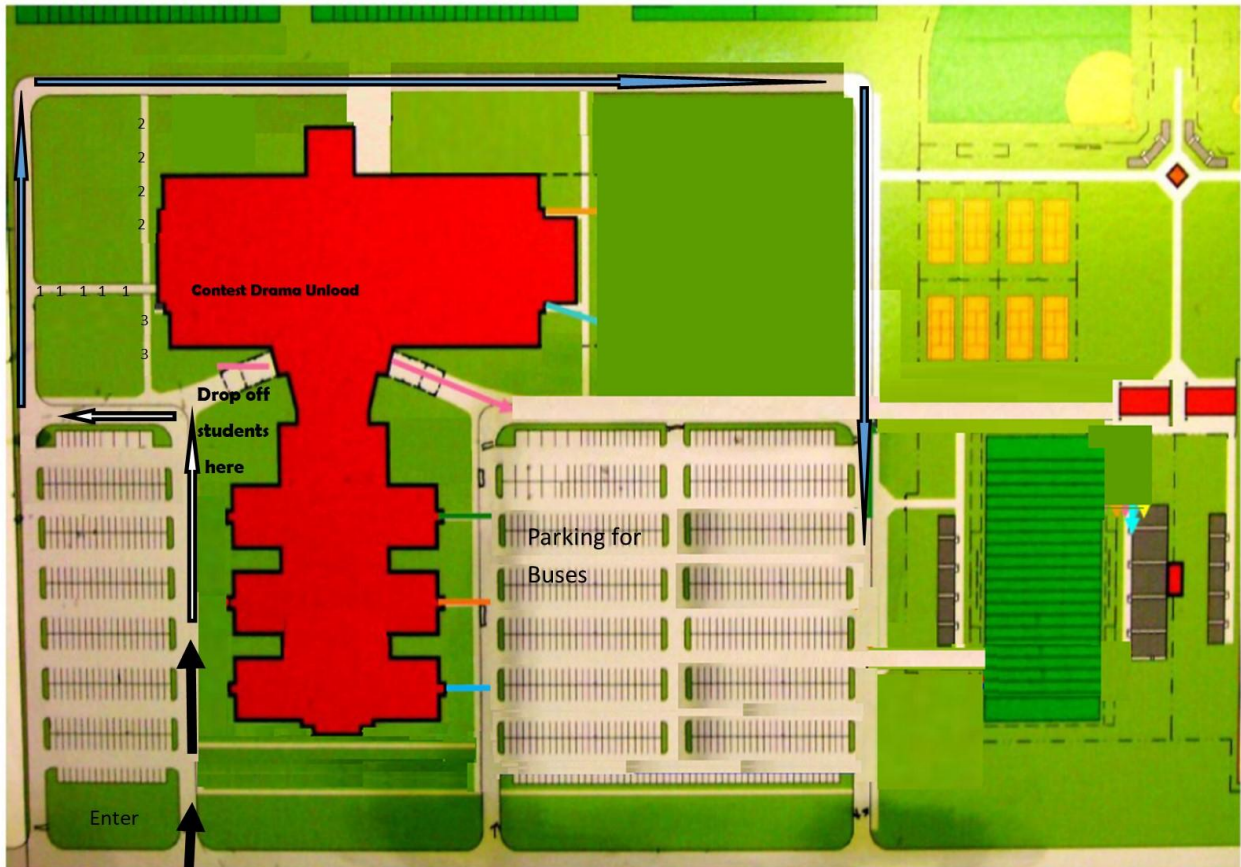
6:00 p.m. to 7:00 p.m.

Each GI group shall be allowed to enter the performance area to do a brief acoustic check during this time.

This check may only be done from 6:00 p.m. – 7:00 p.m. on Thursday, March 23 and a State Committee Member must be present.

## PARKING INSTRUCTIONS

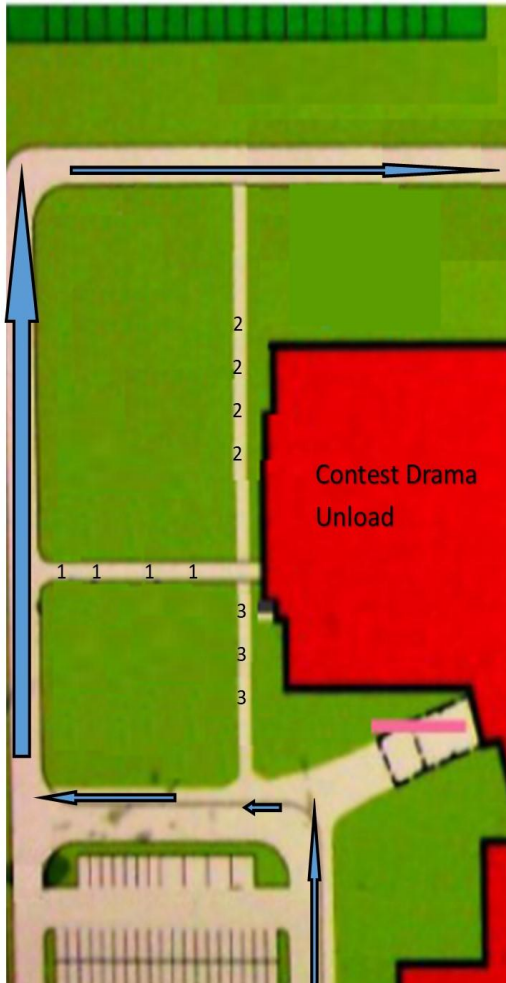
**Student Unloading:** All buses should unload competing students from the West parking lot at the commons entrance. Buses should then proceed around the school and park in the East lot.



Plummer Blvd.

**Bus Parking:** Buses can park in the East parking lot.

**Drama Set Unloading:** Enter the West lot and unload on the sidewalks outside of the theater. Show 2 should unload from the northernmost sidewalk as denoted with the 2's. Show 3 should unload from the southernmost sidewalk as denoted by the 3's. Show 1 should unload from the easternmost sidewalk as denoted by the 1's. Trucks may stay in those areas until the show finishes for loading.



### **Cars:**

Glenwood High School offers parking in both the East and West parking lots. Glenwood Elementary School also has one main parking lot in front of the school.

### **Truck/Trailers:**

Parking is located in an overflow lot in between Glenwood Elementary School and Glenwood High School. If this lot fills completely, the West lot of the high school may be used.

### **Truck/Trailer Parking Map:**



**Truck parking for Contest Drama**



## **2023 DRAMA PERFORMANCE SCHEDULE**

**GLENWOOD HIGH SCHOOL**  
**1501 E. Plummer Blvd., Glenwood, IL 62629**  
**Phone: 217-483-2424**

Auditorium contact: Ken Carter, Event Manager – Glenwood High School  
Cell: 217-622-2570 Office: 217-483-2424 kcarter@bcsd5.org  
Auditorium Manager: Nick Brockamp-- Glenwood High School  
Cell: 309-253-7906 Office: x2352 nbrockamp@bcsd5.org

### **Friday, March 24, 2023**

#### **Session One – Friday Morning**

8:30 a.m. PLAY 1  
9:45 a.m. PLAY 2  
11:00 a.m. PLAY 3

#### **Session Two – Friday Afternoon**

1:30 p.m. PLAY 1  
2:45 p.m. PLAY 2  
4:00 p.m. PLAY 3

#### **Session Three – Friday Evening**

6:30 p.m. PLAY 1  
7:45 p.m. PLAY 2  
9:00 p.m. PLAY 3

### **Saturday, March 25, 2023**

#### **Session Four – Saturday Morning**

8:30 a.m. PLAY 1  
9:45 a.m. PLAY 2  
11:00 a.m. PLAY 3

NOTE: On Saturday, all drama directors meet in the GHS Auditorium at approximately 1:15 p.m. (or as soon as the last Group Interp. & Contest Play have concluded) for awards directions.

House Capacity: The Glenwood High School Auditorium has seating available for 700 people. During competition, several rows in front of the judging area will not be available for seats.

## **DRAMA UNLOADING SCHEDULE**

### **FRIDAY – MARCH 24**

#### **SESSION ONE**

7:00 a.m.

Director meeting (morning directors only)

7:15 a.m.

Play 3 (11:00 a.m. Performance) Unloads

Play 1 (8:30 a.m. Performance) Sets light and sound cues

7:30 a.m.

Play 2 (9:45 a.m. Performance) Unloads-leave truck at dock

Play 3 (11:00 a.m. Performance) Sets light and sound cues

7:45 a.m.

Play 1 (8:30 a.m. Performance) Unloads-leave truck at dock

Play 2 (9:45 a.m. Performance) Sets light and sound cues

8:00 a.m.

Stage cleared except for personnel of Play 1

### **FRIDAY – MARCH 24**

#### **SESSION TWO**

12:00 Noon

Director meeting (afternoon directors only)

12:15 p.m.

Play 3 (4:00 p.m. Performance) Unloads

Play 1 (1:30 p.m. Performance) Sets light and sound cues

12:30 p.m.

Play 2 (2:45 p.m. Performance) Unloads-leave truck at dock

Play 3 (4:00 p.m. Performance) Sets light and sound cues

12:45 p.m.

Play 1 (1:30 p.m. Performance) Unloads-leave truck at dock

Play 2 (2:45 p.m. Performance) Sets light and sound cues

1:00 p.m.

Stage Clear except for personnel of Play 1

### **FRIDAY – MARCH 24**

#### **SESSION THREE**

5:00 p.m.

Director meeting (evening directors only)

5:15 p.m.

Play 3 (9:00 p.m. Performance) Unloads

Play 1 (6:30 p.m. Performance) Sets light and sound cues

5:30 p.m.

Play 2 (7:45 p.m. Performance) Unloads-leave truck at dock

Play 3 (9:00 p.m. Performance) Sets light and sound cues

5:45 p.m.

Play 1 (6:30 p.m. Performance) Unloads-leave truck at dock

Play 2 (7:45 p.m. Performance) Sets light and sound cues

6:00 p.m.

Stage Clear except for personnel of Play 1

### **SATURDAY – MARCH 25**

#### **SESSION FOUR**

7:00 a.m.

Director meeting (morning directors only)

7:15 a.m.

Play 3 (11:00 a.m. Performance) Unloads

Play 1 (8:30 a.m. Performance) Sets light and sound cues

7:30 a.m.

Play 2 (9:45 am Performance) Unloads-leave truck at dock

Play 3 (11:00 am Performance) Sets light and sound cues

7:45 a.m.

Play 1 (8:30 am Performance) Unloads-leave truck at dock

Play 2 (9:45 am Performance) Sets light and sound cues

8:00 a.m.

Stage Clear except for personnel of Play 1

## **DRAMA UNLOADING INSTRUCTIONS**

**UNLOADING:** All sets must fit through the bay doors to the woodshop and stage. 16' wide X 16' high. Schools must follow the assigned loading schedule.

Enter the West lot and unload on the sidewalks outside of the theater. Show 2 should unload from the northernmost sidewalk as denoted with the 2's. Show 3 should unload from the southernmost sidewalk as denoted by the 3's. Show 1 should unload from the easternmost sidewalk as denoted by the 1's. Trucks may stay in those areas until the show finishes for loading.

Truck loading, set-up, and strike should be practiced. Cooperation is needed to avoid any time restrictions. The competition is on a rigid time schedule. Organization and courtesy are crucial. Time is lost when trucks are not ready at the loading areas to load or to unload. PLEASE practice backing up your truck so that there can be three trucks ready in the loading areas.

Schools must unload at the specified time. No unloading is allowed on Thursday or Friday evenings.

**SET STORAGE:** Contest Play storage will occur in the stage left taped off area for play 2, (17'x14'6"). Stage left has another square area for additional storage that is 6' X 6'. Play 3 will store the sets on stage right (9'6" deep and 26' long). It has another storage area of 12' X 6' in front of the shed. Play 1 will be stored in the wood shop. It will have a 38' x 13'6" for storage. (This is an open space without a wall.) The timed set-up will begin from the designated placement of the sets in their storage areas. Sets must fit within the designated areas.

**PRE-PERFORMANCE LOAD IN:** Schools will have a total maximum of fifteen (15) minutes of elapsed time to unload their

vehicle(s) and store their entire set in a designated storage area. Scheduled time will be available to set and to record light cues during the load in times. Schools will also have usual set-up times prior to performance to finish setting light cues.

**SET-UP FOR PERFORMANCE:** Schools shall have a total maximum of twenty (20) minutes elapsed time in which they must both setup and strike the staging and set for performance (e.g. If sixteen (16) minutes are used to set up, then four (4) minutes are available for striking). Set up and strike time shall include any adjustment, addition or removal of lighting instruments and focusing projections on the cyc wall. When the set up is complete, the director may call for the cyc wall to be lowered, exposed, and may focus any effect to be used on that wall. The clock will NOT be stopped during this set-up time.

**SET STRIKE:** At the completion of each show, the sets, props, etc. of that show must be moved quickly across the designated strike line. After each school's strike, the school will be allowed five (5) minutes to move the set over the line through the assigned stage exit.

**SET LOAD-OUT:** All set pieces should be moved through the assigned stage exit door within 5 minutes. The truck should be moved and parked within the overflow lot or the West lot. FAILURE TO COMPLY WITH THIS PROCEDURE IS THE MAJOR REASON FOR DELAYS.

If a school violates times, judges will be advised that your show's load out has caused the next show to be late. Judges will be informed of the cause of any show's delays and can take that into consideration for rankings.

### **DIRECTORS' MEETING**

**Drama Director Meeting:** There will be a mandatory director's meeting with contest

personnel and stage managers (stage right) prior to each session.

## **SAFETY CHECK**

THE GLENWOOD HIGH SCHOOL STAFF AND STAGE MANAGERS RESERVE THE RIGHT TO STOP A SET-UP OR TEAR DOWN AT ANY TIME FOR DAMAGING SITUATIONS OR DANGEROUS PRACTICES.

Each school may call for a safety check after its set is up. However, this check should be made only if there is a possibility of a failure in the power source or if there is the possibility of danger to the general welfare of the cast, crew or audience. This check may only be called by the director of the show or by the Glenwood High School personnel.

The safety check cannot be used to move props, readjust lights or sound levels, or do anything that relates to the set-up of the play. If a power failure occurs or a dangerous situation arises, the IHSA State Final Committee members and Glenwood High School Event Manager will decide the necessary course of action.

Following this non-timed check, the set-up timing watches will be started again to permit the stage crew to make further adjustments within the time limit.

Practice set-up, striking and re-packing trucks under timed conditions. A great deal of damage can be done to the stage floor by groups scooting set pieces offstage. You may want to consider castors or wagons to move set pieces safely, quickly, and efficiently.

## **STAGE DIMENSIONS**

- Proscenium opening is 44' wide and 20' high.

- Proscenium opening to cyc is 35'.
- Proscenium open to apron edge is 12'.

## **STAGE REGULATIONS**

No major set building or painting will be allowed in the theatre or on stage.

Items cannot be nailed, taped, glued, pinned or attached in any way to any curtain, floor, wall, orchestra shell or ceiling. Glitter that does not readily adhere on the face, hair, costume or body is not allowed. Glitter may only be used if laminated or sealed. Sequins not firmly attached to costumes are expressly forbidden.

Scenery and properties must be fireproofed before they are brought into the theatre. Open flames will not be permitted.

## **DRAMA POINTS OF EMPHASIS**

1. One state tournament committee member will always be backstage to assist.
2. Unloading times will be strictly followed. If a school is not present to unload its set at its scheduled time, the next school will unload, and the tardy school will have to wait until the end of that unloading period.
3. The pit area will be covered but is NOT available as an acting area. Lights will not be adjusted to light the pit cover area.
4. All costumes and make-up should be taken to the assigned dressing room areas during the scheduled unloading period. There is access to these rooms during performances.
5. One person should be left to supervise any costumes and personal items left in the dressing rooms.
6. Each school is responsible to clean up their assigned dressing rooms after performing.

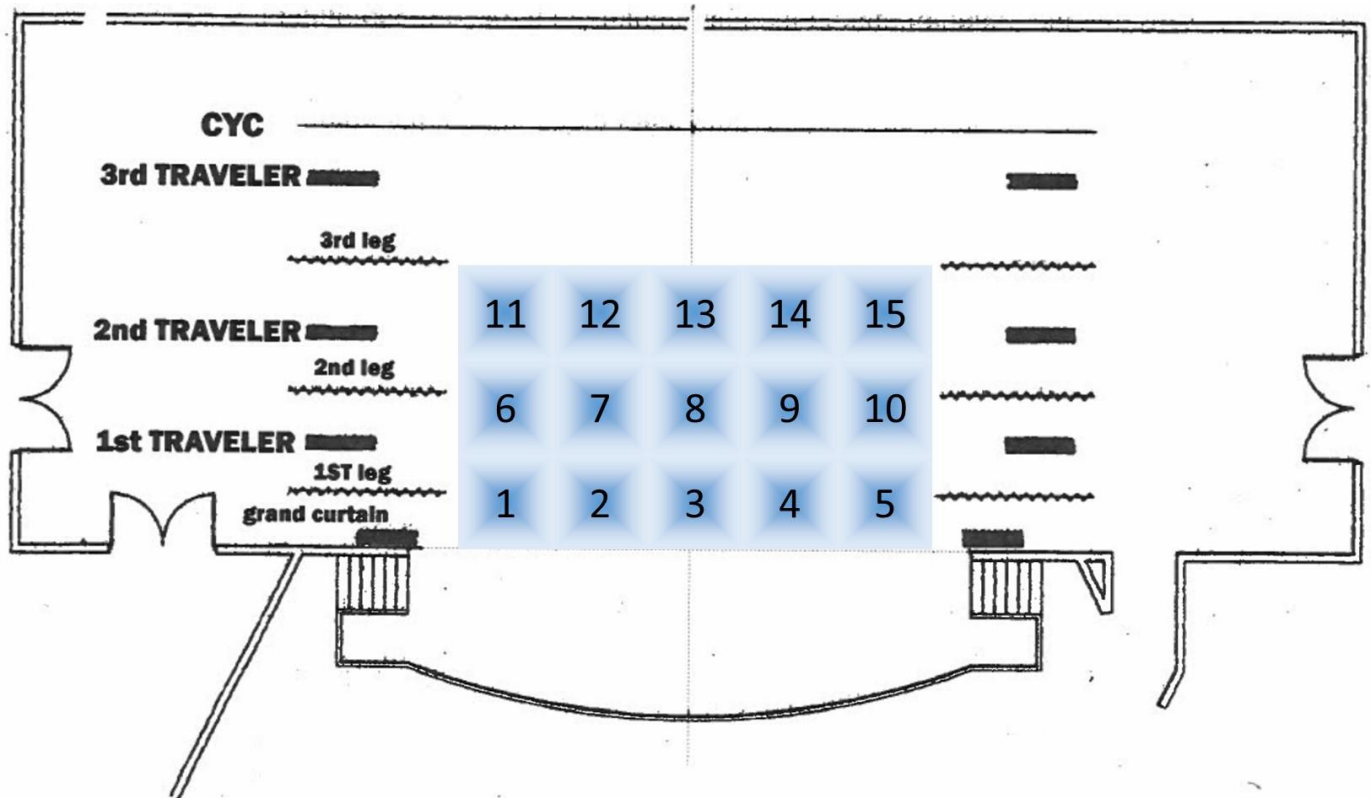
7. When a show is in progress, directors are responsible for maintaining QUIET in the dressing rooms.
8. Keep all areas clean and be polite and professional throughout the entire competition.
9. There is no public videotaping, photography, or recording allowed.
10. Fire Policy: No flames, fireworks, or pyrotechnics may be used. No scenery, props or platforms can cross the fire curtain line to prevent its full operation.

## **DRAMA RULES AND LIMITATIONS**

1. The competition shall be run under the terms and conditions of the IHSA. Please refer to your IHSA Drama/Group Interpretation manual for specific competition rules.  
<https://www.ihsa.org/documents/dgi/2021-22/school-manual.pdf>.
2. Contest plays shall have a maximum of twenty minutes elapsed time in which to both set-up and to strike their staging and set. Set-up and strike time shall include any adjustment to, any addition to or removal of lighting instruments. Any group exceeding this time limit shall automatically be dropped one rank for each 30 seconds of overtime.
3. The director must notify the onstage timers when the set-ups and strikes begin and end.
4. RUNNING is prohibited during set-up or strike. Appropriate shoes must be worn at all times.

5. Additional GHS/ GES equipment may not be used unless otherwise noted on the technical information pages.
6. The grand drape will only be used for masking. All masking, including positioning of the grand drape, will take place once set-up is complete.
7. Each school is responsible for the clean-up of its own areas (set storage areas, stage, and dressing rooms). Brooms can be provided.
8. Be courteous and polite to all working staff. It takes many hands to assist with a competition of this magnitude and we understand that competition can create a sense of nervousness for all, however we ask that all IHSA member schools show the GHS staff and all volunteers and workers that we appreciate the opportunity to perform in the GHS Auditorium.
9. To allow the Drama State Champion an opportunity to perform at awards, the first place award winning show will set up at approximately 1:30 p.m. on Saturday behind the grand drape. The performance shall begin immediately after the Group Interpretation State Champion performance and then be followed by the IHSA Awards Ceremony.
10. Each school is responsible for the security of its own property. GHS/ GES, IHSA, or any personnel involved with the management and operation of the competition may not be held responsible for lost or stolen items.

## GHS AUDITORIUM LIGHTING INFORMATION & STAGE MEASUREMENTS



### Lighting Information

- A 15 area light plot will be available. Each lighting area is approximately 8' wide x 8' deep.
- A cool and warm wash will be available
- 3 color LED White Cyc (Red, Green, Blue) with several preset colors available
- 4 Catwalk lighting specials available
- Light board is an ETC Ion with two fader wings running Eos 2.9.2

### Curtain Information

- The Grand Curtain and the 1st, 2nd, and 3rd Travelers can be fully opened and/or closed.
- All Legs are set to a 40' opening and cannot be adjusted.

### Sound

- Yamaha LS9-32
- Inputs:
  - Stereo Headphone
  - XLR
- Output - XLR

# SUBMASTERS TO AREAS

11	12	13	14	15
6	7	8	9	10
1	2	3	4	5

WARM WASH SUBS

26	27	28	29	30
21	22	23	24	25
16	17	18	19	20

COOL WASH SUBS

34		35		36
31		32		33

DOWN WASH SUBS

40		41		42
37		38		39

BACK WASH SUBS



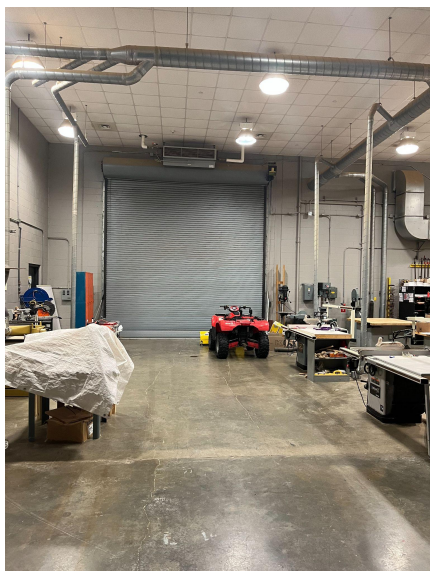
## DRAMA – A AUDITORIUM STORAGE PLAN



View of stage left storage area.



Stage right storage area



Storage for wood shop.



## **2023 GROUP INTERPRETATION PERFORMANCE SCHEDULE**

### **GLENWOOD ELEMENTARY SCHOOL – GYMNASIUM 507**

#### ***PRELIMINARY PERFORMANCE TIMES***

***Friday, March 24, 2023***

##### **Group A**

##### **Group B**

##### ***SESSION 1***

##### ***SESSION 3***

- |          |      |
|----------|------|
| 1. 8:00  | GI 1 |
| 2. 8:40  | GI 2 |
| 3. 9:20  | GI 3 |
| 4. 10:00 | GI 4 |
| 5. 10:40 | GI 5 |

- |      |       |
|------|-------|
| 2:45 | GI 10 |
| 3:25 | GI 11 |
| 4:05 | GI 12 |
| 4:45 | GI 13 |
| 5:25 | GI 14 |

##### ***SESSION 2***

##### ***SESSION 4***

- |          |      |
|----------|------|
| 6. 11:50 | GI 6 |
| 7. 12:30 | GI 7 |
| 8. 1:10  | GI 8 |
| 9. 1:50  | GI 9 |

- |      |       |
|------|-------|
| 6:40 | GI 15 |
| 7:20 | GI 16 |
| 8:00 | GI 17 |
| 8:40 | GI 18 |

#### ***FINAL PERFORMANCE TIMES***

***Saturday, March 25, 2023***

8:30 a.m. Group Interpretation 1

9:20 a.m. Group Interpretation 2

10:10 a.m. Group Interpretation 3

11:00 a.m. Group Interpretation 4

11:50 a.m. Group Interpretation 5

12:40 p.m. Group Interpretation 6

(1:30 p.m. Performance 7 if ties)

***NOTE: ALL FINAL ROUND GROUP INTERPRETATION DIRECTORS – Please meet in GHS AUDITORIUM at approximately 1:15 p.m. (or as soon as the last Group Interp & Contest Play have concluded) on Saturday, March 25 for awards direction and announcement of the state final champion to prepare for the final award performance.***

## **STANDARDIZED GROUP INTERPRETATION SET INSTRUCTIONS**

We will follow a 5/5/2 formula for timing of Group Interp. Pre-set, set-up, and strike:

### **PRE-PERFORMANCE SET MOVING:**

Groups will be allowed five (5) minutes to move the universal set pieces into the best set-up position behind the strike line or outside performance box in gym 127 as determined by the contest management.

**SET-UP FOR PERFORMANCE:** The time limit for the actual Group Interpretation set-up is 5 minutes and will begin upon a signal from the director/room chair. The clock may not be stopped during set-up or strike time unless the room chair see a safety issue. The set-up time stops when the performance space is clear of all cast and crew. No acoustic checks can be done outside the set-up time. Directors will give the two timers opening and closing cues for their shows after set-up. Any universal set pieces not being used by a performing school will be placed in a designated storage area after set-up timing is completed by combined host/performing personnel – this will not be counted on official set-up timing.

**SET STRIKE:** ALL CREW/CAST SHOULD REMAIN IN THE GI PERFORMANCE SPACE AFTER THE PERFORMANCE TO STRIKE THE SET IMMEDIATELY AFTER THE CONCLUSION OF THE SHOW. All audience, friends, and family should exit immediately to allow for a quick strike. Group Interpretation takedown must be done in 2 minutes. Set strike will begin upon a signal of the director/room chair. All set pieces must be moved behind the strike line before strike timing stops. Any group exceeding ANY of

these time limits shall automatically be dropped one (1) rank per judge per 30 seconds overtime.

## **DIRECTOR'S MEETING**

### **GROUP INTERPRETATION DIRECTOR**

**MEETING:** A brief (5 min.) mandatory directors' meeting for all performances will be held prior to each group/session. A director from each show **MUST** attend this meeting, which will be conducted by a member of the State GI Committee. Directors should bring five copies of the Group Interp. Cast Plot Sheet (showing performers' CLOSING positions and names) to this meeting. The Cast Plot Sheet form is available in this manual and on the Drama/GI menu page at IHSA.org. At this meeting the Cast Plot Sheets will be turned in to the Room Chair/State Committee Member, and the State Committee Member will go over any updated information needed, as well as answer directors' questions. **The meeting will take place in gym 507 just outside the performance space.**

**Group A DIRECTORS MEETING will be held at 7:45 a.m. on Friday, March 24, 2023**

**Group B DIRECTORS MEETING will be held at 2:30 p.m. on Friday, March 24, 2023**

***NOTE: THERE IS NO DIRECTORS' MEETING ON SATURDAY MORNING PRIOR TO THE FINAL ROUND OF GI COMPETITION.***

### **GI POINTS OF EMPHASIS**

1. One state tournament committee member will always be available to assist with questions.
2. Tournament staff is not responsible for items left in homerooms.

3. Each school is responsible to clean up their assigned homeroom after performing.
4. Keep all areas clean and be polite and professional throughout the entire competition.
5. There is no public videotaping, photography, or recording allowed.

8. Each school is responsible for the security of its own property. GES, GHS, IHSA, or any personnel involved with the management and operation of the competition may not be held responsible for lost or stolen items.

## **GI RULES AND LIMITATIONS**

1. The competition shall be run under the terms and conditions of the IHSA. Please refer to your IHSA speech manual for specific competition rules.

<https://www.ihsa.org/documents/dgi/2021-22/school-manual.pdf>.

2. GI's will be allowed five (5) minutes to move universal set pieces into best position for pre set up.

3. The time limit for GI's set-up is five (5) minutes. GI Strike is two (2) minutes.

4. RUNNING is prohibited during set-up or strike. Appropriate shoes must be worn at all times.

5. Additional GHS or GES equipment may not be used unless otherwise noted.

6. Be courteous and polite to all working staff. It takes many hands to assist with a competition of this magnitude and we understand that competition can create a sense of nervousness for all, however we ask that all IHSA member schools show the GES and GHS staff and all volunteers and workers that we appreciate the opportunity to perform at GES and GHS.

7. To allow the GI State Champion an opportunity to perform at awards, the first place award winning show will set up at approximately 1:30 p.m. on Saturday in the GHS AUDITORIUM to perform prior to the IHSA Awards.

# IHSA Group Interpretation Cast Plot Sheet

School: \_\_\_\_\_

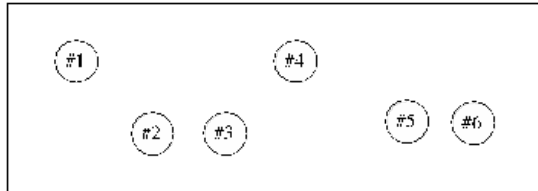
Prelim:     A             B             (Circle one)

Performance Name: \_\_\_\_\_

Time of Performance:   a.m.       p.m.



EXAMPLE:



## Directions:

To aid State Final judges in associating names and faces with performances in the selection of the All-State Group Interpretation Cast members, each school qualifying a Group Interpretation performance for the State Final is requested to **complete this form**, showing the position of all readers as they are when they announce their names to the judges (per example at right), and have five copies ready for distribution, one to each State Final judge, at the beginning of its Group Interpretation performance at the State Final.

## Key:

- #1 Mary Smith
- #2 John Jones
- #3 Jane Brown
- #4 John Doe
- #5 Sam Green
- #6 Sally Black

Draw in and list performers from Stage Right

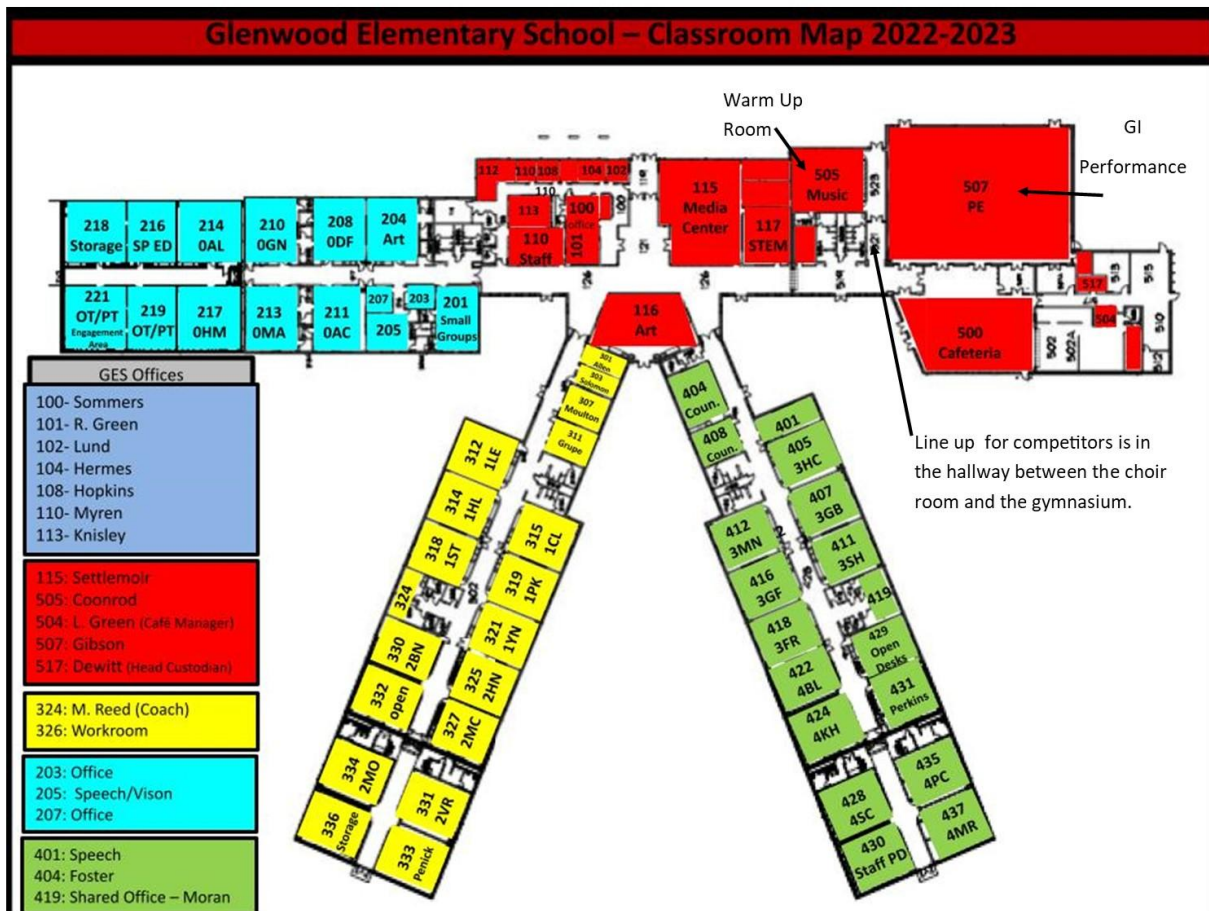
Key:

#1 \_\_\_\_\_  
 #2 \_\_\_\_\_  
 #3 \_\_\_\_\_  
 #4 \_\_\_\_\_  
 #5 \_\_\_\_\_  
 #6 \_\_\_\_\_  
 #7 \_\_\_\_\_

#8 \_\_\_\_\_  
 #9 \_\_\_\_\_  
 #10 \_\_\_\_\_  
 #11 \_\_\_\_\_  
 #12 \_\_\_\_\_  
 #13 \_\_\_\_\_  
 #14 \_\_\_\_\_

If there are more than 14 performers please list them on the back of the sheet.

## GROUP INTERPRETATION – FLOOR PLAN



## GROUP INTERPRETATION HOMEROOM AREA

400 level rooms will serve as the GI homerooms (see page 3).  
GI homerooms will be assigned at the contest site.

## Menu

Breakfast Pizza (slice)	\$2.00	Chips	\$1.00
Biscuits and Gravy	\$2.00	Pretzel & Nacho Cheese	\$4.00
Pizza (slice)	\$2.00	Chips and Nacho Cheese	\$4.00
Pulled Pork	\$4.00	Candy	\$2.00
Muffins	\$1.00	Drinks	\$2.00

**Friday, March 24, 7:30 a.m.–6:00 p.m.**  
**Saturday, March 25, 8:00 a.m.–1:00 p.m.**

Food is sold in the GHS commons.

## HOTEL INFORMATION

Hotel Information can be found on the following link on the IHSA website:

<https://www.ihsa.org/documents/dgi/2022-23/hotels.pdf>