



## **2015-16 IHSA STATE COMPETITIVE DANCE**

On behalf of the Illinois High School Association Board of Directors, the Competitive Dance Advisory Committee, and our member schools, it is my pleasure to congratulate you and your team for qualifying for the 2016 IHSA Dance State Finals. We appreciate all of the work that you have put forth to be at the State tournament and hope this is a memorable weekend.

A special welcome and congratulations are extended to all the participants of this year's competition. You are applauded for your hard work, practice and commitment which have enabled you and your school to accomplish success. I also want to commend the coaches of all of our competing schools who have trained and prepared these dancers to reach this high level of performance.

The IHSA believes that interscholastic activities enrich the educational experience. Regardless of the outcome of this competition we ask that you do your best and display outstanding sportsmanship to represent your school and team. You have spent many long hours preparing and we wish you the very best and hope you enjoy your day at the IHSA state dance tournament. You should be able to find in this packet the helpful information to make your trip to State as smooth as possible. Feel free to call our office if you have any questions. Thank you for your support of IHSA and for being a part of the inaugural IHSA state final experience. Congratulations!

Sincerely,

A handwritten signature in black ink, reading 'Tracie Henry', is positioned below the word 'Sincerely,'.

Tracie Henry,  
Assistant Executive Director  
Illinois High School Association



## COMPETITIVE DANCE STATE QUALIFIER INFORMATION

### TABLE OF CONTENTS

<b>I.</b>	<b>Qualifying School Information</b>	
A.	Checklist .....	Page 3
B.	Venue- Event Security .....	Page 3
C.	Contacts .....	Page 3
D.	Press.....	Page 3
E.	Housing .....	Page 3
F.	Tickets .....	Page 4
G.	Credentials.....	Page 4
H.	Trainer .....	Page 4
I.	Media.....	Page 4
J.	Competition Order.....	Page 4
K.	Parking .....	Page 4-5
L.	Access.....	Page 5
M.	Team Information (packet pick-up, warm up) .....	Page 5
N.	Competition Information (team photos, intro., awards) .....	Page 6
O.	Sportsmanship .....	Page 6
<b>II.</b>	<b>Event Security</b> .....	Page 7
<b>III.</b>	<b>Prohibited Patron Items</b> .....	Page 8
<b>IV.</b>	<b>Maps</b>	
A.	Parking Map .....	Page 9
B.	Bus Parking Map.....	Page 10
C.	Map of U.S. Cellular Coliseum.....	Page 11
D.	Event Flow Map .....	Page 12
<b>V.</b>	<b>State Final Student Media Information</b> .....	Page 14
<b>VI.</b>	<b>Request for School Certified Athletic Trainer</b> .....	Page 15
<b>VII.</b>	<b>State Final Time Schedule</b> .....	Page 16
<b>VIII.</b>	<b>Hotel Information</b> .....	Page 17



## 2015-16 IHSA STATE COMPETITIVE DANCE Qualifying School Information

This material will enable you to make preparations for your trip to the Competitive Dance State Final at the U.S. Cellular Coliseum in Bloomington and I encourage you to share pertinent information with your parents and fans.

### Checklist

#### IHSA State Final Checklist Did you...

1. *Confirm your housing by Jan. 26, 2016.* \_\_\_\_\_
2. *Make your request for an athletic trainer pass if you are bringing a **school certified trainer**.* \_\_\_\_\_
3. *Contact Matt Troha, 309-663-6377, for a student media pass for school yearbook/photographer* \_\_\_\_\_

### Venue

**Venue Inquiries:** Lauren Kincannon, Event Manager, U.S. Cellular Coliseum at (309) 434-2919.

### Event Security

Please disseminate the Event Security & Safety Information in this packet to all of your participants.

### Contacts

**Director of Ticketing:** Jane Everhart, U.S. Cellular Coliseum Box Office. For ticketing inquiries, please call (309) 434-2679 for all ticketing inquiries.

**Emergency Calls:** U.S. Cellular Coliseum – (309) 434-2843.

**Bloomington Normal Area Convention and Visitor's Bureau** – (800) 433-8226. IHSA has a link to the Visitors Bureau. It can be accessed through the IHSA Competitive Dance web page [www.ihsa.org](http://www.ihsa.org).

### Press

**Press Credentials/Information** – Matt Troha, Assistant Executive Director, IHSA Office (309) 663-6377 email to: [mtroha@ihsa.org](mailto:mtroha@ihsa.org).

### Housing

#### Pre-Tournament Arrangements Hotel Information

Included in this document is a list of blocked housing. Schools are not required to use this housing. A school representative must call to confirm housing by the **deadline of 12:01 p.m. on January 26, 2016** by identifying themselves as an IHSA state qualifying competitive dance team. Rooms will be released to the general public following the deadline. Schools are responsible for all housing expenses. Contact Matt Hawkins at [matt@visitbn.org](mailto:matt@visitbn.org) or call 800-433-8226, if you have any questions regarding housing.

#### Fan Housing

Fans can contact the Bloomington Normal Area Visitors Bureau either by phone or by Internet for hotel information. Also see Housing List in this packet.

## Tickets

### Ticket Information

The sale of tickets begins immediately. General and reserved tickets can be purchased through the U.S. Cellular Coliseum Box Office, online at [www.uscellularcoliseum.com](http://www.uscellularcoliseum.com) or by calling 309-434-2679. Ticket price is \$10.00 per day for children and adults. There is no charge for a child in arms. Limited luxury suites will also be available for purchase for each session of the State Final by contacting the U.S. Cellular. Service fees may apply for internet and phone orders. No discount tickets will be given. **The U.S. Cellular Coliseum does not accept checks.**

### General Public Tickets

Tickets for any session will go on sale at the Box Office to the general public beginning 60 minutes before the start of the first session. The price at the door will be \$10.00 per session. **Re-entry to Cellular Coliseum will be allowed during each session.**

## Credentials

### Qualifying Schools

Only 3 coaches and participants listed on the List of Participants will be credentialed. All coaches must meet the IHSA By-law 2.070 and have completed their PES and Concussion exams. All others must buy a ticket. Only credentialed participants are allowed in the warm up and staging areas. Credentials allow participants access to the venue the entire weekend.

## Trainer

An ambulance service will be available "on call" at all times. A trainer appointed by tournament management will be on duty during the tournament and will attend to participating competitors provided a coach is present at all times while the dancer is being attended. A First Aid Room will be available during the tournament for other emergencies. **A school is responsible for furnishing its own training supplies and for attending to its own dancers during the tournament for preventative injuries such as taping.** The trainer appointed by tournament management will be on duty to attend to dancers only in case of an emergency. A team's trainer must be issued and wearing a credentialed pass.

### Trainer Pass

If a school is bringing a school certified athletic trainer, the principal/athletic director may also request an additional pass for one trainer. This pass will be in the registration packets to be picked up in the lobby of the Pepsi Ice Rink prior to competition. IHSA event trainers will be on site, however they will only be addressing injuries occurring during the event. IHSA trainers are not available to tape competing student athletes.

## Media

### Media Passes for School Photographer

Each school participating in the state tournament may be represented by a student photographer/videographer and student reporter for the school newspaper and/or the school yearbook. Three Press/Photo passes will be issued to a school. These Press/Photo passes are not to be issued to anyone but students/school personnel working for the school newspaper and/or yearbook. The school principal/athletic director must make the request for the passes by e-mailing Matt Troha ([mtroha@ihsa.org](mailto:mtroha@ihsa.org)) at the IHSA. They must provide the names of the individuals attending, whether they are students or adults, and if the attending individuals will serve as reporters, photographer, videographers, etc. The student(s) must present a school ID to be issued credentials in the lobby of the Pepsi Ice Center. Media passes do not allow you into the team areas.

## Competition Order

### Competition Information

State final information will be updated on [ihsa.org](http://ihsa.org). Check this information regularly.

## **Parking**

### **Team Bus/Van**

Team vehicles will **unload at the South Circle Drive of the U.S. Cellular Coliseum** – on Roosevelt Street. After unloading, proceed to the designated parking area on the corner of Wood and Madison streets. If coaches are driving the team, then plan accordingly to allow plenty of time for parking in order to register and attend the coaches meeting. A shuttle will be available for the drivers. A tournament management representative will be at the team bus/van unloading area to give additional instructions for the fan bus parking.

### **Fan Bus**

Fan buses will unload in front of the U.S. Cellular Coliseum Box Office on Madison Street. It will be important that fan buses unload quickly and proceed immediately to the designated bus parking area on the corner of Wood and Madison streets. A tournament management representative will be at the fan bus unloading area to give additional instructions for the fan bus parking.

### **Handicap Parking**

Parking is available on the first floor of the parking deck on the south side of the coliseum. This parking deck is located at the corner of Olive/Lee streets.

## **Access in U.S. Cellular Coliseum**

**Access is only available in designated areas with your passes. A U.S. Cellular Coliseum representative will escort your team through the competition area.**

## **Team and Administrator Passes**

Passes will be issued to the teams. A school's team packet can be picked up in the lobby of the Pepsi Ice Center. All participants must be in team apparel or team warm-ups to be allowed to enter credentialed areas. In addition, if a school requested a trainer pass and/or school press pass it will be included in the team packet area. School Administrators attending the Competitive Dance State Finals can pick up a wristband for entry inside the lobby doors of the Pepsi Ice Center. Administrators do not need to make a formal request through the IHSA for a pass if they will be attending the State Finals on Friday or Saturday.

## **Team Seating in Arena**

A special seating area for participants will be located in Sections 101 and 102. Seating is also available in designated areas on the floor. Only persons in uniform will be allowed in this area. All credentialed coaches and participants will be allowed entry to the tournament for free during all sessions.

## **Handicap Seating**

Seating areas are located in Sections 107, 108 and 109 – behind the last row of seats.

## **Team Information**

### **Packet Pick-Up**

Coaches/School Administrators can pick up their team packet at the VIP entrance of the U.S. Cellular Coliseum from 6:30 p.m. to 8:30 p.m. on Thursday, Jan. 28, 2016 or in the lobby of the Pepsi Ice Rink after 7:30 a.m. on Friday, Jan. 29, 2016.

### **Warm-Up Information**

Teams may only enter the warm-up area (Pepsi Ice Center) at their scheduled report time. Mats will be provided by the IHSA in the warm-up areas for stretching and a full performance floor will also be provided for your scheduled time. The Pepsi Ice Center cannot be used as a general holding area or practice space. There will be no IHSA provided offsite practice space.

### **Designated Areas**

Neither tournament management, U.S. Cellular Coliseum, nor the IHSA will assume responsibility for any losses while on the premises. For reasons of safety and security, only dancers, coaches and team personnel with the Participant Passes or Coaches Passes will be allowed in the designated areas.

### **Locker rooms**

Coaches, please have your teams dressed and ready when arriving at the U.S. Cellular Coliseum. General locker rooms and restrooms will be available near the warm-up area that will be shared by all competing teams. We will not be able to provide a locker room or classroom for each team.

**Teams may only enter the Pepsi Ice Center at their scheduled report time.**

### **Competition Information**

Only the participants and team personnel who have been issued one of the Participant Passes are allowed to enter the designated area. Only participants that are in team apparel and on the List of Participants will be allowed on the floor. Three coaches will be allowed in the warm-up area and in the coaches' box for their team's performance. In addition, one certified athletic trainer will also be allowed in the team area. All others must buy a ticket and remain in arena seating.

### **Team Photos**

All teams will be photographed prior to warm-up by VIP Photography. Pictures can be viewed for order at [www.vipis.com](http://www.vipis.com).

### **Team Introductions**

When the team is announced, they may position themselves on the performance floor. Prior to this time the coach will be directed by event management to proceed to the music area. Music check will be available through a headset prior to each school's performance. Following the announcement and recognition of the team, once the team is set on the performance floor, the announcer will then say, "Team \_\_\_\_\_ the floor is now yours," the coach will then begin the performance music. After competing, the team must exit the competition floor immediately to their right.

### **Awards Ceremony and Photographs**

On Saturday following the Final Round of Competition, an awards ceremony will take place immediately following the conclusion of each Division. All competing teams in the respective division are asked to safely take the floor for announcement of awards. Participants can enter the arena floor from the staging area or any aisle. Please do not allow participants to climb over the dasher boards. Teams will be presented awards in the following order: third place, second place and then first place. Competitors receiving medals will be asked to line up in the List of Participant's order. Fans will not be allowed on the floor for photographs. Schools, parents and fans will have access to professional photos taken during the tournament. They can be viewed through the IHSA website and VIP link. All competing teams must stay on the floor until the conclusion of awards. Medals will be provided for school administration (superintendent, principal, athletic director) and 3 coaches, 1 trainer, and the credentialed participants who are listed on the List of Participants.

### **Sportsmanship**

**IHSA Position on Sportsmanship** - A dancer, coach, trainer or other team alternate(s) must not commit unsporting acts. This includes, but is not limited to, acts or conduct such as: disrespectfully addressing the crowds or an official; contacting an official or gesturing in such a manner as to indicate resentment; using profane or inappropriate language, music, or gestures; baiting or taunting during any aspects of competition.

The IHSA expects all school teams to uphold themselves to the highest level of sportsmanship at all times.

# EVENT SECURITY & SAFETY INFORMATION

- **Healthy Competitive Dance Environment**

The IHSA serves member schools by providing leadership for equitable participation in interscholastic activities that enrich the educational experience. School administrators, coaches, officials, fans, U.S. Cellular Coliseum and the IHSA share a very important responsibility to the student-athletes that are participating in the state final competition at the U.S. Cellular Coliseum to provide equipment, facilities and an environment that is as free of risk as possible. The concern for the health of our high school athletes participating in the state tournament is primary. Security and IHSA personnel at the coliseum have been instructed to monitor the participants and react quickly and reasonably when conduct becomes negative and drops below the level of expected behavior.

- ***Any act dangerous to others, is an unsafe behavior, incites participants or spectators to violent or abusive action, exhibits obscene gestures, or yells profanity and/or provocative type language toward an official, student-athlete, coach, spectator, bench and/or score table personnel is unacceptable.***

- **IHSA Event Security Policy**

To help insure the safest and most secure atmosphere for this IHSA State Final, event management at the U.S. Cellular Coliseum will diligently maintain the above standards. This will require complete cooperation by all competing teams, contest officials and fans. Security will always have priority over convenience; therefore, if you are requested to cooperate with event personnel in any manner, please do so promptly. Your assistance will enable our staff to fulfill its responsibility efficiently.

### **Persons and Possessions Subject to Search**

Please note that all persons and their possessions are subject to search upon entering any IHSA State event venue. Items prohibited under this policy or any item deemed by the IHSA or U.S. Cellular Coliseum staff to be dangerous or harmful to persons or property will be confiscated. Patrons of any IHSA state series contest who do not cooperate with event staff in their enforcement of this policy will be removed from the premises and law enforcement officials will be called as warranted. No ticket refunds will be granted in such cases.

Outside food and beverages including, but not limited to, glass bottles and containers, weapons, baby strollers, stickers and balloons are prohibited inside the U.S. Cellular Coliseum. We ask everyone's cooperation in this process.

### **Alcohol and Illegal Substances Prohibited**

The possession, distribution, sale, and or consumption of alcoholic beverages and illegal substances are prohibited on the property of any IHSA state series contest facility. State series hosts are required to make all state series contest sites, including the parking lots, fan accommodation areas, and other school or event venue property, alcohol and illegal substance free zones on the date or dates of any IHSA event being held at the site. Event personnel will enforce this policy rigorously.



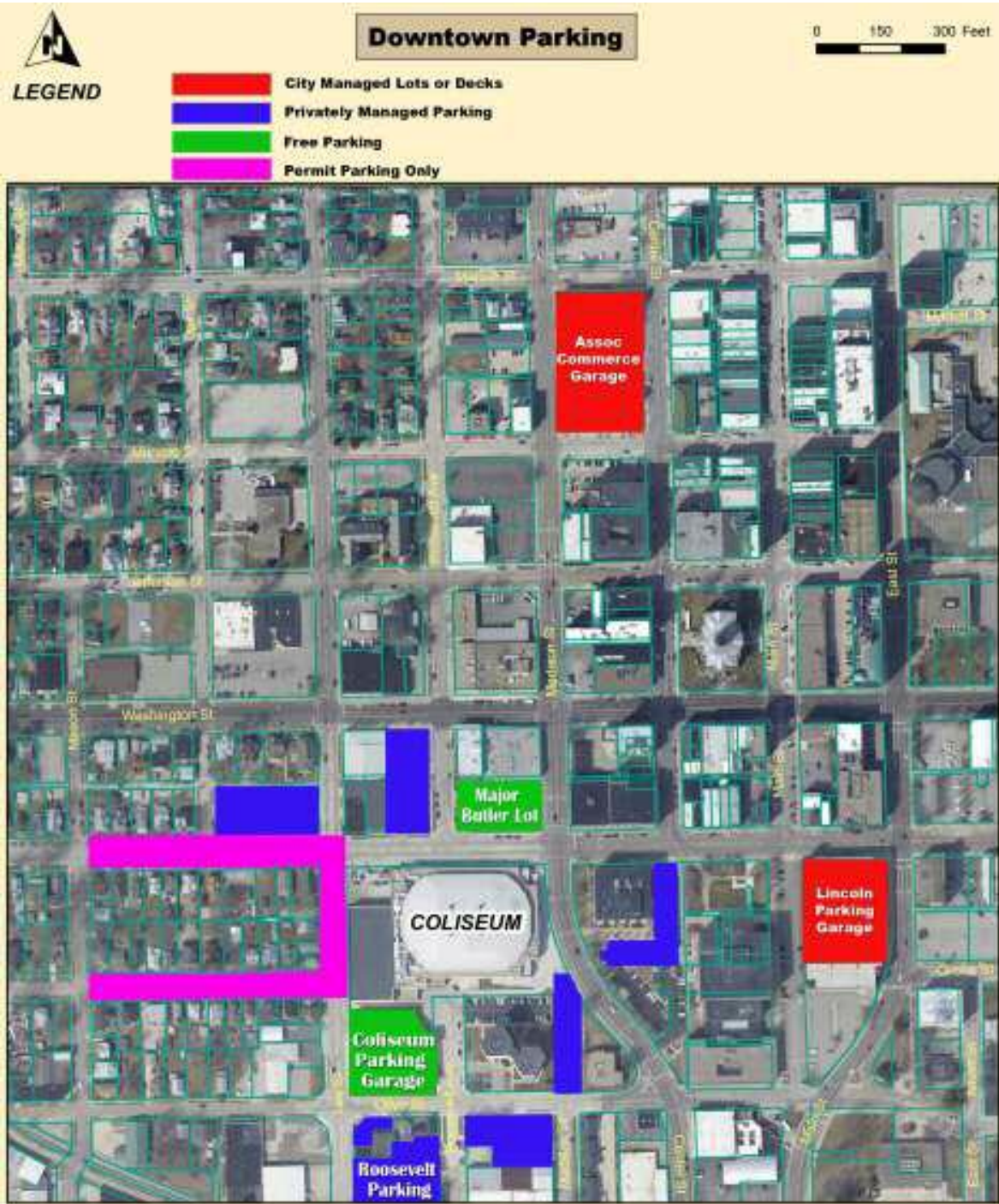
# PROHIBITED PATRON ITEMS

***Effective January 8, 2016, the following items are no longer able to be brought into the U.S. Cellular Coliseum.***

- Any outside food or beverages
- Alcohol of any type
- Bags or purses larger than 13" x 15" x 6" (equivalent to a small or medium sized purse)
- Smoking of any kind is prohibited, including e-cigarettes
- Weapons of any type including, licensed concealed carry weapons, knives, mace, blades, tools, etc.
- Drones or any other model aircraft
- Hazardous items (chemicals, paints, fuels, etc.)
- Cans, bottles, coolers or any similar containers
- Laser pens or laser products of any type
- Helium Balloons
- Fireworks
- Air horns or noise makers of any type
- Any sealed, wrapped packages (for employees, athletes, or performers)
- Selfie sticks or telescopic devices
- No signs, posters or messages on any garment with explicit language, profanity, or derogatory characterization directed toward any person
- Golf style umbrellas and/or umbrellas with a pointed tip are not permitted. Small, collapsible umbrellas that can fit into a purse or hand bag are permitted.

Any other item deemed unacceptable by U.S. Cellular Coliseum management.

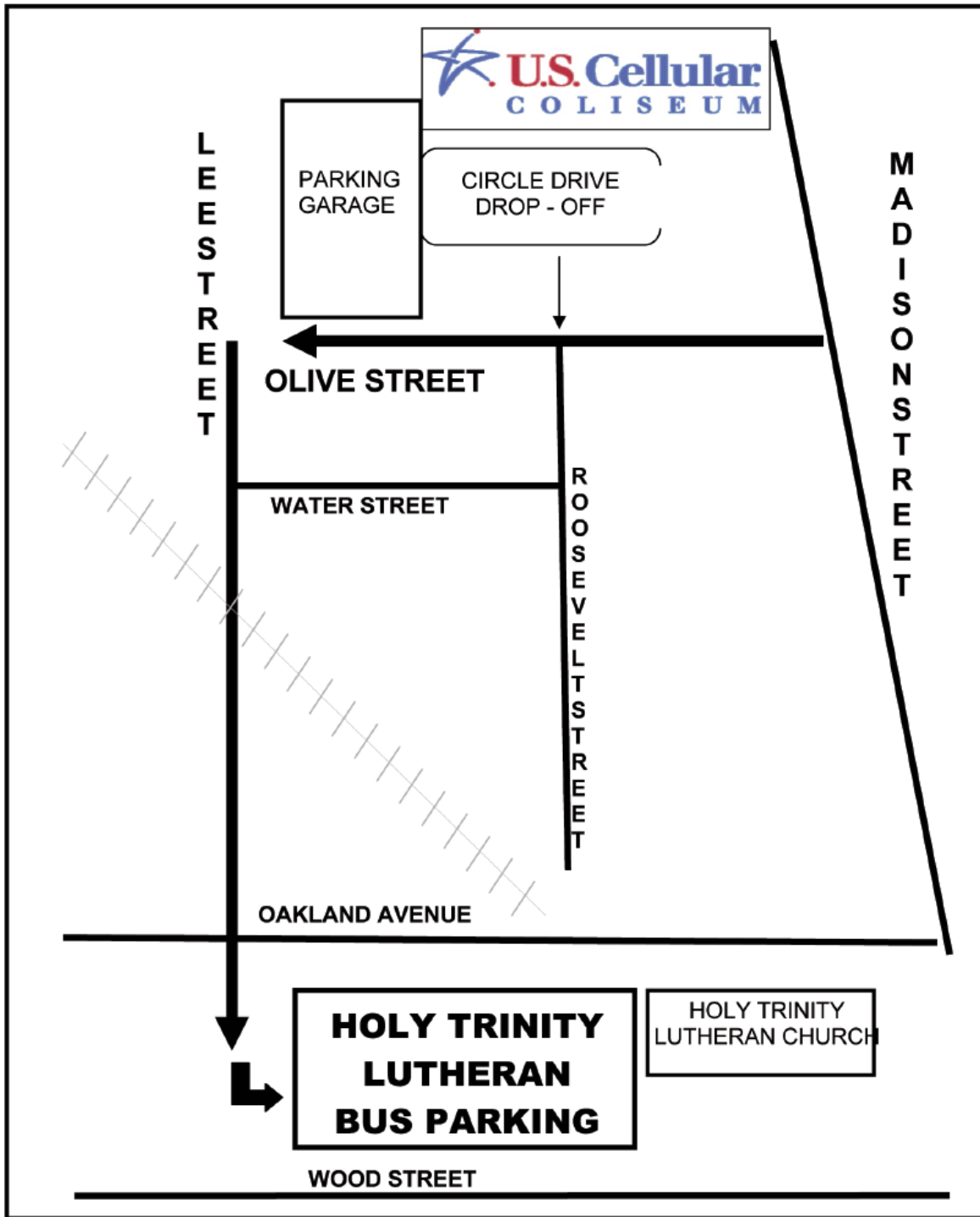


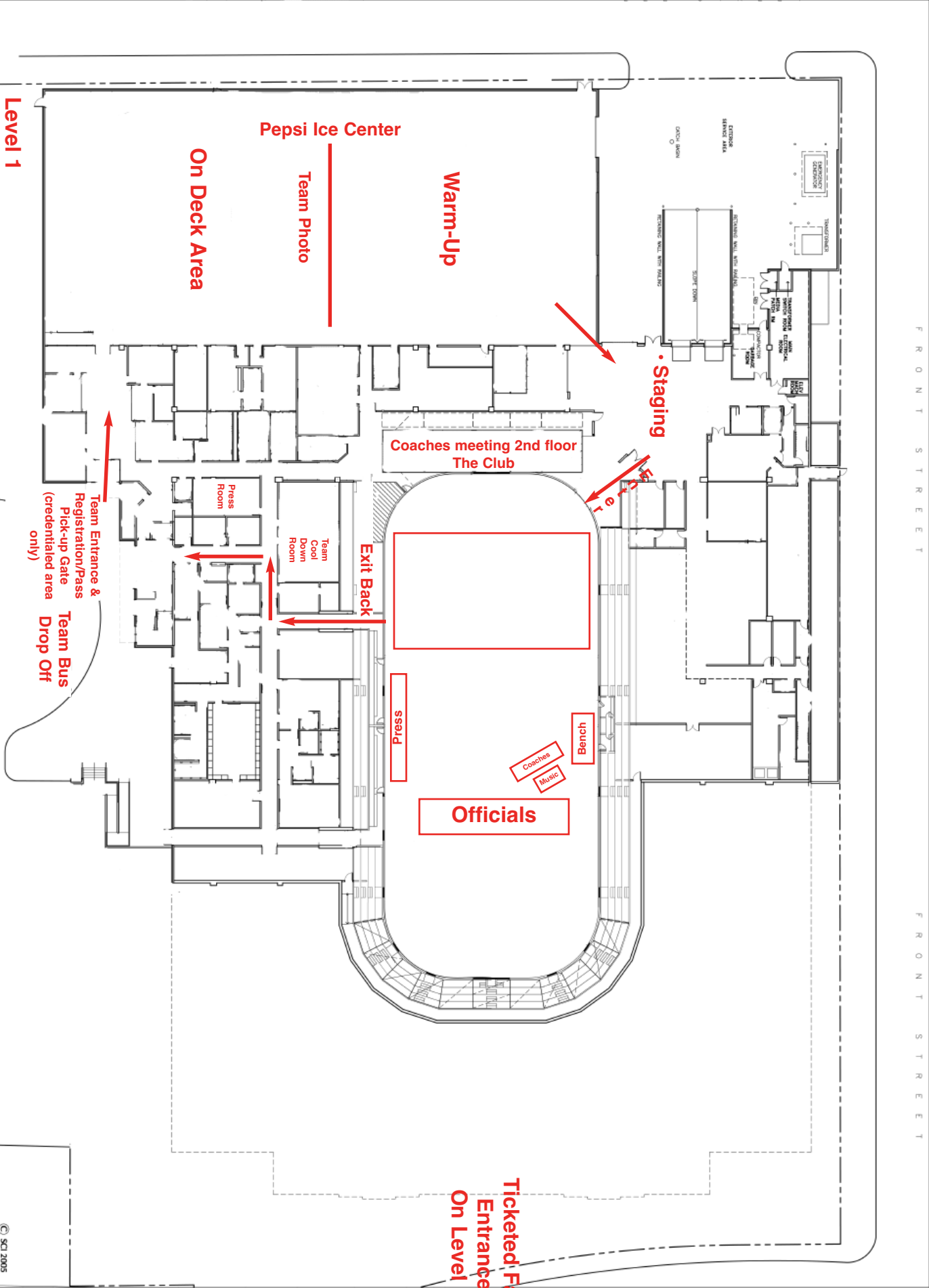


***On Friday, all of the regular City of Bloomington's fees and hourly restrictions apply to parking garages and street parking until 5:30pm. The Lincoln parking garage charges \$1.00/hour and the Assoc Commerce Garage allows free parking on the first level for up to 4 hours. On Saturday, all lots will allow free parking. Please make note of all signage surrounding these areas.***

***Privately owned parking lots surrounding the US Cellular Coliseum are not preferred parking places, and may charge a premium admission fee or tow your vehicle if improperly parked.***

# IHSA BUS PARKING

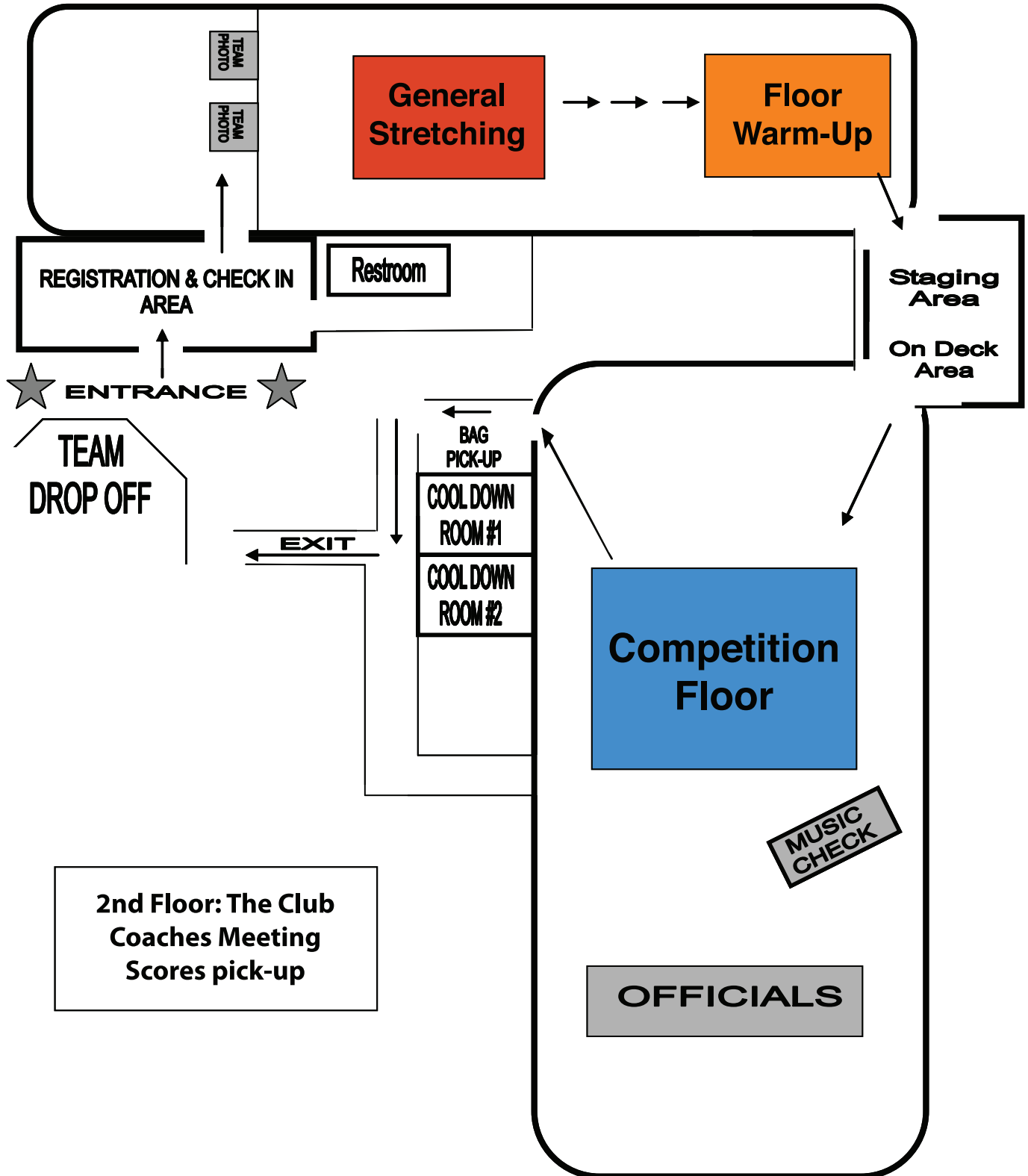




Level 1



# COMPETITIVE DANCE



### STUDENT MEDIA CREDENTIALS FOR PARTICIPATING SCHOOLS

Congratulations on qualifying for an IHSA state final in a team sport. In order to provide the best possible coverage of this event for your school newspaper, yearbook and AV club, etc. you are entitled to have up to three students receive credentials to cover this event as official media members. In the event that you have less than three students, an adult sponsor may be included on this list. To apply for student media credentials, please have your Athletic Director or an individual involved with the aforementioned programs email Matt Troha ([mtroha@ihsa.org](mailto:mtroha@ihsa.org)) at the IHSA with the following information:

- 1) The names of individuals attending
- 2) Whether they are students or adults
- 3) If the attending individuals will serve as reporters, photographers, videographers, etc.

Student media who are registering for credentials are expected to maintain a level of professionalism while covering this event. That includes no cheering while in the press box or game coverage area. Proper attire is also required. Wearing school shirts and colors is acceptable, but students wearing face paint, costumes, carrying props, etc. will be required to change before receiving credential clearance.

The individual applying for student media credentials will receive specific information on credential pick-up and media regulations at the event via email in the days leading up to the state final.

Please note that student media credentials are only available for state final events in team sports. Due to the sheer volume of schools who qualify in individual sports, our press facilities would be unable to accommodate student media from all participating schools in individual sports. Student media are also welcome to cover IHSA state final activities. Credentials are not required for these events, but please have your students check-in with state final personnel upon arrival for media coverage regulations.

**Please contact Matt Troha (309-663-6377) at the IHSA for any questions related to this document.**



Phone: 309.663.6377

Fax: 309.663.7479

## Request for School Certified Athletic Trainer

To: Tracie Henry, Assistant Executive Director

From: \_\_\_\_\_ High School

Date: \_\_\_\_\_, 2016

Our high school team has qualified for the 2016 Competitive Dance State Finals held at the U.S. Cellular Coliseum in Bloomington. Our school is sending 1 certified athletic trainer to cover the medical needs of our team.

Please make available an athletic training pass for the state finals

Name \_\_\_\_\_

Athletic Training credentials may be picked up in the lobby of the Pepsi Ice Rink with the team packets on Friday or Saturday.

Principals/Athletic Directors signature: \_\_\_\_\_

**This form should be faxed to the IHSA by January 26, 2016 to 309-663-7479.  
Passes can be picked up in the lobby of the Pepsi Ice Center with the team packets.**



## IHSA Competitive Dance State Final Time Schedule

### FRIDAY, JANUARY 29

---

#### SESSION 1

##### 1A Preliminaries

9:00 a.m.	Coaches Meeting (location Club Restaurant)
9:15 a.m.	Doors open to the State Final venue site
10:00 a.m.	Welcome
10:10 a.m.	Announcements & National Anthem
10:15 a.m.	First Performance 1A
12:15 p.m.	Officials Break
1:19 p.m.	Last Performance
1:30 p.m.	Announcement of 1A Finalists

#### SESSION 2

##### 2A & 3A Preliminaries

2:15 p.m.	Coaches Meeting (location Club Restaurant)
3:00 p.m.	Welcome
3:10 p.m.	Announcements & National Anthem
3:15 p.m.	First Performance (2A & 3A Alternate performances)
5:15 p.m.	Officials Break
7:21 p.m.	Last Performance
7:45 p.m.	Announcement of 2A Finalists
8:00 p.m.	Announcement of 3A Finalists

### SATURDAY, JANUARY 30

---

#### SESSION 3

##### 1A, 3A & 3A Finals

10:00 a.m.	Doors open to the State Final venue site
10:55 a.m.	Announcements & National Anthem
11:00 a.m.	1A Team Finals
12:15 p.m.	1A Team Awards
1:55 p.m.	Announcements & National Anthem
2:00 p.m.	2A & 3A Team Finals (2A & 3A Teams alternate performances)
3:45 p.m.	2A Team Awards
4:00 p.m.	3A Team Awards

#### \*\*IHSA Competitive Dance Information

<http://www.ihsa.org/SportsActivities/CompetitiveDance.aspx>

#### \*\*U.S. Cellular Coliseum

101 S. Madison St.

Bloomington, IL 61701

P: 309-434-2843

[www.uscellularcoliseum.com](http://www.uscellularcoliseum.com)

State Final Event Manager: Lauren Kincannon (P: 309-434-2919)



## IHSA Competitive Dance Housing

State qualifying teams have until 12:01 p.m. on January 26, 2016 to book rooms at the listed hotels for the reduced rates. After the January 26th deadline, rooms will be released to the general public. Details of the listed hotels can be found at [www.visitbn.org](http://www.visitbn.org) under the visitors, lodging links.

<b>Hotel</b>	<b>Phone Number</b>	<b>Rate</b>
Baymont Inn	309-662-2800	\$79
Candlewood Suites	309-862-4100	\$100
Comfort Suites -- East	309-452-8588	\$102
Country Inn & Suites – Airport	309-662-3100	\$89
Country Inn & Suites -- West	309-828-7177	\$119
Courtyard by Marriott	309-862-1166	\$109
Doubletree	309-664-6446	\$109
Eastland Suites	309-662-0000	\$99--\$169
Hampton Inn & Suites	309-452-8900	\$134
Hawthorn Suites	309-829-8111	\$90-\$110
Holiday Inn & Suites	309-662-4700	\$90
Holiday Inn Express West	309-820-9990	\$94
Marriott	309-862-9000	\$134
Parke Regency	309-662-4300	\$90
Ramada Limited	309-829-0900	\$90
The Chateau	309-665-5628	\$99