



## 2013-2014 IHSA STATE COMPETITIVE CHEERLEADING

On behalf of the Illinois High School Association Board of Directors, the Competitive Cheerleading Advisory Committee, and our member schools, it is my pleasure to congratulate you and your team for qualifying for the 2014 IHSA State Cheerleading Tournament. It is our hope that you are able to enjoy the competition and we appreciate all of the work that you have put forth to be at the State tournament. No other state in the country conducts interscholastic competition for schools like we do here in Illinois and we are thrilled that you are able to be a part of the opportunity.

A special welcome and congratulations are extended to all the participants of this year's competition. You should be commended for your hard work, practice and dedication which have enabled you and your school to achieve success. I also want to welcome and congratulate the coaches of all of our competing schools who have trained and prepared these students to reach this level of performance.

Here students have a chance to demonstrate the fruits of their hard work and dedication. As a participant you proudly represent your families, schools and communities in a very visible forum. Thank you for exhibiting what is best in the youth of our society. The sense of community pride shown in these performances is a tangible display of appreciation for excellence demonstrated by our member schools.

The IHSA believes that interscholastic activities enrich the educational experience. Regardless of the outcome of events we ask that you do your best and strive to display the best in sportsmanship and embrace all that can be learned through performance. You have spent many long hours preparing and we wish you the very best and hope you enjoy your day at the IHSA state cheer tournament. You should be able to find in this packet the information necessary to make your trip to State as smooth as possible. Feel free to call our office if you have any questions. Thank you for your support of IHSA and for being a part of the IHSA state final experience. Congratulations again and we hope you have the time of your life!

Sincerely,

A handwritten signature in black ink that reads "Susan M. Knoblauch". The signature is written in a cursive style.

Assistant Executive Director  
Illinois High School Association



## COMPETITIVE CHEERLEADING STATE QUALIFIER INFORMATION

### TABLE OF CONTENTS

<b>I.</b>	<b>Qualifying School Information</b>	
A.	Checklist .....	Page 3
B.	Venue- Event Security .....	Page 3
C.	Contacts .....	Page 3
D.	Press.....	Page 3
E.	Housing .....	Page 3
F.	Tickets .....	Page 4
G.	Credentials.....	Page 4
H.	Trainer .....	Page 4
I.	Media.....	Page 4
J.	Competition Order.....	Page 4
K.	Parking .....	Page 4-5
L.	Access.....	Page 5
M.	Team Information (packet pick-up, warm up) .....	Page 5
N.	Competition Information (team photos, intro., awards) .....	Page 5-6
O.	Sportsmanship .....	Page 6
<b>II.</b>	<b>Event Security</b> .....	Page 7
<b>III.</b>	<b>Maps</b>	
A.	Parking Map .....	Page 8
B.	Bus Parking Map.....	Page 9
C.	Map of U.S. Cellular Coliseum.....	Page 10
D.	Event Flow Map .....	Page 11
<b>IV.</b>	<b>State Final Pass Gate</b> .....	Page 12
<b>V.</b>	<b>State Final Student Media Information</b> .....	Page 13
<b>VI.</b>	<b>Request for School Certified Athletic Trainer</b> .....	Page 14
<b>VII.</b>	<b>State Final Time Schedule</b> .....	Page 15
<b>VIII.</b>	<b>Hotel Information</b> .....	Page 16
<b>IX.</b>	<b>Drug Testing Notice</b> .....	Page 17



## 2013-2014 IHSA STATE COMPETITIVE CHEERLEADING Qualifying School Information

This material will enable you to make preparations for your trip to the Cheer State Final at the U.S. Cellular Coliseum in Bloomington and I encourage you to share pertinent information with your parents and fans.

### Checklist

#### IHSA State Final Checklist: Did you...

1. Confirm your housing by Feb. 4, 2014 \_\_\_\_\_
2. Make your request for an athletic trainer pass if you are bringing a *school certified trainer* \_\_\_\_\_
3. Make your request for a student media pass for school yearbook/photographer \_\_\_\_\_
4. Make your request for administration passes \_\_\_\_\_

### VENUE

**Venue Inquiries:** Phil Charleston, Event Manager, U.S. Cellular Coliseum at (309) 434-2953.

### Event Security

Please disseminate the Event Security & Safety Information in this packet to all of your participants.

### CONTACTS

**Director of Ticketing:** Jane Everhart, U.S. Cellular Coliseum Box Office. For ticketing inquiries, please call (309) 434-2679 for all ticketing inquiries.

**Emergency Calls:** U.S. Cellular Coliseum – (309) 434-2843.

**Bloomington Normal Area Convention and Visitor's Bureau** – (800) 433-8226. IHSA has a link to the Visitors Bureau. It can be accessed through the IHSA Cheerleading web page [www.ihsa.org](http://www.ihsa.org).

### PRESS

**Press Credentials/Information** – Matt Troha, Assistant Executive Director, IHSA Office (309) 663-6377 <mailto:mtroha@ihsa.org>.

### HOUSING

#### Pre-Tournament Arrangements Hotel Information

Included in this mailing is a list of blocked housing. Schools are not required to use this housing. A school representative must call to confirm housing by the **deadline of 12:01 p.m. on February 4, 2014** by identifying themselves as an IHSA state qualifying cheer team. Rooms will be released to the general public following the deadline. Schools are responsible for all housing expenses.

#### Fan Housing

Fans can contact the Bloomington Normal Area Visitors Bureau either by phone or by Internet for hotel information. Also see Housing List in this packet.

## TICKETS

### Ticket Information

The sale of tickets begins immediately. General and reserved tickets can be purchased through the U.S. Cellular Coliseum Box Office, online at [www.uscellularcoliseum.com](http://www.uscellularcoliseum.com) or by calling 309-434-2679. Ticket price is \$10.00 per day for children and adults. There is no charge for a child in arms. Service fees may apply for internet and phone orders. No discount tickets will be given. **The U.S. Cellular Coliseum does not accept checks.**

### General Public Tickets

Tickets for any session will go on sale at the Box Office to the general public beginning 60 minutes before the start of the first session. The price at the door will be \$10.00 per session. **Re-entry to Cellular Coliseum will be allowed during each session.**

## CREENTIALS

### Qualifying Schools

Only 4 coaches and 16 small/20 medium/24 large and coed participants will be credentialed. All others must buy a ticket. Only credentialed participants are allowed in the warm up and staging areas. Credentials allow participants access to the venue the entire week-end.

## TRAINER

### Trainers

A doctor and ambulance service will be available “on call” at all times. A trainer appointed by tournament management will be on duty during the tournament and will attend to participating competitors provided a coach is present at all times while the player is being attended. A First Aid Room will be available during the tournament for other emergencies. **A school is responsible for furnishing its own training supplies and for attending to its own players during the tournament for preventative injuries such as taping.** The trainer appointed by tournament management will be on duty to attend to players only in case of an emergency. If a team’s trainer is to be on the team bench, in the warm up area or to tend to team, the team trainer must be issued and wearing a credentialed pass.

### Trainer Pass

If a school is bringing an school certified athletic trainer, the principal/athletic director may also request an additional pass for one trainer. This pass will be in the registration packets to be picked up in the lobby of the Pepsi Ice Rink prior to competition. IHSA event trainers will be on site, however they will only be addressing injuries occurring during the event. IHSA trainers are not available to tape competing student athletes.

## MEDIA

### Media Passes for School Photographer

Each school participating in the state tournament may be represented by a *student* photographer/videographer and *student* reporter for the school newspaper and/or the school yearbook. Three Press/Photo passes will be issued to a school. These Press/Photo passes are not to be issued to anyone but students/school personnel working for the school newspaper and/or yearbook. The school principal/athletic director must make the request for the passes by e-mailing Matt Troha (<mailto:mtroha@ihsa.org>) at the IHSA. They must provide the names of the individuals attending, whether they are students or adults, and if the attending individuals will serve as reporters, photographer, videographers, etc. The student(s) must present a school ID to be issued credentials in the lobby of the Pepsi Ice Center.

## COMPETITION ORDER

### Competition Information

State final information will be updated on [ihsa.org](http://ihsa.org). [Check this information regularly.](#)

## PARKING

### Team Bus/Van

Team vehicles will **unload at the South Circle Drive of the U.S. Cellular Coliseum** – on Roosevelt Street. After unloading, proceed to the designated parking area on the corner of Wood and Madison streets. If coaches are also driving the team, then plan accordingly to allow plenty of time for parking in order to register and attend the coaches meeting. A shuttle will be available for the drivers. A tournament management representative will be at the team bus/van unloading area to give additional instructions for the fan bus parking.

### **Fan Bus**

Fan buses will unload on Front Street in the designated loading and drop off zone. This area is located at the corner of Madison and Front streets and is next to the main entrances. It will be important that fan buses unload quickly and proceed immediately to the designated bus parking area on the corner of Wood and Madison streets. A tournament management representative will be at the fan bus unloading area to give additional instructions for the fan bus parking.

### **Handicap Parking**

A limited number of handicap parking spaces are available on the lower level of the parking deck on the south side of the U.S. Cellular Coliseum. Additional handicap parking is available in the Butler Lot on the North side of the U.S. Cellular Coliseum. This parking lot is located at the corner of Madison and Front streets.

## **ACCESS IN U.S. CELLULAR COLISEUM**

Access is only available in designated areas with your passes. A U.S. Cellular Coliseum representative will escort your team through the competition area.

### **Team and Administrator Passes**

Passes will be issued to the teams. A school's team packet can be picked up in the lobby of the Pepsi Ice Center. All participants must be in team uniform or team warm-ups to be allowed to enter credentialed areas. In addition, if a school requested a trainer pass and/or school press pass and administrator passes it will be included in the team packet area.

### **Team Seating in Arena**

A special seating area for participants will be located in Sections 101 and 102. Seating is also available in designated areas on the floor. Only persons in uniform will be allowed in this area. All credentialed coaches and participants will be allowed entry to the tournament for free during all sessions.

### **Handicap Seating**

Seating areas are located in Sections 107, 108 and 109 – behind the last row of seats.

## **TEAM INFORMATION**

### **Packet Pick-Up**

Coaches/School Administrators can pick up their team packet at the VIP entrance of the U.S. Cellular Coliseum from 6:30 p.m. to 8:30 p.m. on Thursday, Feb. 6, 2014 or in the lobby of the Pepsi Ice Rink after 7:00 a.m. on Friday, Feb. 7, 2014.

### **Warm-Up Information**

Teams may only enter the warm-up area (Pepsi Ice Center) at their scheduled report time. Mats will be provided by the IHSA in the warm-up areas. Teams may not bring their own mats into this area. The Pepsi Ice Center cannot be used as a general holding area or practice space. There will be no IHSA provided offsite practice space.

### **Designated Areas**

Neither tournament management, U.S. Cellular Coliseum, nor the IHSA will assume responsibility for any losses while on the premises. For reasons of safety and security, only players, coaches and team personnel with the Participant Passes or Coaches Passes will be allowed in the designated areas.

**Teams may only enter the Pepsi Ice Center at their scheduled report time.**

## **COMPETITION INFORMATION**

Only the participants and team personnel who have been issued one of the Participant Passes are allowed to enter the designated area. Only participants that are in uniform on the team roster will be allowed on the floor. Four coaches will be allowed on the "bench." In addition, one certified athletic trainer will also be allowed in the team area. Alternates who are in uniform and have also received participant passes are allowed on the "bench". All others must buy a ticket and remain in arena seating.

### **Team Photos**

All teams will be photographed prior to warm-up by VIP Photography. Pictures can be viewed for order at [www.vipis.com](http://www.vipis.com).

### **Team Introductions**

When the team is announced, they may position themselves anywhere on the edge of the competition floor. Prior to this time the coach may proceed to the music area. Music check will be available through a headset prior to each school's performance. Following the announcement and recognition of the team, the announcer will then direct the team to take the floor. No organized entrance is allowed. After competing the team must exit the competition floor immediately to their right.

### **Awards Ceremony and Photographs**

On Saturday following the Final Round of Competition, an awards ceremony will take place immediately following the conclusion of each Division. All competing teams in the respective division are asked to safely take the floor for announcement of awards. Participants can enter the arena floor from the staging area or any aisle. Please do not allow participants to climb over the dasher boards. Teams will be presented awards in the following order: third place, second place and then first place. Competitors receiving medals will be asked to line up in roster order. Fans will not be allowed on the floor for photographs. Schools, parents and fans will have access to professional photos taken during the tournament. They can be viewed through the IHSA website and VIP link. All competing teams must stay on the floor until the conclusion of awards. Medals will be provided for school administration (superintendent, principal, athletic director) and 4 coaches, 1 trainer, and the credentialed participants who are listed on the roster.

### **SPORTSMANSHIP**

**IHSA Position on Sportsmanship** - A participant, coach, bench personnel, trainer or other team alternate(s) must not commit unsporting acts. This includes, but is not limited to, acts or conduct such as: disrespectfully addressing the crowds or an official; contacting an official or gesturing in such a manner as to indicate resentment; using profane or inappropriate language, music, or gestures; baiting or taunting during any aspects of competition.

The NFHS and IHSA disapprove of any form of taunting which is intended or designed to embarrass, ridicule or demean others under any circumstance.

The IHSA expects all school teams to uphold themselves to the highest level of sportsmanship at all times.

## EVENT SECURITY & SAFETY INFORMATION

- **Healthy Cheer Environment**

The IHSA serves member schools by providing leadership for equitable participation in interscholastic activities that enrich the educational experience. School administrators, coaches, officials, fans, U.S. Cellular Coliseum and the IHSA share a very important responsibility to the student-athletes that are participating in the state final competition at the U.S. Cellular Coliseum to provide equipment, facilities and an environment that is as free of risk as possible. The concern for the health of our high school athletes participating in the state tournament is primary. Security and IHSA personnel at the coliseum have been instructed to monitor the participants and react quickly and reasonably when conduct becomes negative and drops below the level of expected behavior.

- *Any act dangerous to others, is an unsafe behavior, incites participants or spectators to violent or abusive action, exhibits obscene gestures, or yells profanity and/or provocative type language toward an official, student-athlete, coach, spectator, bench and/or score table personnel is unacceptable.*

- **IHSA Event Security Policy**

To help insure the safest and most secure atmosphere for this IHSA State Final, event management at the U.S. Cellular Coliseum will diligently maintain the above standards. This will require complete cooperation by all competing teams, contest officials and fans. Security will always have priority over convenience; therefore, if you are requested to cooperate with event personnel in any manner, please do so promptly. Your assistance will enable our staff to fulfill its responsibility efficiently.

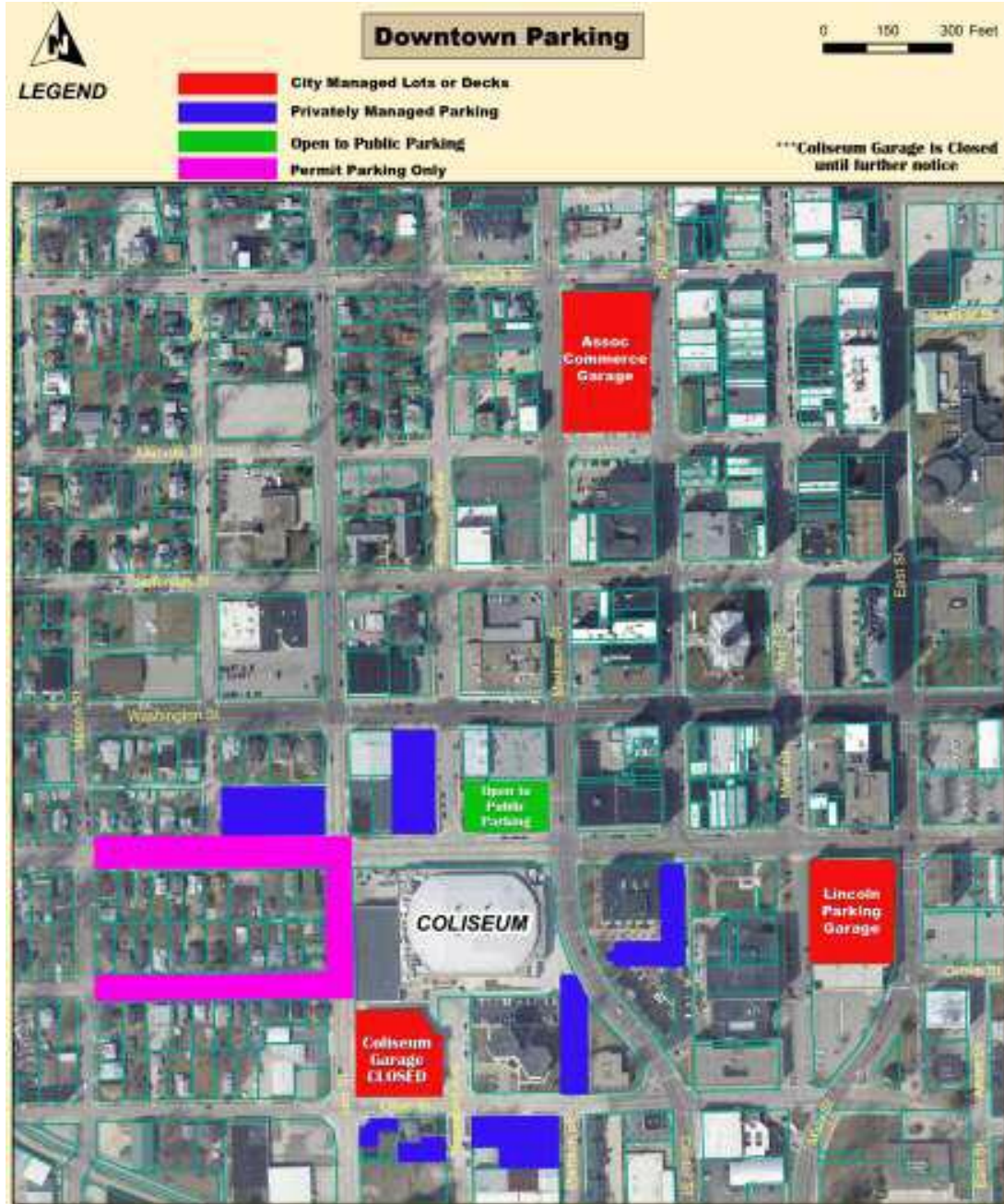
### **Persons and Possessions Subject to Search**

Please note that all persons and their possessions are subject to search upon entering any IHSA State event venue. Items prohibited under this policy or any item deemed by the IHSA or U.S. Cellular Coliseum staff to be dangerous or harmful to persons or property will be confiscated. Patrons of any IHSA state series contest who do not cooperate with event staff in their enforcement of this policy will be removed from the premises and law enforcement officials will be called as warranted. No ticket refunds will be granted in such cases.

Outside food and beverages including but not limited to glass bottles and containers, weapons, baby strollers, stickers and balloons are prohibited inside the U.S. Cellular Coliseum. We ask everyone's cooperation in this process.

### **Alcohol and Illegal Substances Prohibited**

The possession, distribution, sale, and or consumption of alcoholic beverages and illegal substances are prohibited on the property of any IHSA state series contest facility. State series hosts are required to make all state series contest sites, including the parking lots, fan accommodation areas, and other school or event venue property, alcohol and illegal substance free zones on the date or dates of any IHSA event being held at the site. Event personnel will enforce this policy rigorously.



***Suggested parking is in the Major Butler Lot (north of the US Cellular Coliseum) and the Lincoln Parking Garage, just two blocks from the US Cellular Coliseum. Several hundred spots are being made available for FREE to those attending the IHSA State Finals. Additional spots will be charged the regular hourly rates.***

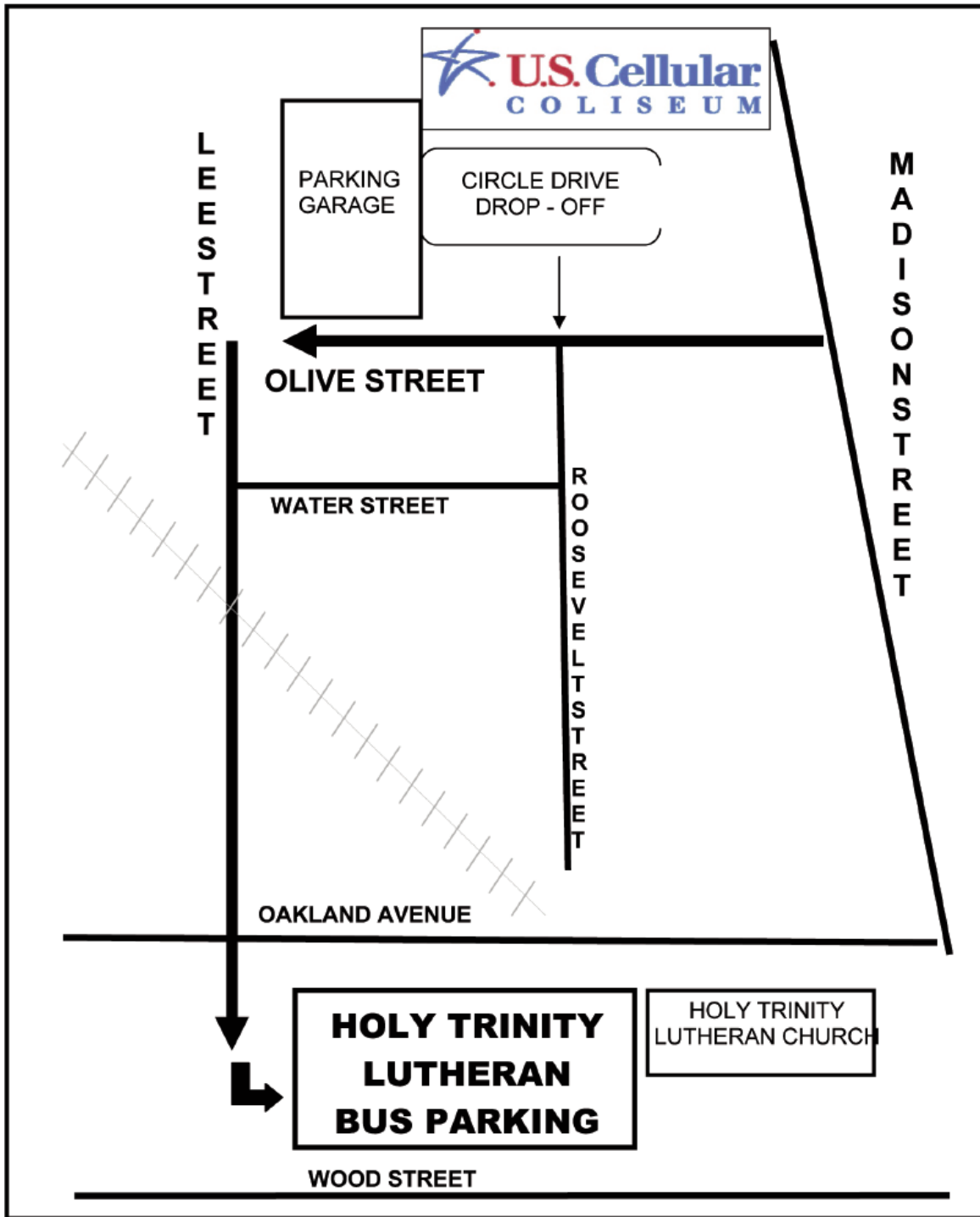
***On Friday, all of the regular City of Bloomington's fees and hourly restrictions apply to parking garages and street parking until 5:30pm. The Lincoln parking garage charges \$1.00/hour and the Assoc Commerce Garage allows free parking on the first level for up to 4 hours.***

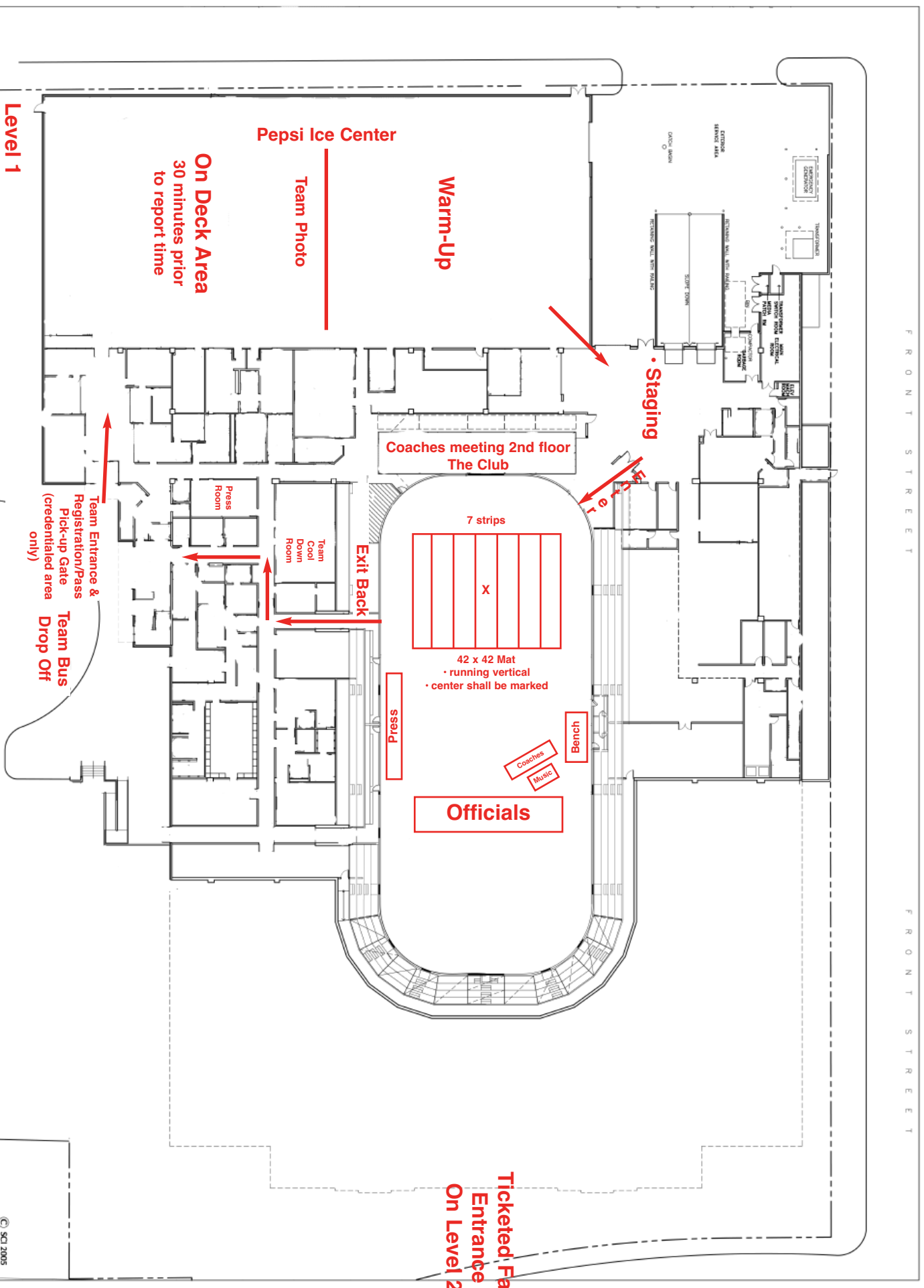
***On Saturday, all lots will allow free parking. Please make note of all signage surrounding these areas.***

***Privately owned parking lots surrounding the US Cellular Coliseum are not preferred parking places, and may charge a premium admission fee or tow your vehicle if improperly parked.***



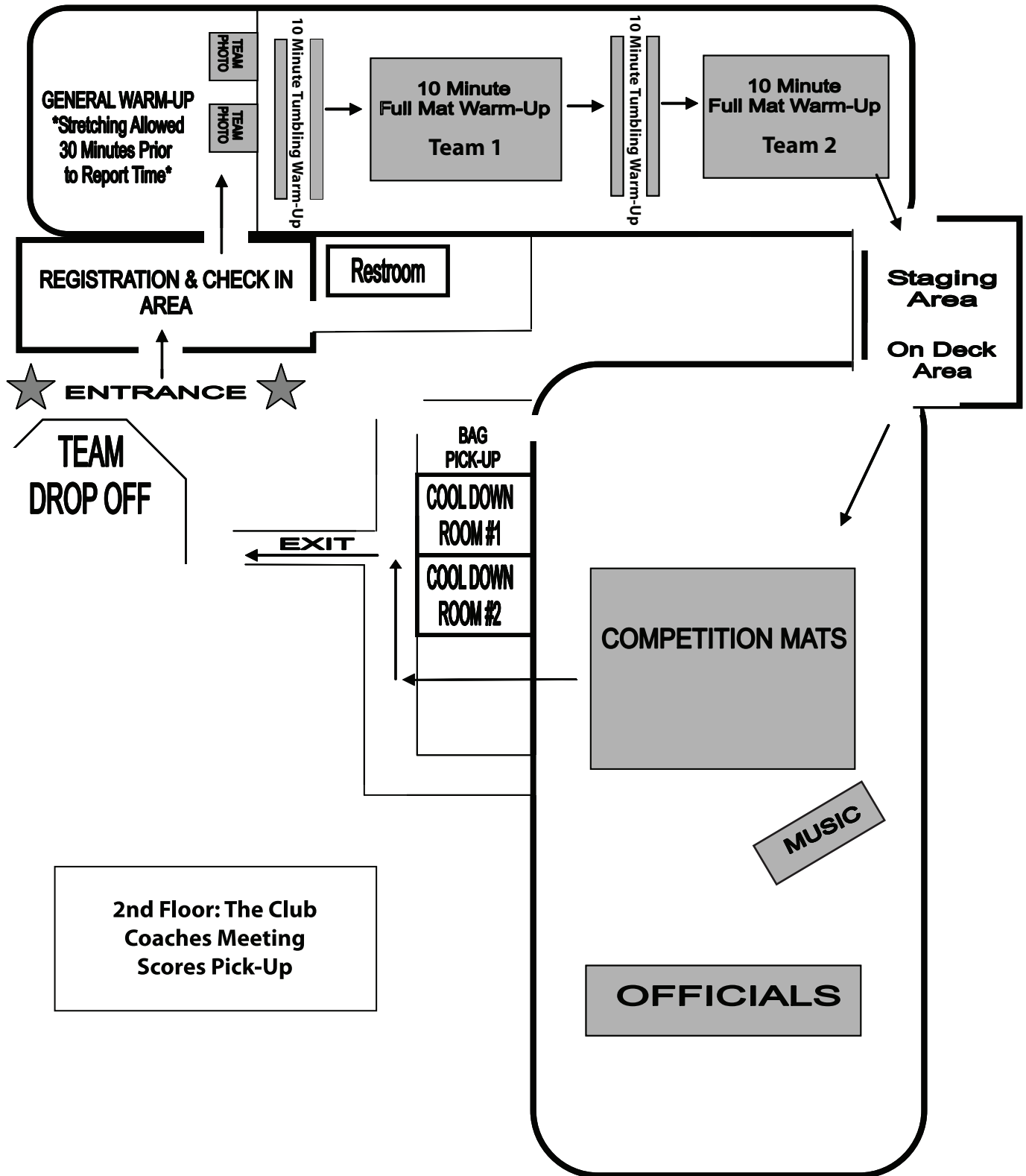
# IHSA BUS PARKING







# Competitive Cheerleading



# SAMPLE FORM

For typeable and printable form, click on this link:

[http://www.ihsa.org/documents/forms/frm\\_Cheerleading\\_State\\_Pass\\_Gate\\_List.pdf](http://www.ihsa.org/documents/forms/frm_Cheerleading_State_Pass_Gate_List.pdf)



## Competitive Cheerleading State Final Pass Gate

Illinois High School Association  
2715 McGraw Dr., Bloomington, IL 61704  
Phone: 309-663-6377  
Fax: 309-663-7479

The fields in this form will accept a cursor and can be filled out prior to printing.

**Administration representing or supervising a competing member school shall be admitted free to the Competitive Cheerleading State Finals. Participating school administration can pick up their passes in the lobby of the Pepsi Ice Center. This form must be faxed to the IHSA office at (309) 663-7479 by Wednesday, February 5, 2014 to ensure that your passes will be available.**

Competing School:

Level:

The following are allowed to have one guest:

Superintendent:

Assistant Superintendent:

Principal:

Assistant Principal:

Athletic Director:

Assistant Athletic Director:

Bus Driver:

**All other representatives from your school must pay to attend the IHSA tournament.**

In case of emergency or need to communicate changes to your school:

Contact Person:

School Phone:

Cell Phone:

Email:

**REMINDER: This form must be faxed to the IHSA office at (309) 663-7479 by Wednesday, February 5, 2014**

### STUDENT MEDIA CREDENTIALS FOR PARTICIPATING SCHOOLS

Congratulations on qualifying for an IHSA state final in a team sport. In order to provide the best possible coverage of this event for your school newspaper, yearbook and AV club, etc. you are entitled to have up to three students receive credentials to cover this event as official media members. In the event that you have less than three students, an adult sponsor may be included on this list. To apply for student media credentials, please have your Athletic Director or an individual involved with the aforementioned programs email Matt Troha ([mtroha@ihsa.org](mailto:mtroha@ihsa.org)) at the IHSA with the following information:

- 1) The names of individuals attending
- 2) Whether they are students or adults
- 3) If the attending individuals will serve as reporters, photographers, videographers, etc.

Student media who are registering for credentials are expected to maintain a level of professionalism while covering this event. That includes no cheering while in the press box or game coverage area. Proper attire is also required. Wearing school shirts and colors is acceptable, but students wearing face paint, costumes, carrying props, etc. will be required to change before receiving credential clearance.

The individual applying for student media credentials will receive specific information on credential pick-up and media regulations at the event via email in the days leading up to the state final.

Please note that student media credentials are only available for state final events in team sports. Due to the sheer volume of schools who qualify in individual sports, our press facilities would be unable to accommodate student media from all participating schools in individual sports. Student media are also welcome to cover IHSA state final activities. Credentials are not required for these events, but please have your students check-in with state final personnel upon arrival for media coverage regulations.

**Please contact Matt Troha (309-663-6377) at the IHSA for any questions related to this document.**



Phone: 309.663.6377

Fax: 309.663.7479

## Request for School Certified Athletic Trainer

To: Susie Knoblauch, Assistant Executive Director

From: \_\_\_\_\_ High School

Date: \_\_\_\_\_, 2014

Our high school team has qualified for the 2014 Competitive Cheerleading State Finals held at the U.S. Cellular Coliseum in Bloomington. Our school is sending 1 certified athletic trainer to cover the medical needs of our team.

Please make available an athletic training pass for the state finals

Name \_\_\_\_\_

Press/Athletic Training credentials may be picked up in the lobby of the Pepsi Ice Rink with the team packets on Friday or Saturday.

Principals/Athletic Directors signature: \_\_\_\_\_

**This form should be faxed to the IHSA by February 5, 2014 to 309-663-7479.  
Passes can be picked up in the lobby of the Pepsi Ice Center with the team packets.**

# IHSA Cheerleading Information



• [www.ihsa.org](http://www.ihsa.org) • Phone: 309-663-6377 • Fax: 309-663-7479 •

## 2014 IHSA Competitive Cheerleading State Final Time Schedule- Admission: \$10 per day

**Friday, February 7, 2014**

### SESSION 1

#### Small and Medium Team Preliminaries

8:00 a.m. – Coaches Meeting (in The Club)

8:15 a.m. – Doors of the U.S. Cellular Coliseum open to public

9:00 a.m. – Welcome

9:10 a.m.- Announcements & National Anthem

9:15 a.m. – First Performance

(Small and Medium team performances alternate)

12:55 p.m. – Last Performance

1:10 p.m. – Announcement of Small Division Finalists

1:20 p.m.- Announcement of Medium Division Finalists

(A coaches meeting for the advancing teams will take place in The Club immediately following the announcement of finalists)

### SESSION 2

#### Large and Coed Team Preliminaries

2:15 p.m. – Coaches Meeting (in The Club)

3:15 p.m. – Welcome

3:25 p.m.- Announcements & National Anthem

3:30 p.m. – First Performance

(Large and Coed team performances alternate)

7:10 p.m. – Last Performance

7:25 p.m. – Announcement of Large Division Finalists

7:35 p.m.- Announcement of Coed Division Finalists

(A coaches meeting for the advancing teams will take place in The Club immediately following the announcement of finalists)

**Saturday, February 8, 2014**

### SESSION 3

#### Finals in all Four Events

10:00 a.m. – Doors of the U.S. Cellular Coliseum open to public

10:55 a.m. – Announcements & National Anthem

11:00 a.m. – Small and Medium Team Finals

(Small and Medium team performances alternate)

12:30 p.m. – Small Team Awards

12:45 p.m.- Medium Team Awards

1:15 p.m.-2:15 p.m.- Coaches Roundtable, The Club

2:00 p.m.- Cheer Team Exhibitions

2:55 p.m. – Announcements & National Anthem

3:00 p.m. – Large and Coed Team Finals

(Large and Coed team performances alternate)

4:30 p.m. – Large Team Awards

4:45 p.m. – Coed Team Awards

**\*Team packet pick up is available in The Club at the conclusion of each division.**



## IHSA Competitive Cheerleading Housing

State qualifying teams have until 12:01 p.m. on February 4, 2014 to book rooms at the listed hotels for the reduced rates. After the February 4th deadline, rooms will be released to the general public. Details of the listed hotels can be found at [www.bloomingtonnormalcvb.org](http://www.bloomingtonnormalcvb.org) under the visitors, lodging links.

Hotel	Phone Number	Rate
Baymont Inn & Suites	309-662-2800	\$74
Bloomington Courtyard	309-862-1166	\$109.99
The Chateau	309-662-2020	\$95-\$105
Comfort Suites	309-452-8588	\$99.99
Country Inn & Suites-Airport	309-662-3100	\$109
Country Inn & Suites-West	309-828-7177	\$104-\$129
Eastland Suites	309-662-0000	\$107-\$159
Hawthorn Suites	309-829-8111	\$89.95-\$109.95
Holiday Inn & Suites	309-662-4700	\$90-\$115
Holiday Inn Express West	309-820-9990	\$94
Marriott	309-862-9000	\$121
Parke Hotel	309-662-4300	\$90
Quality Inn & Suites	309-662-7100	\$79.99D/\$10Extra
Quality Inn & Suites-West	309-829-7602	\$70 D/\$10 Extra
Ramada Limited & Suites	309-828-0900	\$89.99



## Drug Testing Notice

Congratulations on having competitor(s) for this year's Competitive Cheerleading State Finals, which will be held on February 7-8, 2014. This is a tremendous accomplishment, and one of which your school should be proud.

Please note that, in accordance with the policy adopted by the IHSA Board of Directors, performance-enhancing drug testing may take place at the state finals. Any student-athlete who competes during the state finals is eligible for testing. When testing occurs during any IHSA state series competition, schools will need to provide assistance to IHSA and Drug-Free Sport staff and ensure that any student(s) from your school selected for testing reports to the test site by established time. Additional notification regarding testing will be provided to those schools who have student-athletes selected for testing. School officials and coaches are encouraged to keep that notification confidential and not inform those selected student-athletes prior to their competition in the state finals.

As a reminder, selected individuals who fail to report for post-competition testing will be found to have violated the IHSA's Performance-Enhancing Drug Testing Policy and be subject to the appropriate penalties.