

2014-15

Girls Basketball

**Manual for
Schools**



Girls Basketball School Manual and Forms

I.	Table of Contents	
II.	Competing School Information	
	Girls Basketball Series Terms and Conditions.....	1-6
	Girls COUNTRY Financial Three-Point Showdown Terms and Conditions	7-10
	Competing School Cover Letter	11
	Important Deadlines and Dates	12
	School's Responsibilities Towards Hosting Officials.....	13-14
	Do What's Right! Sportsmanship Criteria	15
III.	Playing Rules	
	IHSA Basketball Rules Adoptions.....	16
	Return to Play Policy.....	17
	IHSA Protocol for Implementation of NFHS Sports Playing Rule for Concussions.....	18
IV.	Seeding Information	
	Season Summary Form Instructions	19-20
V.	State Final Program Information	
	State Final Program Information	21
	Instructions for Emailing Pictures.....	22
VI.	Score Zone Reporting Procedures	23
VII.	Tournament Information	
	Tickets (State Series and State Final).....	24-25
	General Time Schedule	26-27
	Bloomington/Normal Map	28
	ISU Parking Map	29
	Redbird Arena Seating Chart.....	30
	Hotel Information	31
	Internet Video Broadcasting Information	32
	Student Media Credentials for Competing Schools.....	33
VIII.	Three-Point Shooting Information	
	Regional School Participant Entry Form.....	34
	Participant Instructions.....	35-36
	Participant Information Form	37
IX.	Miscellaneous Forms (Downloadable)	
	Pass Gate Form	38
	Up-to-Date Statistics Form	39-40
	Request for Duplicate Awards.....	41-42
	Announcers Instructions (NEW).....	43
	Scorers and Timers Instructions.....	44-45

Revision History

Jan. 7 Three-Point Terms and Conditions II-B-2 & 3 revised dates
 Feb. 2 Terms and Conditions VI-B-2 time revisions



2014-15 Girls Basketball Series Terms and Conditions

In accordance with Section 1.450 of the IHSA Constitution, the Terms and Conditions governing the 2014-15 IHSA Class 1A, 2A, 3A and 4A Girls Basketball Tournament Series have been approved by the Board of Directors.

I. SCHOOL CLASSIFICATION

Competition in the IHSA Girls Basketball Tournament Series will be determined on an enrollment basis.

A. The classification of a school shall be determined on the basis of its total student enrollment figure reported to the Illinois State Board of Education in its Fall Housing Report on September 30 of the preceding school year.

B. For classification purposes, the total student enrollments for one-year high schools, two-year high schools, three-year high schools and high schools which enroll boys only or girls only shall be calculated as follows:

1) For one-year high schools, the total student enrollment figure reported shall be quadrupled.

2) For two-year high schools, the total student enrollment figure reported shall be doubled.

3) For three-year high schools, one-third of the total student enrollment figure shall be added to the total student enrollment figure reported.

4) For schools which enroll boys only or girls only, the total student enrollment figure reported shall be doubled.

C. A multiplier of 1.65 will be added to all non-boundary schools.

D. Schools participating in sports and activities operating under the three-class system shall be classified as follows:

1) Schools with enrollments 282 and below will be Class 1A.

2) Schools with enrollments of 282.01-586 will be Class 2A.

3) Schools with enrollments of 586.01-1403 will be Class 3A.

4) Schools with enrollments of 1403.01 and over will be Class 4A.

II. DATES AND SITES

Class 1A and 2A: In each class, games at thirty-two (32) Regional sites shall be held February 9-13, and the games at eight (8) Sectional sites shall be held February 16-17,

and 19. The four (4) Super-Sectional games shall be played on February 23. The Class 1A and 2A Semifinals and Finals of the State Final Tournament shall be played on February Feb. 27-28 at Redbird Arena, on the campus of Illinois State University, Normal.

Class 3A and 4A: Games at thirty-two (32) Regional sites shall be held February 16-20, and the games at eight (8) Sectionals sites shall be held February 23-24 and 26. The four (4) Super-Sectional games shall be played on March 2. The Class 3A and 4A Semifinals and Finals of the State Final Tournament shall be played on March 6-7 at Redbird Arena, on the campus of Illinois State University, Normal.

III. ON-LINE ENTRIES, WITHDRAWAL PROCEDURES, ELIGIBILITY, AFFIRMATIVE ACTION

The policy for Original Entry Deadlines, Late Entries, and Late Withdrawals shall be the policies and procedures regarding entry for all IHSA-sponsored sport/activities included in the 2014-15 Entry Policies and Procedures.

A. On-line Entries

All member schools must enter their school into the state series competition through the IHSA Schools Center on the IHSA Website at www.ihsa.org. The deadline for entry is **November 1, 2014**. **The 2014-15 Entry Policy and Procedures outlining the online entry procedures for all IHSA-sponsored tournaments can be found in the Schools Center on the IHSA website.**

B. Late Entries:

Any attempt to enter a sport or activity on-line after the established deadlines will be denied. Schools that wish to enter after the deadline will be considered late. To be considered for late entry, the Principal/Official Representative must contact the IHSA administrative officer in charge of that sport or activity. The penalty for late entry shall be a payment of \$100.00 for that sport/activity by the school.

C. Breach of Contract By-law 6.041 (Withdrawal Procedure)

To withdraw without penalty, the Principal must notify the IHSA Office, in writing, of the school's withdrawal from the respective sport by 2:00 p.m. on the Monday prior to the Wednesday Season Summary Form deadline.

If a school withdraws after the seeding meeting date/List of Participants due date but before the first competition, the school will be

charged a \$100 penalty and, if applicable, the cost of game officials and the host school guarantee provided for in the Terms & Conditions.

If a school does not officially withdraw prior to the first competition and/or does not show up for competition, the school will be charged a \$100 penalty, the cost of game officials and the host school guarantee according to the Terms & Conditions for the respective sport.

D. Eligibility

All member schools in good standing may enter one team under the provisions of IHSA By-law 3.054. (By-law 4.071 for activities)

E. Affirmative Action

Only girls shall be permitted to participate in the state series except as provided in the IHSA Affirmative Action Policy.

IV. HOST FINANCIAL ARRANGEMENTS

A. At Member School Sites:

1) The host school must charge admission and will be eligible to receive funding as listed below, plus the cost of game officials.

2) In Class 1A, 2A, 3A, and 4A Regional games, the host school shall pay for all local expenses and issue checks to game officials. Each host school shall receive a flat guarantee fee of \$2,000 and shall be reimbursed the cost of the game officials (3 officials) included in Item XI. The host shall retain 20% of the net income and submit remainder to the IHSA. In case of a negative balance, the host shall be reimbursed for the entire deficit.

3) In Sectional and Super-Sectional games the host school shall pay for all local expenses and issue checks to game officials. Each host school shall receive a guarantee of \$770.00 for each night of competition, and shall be reimbursed the cost of the game officials (3 officials) included in Item XI. The host shall retain 20% of the net income and submit the remainder to the IHSA. In case of a negative balance, the host shall be reimbursed for the entire deficit.

B. Sites Other Than Member Schools:

1. When Sectional and Super-Sectional tournaments are held at sites other than IHSA member schools, the IHSA administrator in charge will determine the financial arrangements with the host using current financial arrangements as guidelines.

C. Admission Prices:

1. The following ticket prices have been set by the IHSA Board of Directors. "In Advance" or "At the Door" admission shall be as follows:

- Regionals.....\$4.00
- Sectionals.....\$5.00
- Super-Sectional.....\$8.00

D. State Final Admission Prices:

Tickets for the Class 1A, 2A, 3A and 4A Girls Basketball State Final Tournaments at Redbird Arena will be general admission. Location of seats set aside for followers of the teams advancing to the State Final tournament(s) will be modified to reflect the ticketing arrangement. The price of general admission tickets is \$10.00. Season ticket packages will be made available for advance purchase first to IHSA member schools and then to the general public.

E. Rights Fees for TV and Radio:

1) Television Rights Fees to be charged by Local Managers and/or the IHSA are contained in the IHSA Television Policy.

2) Radio Fees which shall be charged are:

- a) Regional Contest = No Charge
- b) Sectional Contest = No Charge
- c) Super-Sectional = \$50.00 (Regular)
- d) State Final = \$150.00 (Regular)

3) Policy regarding media requirements for each Local Manager is contained in these Terms and Conditions.

V. TOURNAMENT ASSIGNMENTS AND SEEDING

A. Class 1A-4A Assignments for Schools: All Class 1A, 2A, 3A and 4A teams outside the Chicago suburban area will be assigned directly to Regional tournaments. Class 3A and 4A teams in the Chicago suburban area will be assigned to a Sectional complex. The Sectional complex will utilize true seeds for determining their Regional brackets unless conflicts arise from the seeds of the pre-determined hosts. The Chicago suburban area will be defined as the following counties – Cook, Northern Will, DuPage, Kane, Kendall, Lake and McHenry. By Policy, in sectionals that have a large geographic representation, a designated pairing may be used to reduce travel.

B. Tournament Series: The successive tournament series shall be designated respectively as Regional, Sectional, Super-Sectional and State Final. The IHSA Office will select all Regional, Sectional and Super-Sectional host sites. All schools, including the Chicago Public

Schools, entered in the state series will be assigned to a Regional or Sectional complex site based on geography.

C. Season Summary Form: Schools entered into the Class 1A, 2A, 3A and 4A state series will be required to submit a Season Summary Form on-line in the IHSA Schools Center. Failure to do so by **10:00 a.m.** on Wednesday January 29, 2014 for Class 1A and 2A, and **10:00 a.m.** on Wednesday, February 5, 2014 for Class 3A and 4A, will result in a school forfeiting its opportunity to participate in the seeding process. The Season Summary Form can be found in the IHSA Schools Center.

D. Class 1A/2A Seeding: All seeding will be conducted on-line through the IHSA Schools Center. Each school that completes the Season Summary Form by the established deadline shall have one (1) vote in the seeding process. No school shall vote for their own team. The link to seed the teams is located in the IHSA Schools Center and will be activated at **11:00 a.m.** on Wednesday, January 28. The deadline to seed teams is 12:00 noon on Thursday, January 29. Seeding will occur at the Regional or Sectional Complex level, depending on each school's first level tournament assignment. Neither the Super-Sectional nor the State Final shall be seeded.

E. Class 3A/4A Seeding: All seeding will be conducted on-line through the IHSA Schools Center. Schools competing in the Class 3A and 4A state series in the suburban Chicago area shall conduct an on-line Sectional complex seeding, while the remaining Class 3A and 4A schools shall conduct on-line Regional seeding. Each school that completes the Season Summary Form by the established deadline shall have one (1) vote in the seeding process. No school shall vote for their own team. The link to seed the teams is located in the IHSA Schools Center and will be activated at **11:00 a.m.** on Wednesday, February 4. The deadline to seed teams is 12:00 noon on Thursday, February 5. Seeding will occur at the Regional or Sectional Complex level, depending on each school's first level tournament assignment. Neither the Super-Sectional nor the State Final shall be seeded.

F. Sectional Pairings for Geographic Regionals: The Sectional tournament bracket for those Sectionals involving teams from geographic Regionals will be based on the luck of the draw.

G. Announcement of Pairings: The Class 1A and 2A pairings will be made by the IHSA and posted on the IHSA website no later than **Friday, January 30, 2014.** The Class 3A and 4A pairings will be made by the IHSA and posted on the IHSA website no later than **Friday, February 6, 2014.**

VI. TOURNAMENT STRUCTURE AND TIME SCHEDULES

A. Names:

The successive series shall be designated respectively, Regional, Sectional, Super-Sectional and State Final.

B. Time Schedules:

1) Single-Game Session Time Schedule

- 6:40 p.m. -- Start 15-minute pre-game warm-up on scoreboard clock
- 7:55 p.m. -- When 15-minute pre-game warm-up clock strikes 0:00, National Anthem
- 6:57-7:00 p.m. -- At conclusion of National Anthem, introduction of players and coaches
- 7:00 p.m. -- Tournament Game Tip-off

2) Two-Game Session Time Schedule

- 5:40 p.m.--Start 15-minute pre-game warm-up for 1st game on scoreboard clock
- 5:55 p.m.--When 15-minute pre-game warm-up clock strikes 0:00, National Anthem
- 5:57-6:00 p.m.--At conclusion of National Anthem, introduction of players and coaches
- 6:00 p.m. -- 1st Game Tip-off
- 7:00 p.m. (Approx.) -- 1st Game concludes
- 7:00-7:05 p.m. (Approx.) -- 5 minute break between games
- 7:05-7:20 p.m. (Approx.) -- Start 15-minute pre-game warm-up for 2nd game on scoreboard clock
- 7:20 p.m. (Approx.) -- When 15-minute pre-game warm-up clock strikes 0:00, National Anthem
- 7:23-7:26 p.m. (Approx.) – Introduction of players and coaches
- 7:27 p.m. (Approx.) – Tournament Game Tip-off

3) Super-Sectionals

- 6:40 p.m.--Start 15-minute pre-game warm-up on scoreboard clock
- 6:55 p.m.--When 15-minute pre-game warm-up clock strikes 0:00, National Anthem
- 6:57-7:00 p.m.--At conclusion of National Anthem, introduction of players and coaches
- 7:00 p.m.--Tournament Game Tip-off

Note: If a double header is held at a Super-Sectional site, the 1st game will tip off at 6:00 pm and the 2nd game will tip off at approximately 7:30 pm.

4) State Final Tournaments

**Class 1A and 2A
Friday, February 27, 2015**

Session 1 (Class 1A Semifinals)

- Game 1 12:00 p.m.
- Game 2 2:00 p.m. (Approx.)

Session 2 (Class 2A Semifinals)

Game 3 6:30 p.m.

Game 4 8:15 p.m. (Approx.)

Saturday, February 28, 2015

Session 3 (Class 1A Finals Session)

Game 5 12:00 p.m. - Loser Game 1 vs. Loser

Game 2 (**Third Place**)

Game 6 1:45 p.m. (Approx.) - Winner Game 1

vs. Winner Game 2 (**Class 1A Championship**)

Session 4 (Class 2A Finals Session)

Game 7 6:30 p.m. - Loser Game 3 vs. Loser

Game 4 (**Third Place**)

Game 8 8:15 p.m. - Winner Game 3 vs. Winner

Game 4 (**Class 2A Championship**)

**Class 3A and 4A
Friday, March 6, 2015**

Session 1 (Class 3A Semifinals)

Game 1 12:00 p.m.

Game 2 2:00 p.m. (Approx.)

Session 2 (Class 4A Semifinals)

Game 3 6:30 p.m.

Game 4 8:15 p.m. (Approx.)

Saturday, March 7, 2015

Session (Class 3A Finals Session)

Game 5 12:00 p.m. - Loser Game 1 vs. Loser
Game 2 (**Third Place**)

Game 6 2:00 p.m. (Approx.) - Winner Game 1

vs. Winner Game 2 (**Class 3A Championship**)

Session 4 (Class 4A Finals Session)

Game 7 6:30 p.m. - Loser Game 3 vs. Loser
Game 4 (**Third Place**)

Game 8 8:15 p.m. - Winner Game 3 vs. Winner

Game 4 (**Class 4A Championship**)

C. Sessions:

1) **Class 1A, 2A, 3A and 4A Regional Tournaments:**

a) Class 1A & 2A

1) After the opening night has been determined, no team will be required to play on three successive nights.

2) The two semifinal games shall be played on the same night or as single games on succeeding nights.

2) The Regional championship games will be played on Thursday or Friday nights.

3) **Class 1A, 2A, 3A and 4A Sectional Tournaments:**

a) Both semifinal games will be played on Monday; or

b) Both semifinal games will be played on Tuesday; or

c) One semifinal game will be played on Monday and the other semifinal game will be played on Tuesday.

d) The championship game will be played on Thursday.

4) **Class 1A, 2A, 3A and 4A Super-Sectionals:**

a) Class 1A and 2A Super-Sectional games will be played on Monday, February 23, 2015

b) Class 3A and 4A Super-Sectional games will be played on Monday, March 2, 2015

Note: Every session in the Class 1A, 2A, 3A and 4A tournament series shall begin with the National Anthem.

D. Playing Schedules:

No local manager is authorized to change the order of games as determined by the system adopted and announced by the IHSA Office. Games must be played as listed from top to bottom on the official schedule unless otherwise specifically indicated or a change is approved by the Executive Director

VII. ADVANCEMENT OF WINNERS

A. Class 1A-4A: The winners of the thirty-two (32) Regional tournaments shall advance to eight (8) Sectional tournaments consisting of four teams each. The winners of the eight (8) Sectional tournaments shall advance to four (4) Super-Sectional matches consisting of two teams each. The winners of the four (4) Super-Sectional tournaments shall advance to the State Final tournament.

VIII. TOURNAMENT RULES

A. Tournament Officials

1) Officials for all tournaments will be assigned through the IHSA Office.

2) In all tournaments, the decisions of the officials shall be final. The Board of Directors will not review decisions of officials, whether alleged errors are due to faulty judgment or misinterpretation of the rules.

(Note: Detailed information regarding assignment of officials will be posted on the IHSA Schools Center to all schools that are hosting a tournament one week in advance of the tournament's start.)

B. Squad Designation:

It is recommended that team rosters be forwarded to the host school. It is not required to designate a roster of 15 players.

C. Players in Team Uniform:

In each of the tournament games, no school shall have in uniform more than fifteen (15) eligible players. The fifteen (15) players shall be the ones designated in B above. No more than a total of twenty-two (22) persons from a school may be on the team bench.

D. Shirts and Players' Numbers:

In order to avoid possible confusion, each participating school should have two sets of shirts of different colors for its team. One set should be white and the other a dark color. Players must conform to the numbering requirements given in Rule 3-4 of the National Federation Basketball Rules.

1) The teams listed on the top line of the single-game playing bracket shall wear white uniforms and will be considered the home team. The team listed on the bottom line shall wear dark uniforms and will be considered the visiting team. In the Super-Sectional games, the two teams will be listed according to the Sectional centers from which each has advanced.

2) Responsibility of Official Scorer and Head Coaches—The Official Scorer must secure from the head coach of each team in each game of the tournament series the head coach's signature in the official scorebook just prior to the start of each game, thus confirming that the official scorebook is correct regarding players' numbers.

E. Unsportsmanlike Conduct:

Managers and officials have instructions to disqualify any player or coach guilty of profane or indecent language or of gross unsportsmanlike conduct.

IHSA By-Law 2.040 gives the Board of Directors complete authority to penalize a school or individual(s) for any unsportsmanlike conduct on the part of the principal, the coach, players, or any member of the faculty or Board of Education, or any other official representative of any participating school. This authority will definitely be exercised by the Board of Directors.

F. Balls:

Balls for all levels of the State Tournament Series are being provided by Wilson Sporting Goods Company, and only Wilson balls may be used. The IHSA will provide one (1) Wilson game ball for each Regional, Sectional and Super-Sectional site designated by the IHSA office.

G. Rules of Play:

The Official Basketball Rules as published by the National Federation of State High School Associations are adopted as official for the tournament series.

1) In all tournament games, the local tournament manager shall determine the team benches prior to the team warm-up period. Pre-game practice and the first-half basket for each team shall be the one further from its assigned bench.

2) At the State Final Tournament, team benches will be assigned prior to the warm up period for each game.

3) If for any reason gymnasiums or other conditions seem to make any rule modifi-

cations desirable, the local manager must communicate with the IHSA Office before announcing such modification. Interpretations and modifications of existing rules as outlined in the various state-sponsored meetings shall be rigidly adhered to.

4) In all tournament games, the referee shall sign the official scorebook at the conclusion of the game at either the scorer's bench or in the officials' locker room. If in the officials' locker room, the signing must be done in the presence of the host manager or his/her designee, and the official scorer.

5) In order to maintain the integrity of the playing surface and protect competitors, local managers of all tournament contests must create a safe zone along each baseline that will be devoid of any persons (such as cheerleaders or media personnel) or other obstructions. This safe area will extend a minimum of three (3) feet from the baseline towards the facility's back wall, stage, or bleachers.

H. State Final Game Time Outs:

For all televised games during the State Finals, only three (3) 60-second time-outs may be charged to each team during a regulation game. Each team is entitled to one additional 60-second time-out during each extra period. Unused time-outs may accumulate and may be used at any time.

IX. TOURNAMENT POLICIES

A. Presale Tickets:

1) Host schools must provide presale tickets to schools competing in Regional finals, Sectional Semifinals and Finals, and Super-Sectionals (if hosted by a member school), if requested to do so by a competing team.

2) Competing teams are responsible for all of the presale tickets they are given. All unsold tickets must be returned to the host at least three (3) hours prior to game time.

Regional Final: Requests for presale tickets at the Regional finals must be made by Monday, February 10 for Class 1A and 2A and Monday, February 17 for Class 3A and 4A.

Sectional Semifinals and Finals: Requests for presale tickets at the Sectional Semifinals and Finals must be made by Thursday, February 13 for Class 1A and 2A, and Thursday, February 20 for Class 3A and 4A.

3) See the ticket distribution plan for Super-Sectional information.

B. All-Star Teams:

No officers of the tournament, game officials or anyone serving under the supervision of the Illinois High School Association may cooperate in any way in the selection of an all-star tournament team.

C. Consolation Games:

In the Regional and Sectional tournaments, consolation games will not be permitted to determine third place winners.

D. State Final Passes:

For the State Final Tournament games, each Super-Sectional winner will receive:

1) a maximum of twenty-two (22) passes for its players and other team personnel

2) three (3) passes for administration: Superintendent, Principal and Athletic Director

3) twelve (12) passes for cheerleaders and if needed one (1) pass for a mascot in costume upon request by member school in advance of the State Finals.

4) one (1) pass for the cheerleader coach

5) one (1) State Final event pass to properly licensed medical personnel for each team participating in the State Final. The pass would be available for either a licensed athletic trainer or team physician. This individual must be listed on the school's State Final Program Information.

E. Bands:

Schools hosting an IHSA State Series Basketball Tournament may invite their high school pep band to perform during the tournament. However, it should be noted that the host school band is performing as the official band of the tournament and must remain neutral at all times. Failure to comply with this provision shall cause the band to be excluded from the remainder of the tournament.

Members of the pep band may be given free admission to the tournament. No band or performing groups other than the one from the host school shall be allowed to perform at the tournament.

F. Artificial Noisemakers:

All artificial noise-making devices shall be excluded from the gymnasium. The use of band instruments shall be limited as explained in "E" above. Refer to National Federation rules Book Rule 1, Section 18.

Tournament managers should not permit spectators to bring megaphones into the gymnasium for cheering purposes. Cheerleaders may use megaphones.

G. Signs and Banners:

The display of signs, banners, placards or similar items at IHSA state series events is permitted, provided:

1) they are in good taste and reflect good sportsmanship in their message and use;

2) they reflect identification and encouragement to participants and their school/community;

3) they are not displayed on the field of play or in a manner which interferes with play;

4) they do not obstruct the view of participants or spectators; and

5) they are not safety hazards.

H. Cheerleader/Mascot:

A maximum of twelve (12) cheerleaders and one (1) mascot in costume may be on the floor at any state series contest.

I. Damage to Property or Equipment:

If contestants or people from any school entered in a state series are found guilty of carelessness or maliciously breaking, damaging or destroying property or equipment belonging to the host school, such school shall be held responsible for costs incurred in replacing or repairing such property or equipment.

J. Practice Session:

1) In the Regional, Sectional and Super-Sectional Tournaments, the host school shall not make its gymnasium available to the visiting team for practice sessions. When a part of the state series is played at a facility other than a member school's facility, none of the teams entered, including a hosting member school shall be permitted to practice at the facility.

2) Schools competing at the State Final will be permitted one (1) thirty-minute (30) practice session at Redbird Arena as scheduled by the IHSA. During the Thursday shoot-around, only school-approved apparel will be permitted during practice. Tournament management reserves the right to determine the appropriateness of all practice, warm-up, and game uniforms.

3) In the Regional, Sectional, Super-Sectional and State Final Tournaments, fifteen (15) uninterrupted clock minutes shall be provided for pre-game warm-up. Players may not be on the floor for warm-up prior to the designated time. Floor officials must be on the floor when the pre-game warm-up period begins.

K. Media Requirements:

1) Provide Space:

Space shall be set aside to provide for news media representatives covering the state series whether they are from newspapers, radio stations, commercial television stations and/or cable television stations.

2) Radio and TV Originators:

It is the responsibility of the Local Manager to accept applications, approve requests to originate, collect proper rights fees payment (where required) and make cancellation refunds for television and/or radio play-by-play originations, according to the IHSA Television and/or IHSA Radio Broadcast Policy.

a) Television Rights Fees for all levels of competition below the State Final level shall be paid to the host school and shall become part of the revenue to be shared by the member school(s) and the Association accord-

ing to the financial terms stipulated in these Terms and Conditions.

b) Radio Broadcast Rights Fees are not required for any level of competition in this series (except State Final). Local Managers shall permit radio play-by-play originations of the competition.

c) Television and/or Radio Stations which do not apply in advance, or which do not pay required rights fees prior to the start of competition in each respective level in this state series, shall not be given credentials nor allowed access to the facility to originate. Sponsors of the originations for television and radio shall be only those so stipulated in the respective IHSA Television and Broadcast policies.

3) Administrative Detail:

Reporting information to the news media and/or the IHSA Office, as stipulated in instructions to Local Managers, shall be the responsibility of each Local Manager and is required.

L. Videotaping by Schools or Spectators:

Videotaping will be allowed provided the local manager has a comparable area for both competing schools to videotape. When one school requests the video space, then the local manager shall provide similar space to both competing schools. Non-competing schools and spectators will be allowed to videotape games in the stands, provided they do not obstruct the view of participants and spectators.

M. Tobacco/Liquid Nicotine Products:

The use of tobacco or liquid nicotine products in any competition area, either during a practice or while a contest is in progress, or affiliated property of any IHSA state series contest by any coach, player, any other person connected with a team, or fan shall be prohibited. State series hosts are required to make all state series contest sites and any affiliated property, including parking lots, fan accommodation areas, and other school or event venue property, tobacco/liquid nicotine free zones on the date or dates of any IHSA event being held at the site.

N. Use of Inhalers:

A student with asthma may possess and use his/her medication during an IHSA competition, while under the supervision of school personnel, provided the school meets the outlined procedures of self administration in the Illinois school code.

O. Alcoholic Beverages and IHSA State Series Events:

The possession, distribution, sale and/or consumption of alcoholic beverages are prohibited at the site and on any affiliated property of any IHSA state series contest. State series

hosts are required to make all state series contest sites and any affiliated property, including parking lots, fan accommodation areas, and other school or event venue property, alcohol free zones on the date or dates of any IHSA event being held at the site. Violation of this policy by an event host will subject the host to a penalty for violation of IHSA By-law 2.020. Such penalty may include but not necessarily be limited to prohibition against subsequent event hosting assignments. Violation of this policy by a non-hosting member school will subject the school to penalty for violation of IHSA By-law 2.020. Patrons of any IHSA state series contest determined to be in violation of this policy will be removed from the premise, and law enforcement officials will be called as warranted. No ticket refunds will be granted in such cases.

P. Prayer at IHSA State Series Contests:

Prayer at an IHSA state series contest that takes place over the public address system is prohibited.

Q. State Final Team Reimbursements:

1) In the State Final Tournament, the teams participating in the tournament shall be allowed transportation expenses at the rate of \$5.00 per mile per team for the first 50 miles, and \$3.00 per mile per team for each mile over 51 miles to and from the site where the tournament will be played. In addition, each school will receive a reimbursement to cover some the costs incurred by schools at the State Final. The IHSA will reserve a block of rooms for teams competing at the State Finals for their use if they so choose. Any expenses or costs associated or charged to the rooms will be at each schools expense.

Round Trip	Flat Rate
Mileage to State Final Site	Reimbursement
0-150 miles	\$ 2,500.00
151-300 miles	\$ 3,600.00
301-over miles	\$ 4,400.00

2) Neither the State Association nor the tournament management will assume responsibility for unusual or extraordinary expenses. Individual schools entering the tournaments must be ready themselves to assume responsibility for unusual expenses due to accident, inclement weather, fire, theft or any other extraordinary cause.

3) The tournament management does not guarantee any portion of team expenses except as specified in F-1 above. The payment of the above schedule of expenses is contingent upon adequate receipts in any individual tournament. Participating schools should be sure to take to the tournament adequate funds to meet all team expenses. Expense allowances cannot be paid to the schools until after they have been approved by the Executive Director.

X. AWARDS

A. Regional: A plaque will be awarded to the winner in each Regional.

B. Sectional: A plaque will be awarded to the winner in each Sectional.

C. Super-Sectional: A plaque will be awarded to the winner in each Super-Sectional.

D. State Final:

1. A trophy will be awarded to teams finishing first, second, third and fourth places in the State Final Tournament.

2. A maximum of twenty-two (22) medallions will be presented to the schools of the first four placing teams at the State Final Tournament. In addition, the superintendent, principal, the athletic director and a certified athletic trainer or team physician, provided one is listed on the schools State Final Program Information, will be presented with a medalion. No other trophies or awards of any kind may be presented in the tournament series. Only the twenty-two (22) team/school representatives, the superintendent, principal, the athletic director, and the athletic trainer may participate in the awards presentation.

XI. OFFICIALS

A. Appointment and Fees:

1) **Regional tournaments:** Three (3) officials will be appointed by the IHSA Office for each Regional game. In tournament sessions where two (2) games are scheduled, the IHSA Office may assign an official more than one (1) game per session. Each official will be paid a fee of \$67.50 per game.

2) **Sectional tournaments:** Three (3) officials will be appointed by the IHSA Office for each Sectional game. In tournament sessions where two (2) games are scheduled, the IHSA Office may assign an official more than one (1) game per session. Each official will be paid a fee of \$84.00 per game.

3) **Super-Sectional games:** Three (3) officials will be appointed by the IHSA Office for each Super-Sectional game. In tournament sessions where two (2) games are scheduled, the IHSA Office may assign an official more than one (1) game per session. Each official will be paid a fee of \$114.00 per game.

4) **State Final Tournament:** Twelve (12) officials will be appointed by the IHSA Office for the State Final games. Officials will be paid \$150.00 per game plus up to three nights lodging at a hotel designated by the IHSA Administrator. One (1) Head official will be appointed by the IHSA Office for the State Final games. The Head Official will be paid \$125.00 per day plus up to three nights lodging at a hotel designated by the IHSA Administrator.

B. Mileage Reimbursement Policy:

In the state series, to assist officials for out-of-pocket expenses, a voucher system will be used to compensate officials when they drive in excess of 70 miles round trip per contest. Payment will be made through the IHSA Office, after completion of the tournament series, at a rate of thirty cents (\$.30) per mile for all mileage in excess of 70 miles round trip. No compensation will be permitted for trips of less than 70 miles round trip.



2014-15 Girls COUNTRY Financial Three-Point Showdown Terms and Conditions

I. CONTESTANT CLASSIFICATION

Each participant will compete in the Class 1A, 2A, 3A or 4A competition correlated to the classification of the contestant's school in the state tournament series as stipulated in the Basketball State Tournament Series Terms and Conditions.

II. NAME, DATES AND SITES

A. Name:

1) The Three-Point Shooting Contest shall be named the **Country Financial Three-Point Showdown**.

B. Dates and Sites:

1) Qualifying rounds for the Three-Point Shooting Contest will be conducted prior to the Regional Championship and Sectional Championship games in the Girls state series.

2) The Class 1A and 2A Regional Championship shall be held February 12 or 13 and the Sectional Championship will be February 19.

3) The Class 3A and 4A Regional Championship shall be held February 19 or 20 and the Sectional Championship will be February 26.

C. COUNTRY Financial Three-Point Competition at Redbird Arena, Normal Class 1A and 2A

1) February 26 – Three-Point Shooting Preliminaries on Thursday at Redbird Arena at 5:00 p.m.

2) February 27 – Cl. 1A Three-Point Shooting Finals on Friday at Redbird Arena between the Semifinal Games at approximately 1:45 p.m.

3) February 27 – Cl. 2A Three-Point Shooting Finals on Friday at Redbird Arena between the Semifinal Games at approximately 8:00 p.m.

4) March 7 -- Queen of the Hill matching Class 1A, 2A, 3A and 4A winners on Saturday at Redbird Arena at 1:30 p.m. (approx.)

Class 3A and 4A

1) March 5– Three-Point Shooting Preliminaries on Thursday at Redbird Arena at 5:00 p.m.

2) March 6 – Cl. 3A Three-Point Shooting Finals on Friday at Redbird Arena between the Semifinal Games at approximately 1:45 p.m.

3) March 6 – Cl. 4A Three-Point Shooting Finals on Friday at Redbird Arena

between the Semifinal Games at approximately 8:00 p.m.

4) March 7 -- Queen of the Hill matching Class 1A, 2A, 3A and 4A winners on Saturday at Redbird Arena at 1:30 p.m. (approx.)

III. ELIGIBILITY AND ENTRIES

A. General Eligibility:

1) Only girls at IHSA member schools who have dressed for and occupied the team bench for a girls' varsity basketball contest are eligible to participate in the three-point shooting competition.

2) To enter the COUNTRY Financial Three-Point Shooting Competition, a girl must be eligible under all the eligibility rules and conditions of competition of the Illinois High School Association.

3) All players on all teams (including those participating in the current year's State Final Tournament) may compete in the Three-Point Shooting Contest.

B. Entries

1) Each team participating in the state tournament series (Class 1A, 2A, 3A and 4A) may select and enter up to four (4) shooters to participate in the shooting contest.

2) The names of the four (4) shooters must be submitted on the IHSA 3pt Entry Form to the Local Manager no later than 24 hours prior to the start of the shooting competition that begins at 5:30 p.m. on the Regional Championship night.

3) There shall be no substitutes or alternates in the Three-Point Shooting Contest.

IV. FINANCIAL ARRANGEMENTS

A. Regional/Sectional

1) Each participant will be responsible for her own expenses at the regional and sectional levels of the Three-Point Shooting Contest, except:

2) Access To Facility: Regional and Sectional tournament managers shall allow each shooter, on each night the shooter competes, the opportunity to be accompanied by up to four (4) persons to watch the shooter in the Three-Point competition. Each shooter's group will be admitted to the facility at no charge only for the time of the actual Three-Point competition. Once the competition is concluded, the shooter's group will be required to leave the facility.

a) Shooter's group will be admitted at the pass gate and seated in the

facility by game management. Once the competition is completed, the shooter's group will be escorted from the facility by game management. (Refer to the 3pt. supplement for suggested seating options).

B. State Final

Each participant will be responsible for her own expenses at Redbird Arena in Normal, except:

1) Each participant advancing to the State Final, shall be provided one (1) complimentary season ticket by IHSA to the respective 2015 Cl. 1A, 2A, 3A or 4A Girls State Final Basketball Tournament.

a) The four (4) qualifiers from the Thursday preliminaries for each of the Cl. 1A, 2A, 3A and 4A finals in the Three-Point Shooting Contest shall be provided with two (2) additional passes for access to Redbird Arena.

2) The four (4) qualifiers from the Thursday preliminaries for each of the Cl. 1A, 2A, 3A and 4A finals in the Three-Point Shooting Contest scheduled for Friday will have rooms for their respective state final provided by IHSA for Thursday. These rooms shall be issued only to an adult who is accompanying the qualifier, and who shall be responsible for the room, and who shall provide a major credit card when registering.

3) The Cl. 1A, 2A, 3A and 4A Queen of the Hill qualifier will have a room provided by IHSA for Friday of the Class 3A and 4A State Final. This room will be issued only to an adult who is accompanying the qualifier, and who shall be responsible for the room, and who shall provide a major credit card when registering.

V. CONTEST STRUCTURE AND TIME SCHEDULES

A. Each regional tournament host school and each sectional tournament host school is required to conduct the Three-Point Shooting Contest according to these Terms and Conditions.

B. Competition in the Three-Point Shooting Contest will be conducted at 5:30 p.m. on the night of the Regional Championship.

C. Competition in the Three-Point Shooting Contest will be conducted at 5:30 p.m. on the night of the Regional Championship and at 5:30 p.m. on the night of the Sectional Championship correlated tourna-

ment in the respective (Cl.1A, 2A, 3A and 4A) girls' state tournament series.

D. Regional & Sectional Championship Time Schedule

5:30 p.m.- All contestants draw numbers for their shooting order and group.

Ex. 7 teams in a regional each entering 4 shooters=28 total shooters.

Each shooter will draw a number out of hat 1-28. Shooters will be placed in groups of 8, the last group of shooters will not be a full group of 8. (Ex. Group #1-Shooters 1-8, Group #2-Shooters 9-16, Group #3 Shooters 17-24, Group #4 25-28).

5:35p.m. — Begin 3 minute warm-up for Group #1 Three-Point Shooters scheduled to compete on scoreboard clock. After 3 minutes when clock reaches 0:00, horn sounds, warm-up concludes.

5:38-5:46 p.m. (Approx.)—Three-Point Shooting Competition Group #1. All shooters will shoot at the same basket. (Shooters 1, 2, 3, 4, 5, 6, 7, 8).

5:47-5:50 p.m. (Approx.)—Begin 3 minute warm-up for Group #2 Three-Point Shooters scheduled to compete on the scoreboard clock. After 3 minutes when clock reaches 0:00, horn sounds, warm-up concludes.

5:51-5:59 p.m. (Approx.)—Three-Point Shooting Competition Group #2. All shooters will shoot at the same basket. (Shooters 9, 10, 11, 12, 13, 14, 15, 16).

6:00-6:03 p.m. (Approx.)—Begin 3 minute warm-up for Group #3 Three-Point Shooters scheduled to compete on the scoreboard clock. After 3 minutes when clock reaches 0:00, horn sounds, warm-up concludes

6:04-6:12 p.m. (Approx.)—Three-Point Shooting Competition Group #3. All shooters will shoot at the same basket. (Shooters 17, 18, 19, 20, 21, 22, 23, 24).

6:13-6:16 p.m. (Approx.)—Begin 3 minute warm-up from Group #4 Three-Point Shooters scheduled to compete on scoreboard clock. After 3 minutes when clock reaches 0:00, horn sounds, warm-up concludes.

6:17-6:21 p.m. (Approx.)— Three-Point Shooting Competition Group #4. All shooters will shoot at the same basket. (Shooters 25, 26, 27, 28). The top 4 overall shooters from the Regional Championship will advance to the correlated Sectional site regardless of what Group each shooter was in. The top 4 overall shooters from the Sectional Championship will advance to the State Final prelims.

6:25-6:35 p.m. (Approx.) – Three-Point Shooting awards and announcements.

6:35-6:40 p.m. (Approx.) — 5 minute break for coaches of shooters and competing teams to meet in dressing room for pre-game instructions.

6:40-6:55 p.m.(Approx.) — Start 15 minute pre-game warm up

6:57-7:00 p.m. (Approx.) — At conclusion of National Anthem, introduction of players and coaches.

7:00 p.m. (Approx.) — Game Tip-off.

VI. ADVANCEMENT OF WINNERS

A. Class 1A, 2A, 3A and 4A: Regionals

1) All regional level competition shall be at the site of the host school of the Regional Tournament.

2) All shooters from a Regional site will enter the Three-Point Shooting Competition for the first time the night of the Regional Championship game, regardless if their team advances to the Regional Championship.

3) Shooting shall be conducted prior to the Regional Championship and advancement of the top four shooters from the Regional will advance to the correlated Sectional site and will shoot at 5:30 p.m. prior to the Sectional Championship.

Sectionals

1) The sectional level competition shall be at the site of the host school of the Sectional Tournament.

2) Shooting shall be conducted prior to the Sectional Championship at 5:30 p.m. and advancement of the top (4) overall shooters will advance to the Three-Point Shooting Preliminaries at the State Final.

VII. CONTEST RULES

A. Three-Point Shooting:

1) Each team entered in the Girls state tournament series may select and enter up to four (4) shooters. Only those shooters selected to compete in the competition the first time at the school Regional Site in the Girls state tournament series shall be eligible to compete and advance in the Three-Point Shooting Competition. Shooters will compete individually in the Three-Point Shooting Competition and their participation in the competition is independent from the advancement of the shooter's team in the Girls state tournament series. There shall be no alternates.

2) The scoreboard and scoreboard clock shall be used as each shooter competes. The clock shall be set at 45 seconds and run down, while shots made shall be recorded.

3) All shooters will shoot at the same basket in each round. The local manager shall determine the basket to be used.

4) Begin each shooter's timing with the scoreboard horn and end each shooter's timing with the scoreboard horn.

5) Shooting Order:

a) Regionals: There shall be a blind draw for shooting order conducted immediately at 5:30 p.m. prior to the Regional Championship Game. Any competitor(s) who is/are not in attendance for the draw will have a shooting number drawn for them by the contest manager. If a competitor(s) is/are not in attendance or ready to shoot when his/her turn is up, the competitor will be disqualified. Any competitor(s) who fail to show up on the night of the Regional Championship will not be allowed an alternative day or time to qualify. Competitors who show up late will not be given any additional warm-up time.

b) Sectionals: There shall be a blind draw for shooting order conducted immediately at 5:30 p.m. prior to the start of the Sectional Championship. Any competitor(s) who is/are not in attendance for the draw will have a shooting number drawn for them by the contest manager. If a competitor(s) is/are not in attendance or ready to shoot when his/her turn is up, the competitor will be disqualified. Any competitor(s) who fail to show up on the night of the Sectional Championship will not be allowed an alternative day or time to qualify. Competitors who show up late will not be given any additional warm-up time.

c) State Final: The IHSA shall blind draw the shooting order for the Thursday preliminaries once all the entries have been received. The order will be announced prior to the date of the preliminaries. Shooting order for each round after the preliminaries shall be in reverse (fewest made to most made) order of qualifying score.

6) A warm-up period of three (3) minutes will be provided before the start of each round competition and one (1) minute warm-up period before each tiebreaker at the regional and sectional. By mutual agreement of the shooters competing in a tiebreaker, the warm-up period may be shortened or eliminated.

7) Each shooter will shoot one round consisting of three racks of five (5) balls (a total of 15 balls).

8) Beginning with Rack 1, shooters will compete in a round and rotate through the 3 racks as follows:

Rack 1 = right side of free throw line extended

Rack 2 = top of circle

Rack 3 = left side of free throw line extended

a) Wherein possible, three different ball racks should be used. If three ball racks are not available, there should be at least two ball racks, with the ball rack used for position No. 1 moved to position No. 3 immediately after the shooter completes use of ball rack No. 1.

b) It is the responsibility of the shooter to lift each ball from each rack. If the shooter requests, or if the ball rack being used cannot hold five balls, the first ball in a rack may be given to the shooter by a bench official.

9) Each made basket is worth one (1) point in the round.

10) There will be a time limit of forty-five (45) seconds per shooter each regular round. There will be a time limit of thirty (30) seconds per shooter each tiebreaker round. In the event a ball becomes lodged in the basket support during a contestant's shooting round, the clock shall be stopped, the ball removed, and then the clock will be restarted, allowing the shooter to complete his/her round.

11) Shooters with most points advance to next level of competition. Shooters who advance in Regional competition will shoot on night of Sectional Championship regardless of the shooter's team advancement in the Girls basketball tournament series.

12) In the event two (2) or more shooters tie in points for the last advancing position(s), the tie will be broken with additional round(s). Ball will be shot from spot(s) in sequence as is outlined below.

13) Tiebreaker: This procedure will be used only to break a tie for advancement. (For example, if four shooters make 12 shots and the four others make 10, there will be no tiebreaker. If one shooter makes 12, another shooter 11, and three or more make the next equal amount, the tiebreaker shall be used to

determine the two (remaining) advancing shooters. If the tie is not broken, shooters will repeat the tiebreaker procedure until the tie is broken. Each shooter will shoot two racks of five (5) balls (a total of 10 balls) on the following basis:

Rack 4 = right corner

Rack 5 = left corner

B. Uniforms:

1) All participants shall wear their official school team uniform, which shall be uniform jersey and uniform shorts. Uniform color shall be at the discretion of the participant.

2) Shooters who appear at the competition not in school uniform shall be disqualified from the shooting contest.

C. Balls:

The Wilson Evolution WTB0586 basketball shall be used in the Three-Point Shooting Competition at the State Final.

VIII. CONTEST POLICIES

A. All IHSA Girls Basketball Tournament Series policies will be enforced during both contests.

IX. CONTEST AWARDS

A. Queen of the Hill Champion: Award will be presented to winner of the overall competition between the respective Class 1A, 2A, 3A and 4A winners.

B. Winners of the competition between the respective Class 1A, 2A, 3A and 4A Three-Point Shooting Contest will receive an award and advance to the Queen of the Hill Competition.

C. Class 1A, 2A, 3A and 4A: Awards will be presented to the three finalists who do not advance to the Queen of the Hill competition.

D. Awards at the regional and sectional level may be presented if secured by the local manager and/or in conjunction with the local Country Financial agent.

X. OFFICIALS

A. Each host school will be responsible for appointing bench officials to officiate/administer the shooting. It is recommended that none of these be one of the game officials.

B. Three-Point Judges at the State Finals shall be appointed by IHSA in conjunction with the Illinois Coaches Association (ICA) and the Illinois Basketball Coaches Association (IBCA).

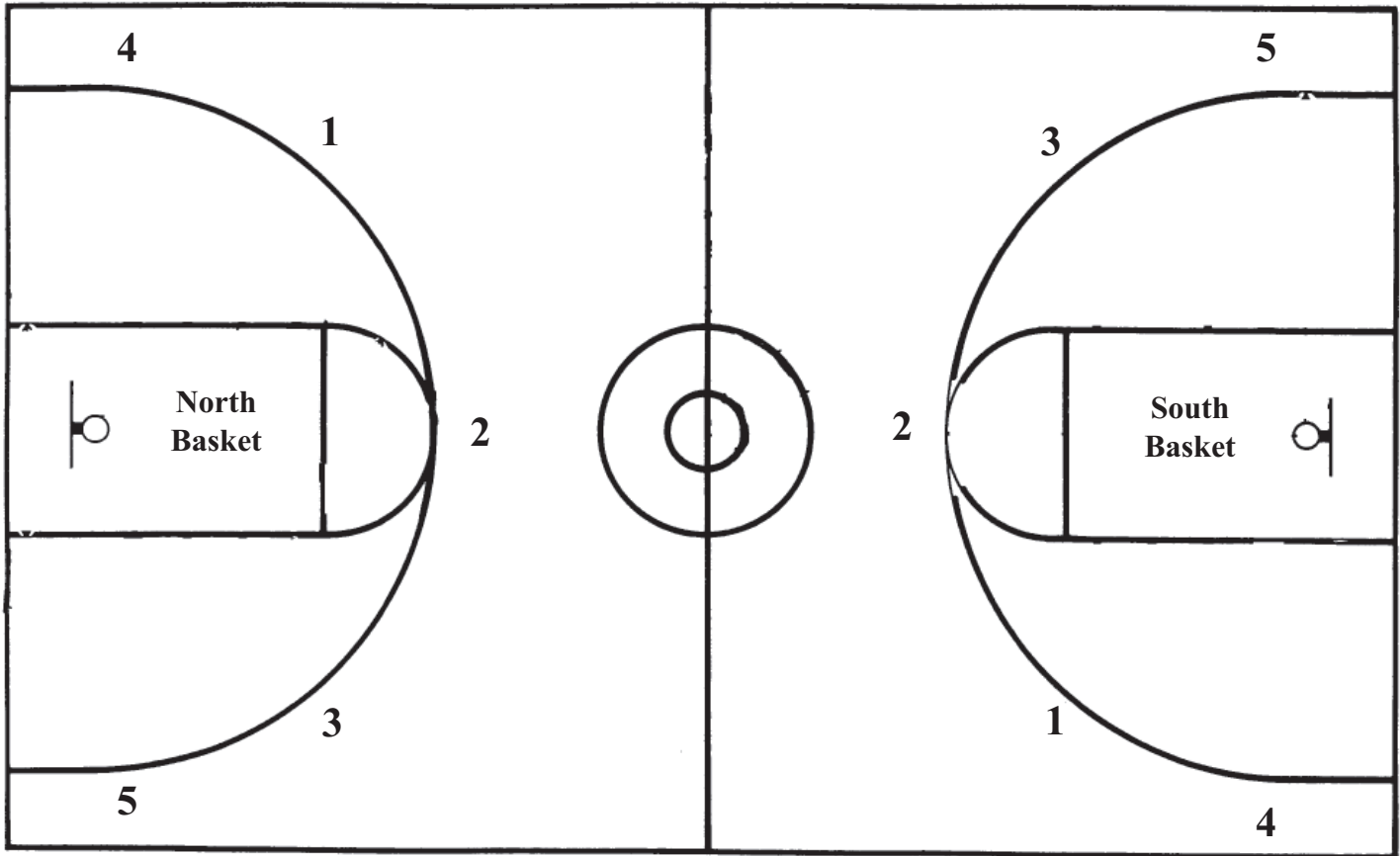
Three-Point Shooting Positions

Prelims

1A & 3A — north basket
2A & 4A — south basket

Class Finals

1A & 3A — south basket
2A & 4A — north basket
King of the Hill — south basket



Racks 1, 2, 3 will be the positions used for each rack in preliminary and final round competition.

Racks 4 and 5 will only be used in case of a tie breaker.



Girls Basketball Information



ILLINOIS HIGH SCHOOL ASSOCIATION

2715 McGraw Drive • Bloomington, IL 61704

• www.ihsa.org • Phone: 309-663-6377 • Fax: 309-663-7479 •

To the Principal/IHSA Official Representative of Schools Entered in the
2014-15 IHSA Girls Class 1A, 2A, 3A and 4A State Basketball Tournament Series:

This manual has been designed to include pertinent information related to this year's Girl's Basketball State Series.
Please pay special attention to the downloadable forms.

SEEDING: Schools entered into the Class 1A, 2A, 3A and 4A state series will be required to submit a *Season Summary Sheet* on-line in the IHSA Schools Center. Failure to do so by the designated date and time will result in a school forfeiting its opportunity to participate in the seeding process. The *Season Summary Form* can be found in the IHSA Schools Center. Each school who completes the *Season Summary Form* by the established deadline shall have one (1) vote in the seeding process. No school shall vote for their own team. Seeding will occur at the Regional or Sectional complex level, depending on each school's first level tournament assignment. Neither the Super-Sectional nor the State Final shall be seeded. Once the seeds have been finalized, the IHSA will post those online. Managers and coaches are prohibited from releasing the results of their seeding to media.

TERMS AND CONDITIONS: For a full statement of the specific terms under which your school will be participating, PLEASE CAREFULLY READ the [Terms and Conditions](#) located on the IHSA Girls Basketball web page or in this Manual.

OFFICIALS ASSIGNMENTS: Assignment of game officials shall be made by the IHSA based on the IHSA officials rating system. A school's entry into the tournament series indicates agreement of assigned officials as provided for in IHSA By-law 2.080. Schools will not rate officials at the seeding meeting.

Sincerely,

Beth A. Sauser
Assistant Executive Director

IMPORTANT DEADLINES AND STATE SERIES DATES

CLASS 1A and 2A

Jan. 28 (Wed.)	Schools Must Complete and Submit the <i>Season Summary Form</i> On-Line in the IHSA Schools Center by <u>10:00 a.m.</u>
Jan. 28 (Wed.)	View and/or Print Season Summary Forms
Jan. 28 (Wed.)	Submit Seeds On-Line in IHSA Schools Center by <u>12:00 Noon on Thurs. Jan. 29</u>
Jan. 29 (Thurs.)	Class 1A & 2A Seeding Results Released On-Line
Jan. 30 (Fri.)	Class 1A & 2A Pairings Released by 4:00 p.m.
Feb. 9-13	Regional Tournament
Feb. 16-19	Sectional Tournament
Feb. 21 (Sat.)	State Qualifier Data Forms Due On-Line and Program Pictures Uploaded in your School Center (<i>See Instructions in Manual</i>)
Feb. 21 (Sat.)	Three-Point Shooting Qualifiers Information Form and Photo Emailed to IHSA Office
Feb. 23 (Mon.)	Super-Sectional
Feb. 24	Up-To-Date Statistics Due to IHSA Office by <u>10:00 a.m.</u>
Feb. 26 (Thurs.)	COUNTRY Financial Three-Point Shooting Preliminaries
Feb. 27 (Fri.)	State Final (Semifinal Games)
Feb. 27 (Fri.)	COUNTRY Financial Three-Point Shooting Finals
Feb. 28 (Sat.)	State Final (Consolation & Title Games)

CLASS 3A and 4A

Feb. 4 (Wed.)	Schools Must Complete and Submit the <i>Season Summary Form</i> On-Line in the IHSA Schools Center by <u>10:00 a.m.</u>
Feb. 4 (Wed.)	View and/or Print Season Summary Forms
Feb. 4 (Wed.)	Submit Seeds On-Line in IHSA Schools Center by <u>12:00 Noon on Thurs. Feb. 6</u>
Feb. 5 (Thurs.)	Class 1A & 2A Seeding Results Released On-Line
Feb. 16-20	Regional Tournament
Feb. 23-26	Sectional Tournament
Feb. 28 (Sat.)	State Qualifier Data Forms Due On-Line and Program Pictures Uploaded in your School Center (<i>See Instructions in Manual</i>)
Feb. 28 (Sat.)	Three-Point Shooting Qualifiers Information Form and Photo Emailed to IHSA Office
March 2 (Mon.)	Super-Sectional
March 3	Up-To-Date Statistics Due to IHSA Office by <u>10:00 a.m.</u>
March 5 (Thurs.)	COUNTRY Financial Three-Point Shooting Preliminaries
March 6 (Fri.)	State Final (Semifinal Games)
March 6 (Fri.)	COUNTRY Financial Three-Point Shooting Finals
March 7 (Sat.)	State Final (Consolation and Title Games)
March 7 (Sat.)	COUNTRY Financial Three-Point Shooting Queen of the Hill

SCHOOL'S RESPONSIBILITY TO AN OFFICIAL PRIOR TO THE SEASON

1. Send a reminder card or email to the officials after you have them scheduled.
2. Reminder should include date of contest, time, level, location and sport.

Even though many schools and conferences have assignment chairpersons, sending a reminder is highly recommended. When an official does not show, people in your community won't know who the assignment chairperson is, but they do know the athletic director. **Avoid embarrassment.**

3. Have a standard wage scale set for your different sports and levels and a method in place to raise the pay periodically.
4. If possible, let the working officials know who their partner(s) will be.
5. Hire police and security along with medical assistant or athletic trainer coverage for events whenever possible.
6. Set a policy with your school board on fan, coach and player behavior.
7. Make sure all officials have a contract that is signed by your school—preferably by the principal or IHSA Official Representative.

SCHOOL'S RESPONSIBILITY TO AN OFFICIAL PRIOR TO THE CONTEST

1. Prior to the contest, provide the officials with directions and inform them of any special activities that might be occurring (i.e., Homecoming, Senior Night, etc.)
2. Give the official a number they can call in case of an emergency or postponement due to weather.
3. Have competent workers assigned at all contests (scorers, announcers, chain crew, etc.). These people are of great assistance to the official during the contest.
4. Have a host assigned to meet the officials as they arrive. The host should do the following for the officials:
 - A) Provide a reserved parking space.
 - B) Meet officials and take them to the dressing room.
 - C) Have refreshments available for halftime and postgame.
 - D) Ask for any additional needs.
 - E) Introduce the officials to those game workers pertinent to the contest (i.e., scorer, announcer, chain gang, etc.).
 - F) Get the proper pronunciation of officials' names so they are correct when given by the public address announcer.
5. Athletic director should discuss with the officials any special events, conference rules, national anthem time, etc. that would affect the game.
6. Provide the officials with the name of the adult supervisor for that contest and where that person can be found in the event a challenging situation should occur.
7. Make officials aware of location of an athletic trainer or other first responders during the contest. Have a doctor on site when possible (especially at football contests).
8. Make sure all bench personnel are properly attired.
9. Do a check on game scoreboards and lighting systems prior to the game or contest.
10. Make sure the playing area is properly marked and meets National Federation guidelines for that contest.
11. Provide appropriate secured dressing area and hot water showering facilities.



SCHOOL'S RESPONSIBILITY TO AN OFFICIAL DURING THE CONTEST

1. Insist coaches display good sportsmanship and are proper examples for your players and crowd.
2. Have your public address announcer or cheerleader read the IHSA sportsmanship statement and remain unbiased during contest.
3. Make sure the event supervisor understands the duties and responsibilities pertinent to that contest.
4. Make sure the playing area is maintained during halftime of each contest. For wrestling, make sure the mat is properly cleaned and washed.
5. Help with adverse weather conditions; monitor accordingly.
6. Make sure proper crowd control is visible and in place. Good administrative control can prevent difficult situations.
7. Observe the crowd during the contest and prevent any disturbances that may occur.
8. Work with the official during the game regarding crowd control.
9. Retrieve the game ball at the end of the contest.
10. Escort the officials back to the dressing room at halftime and at the conclusion of the contest.

SCHOOL'S RESPONSIBILITY TO AN OFFICIAL AFTER THE CONTEST

1. Escort the officials safely back to the dressing room and parking lot.
2. Do not allow unauthorized persons in the dressing room after the game. This includes coaches.
3. Have refreshments available for the officials after the contest.
4. Be sure to thank the officials for their time and effort, regardless of the outcome of the game.
5. Make sure arrangements for paying the officials have been completed. It is preferable to pay the official the day of contest.
6. Ensure that officials are not confronted by anyone after the contest.



Do What's Right!

Sportsmanship

DWR! EXPECTATIONS

- ❖ *Represents their school and community well with positive interaction with opposing fans and players.*
- ❖ *Uses positive yells, chants, songs or gestures.*
- ❖ *Display modesty in victory and graciousness in defeat*
- ❖ *Respect and acknowledge the integrity/judgment of officials.*
- ❖ *Exhibit positive behavior with opponents and fans before, during and after the contest.*

Acceptable Behavior...

- During the National Anthem, students, participants and fans should remove any hats, face the flag, not talk, place the right hand on the heart, and remain still until the end of the anthem.
- Applause during introduction of players, coaches and officials.
- Players shaking hands with opponents while both sets of fans recognize player's performance with applause.
- Accept all decisions of the game officials.
- Spirit Participants lead fans in positive support.
- Handshakes between participants and coaches at the end of contests, regardless of the outcome.
- Treat competition as a game, not a war.
- Coaches/players search out opposing participants to recognize them for outstanding performance or coaching.
- Applause at the end of the contest for performance of all participants.
- Everyone showing concern for an injured player, regardless of the team.
- Encourage surrounding people to display sportsmanlike conduct.

Unacceptable Behavior...

- Disrespectful or derogatory yells, chants, songs or gestures.
- Booing or heckling an official's decision.
- Criticizing officials in any way; displays of temper with an official's call.
- Yells that antagonize opponents.
- Refusing to shake hands or give recognition for good performances.
- Blaming the loss of the game on officials, coaches or participants.
- Laughing or name calling to distract an opponent.
- Use of profanity or displays of anger that draw attention away from the game.
- Doing own yells instead of following the lead of spirit participants.





IHSA Basketball Rules Adopted for 2014-15

1. The Mercy Rule can only be used in regular season tournaments that wish to utilize it. *Regular season contests may not use the Mercy Rule under any circumstances.* For those tournaments that wish to use the Mercy Rule, tournament managers are asked to notify the participating schools and officials of their intention to use the Mercy Rule in advance of the tournament.

Tournaments shall use the following adoption for rule 5-5-3 **NOTE:**

A running clock shall be used in the fourth quarter games that have at least a 30 point differential score. Once a game reaches this differential and the clock starts running, it will continue running and stop only for one of the following:

- A team timeout
- An injury timeout or the removal of a disqualified player.
- The administration of a penalty for a technical foul
- An officials' timeout
- Correctable error situation

Please note this adoption applies only to regular season tournaments. It will not be used during the boys' or girls' state series.

2. The IHSA has adopted the use of a 14' coaches box for all regular and post season contests. Schools and officials are reminded that the use of the box is NOT a requirement. However, if the box is going to be used, it must be placed on the floor in accordance with rule 1-13-2. Schools and officials are also reminded that rule 10-4-4 and 10-5 clearly articulate the manner in which coaches can be off the bench within the confines of the box and the manner in which officials are to penalize the head coach or other bench personnel who violate the provisions of the coaches box rule.

Concussion Information

Mandatory Concussion Course for Coaches

House Bill 5431 will go into effect for the 2014-15 school year. The legislation requires ALL high school coaches and athletic directors to receive a certificate of completion every two years for an online concussion awareness and education program developed by the IHSA.

The program includes a presentation and other supplementary materials that ALL high school coaches and athletic directors need to review prior to taking a required exam over the curriculum. Individuals will be required to demonstrate proficiency on the exam by scoring at least 80% in order to serve as an athletic coach at an IHSA member school. The legislation also requires student-athletes to watch the video presentation portion of the over-all curriculum each year.

The program includes information on concussion awareness training, concussion recognition, best practices for avoiding concussions, return to play guidelines, and sub-concussive head trauma. Coaches will be able to access the program after logging into the IHSA Schools Center and clicking on the "CON" tab, which will be located under the 'Departments' heading on the Schools Center homepage.

Return to Play (RTP) Policy

Background: With the start of the 2010-11 school term, the National Federation of State High School Associations (NFHS) implemented a new national playing rule regarding potential head injuries. The rule requires "any player who exhibits signs, symptoms, or behaviors consistent with a concussion (such as loss of consciousness, headache, dizziness, confusion, or balance problems) shall be immediately removed from the game and shall not return to play until cleared by an appropriate health care professional." In applying that rule in Illinois, it has been determined that only certified athletic trainers and physicians licensed to practice medicine in all its branches in Illinois can clear an athlete to return to play the day of a contest in which the athlete has been removed from the contest for a possible head injury.

Policy: In cases when an athlete is not cleared to return to play the same day as he/she is removed from a contest following a possible head injury (i.e., concussion), the athlete shall not return to play or practice until the athlete is evaluated by and receives written clearance from a licensed health care provider to return to play.

For the purposes of this policy, licensed health care providers consist of physicians licensed to practice medicine in all its branches in Illinois and certified athletic trainers working in conjunction with physicians licensed to practice medicine in all its branches in Illinois.

ILLINOIS HIGH SCHOOL ASSOCIATION

2715 McGraw Drive • Bloomington, IL 61704

• www.ihsa.org • Phone: 309-663-6377 • Fax: 309-663-7479 •

IHSA Protocol for Implementation of NFHS Sports Playing Rule for Concussions

“Any athlete who exhibits signs, symptoms, or behaviors consistent with a concussion (such as loss of consciousness, headache, dizziness, confusion, or balance problems) shall be immediately removed from the contest and shall not return to play until cleared by an appropriate health care professional.”

The above language, which first appeared in all National Federation sports rule books for the 2010-11 school term, reflects a strengthening of rules regarding the safety of athletes suspected of having a concussion, but not a revision in primary responsibilities in these areas. Previous rules required officials to remove any athlete from play who was “unconscious or apparently unconscious.” This revised language reflects an increasing focus on safety, given that the vast majority of concussions do not involve a loss of consciousness. However, the revised language does not create a duty that officials are expected to perform a medical diagnosis. The change in rule simply calls for officials to be cognizant of athletes who display signs, symptoms, or behaviors of a concussion from the lists below and remove them from play.

NOTE: The persons who should be alert for such signs, symptoms, or behaviors consistent with a concussion in an athlete include appropriate health-care professionals, coaches, officials, parents, teammates, and, if conscious, the athlete him/herself.

Definition of a Concussion

A concussion is a traumatic brain injury that interferes with normal brain function. An athlete does not have to lose consciousness (be “knocked out”) to have suffered a concussion.

Behavior or signs observed indicative of a possible concussion

- Loss of consciousness
- Appears dazed or stunned
- Appears confused
- Forgets plays
- Unsure of game, score, or opponent
- Moves clumsily
- Answers questions slowly
- Shows behavior or personality changes
- Can't recall events prior to or after the injury

Symptoms reported by a player indicative of a possible concussion

- Headache
- Nausea
- Balance problems or dizziness
- Double or fuzzy vision
- Sensitivity to light or noise
- Feeling sluggish
- Feeling foggy or groggy
- Concentration or memory problems
- Confusion

This protocol is intended to provide the mechanics to follow during the course of contests/matches/events when an athlete sustains an apparent concussion. For the purposes of this policy, appropriate health care professionals are defined as: physicians licensed to practice medicine in all its branches in Illinois and certified athletic trainers.

1. During the pre-game conference of coaches and officials, the official shall remind the head coaches that a school-approved appropriate health care professional will need to clear for return to play any athlete removed from a contest for an apparent head injury.
2. The officials will have no role in determining concussion other than the obvious situation where a player is unconscious or apparently unconscious as is provided for under the previous rule. Officials will merely point out to a coach that a player is apparently injured and advise the coach that the player should be examined by the school-approved health care provider.
3. If it is confirmed by the school's approved health care professional that the student did not sustain a concussion, the head coach may so advise the officials during an appropriate stoppage of play and the athlete may re-enter competition pursuant to the contest rules.
4. Otherwise, if an athlete can not be cleared to return to play by a school-approved health care professional as defined in this protocol, that athlete may not be returned to competition that day and is then subject to the IHSA's Return to Play (RTP) Policy before the student-athlete can return to practice or competition.
5. Following the contest, a Special Report shall be filed by the contest official(s) with the IHSA Office through the Officials Center.
6. In cases where an assigned IHSA state finals event medical professional is present, his/her decision to not allow an athlete to return to competition may not be over-ruled.

Additional information regarding concussion has been made available to IHSA member schools and licensed officials and can be accessed on the IHSA Sports Medicine website at <http://www.ihsa.org/Resources/SportsMedicine.aspx>.



****IMPORTANT****

SEASON SUMMARY FORM INSTRUCTIONS

Schools entered into the Class 1A, 2A, 3A, and 4A state series will be required to submit a *Season Summary Form* on-line in the IHSA Schools Center. Failure to do so by the designated date and time will result in a school forfeiting its opportunity to participate in the seeding process. **The *Season Summary Form* can be found in the IHSA Schools Center.**

Girls Class 1A & 2A Seeding Deadlines

Starting	Ending	Phase	Description
	DEADLINE: Wed., Jan. 28 10 am sharp	Submit Season Summary Form	To be eligible to seed the teams in your regional tournament, <u>you must fill out the Season Summary Form</u> with your team's won-lost record and game-by-game scores prior to the deadline. You may also submit a comment about your team giving information that might not be obvious from looking at the scores. Providing complete, accurate information is the key to getting a fair seed.
Wed., Jan. 28 11 am	DEADLINE: Thu., Jan. 29 noon sharp	View and/or print Season Summary Forms	Before submitting your seeds, you may review all the Season Summary Forms submitted by coaches in your regional. Take some time to familiarize yourself with the other teams and be sure to read the comments posted by other coaches.
		Submit seeds	After you have reviewed all the available information, you may submit your seeds. Be sure to seed every team in your regional.
Thu., Jan. 29 2 pm	—	View all seeds	After the deadline for seeding has passed, you can review the seeds submitted by every coach in your regional. These seeds will be compiled by the IHSA Office and a single seed number will be determined for each team.
Thu., Jan. 29 4 pm	—	View official seeds	Once the IHSA Office has reviewed all the seeds, they will be posted on IHSA.org.
Fri., Jan. 30 4 pm	—	View pairings	Once the IHSA Office has completed the pairings, they will be posted on IHSA.org.
Sat., Jan. 31	—	Submit Team Data Form	Once the seeding process is complete, you can begin work on the Team Data Form, which incorporates information already submitted on the Season Summary Form. The link for this form will be in Sport & Activity Tracker.

Girls Class 3A & 4A Seeding Deadlines

Starting	Ending	Phase	Description
	DEADLINE: Wed., Feb. 4 10 am sharp	Submit Season Summary Form	To be eligible to seed the teams in your regional tournament, <u>you must fill out the Season Summary Form</u> with your team's won-lost record and game-by-game scores prior to the deadline. You may also submit a comment about your team giving information that might not be obvious from looking at the scores. Providing complete, accurate information is the key to getting a fair seed.
Wed., Feb. 4 11 am	DEADLINE: Thu., Feb. 5 noon sharp	View and/or print Season Summary Forms	Before submitting your seeds, you may review all the Season Summary Forms submitted by coaches in your regional. Take some time to familiarize yourself with the other teams and be sure to read the comments posted by other coaches.
		Submit seeds	After you have reviewed all the available information, you may submit your seeds. Be sure to seed every team in your regional.
Thu., Feb. 5 2 pm	—	View all seeds	After the deadline for seeding has passed, you can review the seeds submitted by every coach in your regional. These seeds will be compiled by the IHSA Office and a single seed number will be determined for each team.
Thu., Feb. 5 4 pm	—	View official seeds	Once the IHSA Office has reviewed all the seeds, they will be posted on IHSA.org.
Fri., Feb. 6 4 pm	—	View pairings	Once the IHSA Office has completed the pairings, they will be posted on IHSA.org.
Sat., Feb. 7	—	Submit Team Data Form	Once the seeding process is complete, you can begin work on the Team Data Form, which incorporates information already submitted on the Season Summary Form. The link for this form will be in Sport & Activity Tracker.



Schools are Required to Submit State Final Program Information Online

Dear Coach or Athletic Director:

As your team gets close to qualifying for the State Final tournament, you will be required to complete the **State Qualifier Data** form online. This form provides the IHSA with most of the information printed in the State Final souvenir program. You are required to provide this information once you have qualified for the Girls Basketball Super-Sectional tournament.

The link to the State Qualifier Data form is located in the IHSA Schools Center.

To log in to the Schools Center:

- Go to www.ihsa.org and click on the Schools & Officials Center Login link.
- Log in with your personal ID and password
- On the main menu, click on Box T: "Sport & Activity Tracker"
- Find Girls Basketball and follow the row across until you find a link labeled "[State Qualifier Data Form](#)" in the column labeled "Online Forms". Click on the link and follow the instructions to fill out the required pages.

The information you will provide online includes coaching staff, coaching history, season scores (including high scorers & high rebounders), and roster. **Up-to-date statistics must be submitted on the printed forms included in this manual and faxed/emailed to the IHSA office immediately after the Super-Sectional contest.**

You will also need to upload your photos while signed into the Schools Center. Instructions are provided on the following page.

Class 1A and 2A due February 21

Class 3A and 4A due February 28

INSTRUCTIONS FOR SUBMITTING PHOTOS

Submit your photos by uploading them in the Schools Center.

1. Sign into the Schools Center. Choose: [Upload state tournament program photos here](#) on Main Menu

The screenshot shows the Schools Center interface. On the left, there are 'Departments' and 'Quick Links' sections. A red arrow points to the 'Upload state tournament program photos (old interface)' link in the Quick Links section. On the right, there is a 'Message Center' with a message titled '10/23 IHSA Webinar on Residence & Transfer - Oct. 30 at 1 pm'.

2. Add administrators and coaches. Choose: [Add a new administrator or coach](#). Do this step before adding team photos. Follow the step-by-step instructions, making sure that you **SAVE** the photos and information. Do not use all capital letters.

The screenshot shows the 'State Program Photo Collection' interface. It has two main sections: 'Staff Photos' and 'Team Photos'. Below these is a table with columns for Activity, Team Photo, Outlines, Assigned Staffers, and Upload Photo. A red circle highlights the 'Add a new administrator or coach' link, and another red circle highlights the 'Edit' button in the 'Upload Photo' column for 'Boys Basketball'.

Activity	Team Photo	Outlines	Assigned Staffers	Upload Photo Edit Outlines Assign Staff
Boys Baseball	None	None		Edit
Boys Basketball	None	None		Edit
Girls Basketball	None	None		Edit
Bass Fishing	None	None		Edit
Competitive Cheerleading	None	N/A		Edit
Boys Football	None	None		Edit
Girls Softball	None	None		Edit
Scholastic Bowl	None	None		Edit
Boys Soccer	None	None		Edit
Girls Volleyball	None	None		Edit

3. Upload your team photo. Choose: The [Edit](#) button that corresponds with your sport.

- a. Following the instructions upload your team photo. **SAVE** changes.
- b. Assign staff members. Use the pull down menus to assign staff members to be included in this program. **SAVE** changes to staff assignments.
- c. Add your outline. List the individuals (first and last name) in each row. Do not use all capital letters. Do not include numbers, year in school, etc. Please use the following to designate supervisors in the photo: Head Coach John Smith, Asst. Coach Billy Bob, Mgr. Jane Doe. **SAVE** changes to cutline.

4. Go back to School Photos Menu. Check to make sure you have included all photos and cutline for this sport. If everything is correct, you can exit the Schools Center. Make sure that you have completed all other State Final information for the program.

If you have any questions, please call **LeAnna Mutchler** – 309-663-6377 or email lmutchler@ihsa.org

Photos are due by midnight Saturday, Feb. 21, 2015 for 1A and 2A and Saturday, Feb. 28, 2015 for 3A and 4A.

ScoreZone Reporting Procedures for 2014-15

Managers: Please read the following page carefully. If you have any questions, please call Scott Johnson at the IHSA Office (309-663-6377).

How to Submit ScoreZone Final Scores

1. Log on to the IHSA Schools Center using your Login ID and password (www.ihsa.org).
2. Look for the "IHSA State Series Hosting & ScoreZone" icon. Click on the "ScoreZone" link. You will be shown a list of state series contests hosted by your school.
3. Find the game you want and click on "Edit".
4. Fill out the score and other appropriate information and click the button labeled "FINAL" to submit.

Please note: Your score must be submitted online. It will appear on the ScoreZone page moments after you submit it.

ScoreZone Report

Competing Teams Score Status

Chicago (Morgan Park) 41 Time remaining Final

Wheaton (North) 0 Period

(If game is in progress)

Last updated at 7:22:11 am

Score is NOT final FINAL Score Your update will appear in the IHSA ScoreZone area within 60 seconds.

Highlights

Includes high scorer and rebounder for both teams. Please give first name, last name, and school of each player mentioned.

Your comments will be viewed by many people. Please keep them accurate and professional!

Three-Point Showdown Advancers

Please give the first name, last name, and school of each player who advanced to the next round.

If the game is not complete, click the "NOT FINAL" button.

Unusual Circumstances

If applicable, choose an option and give an explanation with information about the make-up date and site. Then click the "FINAL" button (if forfeited) or the "NOT FINAL" button.

(none) postponed suspended forfeited rain delay lightning delay other delay

A sample of the page in the IHSA Schools Center where you will submit Basketball scores.

It is the responsibility of each tournament manager to:

- Submit the final score of each contest you host.
- Submit the final score as soon as possible after the conclusion of each contest.

For more information, check out the ScoreZone page at www.ihsa.org/scores

Interactive ScoreZone means live updates!

Submitting scores online means being able to submit scores during the contest. Imagine being able to track scores from dozens of hot games around the state — as they happen. The technology is here. All we need now is your help.

How to Submit "Live Updates"

1. Log on to the IHSA Schools Center and find the contest you want to report (as outlined above).
2. Submit the score and the status of the contest (the inning, or the time remaining in the quarter or the half).
3. Submit the score as often as you like (including, of course, the final score).

Think it's a great idea, but need help? Remember, you can give the ScoreZone password to a trusted student or adult. The ScoreZone password gives access only to the ScoreZone area of the Schools Center. Live updates can be posted from the site of the contest, or even from home while listening to the radio.

No obligation: You are not required to submit "live updates" — but you just might want to!

Girls Basketball Tournament Series Ticket Distribution Plan

Plans for distributing tickets for the 2012 Girls Tournament Series Basketball have been established by the Board of Directors. The plans are designed to guarantee IHSA member schools the opportunity to purchase season tickets for the State Final Tournament(s), and to provide a sufficient number of tickets for each of the schools actually participating in these tournaments.

Ticket Prices

Specific statewide prices have been adopted for all girls Class 1A and 2A and Class 3A and 4A tournaments. Tournament managers must charge ticket prices as established by the Board of Directors.

Regionals — \$4.00 per session
Sectionals — \$5.00 per session
Super-Sectionals — \$8.00 per session

General Admission

State Final — \$10.00 per session

Season Tickets

\$40.00
(Baby in arms = Free Admission)

NOTE: Season Ticket Prices for Regional/Sectional Meets and Tournaments

Local managers of Regional and/or Sectional meets and tournaments in which two (2) or more sessions are conducted may sell season tickets along with session tickets. In the event a manager exercises this option, the season ticket price will be the session ticket price times the number of sessions.

Single Session tickets to be sold from the allotment made available to schools competing in the State Final Tournament will be \$10.00 each. Single-session tickets will go on sale by mail, by telephone (credit card only) or over the counter at Redbird Arena beginning the first Monday in February, and shall be priced at \$10.00 each and on sale until the day the tournament begins.

NOTE: Presale tickets for Regional Finals, and Sectional Semifinals and Finals

1) Host schools must provide presale tickets to schools competing in Regional Finals, Sectional Semifinals and Finals, if requested to do so by a competing team.

2) Competing teams are responsible for all of the presale tickets they are given. All unsold tickets must be returned to the host at least three (3) hours prior to game time.

Regional Final: Requests for presale tickets at the Regional finals must be made by Monday, February 6 for Class 1A and 2A and Monday, February 13 for Class 3A and 4A.

Sectional Semifinals and Finals: Requests for presale tickets at the Sectional Semifinals and Finals must be made by Thursday, February 9 for Class 1A and 2A and Thursday, February 16 for Class 3A and 4A.

Super-Sectional Distribution

1) A reasonable number of spaces shall be reserved for the press, radio, bench officials, players and other team personnel.

2) The ticket price for each Super-Sectional game shall be as noted above in "Ticket Prices".

3) Local managers of Super-Sectional games are instructed to devise plans whereby an equitable portion of the better seats will be made available to the followers of the teams competing in the game.

4) Notifying Competing Teams: The local manager of each Super-Sectional center shall telephone the principal or ticket manager of each school winning Sectional Semifinal games at the two (2) correlated Sectionals and must notify them as to the number of tickets allotted to their schools. At this time, arrangements also will be made for delivery of the Super-Sectional ticket allotment by a representative from the Super-Sectional site to the principal (or designee) of the school winning each of the correlated Sectional championship games. Arrangements for payment and return of tickets to the Super-Sectional center also will be completed. Delivery of the Super-Sectional allotment must be made at the site of both Sectionals subsidiary to the Super-Sectional on the date of the championship games, in order for the participating schools to have an opportunity to sell Super-Sectional tickets in advance.

State Final Distribution

A) Advance Sale to Member Schools:

Girls Class 1A and 2A and Class 3A and 4A State Final Tournament season tickets will be distributed to member schools as follows:

1) Each member school will receive a set of order forms for the Class 1A and 2A and Class 3A and 4A State Final Tournament mailed from the IHSA Office in early November. Each member school ordering season tickets must return the order form(s) with proper remittance on or before the deadline of January 13, 2015, to receive its allotment of tickets in the guaranteed section for the State Final Tournament games in the classification in which the school's enrollment places it.

2) Any number of season tickets may be ordered by a member school. Member schools may order season tickets for both classes. Single session tickets will be sold at the Redbird Arena beginning the first Monday in February.

3) Class 1A and 2A and 3A and 4A season tickets are priced at \$40.00 each. Both student and adult tickets will be one price.

4) All tickets for Redbird Arena will be sold as general admission tickets at a cost of \$10.00 each. Each participating school will receive tickets for pre-sale.

5) All ticket orders will be filled by the Redbird Arena Ticket Office based upon their date of receipt.

6) Season tickets will be set aside for the tournament for use by the IHSA Board of Directors, the news media and other persons to be determined by the Board of Directors.

(Note: Filled orders will be mailed from the Redbird Arena Ticket Office on the first Monday in February.)

B) Sale of Session Tickets to Schools Playing in the State Final:

1) The Tournament Manager at the site of each Super-Sectional game will personally give to the principal (or designee) of the school winning the game that school's allotment of tickets for the upcoming Semifinal session of the State Final Tournament at Redbird Arena.

2) Each of the four schools participating in each session shall be guaranteed the opportunity to purchase a share of the tickets available to participating schools. This number of tickets may vary from session to session. The remaining tickets will be allotted to member schools and for sale to others determined by the Board of Directors.

3) Price of session tickets to be sold to fans from competing schools will be (\$10.00). Both student and adult tickets will be one price.

4) Return of Unsold Tickets

All unsold tickets shall be returned to the Redbird Arena Ticket Office at the time your school reports for the team shoot-around on Thursday afternoon. Your school will be responsible for payment of all tickets not returned by the deadline specified for your team. This strict policy is necessary to permit the tickets not sold by your school to be placed on sale for the general public.

General Public Sale

A) Advance Tickets

1) Beginning January 14, 2015 season tickets for the Class 1A and 2A and Class 3A and 4A Girls State Final

Tournament(s) will be available for sale by mail. All mail orders must include an additional \$6.00 for the service charge to cover postage and handling. Checks, credit cards, or money orders may be used for ticket purchases. They should be made payable to: Illinois State University.

2) Beginning the first Monday of February, season and/or single-session tickets for the Class 1A and 2A and Class 3A and 4A Girls State Final Tournament(s) will be available for sale by telephone (credit card only) or over the counter at the Redbird Arena Ticket Office. Any number of tickets for either class may be purchased. Season tickets are priced at \$40.00 each. Single-session tickets are priced at \$10.00 each. Both student and adult tickets shall be one price. If tickets are available to fill each order as requested, there will be no refunds.

3) If a mail order includes an order for tickets for both Class 1A and 2A and Class 3A and 4A, and tickets are available for one class and not the other, the order for which tickets are available will be filled and a refund will be made for the balance of the order.

B) Day of Tournament

All single-session tickets sold at Redbird Arena each day of the State Final Tournament will be priced at \$10.00 each. Both student and adult tickets shall be one price.

2015 IHSA Girls March Madness General Time Schedule

Site: Redbird Arena, Illinois State University, Normal

Class 1A and 2A Girls Weekend (Feb. 26-28)

Class 1A and 2A Team Shootaround at Redbird Arena (Thursday, Feb. 26)

- 11:50-12:30 p.m. – Class 1A Game 1 Home Team—Team Photo (in uniform), Starting 5 Freeze Frame, Interviews (coach, 2 players)
12:30-1:00 p.m. – Class 1A Game 1 Home Team Shootaround on Redbird Arena Floor
12:20-1:00 p.m. – Class 1A Game 1 Visitor Team —Team Photo (in uniform), Starting 5 Freeze Frame, Interviews (coach, 2 players)
1:00-1:30 p.m. – Class 1A Game 1 Visitor Team Shootaround on Redbird Arena Floor
12:50-1:30 p.m. – Class 1A Game 2 Home Team —Team Photo (in uniform), Starting 5 Freeze Frame, Interviews (coach, 2 players)
1:30-2:00 p.m. – Class 1A Game 2 Home Team Shootaround on Redbird Arena Floor
1:20-2:00 p.m. – Class 1A Game 2 Visitor —Team Photo (in uniform), Starting 5 Freeze Frame, Interviews (coach, 2 players)
2:00-2:30 p.m.—Class 1A Game 2 Visitor Team Shootaround on Redbird Arena Floor
1:50-2:30 p.m. – Class 2A Game 3 Home Team —Team Photo (in uniform), Starting 5 Freeze Frame, Interviews (coach, 2 players)
2:30-3:00 p.m. – Class 2A Game 3 Home Team Shootaround on Redbird Arena Floor
2:20-3:00 p.m. – Class 2A Game 3 Visitor Team —Team Photo (in uniform), Starting 5 Freeze Frame, Interviews (coach, 2 players)
3:00-3:30 p.m. – Class 2A Game 3 Visitor Team Shootaround on Redbird Arena Floor
2:50-3:30 p.m. – Class 2A Game 4 Home Team —Team Photo (in uniform), Starting 5 Freeze Frame, Interviews (coach, 2 players)
3:30-4:00 p.m. – Class 2A Game 4 Home Team Shootaround on Redbird Arena Floor
3:20-4:00 p.m. – Class 2A Game 4 Visitor Team —Team Photo (in uniform), Starting 5 Freeze Frame, Interviews (coach, 2 players)
4:00-4:30 p.m. – Class 2A Game 4 Visitor Team Shootaround on Redbird Arena Floor

Class 1A and 2A Three-Point Shooting Preliminaries (Thursday, Feb. 26)

Required Photo Session at Redbird Arena

- 4:35-4:55 p.m. -- Group Photo Session Three-Point Shooters
4:57-5:00 p.m. -- Floor Swept for Three-Point Showdown

Three-Point Shooting Preliminaries at Redbird Arena

- 5:00-5:03 p.m. – 1A Group 1 Warm-up (South Basket)
5:00-5:03 p.m. – 2A Group 2 Warm-up (North Basket)
5:04-5:11 p.m. – 1A Group 1 Shooting
5:04-5:11 p.m. – 2A Group 2 Shooting
5:12-5:15 p.m. – 1A Group 3 Warm-up (South Basket)
5:12-5:15 p.m. – 2A Group 4 Warm-up (North Basket)
5:16-5:23 p.m. – 1A Group 3 Shooting
5:16-5:23 p.m. – 2A Group 4 Shooting

- 5:24-5:27 p.m. – 1A Group 5 Warm-up (South Basket)
5:24-5:27 p.m. – 2A Group 6 Warm-up (North Basket)
5:28-5:35 p.m. – 1A Group 5 Shooting
5:28-5:35 p.m. – 2A Group 6 Shooting
5:36-5:39 p.m. – 1A Group 7 Warm-up (South Basket)
5:36-5:39 p.m. – 2A Group 8 Warm-up (North Basket)
5:40-5:47 p.m. – 1A Group 7 Shooting
5:40-5:47 p.m. – 2A Group 8 Shooting
5:48-5:51 p.m. -- Tiebreaker Warm-up
5:52-5:59 p.m. -- Tiebreaker Shooting

Class 1A and 2A Meetings, Meal Functions (Thursday, Feb. 26)

- 6:15 p.m. -- Meeting of Elite Eight School Administrators, Team Hosts, ISU Staff @ Doubletree Hotel
7:00 p.m. –Class 1A and 2A Girls Basketball Celebration Banquet @ Doubletree Hotel
8:15 p.m. (approximate) -- Meeting of Floor Officials assigned to State Final @ Doubletree Hotel

Class 1A and 2A Tournament, Redbird Arena (Friday-Saturday, Feb. 27-28)

- Semifinal Session 1 (Friday)
12:00 p.m. – Cl. 1A Game No. 1
1:45 p.m. (Approx.) – Cl. 1A Three-Point Finals
2:00 p.m. (Approx.) – Cl. 1A Game No. 2
Semifinal Session 2 (Friday)
6:30 p.m. – Cl. 2A Game No. 3
8:00 p.m. (Approx.) – Cl. 2A Three-Point Finals
8:15 p.m. (Approx.) – Cl. 2A Game No. 4
Finals Session 3 (Saturday)
12:00 p.m. -- Game 5 – Cl. 1A Loser Game No. 1 vs. Cl. 1A Loser Game No. 2 (3rd Place Game)
1:45 p.m. (Approx.) -- Game 6 – Cl. 1A Winner Game No. 1 vs. Cl. 1A Winner Game No. 2 (Championship)
Finals Session 4 (Saturday)
6:30 p.m. -- Game 7 – Cl. 2A Loser Game No. 3 vs. Cl. 2A Loser Game No. 4 (3rd Place Game)
8:15 p.m. (Approx.) -- Game 8 – Cl. 2A Winner Game No. 3 vs. Cl. 2A Winner Game No. 4 (Championship)

Class 1A and 2A Three-Point Finals, Redbird Arena (Friday, Feb. 27)

- 12:00 p.m. – Cl. 1A Semifinal Game No. 1 Begins
1:45 p.m. (Approx.) – Cl. 1A Three-Point Shooting Finals
6:30 p.m. – Cl. 2A Semifinal Game No. 2 Begins
8:00 p.m. (Approx.) – Cl. 2A Three-Point Shooting Finals

Class 3A and 4A Girls Weekend (March 5-7)

Class 3A and 4A Team Shootaround at Redbird Arena (Thursday, March 5)

- 11:50-12:30 p.m. – Class 3A Game 1 Home Team—Team Photo (in uniform), Starting 5 Freeze Frame, Interviews (coach, 2 players)
12:30-1:00 p.m. – Class 3A Game 1 Home Team Shootaround on Redbird Arena Floor
12:20-1:00 p.m. – Class 3A Game 1 Visitor Team —Team Photo (in uniform), Starting 5 Freeze Frame, Interviews (coach, 2 players)
1:00-1:30 p.m. – Class 3A Game 1 Visitor Team Shootaround on Redbird Arena Floor
12:50-1:30 p.m. – Class 3A Game 2 Home Team —Team Photo (in uniform), Starting 5 Freeze Frame, Interviews (coach, 2 players)
1:30-2:00 p.m. – Class 3A Game 2 Home Team Shootaround on Redbird Arena Floor
1:20-2:00 p.m. – Class 3A Game 2 Visitor —Team Photo (in uniform), Starting 5 Freeze Frame, Interviews (coach, 2 players)
2:00-2:30 p.m.—Class 3A Game 2 Visitor Team Shootaround on Redbird Arena Floor
1:50-2:30 p.m. – Class 4A Game 3 Home Team —Team Photo (in uniform), Starting 5 Freeze Frame, Interviews (coach, 2 players)
2:30-3:00 p.m. – Class 4A Game 3 Home Team Shootaround on Redbird Arena Floor
2:20-3:00 p.m. – Class 4A Game 3 Visitor Team —Team Photo (in uniform), Starting 5 Freeze Frame, Interviews (coach, 2 players)
3:00-3:30 p.m. – Class 4A Game 3 Visitor Team Shootaround on Redbird Arena Floor
2:50-3:30 p.m. – Class 4A Game 4 Home Team —Team Photo (in uniform), Starting 5 Freeze Frame, Interviews (coach, 2 players)
3:30-4:00 p.m. – Class 4A Game 4 Home Team Shootaround on Redbird Arena Floor
3:20-4:00 p.m. – Class 4A Game 4 Visitor Team —Team Photo (in uniform), Starting 5 Freeze Frame, Interviews (coach, 2 players)
4:00-4:30 p.m. – Class 4A Game 4 Visitor Team Shootaround on Redbird Arena Floor

Class 3A and 4A Three-Point Shooting Preliminaries (Thursday, March 5)

Required Photo Session at Redbird Arena

- 4:35-4:55 p.m. -- Group Photo Session Three-Point Shooters
4:57-5:00 p.m. -- Floor Swept for Three-Point Showdown

Three-Point Shooting Preliminaries at Redbird Arena

- 5:00-5:03 p.m. – Cl. 3A Group 1 Warm-up (South Basket)
5:00-5:03 p.m. – Cl. 4A Group 2 Warm-up (North Basket)
5:04-5:11 p.m. – Cl. 3A Group 1 Shooting
5:04-5:11 p.m. – Cl. 4A Group 2 Shooting
5:12-5:15 p.m. – Cl. 3A Group 3 Warm-up (South Basket)
5:12-5:15 p.m. – Cl. 4A Group 4 Warm-up (North Basket)
5:16-5:23 p.m. – Cl. 3A Group 3 Shooting
5:16-5:23 p.m. – Cl. 4A Group 4 Shooting
5:24-5:27 p.m. – Cl. 3A Group 5 Warm-up (South Basket)
5:24-5:27 p.m. – Cl. 4A Group 6 Warm-up (North Basket)
5:28-5:35 p.m. – Cl. 3A Group 5 Shooting
5:28-5:35 p.m. – Cl. 4A Group 6 Shooting
5:36-5:39 p.m. – Cl. 3A Group 7 Warm-up (South Basket)
5:36-5:39 p.m. – Cl. 4A Group 8 Warm-up (North Basket)
5:40-5:47 p.m. – Cl. 3A Group 7 Shooting
5:40-5:47 p.m. – Cl. 4A Group 8 Shooting
5:48-5:51 p.m. -- Tiebreaker Warm-up
5:52-5:59 p.m. -- Tiebreaker Shooting

Class 3A and 4A Meetings, Meal Functions (Thursday, March 5)

- 6:15 p.m. -- Meeting of Elite Eight School Administrators, Team Hosts, ISU Staff @ Doubletree Hotel
7:00 p.m. –Class 3A and 4A Girls Basketball Celebration Banquet@ Doubletree Hotel
8:15 p.m. (approximately) -- Meeting of Floor Officials Assigned to State Final@ Doubletree Hotel

Class 3A and 4A Tournament, Redbird Arena (Friday-Saturday, March 6-7)

Semifinal Session 1 (Friday)

- 12:00 p.m. – Cl. 3A Game No. 1
1:45 p.m. (Approx.) – Cl. 3A Three-Point Finals
2:00 p.m. (Approx.) – Cl. 3A Game No. 2

Semifinal Session 2 (Friday)

- 6:30 p.m. – Cl. 4A Game No. 3
8:00 p.m. (Approx.) – Cl. 4A Three-Point Finals
8:15 p.m. (Approx.) – Cl. 4A Game No. 4

Finals Session 3 (Saturday)

- 12:00 p.m. -- Game 5 – Cl. 3A Loser Game No. 1 vs. Cl. 3A Loser Game No. 2 (3rd Place Game)
1:30 p.m. (Approx.) – Three-Point Queen of the Hill
2:00 p.m. (Approx.) -- Game 6 – Cl. 3A Winner Game No. 1 vs. Winner Game No. 2 (Championship)

Finals Session 4 (Saturday)

- 6:30 p.m. -- Game 7 – Cl. 4A Loser Game No. 3 vs. Cl. 4A Loser Game No. 4 (3rd Place Game)
8:15 p.m. (Approx.) -- Game 8 – Cl. 4A Winner Game No. 3 vs. Cl. 4A Winner Game No. 4 (Championship)

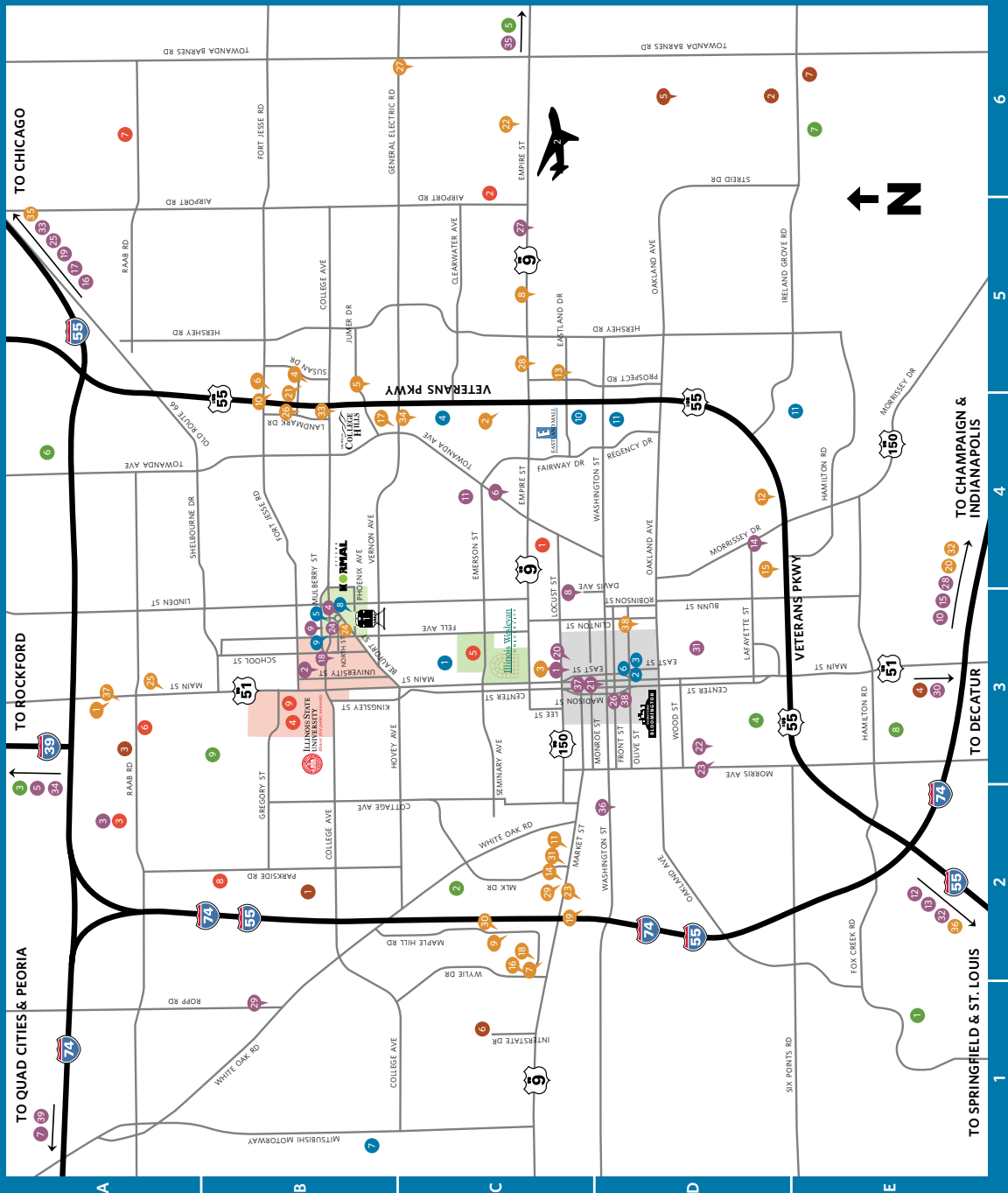
Class 3A and 4A Three-Point Shooting Finals, Redbird Arena (Friday, March 6)

- 12:00 p.m. – Cl. 3A Semifinal Game No. 1 Begins
1:45 p.m. (Approx.) – Cl. 3A Three-Point Finals
2:00 p.m. (Approx.) – Cl. 3A Semifinal Game No. 2 Begins
6:30 p.m. – Cl. 4A Semifinal Game No. 1 Begins
8:00 p.m. (Approx.) – Cl. 4A Three-Point Finals
8:15 p.m. (Approx.) - Cl. 4A Semifinal Game No. 2 Begins

Queen Of The Hill, Redbird Arena (Saturday, March 7)

- 12:00 p.m. – Cl. 3A Consolation Game Begins
1:30 p.m. (Approx.) -- Queen Of The Hill, Redbird Arena
2:00 p.m. (Approx.) – Cl. 3A Championship Game Begins
6:30 p.m. – Cl. 4A Consolation Game Begins
8:15 p.m. (Approx.) – Class 4A Championship Game Begins

Bloomington-Normal Area Map



ACCOMMODATIONS

- Americas Best Value Inn
- Baymont Inn & Suites
- Burr House Bed & Breakfast
- Candlewood Suites Hotel
- The Chateau Hotel & Conference Center
- Comfort Suites East
- Country Inn & Suites Airport
- Country Inn & Suites West
- Courtyard by Marriott
- Days Inn
- DoubleTree by Hilton
- Extended Stay America
- Fairfield Inn & Suites
- Hampton Inn & Suites
- Hawthorn Suites & Conference Center
- Holiday Inn Express LeRoy
- Holiday Inn Hotel & Suites
- La Quinta Inn
- Marriott Hotel & Conference Center
- Moel 6
- Parke Hotel & Conference Center
- Quality Inn & Suites East
- Quality Inn & Suites West
- Ramada Limited & Suites
- Read Roof Inn Bloomington
- Read Roof Inn LeRoy
- Signature Inn
- Super 8 Bloomington
- Super 8 Chenoa
- Super 8 McLean
- Super 8 Normal
- Vrooman Mansion Bed & Breakfast

AREA EDUCATION

- Bloomington High School
- Central Catholic High School
- Heartland Community College
- Illinois State University
- Illinois Wesleyan University
- Lincoln College-Normal
- Normal Community High School
- Normal West High School
- University High School

COMMUNITY

- Advocate Brodlem Medical Center
- Bloomington City Hall
- Bloomington Public Library
- COUNTRY Financial Home Office
- Economic Development Council
- Illinois State Chamber of Commerce
- Mitsubishi Motors North America
- Normal City Hall
- Normal Public Library
- OSF St. Joseph Hospital
- State Farm Home Office

SHOPPING

- Eastland Mall
- Downtown Bloomington
- The Shoppes at College Hills
- Uptown Normal

ATTRACTIONS

- Bloomington Center for the Performing Arts
- Braden Auditorium
- Challenger Learning Center
- Children's Discovery Museum
- Comara County Park
- Community Players Theatre
- Conrad's Barn II Dinner Theatre
- David Davis State Office Building
- Ecology Center
- Evangelical Lutheran Historical Museum
- Evangelical Lutheran Historical Museum Genevieve Green Gardens
- Funk's Grove Pure Maple Syrup
- Funk's Prairie Home & Gem & Mineral Museum
- Grady's Family Fun Park
- Grand Village of the Kickapoo Park
- Historic Route 66 Memory Lane
- ISU Farm
- ISU Planetarium
- Matthew T. Scott Home
- McLean County Arts Center
- McLean County Museum of History
- Miller Park Pavilion & War Memorial
- Miller Park Zoo
- Normal Theater
- Patton Log Cabin
- Pepper Pavilion Museum
- Rike House Museum
- Ropp Jesse Cheese Farm
- Simpkins War Museum
- Stevenson Graves at Ewgreen Memorial Cemetery
- Sugar Grove Nature Center
- Telephone Museum of Gridley
- Timber Pointe Outdoor Center
- Twin Groves Wind Farm
- Upper Limits Rock Climbing
- USA Ballot
- U.S. Cellular Coliseum
- White Oak Vineyards, Inc.

EVENT COMPLEXES

- Champion Fields
- Community Soccer Fields
- The Corn Crib
- Extra Innings
- Game Time Gym II
- McLean County Fairgrounds/Interstate Center
- McLean County Pony Fields at the Shire Baseball Complex

GOLF COURSES

- The Den at Fox Creek
- Golf Learning Center
- Hazy Hills Golf Course
- Inland Park Golf Course
- Inland State Golf Club
- The Links at Island Grove
- Prairie Vista Golf Course
- Weilberg Golf Club at SU

TRANSPORTATION

- AMTRAK Station
- Central Illinois Regional Airport

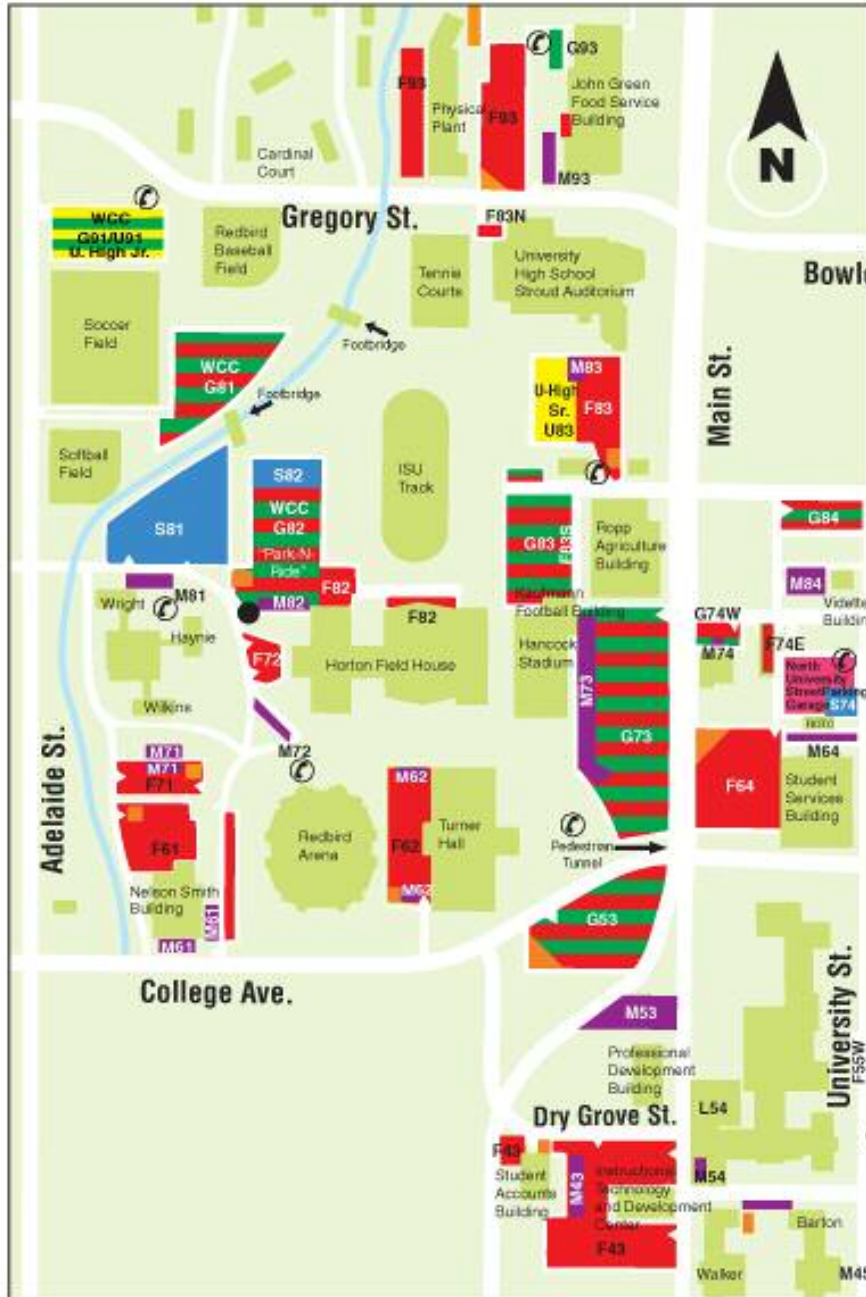
Map is not to scale. Please contact the Bloomington-Normal Area Convention and Visitors Bureau for help finding specific locations.

**IHSA Fan
Parking
Friday**

- G-53
- G-82
- G-73,
- G-81
- G-83
- G-91

**IHSA Fan
Parking
Saturday**

- U-83
- G-82
- F-61
- G-73
- G-81
- F-71
- G-83
- G-91
- F-43
- G-53,
- F-93
- F-64 &
- North
- University
- St.
- Parking
- Garage



- Faculty/Staff
- Commuter
- Guaranteed student storage
- Reserved Areas
- Meters/Pay lots
- Motorcycle/Moped
- University High School

Do you have a question about parking?

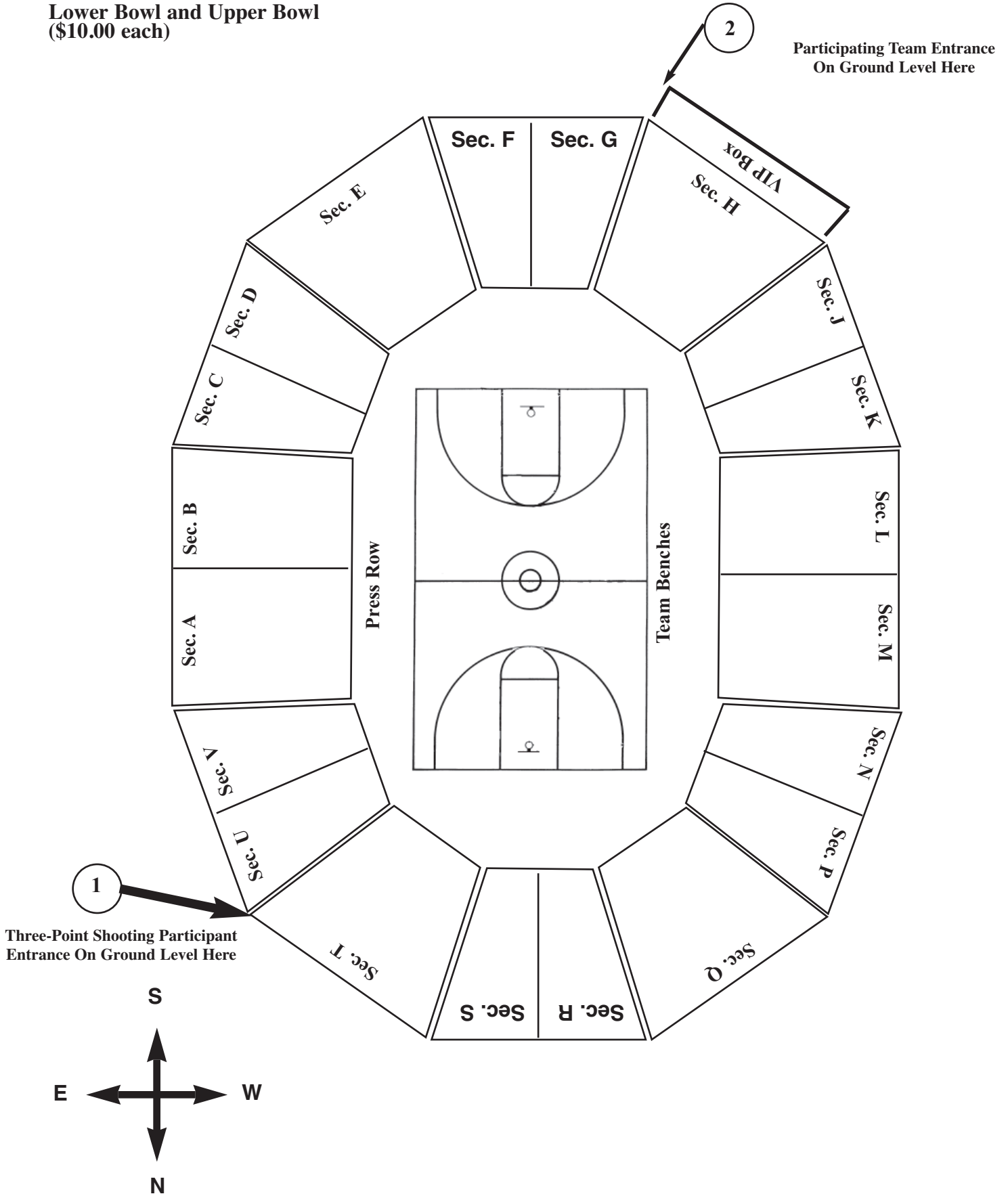
Office of Parking and Transportation
(309) 438-8391
University Police
(309) 438-8631
Recorded information
(309) 438-PARK
www.parking.ilstu.edu
www.redbirdride.ilstu.edu

- Lot entrance
- Emergency telephone
- Courtesy drop box

Redbird Arena Seating Chart

**Lower Bowl and Upper Bowl
(\$10.00 each)**

**Participating Team Entrance
On Ground Level Here**





Girls Basketball State Final Hotel Information



TEAMS

The IHSA will reserve a block of rooms for teams competing at the state finals for their use if they so choose. Any expenses or costs associated or charged to the rooms will be at each schools expense. Specific information will be provided in the Super-Sectional Winners material.

FANS

A Link to the Bloomington-Normal Convention & Visitors Bureau can be located thru the IHSA website at www.ihsa.org. Under Sports and Activities select “Girls Basketball.” Choose “Lodging.”

Internet Video Broadcasting Information



Contact: Matt Troha • mtroha@ihsa.org • Phone: 309-663-6377 • Fax: 309-663-7479

IHSA Tournament Managers/Hosts,

The advent of greater broadcasting technology over the past few years has brought about many new potential broadcasters and many new broadcasting platforms and mediums, especially as it pertains to broadcasting video over on the internet. It is important to remember that most internet video streams of IHSA State Series (Regionals, Sectionals, Super-Sectionals, Football Playoffs) events will require that a broadcast rights fee be paid by the broadcasting individual/company. A new internet video broadcasting fee schedule has been developed and is located below, but first please read these reminders on how to determine if a fee is necessary should you be approached about a video webcast of the State Series event you are hosting. If at any time you ever have questions on the fees or any other matters related to broadcasting or media, please call Matt Troha at the IHSA office (309-663-6377).

BROADCAST RIGHTS FEE PAYMENT REQUIRED

There is an IHSA broadcast rights fee required with the broadcast if any one of the options below is applicable...

- 1) The internet video webcast is originated and accessible to viewers on any third-party website (i.e. media website, IHigh, Ustream, High School Cube, fan site, etc.).
- 2) If the crew producing the internet video webcast is not affiliated with the high school or not composed entirely of high school students and/or high school personnel.

BROADCAST RIGHTS FEE PAYMENT NOT REQUIRED

There is no IHSA broadcast rights fee required if both guidelines below are met...

- 1) The internet video webcast is produced and the crew populated entirely by high school students and high school personnel as a part of a high school tv station, AV Club, etc.
and
- 2) The internet video webcast is originated on and accessed by viewers on the high school website, the website of the city or on the school's IHSA.tv website (www.IHSA.tv/schoolname).

Internet Video Broadcast Rights Fee Schedule

Prior to the 2011-12 school year, internet video webcasts fell under the same broadcast rights fee schedule as television. Because of the growing number of internet broadcasting entities, the IHSA Media Advisory Committee felt like it was in the best interest of the medium to develop more affordable broadcast rights fees for video internet broadcasts. The rights fee schedule below was adopted beginning in the fall of 2011 for streaming video:

BOYS BASKETBALL

Per Regional Game-\$50
Per Sectional Game-\$75
Per Super-Sectional Game-\$100

Per Regional Tournament-\$100
Per Sectional Tournament-\$125

GIRLS BASKETBALL

Per Regional Game-\$50
Per Sectional Game-\$50
Per Super-Sectional Game-\$75

Per Regional Tournament-\$75
Per Sectional Tournament-\$75

FOOTBALL

Per 1st Round Playoff Game-\$50
Per 2nd Round Playoff Game-\$50
Per Quarterfinal Playoff Game-\$75
Per Semifinal Playoff Game-\$100

ALL OTHER SPORTS

Per Regional Game/Meet-\$25 (\$50 whole tournament)
Per Sectional Game/Meet-\$50 (\$75 whole tournament)
Per Super-Sectional Game/Meet-\$75

STUDENT MEDIA CREDENTIALS FOR PARTICIPATING SCHOOLS

Congratulations on qualifying for an IHSA state final in a team sport. In order to provide the best possible coverage of this event for your school newspaper, yearbook and AV club, etc. you are entitled to have up to three students receive credentials to cover this event as official media members. In the event that you have less than three students, an adult sponsor may be included on this list. To apply for student media credentials, please have your Athletic Director or an individual involved with the aforementioned programs email Matt Troha (mtroha@ihsa.org) at the IHSA with the following information:

- 1) The names of individuals attending
- 2) Whether they are students or adults
- 3) If the attending individuals will serve as reporters, photographers, videographers, etc.

Student media who are registering for credentials are expected to maintain a level of professionalism while covering this event. That includes no cheering while in the press box or game coverage area. Proper attire is also required. Wearing school shirts and colors is acceptable, but students wearing face paint, costumes, carrying props, etc. will be required to change before receiving credential clearance.

The individual applying for student media credentials will receive specific information on credential pick-up and media regulations at the event via email in the days leading up to the state final.

Please note that student media credentials are only available for state final events in team sports. Due to the sheer volume of schools who qualify in individual sports, our press facilities would be unable to accommodate student media from all participating schools in individual sports. Student media are also welcome to cover IHSA state final activities. Credentials are not required for these events, but please have your students check-in with state final personnel upon arrival for media coverage regulations.

VIDEO TAPING STATE FINALS FOR COACH FILM BREAKDOWN

Each school will be eligible to receive a pass for an individual attending the state final event to shoot game film that is for the sole purpose of being used by the coaching staff for postgame breakdown. Passes for videographers shooting highlight videos, documentaries, etc. should be included in student media application reference above. Additional passes for videotaping purposes will need to come from the allotment of state final passes given to school/head coach at or prior to the state final event.

To apply for a credential to shoot video, please have your Athletic Director email Matt Troha (mtroha@ihsa.org) at the IHSA with the name of the individual who will be taping and whether they are an adult or a student.

Please contact Matt Troha (309-663-6377) at the IHSA for any questions related to this document.



2015 Country Financial Three-Point Regional School Participant Entry Form

Competing School: _____

	First Name	Last Name	Year	Uniform #
1.				
2.				
3.				
4.				

Athletic Director Name _____ Cell Phone _____

Coach Name _____ Cell Phone _____

Must be completed by AD or Head Coach and faxed to the host manager 24 hours prior to competition!
Substitution of participating athletes may occur 24 hours prior to competition.
Individuals advancing to the Sectional competition will be listed on the IHSA ScoreZone.

Girls' 2015 COUNTRY Financial Three-Point Showdown Participant Instructions

As a participant in the 2015 Girls COUNTRY Financial Three-Point competition, we ask that you please review these instructions with your coach and family. We also would ask you to email a head and shoulder photo to be included in the official Girls Basketball State Final Program. Please note the information and deadline for photos to be emailed to the IHSA Office below. You may want to email your photo prior to actually qualifying for the competition. If you have any question afterwards, please contact Assistant Executive Director, Beth Sauser or Coordinator of Special Programs, Kayode Adegoke at the IHSA Office.

For the twenty-third time in the history of girls' basketball, as many as 256 more students will have the opportunity to come to Illinois State University at Redbird Arena and experience a special part of **America's Original March Madness**. We hope you will learn from your competitive experience, and we hope you will have fun doing it.

Photo Deadlines: Class 1A and 2A Three-Point – Saturday, February 21, 2015

Class 3A and 4A Three-Point – Saturday, February 28, 2015

Please use the following guidelines when emailing your photo: Save the file with a .JPG or .TIF extension. **In the subject area of the email, please include the participant's name and school.** This is very important as we will receive a large number of photos. Please email your photo to: lmuxfeld@ihsa.org

General Information: Redbird Arena is located on West College Avenue, Normal, IL. Phone (309) 438-3513.

Class 1A and 2A Dates of Competition: Class 1A and Class 2A preliminaries in the COUNTRY Financial Three-Point Showdown will be conducted Thursday, February 26, 2015, at Redbird Arena in Normal. The preliminaries are scheduled to begin at 5:00 p.m. A Group Photo session will precede the competition at 4:35 p.m. Four contestants in the Class 1A competition of the Three-Point Shooting competition will qualify for the Class 1A Finals on Friday, February 27, 2015, between the Class 1A Semifinal Games (approx. 1:45 p.m.). Four contestants in the Class 2A competition of the Three-Point Shooting competition will qualify for the Class 2A Finals on Friday, February 27, 2015, between the Class 2A Semifinal Games (approx. 8:00 p.m.). The Class 1A and Class 2A champions will compete on Saturday,

March 7, 2015 with the Class 3A and 4A champions at the conclusion of the Class 3A Third Place Game (approx. 1:30 p.m.), for **Queen Of The Hill** honors.

Class 3A and 4A Dates of Competition: Class 3A and Class 4A preliminaries in the COUNTRY Financial Three-Point Showdown will be conducted Thursday, March 5, 2015, at Redbird Arena in Normal. The preliminaries are scheduled to begin at 5:00 p.m. A Group Photo session will precede the competition at 4:35 p.m. Four contestants in the Class 3A competition of the Three-Point Shooting competition will qualify for the Class 3A Finals on Friday, March 6, 2015, between the Class 3A Semifinal Games (approx. 1:45 p.m.).

Four contestants in the Class 4A competition of the Three-Point Shooting competition will qualify for the Class 4A Finals on Friday, March 6, 2015, between the Class 4A Semifinal Games (approx. 8:00 p.m.).

The Class 3A and Class 4A champions will compete on Saturday, March 7, 2015 with the Class 1A and Class 2A champions at the conclusion of the Class 3A Third Place Game (approx. 1:30 p.m.), for **Queen Of The Hill** honors.

Transportation and Parking: It is the responsibility of each contestant to arrange for transportation to and from Redbird Arena. Each day, contestants should park in any of the public lots near the Redbird Arena complex. No special parking will be provided on Thursday, Friday or Saturday.

Lodging: Rooms at Holiday Inn and Hotel Suites, 3202 E. Empire, Bloomington, IL will be provided by the IHSA Office to the **four finalists** in each of the Class 1A, 2A, 3A and 4A Three-Point Shooting Competitions. Each finalist using a room must be accompanied by an adult who registers for the room. These rooms will be available for the Class 1A and Class 2A Finalists on Thursday night (February 26), and for Class 3A and Class 4A Finalists on Thursday night (March 5). **Contestants who do not qualify for the Three-Point Contest Finals will be responsible for their own lodging, and rooms will not be available through the IHSA Office.** Finalists are not obligated to use housing provided through the IHSA Office.

Entering Redbird Arena: On Thursday, contestants must enter Redbird Arena at the lower northeast entrance. It is located in the northeast corner of Redbird Arena on the underground level just south of Horton Fieldhouse. See Redbird Arena diagram for

exact location. After entering Redbird Arena at the northeast entrance, pick up your packet of information and tickets. On Friday and Saturday, those contestants who do not qualify for the finals are to use their season ticket and may enter any of the regular gates. The four finalists in each class and their coach may enter Redbird Arena on their season ticket for the respective sessions.

When To Report Thursday: Class 1A and Class 2A Contestants are to report to Redbird Arena between 3:30 and 4:30 p.m., Thursday, February 26 and Class 3A and Class 4A Contestants on Thursday, March 5. Report to the personnel at the north baseline of the Arena to pick up a packet containing a season ticket and other material. Packets will be given only to properly identified, qualifying contestants. Contestants should report dressed in school uniform and warm-up. Contestants must report to the arena floor in uniform for the required group photo at 4:35 p.m. Preliminary competition will begin at 5:00 p.m.

Contestant Tickets/Required Floor Passes: Each qualifier for the **Three-Point Shooting** preliminaries will receive one (1) complimentary general admission season ticket to the respective Girls State Final Basketball Tournament. It is to be used for admission to Redbird Arena on Friday and Saturday. Each of the finalists in each of the Class 1A, 2A, 3A and Class 4A competitions will receive two (2) Girls Basketball State Tournament Contestant Tags on Thursday evening after the completion of the preliminaries for use Friday (when applicable).

Tickets For Others: Preliminary competition on Thursday, February 26 and Thursday, March 5 are free to everyone. In order to see the games of the tournament Friday and/or Saturday, or the Three-Point Competition Friday, a ticket of admission for the tournament will be required. Tickets will be on sale at the Redbird Arena Ticket Office each day of the tournament.

Contestant Uniforms: Each contestant shall wear their official school team uniform, which shall be uniform jersey and uniform shorts. Uniform color shall be at the discretion of the participant. Shooters who appear at the competition not in school uniform, shall be disqualified from the shooting contest. Each contestant should report to Redbird Arena dressed to compete each time. Dressing room(s) will not be available.

Girls COUNTRY Financial 3-Point Shooting Participant Instructions

Personal Belongings: It is the responsibility of each contestant to make sure personal belongings are secure. We recommend contestants give them to their coach for safe keeping while you are competing. Neither Redbird Arena, nor IHSA, will be responsible for your personal belongings. Shower facilities following each competition will not be available.

Contestant-Coach Seating: All seats in the lower and upper bowl of Redbird Arena are general admission. On Friday and Saturday, all contestants and coaches may sit anywhere in which their season tickets allow access. Coaches may join their contestants on the arena floor Saturday only while the actual competition is under way.

Group Photo: We will take an official group photo of each of the Class 1A and Class 2A contestants on Thursday, February 26, and the Class 3A and Class 4A contestants on Thursday, March 5th, at 4:35 p.m. The group photos will be taken at mid-court on the arena floor. (See time schedule for additional information.) Contestants may order and purchase color prints of these group photos. Order information will be included in the contestant packet.

Class 1A Schedule of Competition: Report to the arena floor on Thursday, February 26, in school uniform at 4:35 p.m. for a Group Photo. Three-Point Shooting Preliminaries begin at 5:00 p.m. On Friday, February 27, the four finalists should report to the tunnel entrance adjacent to Room 102 at the south end of the arena floor when the scoreboard clock shows 5:00 minutes to go in the Class 1A Semifinal Game No. 1. Warm-up is scheduled to begin at approximately 1:45 p.m. To get to the tunnel, use any aisle at the north end of the arena floor. (See building diagram attached.) The Queen of the Hill competition will take place on Saturday, March 7, between the Class 3A Third Place and Championship Game at approximately 1:30 p.m.

Class 2A Schedule of Competition: Report to the arena floor on Thursday, February 26, in school uniform at 4:35 p.m. for a Group Photo. Three-Point Shooting Preliminaries begin at 5:00 p.m. On Friday, February 27, the four final-

ists should report to the tunnel entrance adjacent to Room 102 at the south end of the arena floor when the scoreboard clock shows 5:00 minutes to go in the Class 2A Semifinal Game No. 3. Warm-up is scheduled to begin at approximately 8:00 p.m. To get to the tunnel, use any aisle at the north end of the arena floor. (See building diagram attached.) The Queen of the Hill competition will take place on Saturday, March 7, between the Class 3A Third Place and Championship Game at approximately 1:30 p.m.

Class 3A Schedule of Competition: Report to the arena floor on Thursday, March 5, in school uniform at 4:35 p.m. for a Group Photo. Three-Point Shooting Preliminaries begin at 5:00 p.m. On Friday, March 6, the four finalists should report to the tunnel entrance adjacent to Room 102 at the south end of the arena floor when the scoreboard clock shows 5:00 minutes to go in the Class 3A Semifinal Game No. 1. Warm-up is scheduled to begin at approximately 1:45 p.m. To get to the tunnel, use any aisle at the north end of the arena floor. (See building diagram attached.) The Queen of the Hill competition will take place on Saturday, March 7, between the Class 3A Third Place and Championship Game at approximately 1:30 p.m.

Class 4A Schedule of Competition: Report to the arena floor on Thursday, March 5, in school uniform at 4:35 p.m. for a Group Photo. Three-Point Shooting Preliminaries begin at 5:00 p.m. On Friday, March 6, the four finalists should report to the tunnel entrance adjacent to Room 102 at the south end of the arena floor when the scoreboard clock shows 5:00 minutes to go in the Class 4A Semifinal Game No. 1. Warm-up is scheduled to begin at approximately 8:00 p.m. To get to the tunnel, use any aisle at the north end of the arena floor. (See building diagram attached.) The Queen of the Hill competition will take place on Saturday, March 7, between the Class 3A Third Place and Championship Game at approximately 1:30 p.m.

Results of Competition: Complete results will be posted on the IHSA website after competition each day.

Required Press Interviews: The four qualifiers in each of the Class 1A, 2A, 3A and 4A Three-Point Showdown, will be required to participate in an interview session with the press immediately following the conclusion of their respective preliminaries. The Press Interview Area will be located in room 101 at the end of the south tunnel off the arena floor. Any other participant on Thursday night may be interviewed by our local media on the arena floor after the event competition. The media has been given the same instructions. On Friday, the four finalists are required to participate in a press conference immediately following the conclusion of their respective competition. The four finalists Saturday also will be required to participate in a press conference following completion of both **Queen Of The Hill** events. All formal press conferences will take place in the Press Interview Area. Your coaches are most welcome to join you for any and all of the formal press conferences. The Queen of the Hill competitors will also be interviewed on the court as part of the state tournament telecast following the conclusion of their competition Saturday.

Trophy Presentations:

- (1) Plaques will be presented to the three finalists for Class 1A, 2A, 3A and 4A in the **Country Three-Point Showdown** who do not advance to the Queen of the Hill competition.
- (2) Plaques will be presented to the winners of the overall competition between the respective Class 1A, 2A, 3A and 4A winners in the Three-Point Shooting Contest.
- (3) A Queen of the Hill Champion award will be presented to the winner of the overall competition between the respective Class 1A, 2A, 3A and 4A winners in the **COUNTRY Financial Three-Point Showdown**.

Use of Photos: Photographs supplied to the IHSA Office, on or before the deadline dates listed, by each contestant in the shooting competition, will be used in the Official Program. Programs will be on sale at the tournament Thursday-Saturday.

2015 COUNTRY Financial Three-Point Showdown Participant Information

To be completed by participants in the COUNTRY Financial Three-Point Showdown. Please print clearly and **email this form along with a photo by the dates listed below:**

IMPORTANT DATES

Girls Class 1A & 2A Three-Point: Saturday, February 21

Girls Class 3A & 4A Three-Point: Saturday, February 28

Boys Class 1A & 2A Three-Point: Saturday, March 7

Boys Class 3A & 4A Three-Point: Saturday, March 14

Please use the following guidelines to email your Participant Information and Photo:

DIGITAL PHOTOGRAPHS – We greatly prefer digital photographs over scans.

SCANNED PHOTOGRAPHS – Scan the photograph at a **high resolution**, at least 500 dots wide.

Save the file with a .JPEG (.JPG) or .TIF extension.

E-Mail to: kadegoke@ihsa.org In the subject area of the email, please indicate the participants name and school.

Please check the skill contest(s) in which you will be participating:

Class 1A Class 2A Class 3A Class 4A

Boys Girls

Your Name _____

Name of School _____

City _____ Year in School _____

This form can be scanned and emailed with your picture or include all the information listed above (name, school name, class, city and year in school) in the body of an email with your picture attached.



IHSA Pass Gate List

Illinois High School Association
 2715 McGraw Dr., Bloomington, IL 61704
 Phone: 309-663-6377
 Fax: 309-663-7479

The fields in this form will accept a cursor and can be filled out prior to printing.

The following are the only persons representing a member school to be admitted free to this contest. The top seven (7) categories will be admitted for the entire tournament. Rostered players will only be admitted accompanied by the coach.

Participating schools must complete this form and return it to the tournament manager prior to the start of the event.

Sport/Activity:

Host School:

Level: Regional Sectional Super-Sectional

Your School:

The top seven (7) are allowed to have one (1) guest.

Administration

1.	<input type="text"/>	Guest	<input type="text"/>
2.	<input type="text"/>	Guest	<input type="text"/>
3.	<input type="text"/>	Guest	<input type="text"/>
4.	<input type="text"/>	Guest	<input type="text"/>
5.	<input type="text"/>	Guest	<input type="text"/>
6. Head Varsity Coach	<input type="text"/>	Guest	<input type="text"/>
7. Assistant Coach	<input type="text"/>	Guest	<input type="text"/>
Assistant Coach	<input type="text"/>		
Assistant Coach	<input type="text"/>		
Assistant Coach	<input type="text"/>		
8. Manager	<input type="text"/>		
9. Scorekeeper	<input type="text"/>		
10. Video/Camera Operator	<input type="text"/>		
11. Bus Driver	<input type="text"/>		
12. Athletic Trainer	<input type="text"/>		
13. All rostered players according to the terms and conditions.			

All other representatives from your school must pay to attend an IHSA tournament.

In case of emergency or need to communicate changes to your school:

Contact Person:	<input type="text"/>	Contact Person:	<input type="text"/>
Cell Phone:	<input type="text"/>	Cell Phone:	<input type="text"/>
Email:	<input type="text"/>	Email:	<input type="text"/>



Standardized Basketball Statistics



In an effort to standardize statistical information, personnel at member schools should incorporate the following when compiling individual and cumulative team basketball statistics:

In situations where a college or university Sports Information Department is responsible for statistical material, Super-Sectional managers should supply the SID with a copy of the box score for style purposes.

Uniform Statistical Recording

Terminology: Total Field Goal Made (FG) is all baskets made (which includes 2-point plus 3-point goals). Total Field Goal Attempted (FGA) is all shots attempted whether it is made or not. Three-Point Field Goal made is a shot made from beyond the 3-point line. Three-Point Field Goal attempted is a shot from beyond the 3-point line whether made or not. Free Throw Made (FT) is a foul shot made. Free Throw Attempted (FTA) is foul shot attempted whether it is made or not. Rebound (REB) is a missed shot retrieved by an individual whether or not the shot was taken by a teammate or an opponent. Assist (A) is a pass from a teammate that leads directly to a basket (NOTE: If player takes two dribbles before shooting, no assist is to be credited unless play is a breakaway.) Personal Foul (PF) is the number of fouls committed. Total Points (TP) are the actual number of points scored by an individual and team — by adding 2-point field goals plus the 3-point field goals and the free throws totals together. Blocked Shots (BLK) are opponent shots blocked which do not hit the rim or backboard. Steals (S) are when a player takes the ball away from the opponent before the opponent can shoot or pass the ball.

Important: When showing field goals and three-point field goals, the overall field goals is total 2 point and 3 point field goals made and attempted. The 3 point field goals are only those made and attempted from 3 point range. When figuring the up-to-date totals, you must list all 2 point and 3 point field goal attempts and all 2 point and 3 point field goals made in the overall column and only the 3 point made and attempted in that column. When we justify the statistics, we multiply total field goals made by two (2) points, add in one point for each 3 point field goal made and add in one point for each free throw made.

Example:

Name	Overall 2-pt. + 3-pt. FG-FGA	Only 3-pt. FG-FGA	All FT M-Att	Tot. Points
Marty Hickman	10-20 (2x10=20)	2-4 2 (=22)	7-10 7 (=29)	29

Scoring Rules:

- a) ALL shots, whether from the field or from the foul line, unless nullified by a floor violation, foul, or elapsed time must be counted.
- b) Rebounds should be awarded when a player gains control of a missed shot, regardless of whether he catches the ball in the air or on the bounce.

Important Notes:

- a) When an offensive player tips a missed shot back at the basket, one rebound and one field goal attempted should be recorded.
- b) No individual rebound should be awarded when the ball goes out of bounds after a missed shot. That should be recorded as a team rebound for the team that receives the ball.
- c) If a shooter misses the first of a pair of free throws on a two-shot foul, the team shooting should receive a team rebound.
- d) The total number of missed shots should equal the total number of rebounds.
- e) Technical fouls on individual players are included in the personal foul category.
- f) Score by Quarters is the actual number of points made by a team in a given quarter.
- g) Shooting percentages are obtained by dividing the total number of shots in a particular category into the number of particular shots made.

2014-2015 IHSA Request To Purchase Additional/Replacement State Series Awards

- 1.) To ensure an accurate order of replacement awards, please complete the form below.
- 2.) Please fax this completed form to Cheryl Lowery @ 309-663-7479.
- 3.) An invoice will be emailed to you. The awards company will not process duplicate orders without an invoice from IHSA and payment.
- 4.) Mail payment and invoice to A & M Products.

◆ **This form is to be used only, if your school is purchasing duplicate awards for the following reason (check one):**

Team Roster exceeds the number of allowed medallions per the T&C's

Coop School
 Dual Campus
 Lost
 Broken

Sport or Activity: _____ **Year:** _____ **Qty.:** _____ **Place:** _____

Classification

<input type="checkbox"/> 1A	<input type="checkbox"/> 5A	<input type="checkbox"/> Class A
<input type="checkbox"/> 2A	<input type="checkbox"/> 6A	<input type="checkbox"/> Class AA
<input type="checkbox"/> 3A	<input type="checkbox"/> 7A	
<input type="checkbox"/> 4A	<input type="checkbox"/> 8A	

Gender:

Girls Boys

Level of Competition:

Regional Sectional Super-Sectional State

Type of Award:

<input type="checkbox"/> Team Plaque <input type="checkbox"/> Team Trophy <input type="checkbox"/> Medal/Medallion Replacement Trophy Parts (check below): <input type="checkbox"/> Gold State Champion-top figure (#1) <input type="checkbox"/> Gold State Champion-side figure (#1) <input type="checkbox"/> Gold State Runner-up-top figure (#1) <input type="checkbox"/> Gold State Runner-up-side figure (#1)	<input type="checkbox"/> Gold State 3rd/4th Place-top figure (#1) <input type="checkbox"/> State 3 rd /4 th Place Gold-side figure (#2) <input type="checkbox"/> Gold Girls Soccer-side figure 3 rd /4 th (#3) <input type="checkbox"/> Gold Music Lyre-side figure 3rd (#3) <input type="checkbox"/> Badminton Gold shuttlecock and/or riser <input type="checkbox"/> Replacement Trophy Plate w/lasering <input type="checkbox"/> Bat, Tennis, Golf Club Replacement <input type="checkbox"/> Replacement Plate SF Trophy w/o lasering
--	---

Ind. Event Medals (indicate Event name): _____
 (ie: Pole Vault, Long Jump, Diving, 100-yd. Butterfly, Single, Doubles, 102lb., Speech: IE, etc.)

Name:
Email Address:
School:
Address:
City, ZIP Code:
Phone Number:
Fax Number:

Macintosh
 HD:Users:jackieiverson:Desktop:***Ma
 nual Files:Awards Forms:School
 Awards Form.doc



2014-2015 IHSA Request To Purchase Additional/Replacement State Series Awards

◆ **Tournament Managers/Hosts** who need to request duplicate awards due to ties at their tournament/meet must complete the form in the Online Manual for Managers and send it directly to the awards company— **Do Not Use the form above.**

◆ **Trophy Letters:** Schools who need replacement letters for trophies, please contact A & M Products direct at 815-875-2667.

Extra Medal Pricing for Schools:

<u>Qty:</u>	<u>Finish</u>	<u>State Medallion</u>	<u>Reg./Sect Medal</u>	<u>Shipping</u>
1 – 5	Goldtone (1 st)	\$4.45	\$3.95	\$6.50
	Nickel Silver (2 nd)	\$4.95	\$4.45	
	Bronze (3 rd)	\$4.60	\$4.15	
6 – 12	Goldtone (1 st)	\$4.20	\$3.70	\$7.00
	Nickel Silver (2 nd)	\$4.70	\$4.20	
	Bronze (3 rd)	\$4.35	\$3.85	
13 – 24	Goldtone (1 st)	\$3.95	\$3.45	\$7.50
	Nickel Silver (2 nd)	\$4.45	\$3.95	
	Bronze (3 rd)	\$4.10	\$3.65	
25 or more	Goldtone (1 st)	\$3.70	\$3.20	\$8.00
	Nickel Silver (2 nd)	\$4.20	\$3.70	
	Bronze (3 rd)	\$3.85	\$3.40	

Extra Plaque/Trophy Pricing for Schools (Shipping included):

Regional Champion Plaque	\$50.00
Sectional and Super-Sectional Champion Plaque	\$66.00
Third/Fourth place trophy	\$269.00
Champion/Runner-Up	\$297.00

Gold top figure Replacement Pricing (\$10.00 shipping per figure)

(\$61.00 for oxidized bronze finish pre 2008-09 school year, if available)

Gold State Champion-top figure (#1)	\$47.00
Gold State Champion-side figure (#1)	\$47.00
Gold State Runner-up-top figure (#1)	\$47.00
Gold State Runner-up-side figure (#1)	\$47.00
Gold State 3rd/4th Place-top figure (#1)	\$47.00

Gold side figures and plate replacement pricing

(\$40.00 for oxidized bronze finish pre 2008-09 school year, if available)

State 3 rd /4 th Place Gold-side figure (#2)	\$32.00, plus \$10.00 shipping
Girls Soccer – Gold-side figure 3 rd /4 th Place (#3)	\$30.00, plus \$10.00 shipping
Music Lyre – Gold-side figure 3 rd Place (#3)	\$24.50, plus \$10.00 shipping
Badminton Gold shuttlecock and/or riser	\$30.00, plus \$10.00 shipping
Repl. Trophy Plate w/lasering	\$30.00, plus \$10.00 shipping
Repl. Black Plate for SF Trophy w/o lasering	\$12.00, includes shipping
Bat, Tennis, Golf Club Replacement for All Figurine	\$16.00, includes shipping

Orders will be **processed upon Receipt of Full Payment.** Please allow three (3) weeks for delivery.
Thank you.

INSTRUCTIONS TO AND DUTIES OF THE ANNOUNCER FOR IHSA BOYS' AND GIRLS' BASKETBALL STATE SERIES GAMES

This document is provided to IHSA Boys' and Girls' Basketball State Series Managers for their use and is created from information provided by the National Federation of State High School Associations. Managers should make sure tournament announcers are given a copy of this prior to the regional, sectional, or super-sectional tournament for their review.

In a very real sense, the public address announcer at a high school event is a "Champion of Character". The public address announcer can influence the atmosphere of a contest by what is said and how it is said. The announcer who performs professionally promotes good sportsmanship by what he/she says and how he/she acts upon saying it. The announcer, like the scorer and timer, are extensions of the officiating crew, and by nature, are neutral parties to the contest. The announcer's role does not include "cheering the home team on" or otherwise inciting the crowd. Doing so is common at other levels of athletic events, but high school athletics is different because high school sports are educationally-based activities.

Announcer Responsibilities

1. The announcer shall be prohibited from making an announcement:
 - a. While the clock is running
 - b. While the clock is stopped and the ball is live (such as during a free throw, throw in, etc.)
2. Announcements or comments shall be made during those times when there is stoppage of the clock and the ball is not live, such as time outs, between quarters, or during pre-game, half-time, or post-game.
3. Unless there is an emergency, the announcer shall be prohibited from interrupting the game through the use of the microphone.
4. The announcer is allowed to announce basic information that does not potentially affect the play in general, the players, the coaches, or the officials. The announcer's information is not official information and, if announced, could mislead fans and others.

Examples of Allowable Comments

- Player who scored (quick notification without extreme emphasis)
- Player charged with a foul
- Player attempting a free throw
- Team granted a time out
- Length of time out (30 seconds or 60 seconds)
- Player entering game
- Team rosters/starting lineup

Examples of Unapproved Comments

- Number of points player scored
- Number of fouls on player
- Number of team fouls
- Number of team times outs or number of time outs remaining
- Type of foul or violation
- Emphatic 2 or 3 point goal

INSTRUCTIONS TO AND DUTIES OF THE SCORER FOR BASKETBALL GAMES

RULES COVERAGE:

Rule 1-17: The scorer's location at the scorer's and timer's table must be clearly marked with an "X."

Rule 2-1-3: It is recommended that the official scorer and timer be seated next to each other.

Rule 2-4-3: The referee designates the official scorebook and the official scorer.

Rule 2-11: The duties and responsibilities of the official scorer are indicated. In case of doubt, signal the floor official as soon as conditions permit to verify the official's decision.

Rule 2-11-12: The official scorer is required to wear a black and white vertically striped garment.

RESPONSIBILITY:

The scorer's responsibility is so great that floor officials must establish the closest cooperation and understanding with them. The scorer must be accurate.

EQUIPMENT:

Scorebook, pencils, possession arrow and signaling device with sound different from that of the timer. The scorebook must be available for inspection at the table from 10 minutes prior to game time until the referee has approved the final score.

BEFORE THE GAME:

1. Ten minutes before scheduled game time, the scorer shall be supplied with each team's roster and numbers.
2. Ten minutes before scheduled game starting time, the scorer shall be supplied with the starting lineup.
3. Notify the referee if either list is not submitted on time or is altered after time specified.
4. If there are discrepancies, notify the referee before the ball is tossed.
5. Have coach sign that lineup is correct.

DURING INTERMISSIONS:

1. Either the official scorer or a delegated assistant must be at the scorer's table with the official scorebook at all times.
2. Verify the lineup after all intermissions and notify either floor official if a player, who has not reported, has entered the court.

DURING THE COURSE OF THE GAME:

1. The nonofficial scorers should check each entry with the official scorebook.
2. The scorers should:
 - a. Announce to each other and record the total running score.
 - b. Announce the name and number of the player who scores.
 - c. Verify the scoreboard score.
 - d. Compare the summary of individual scores with the total running score at the end of each half.
 - e. Exchange the name and number of the player committing a foul and indicate the total fouls charged to the player.
 - f. Be responsible for the alternating-possession arrow.
 - g. Record warnings reported by an official.
3. In case of controversy, the record of the official scorebook is accepted unless the referee has knowledge which permits him or her to rule otherwise.

SCORING: (Use the following recommended symbols)

1. P for personal foul, followed by proper numeral indicating number of personal fouls charged to player as P¹, P², etc., or cross out appropriate number.
2. T for technical foul (direct or indirect on coach).
3. Successful field goal: figure 2 or 3.
4. Free-throw attempt: ○
5. Successful free throw: ⊗
6. Two or three free throws awarded: ○ ○ ○

7. First of one-and-one: ○
First made, bonus awarded: ⊗ ○ ○
Bonus free throw made: ⊗ ○ ○

8. Record the number of charged time-outs (who/when) for each team.
9. Check the scoreboard often and have the progressive team totals available at all times. Points scored in the wrong basket are never credited to a player, but are credited to the team in a footnote. Points awarded for basket interference or goaltending by the defense are credited to the shooter. When a live ball goes in the basket, the last player who touched the ball causes it to go there.

NOTIFY THE NEARER OFFICIAL WHEN:

1. The bonus penalty is in effect for the seventh, eighth and ninth team foul in each half. The bonus display indicates a second free throw is awarded for all common fouls (other than player-control) if the first free throw is successful. The proper bonus panel, such as (H for home and V for visitor) shall be displayed after the penalty for the sixth team foul has been administered. Another method is to activate a light or device nearest the basket of the team which is to receive the bonus.
2. The tenth team foul occurs each half. Thereafter, the bonus (second free throw) is awarded for a common foul (except player-control) whether or not the first is successful.
3. Any player is charged with his or her fifth foul (personal or technical), the second technical foul is charged to any team member, bench personnel, directly to the head coach or the third technical foul is charged to the head coach.
4. Either team has been granted its allotted charged time-outs or an excess time-out.
5. The ball is dead or in control of offending players team if:
 - a. Player has not reported.
 - b. Player's number changed.
 - c. Player is illegally in game.
6. The ball is dead, if there is a score dispute or doubt about an official's decision.
7. Any player enters while wearing an illegal number.
8. The ball is dead and the clock is stopped or running, if the coach requests that a correctable error as in 2-10, or a timing, scoring or alternating-possession mistake be prevented or rectified.

SUBSTITUTIONS:

1. A substitution may be made when the ball is dead and time is out. A player who has been withdrawn may not re-enter before the next opportunity to substitute after the clock has been started properly following the player's replacement.
2. A substitute who is entitled and ready to enter must report to the official scorer. However, substitutions between halves shall be made to the official scorer by the substitute(s) or a team representative prior to the 15-second warning. When substitutes are not properly reported, the players in the game at the conclusion of the second quarter shall begin play in the third quarter.
3. Following a time-out or intermission, the substitute must report or be in a position to report prior to the warning signal.
4. A substitute may enter the court only when beckoned and must do so at once, except between quarters and during a time-out.
5. If a substitute reports to enter for a designated jumper or free thrower, the substitute may not enter until the next dead ball and time is out.
6. A substitute may not be beckoned, if multiple free throws are awarded, until the last throw is to be attempted or the final throw is successful (unless a player has been directed to leave the game by an official).
7. A substitute may replace a designated starter in case of illness or injury or to attempt a technical-foul free throw.

It is not permissible for a substitute to replace a designated jumper, or a free thrower when the free throw is for a personal foul, unless such jumper or free thrower is disqualified or injured. The scorer should not signal after the free thrower or thrower has been handed the ball or the ball is at the disposal of such player or team or until the official has completed reporting a foul.

2014

INSTRUCTIONS TO AND DUTIES OF THE TIMER FOR BASKETBALL GAMES

RULES COVERAGE:

Rule 2-4-2: The referee shall designate the official timepiece and its operator.

Rule 2-12: Duties and responsibilities of the timer are indicated. An efficient timer will carefully study these sections and become thoroughly familiar with all their responsibilities. The timer shall sound a warning signal 15 seconds before the expiration of an intermission, a time-out (60- or 30-second) and the 20-second interval to replace a disqualified or injured player, or a player directed to leave the game. The timer shall also signal when the time has expired for an intermission, a charged time-out or a replacement interval.

EQUIPMENT:

Electric clock timer and one stopwatch, or a table-clock timer and one or two stopwatches. A gong, loud siren or electric air horn to signal the end of playing time. When present, a red/LED light is permitted to end a quarter or extra period; otherwise, the audible signal ends the quarter or extra period.

BEFORE THE GAME:

1. The official timer should ascertain the game starting time and suggest that the referee and coaches synchronize their watches.
2. Review the official signals for starting the clock, time-out, a foul or violation.
3. Notify the scorer 10 minutes prior to the starting time.

TIMING REGULATIONS:

1. Playing time shall be:
 - a. For teams of high school age — four quarters of eight minutes each with intermissions of one minute after the first and third quarters and 10 minutes between halves. Halftime may be extended to a maximum of 15 minutes upon proper notification.
 - b. For teams younger than in (a) — four quarters of six minutes each with intermissions same as for (a).
2. Overtime Play:
 - a. If the score is tied at the end of the second half, play shall continue without change of baskets for one or more extra periods, with a one-minute intermission before each.
 - b. The length of each extra period shall be four minutes (or half the time of a regulation quarter for non-varsity contests).
 - c. As many such extra periods as are needed to break the tie shall be played. Game ends, if, at end of any extra period, the score is not tied.
 - d. Extra periods are an extension of the fourth quarter.
3. A time-out charged to a team is of either 60-seconds or 30-second duration unless both teams are ready to resume play sooner.
4. No time-out is charged to a team when:
 - a. The floor official grants a player's request because of displaced eyeglasses or lens.
 - b. A correctable error as in 2-10, or a timing, scoring or alternating possession mistake has been prevented or rectified.
5. The sounding of the scorer's signal or game horn does not cause the game timepiece to be stopped.

START THE OFFICIAL TIMEPIECE WHEN:

1. A tossed ball is legally tapped when play is started by a jump.
2. The ball touches a player on the court during a throw-in (if clock has been stopped).
3. An official signals "start the clock." If he or she neglects to do so, the official timepiece should be started unless an official specifically signals that it should not be started.
4. The ball touches or is touched by a player on the court provided the ball is to remain live if the free throw is missed. In these cases, the official will give the start-the-clock signal, but if he or she neglects to do so, the official timepiece should be started when it is apparent the ball touches a player and is to remain live.

STOP THE OFFICIAL TIMEPIECE WHEN:

1. Any period ends.
2. An official gives a time-out signal. The official will order time-out when:
 - a. A foul is called by holding hand with fingers closed at arm's length above head.
 - b. A jump/held ball is declared by giving the jump-ball signal (holding thumbs up at shoulder height away from body and motioning upward with both arms extended).
 - c. A violation occurs by giving the time-out signal (holding hand with fingers extended at arm's length above head) after which the proper violation signal is given.
 - d. There is to be a charged time-out, or an official's time-out for a technical foul, or other stoppage indicated by a floor official who holds a hand at arm's length above the head with fingers extended.

NEAR THE END OF PLAYING TIME:

1. If a watch is being used as the official timepiece, place it so that the timer may see it and the ball. The watch must be stopped the instant the signal ending the game is sounded.
2. When a timing device other than a watch is the official timepiece, the timer must assist in determining the position of the ball when time expires.
3. Some timers, in order to avoid misunderstanding concerning the position of the ball when time expires, have one person watch the official timepiece and count aloud 10 - 9 - 8 - 7, etc., while another person watches the ball and notes its position at the exact moment time expires.
4. If a quarter or extra period ends and:
 - a. The timer has been unable to make an official hear the signal, the timer must immediately notify the official.
 - b. The timing signal fails or is not heard by an official, the timer must be prepared to advise the referee as to whether the ball was in flight when time expired, or whether a foul occurred before or after the period had ended.
 - c. The timing signal is not heard by the officials, testimony of the timer may determine whether a score shall count or a foul shall be charged, unless the referee has information which would alter the situation.

2014