

2009-10 Solo/Ensemble Music Contest Terms and Conditions

In accordance with Section 1.450 of the IHSA Constitution, the Board of Directors has approved the Terms and Conditions governing the 2009-2010 IHSA Music Solo /Ensemble Tournament Series.

I. SCHOOL CLASSIFICATION

A. Classes:

Member schools shall be classified for participation in the contests upon the basis of the actual high school student enrollment figures reported to the State Board of Education on the Fall Housing Report on September 30, 2008, as follows:

Class AA	1601 or over
Class A	801 to 1600
Class B	351 to 800
Class C	191 to 350
Class D	1 to 190

B. Participation:

All soloists and ensembles representing member schools shall participate in the contest only in their respective school's classification, except the school may participate in a higher (not lower) classification with the permission of the Executive Director of the IHSA. The request to participate in a higher classification is available online at IHSA.org and is due back to the IHSA office by Sept. 1.

II. DATE AND SITES

A. Date: State Solo and Ensemble Contest will be held on the Saturday of week 35 of the IHSA Standardized Calendar (Saturday, March 6, 2010).

B. Sites: Contest sites will be posted on the IHSA website.

III. ON-LINE ENTRIES, LATE ENTRIES, WITHDRAWAL PROCEDURES, ELIGIBILITY, AND ENTRY INFORMATION

The Policy for Original Entry Deadlines, Late Entries, and Late Withdrawals shall be the policies and procedures regarding entry for all IHSA-sponsored sport/activities included in the 2009-2010 Policies and Procedures.

A. On-line Entries

All member schools must enter their school into the state series competition through the IHSA Schools Center on the IHSA Website at www.ihsa.org. The

deadline for entry is November 1, 2009. The 2009-10 Entry Policies and Procedures outlining the online entry procedures for all IHSA-sponsored tournaments can be found in the Schools Center on the IHSA website.

B. Late Entries

Any attempt to enter a sport or activity on-line after the established deadlines will be denied. Schools that wish to enter after the deadline will be considered late. To be considered for late entry, the Principal/Official Representative must contact the IHSA administrative officer in charge of that sport or activity. The penalty for late entry shall be a payment of \$100.00 for that sport/activity by the school.

C. Breach of Contract By-law 6.041 (Withdrawal Procedure)

To withdraw without penalty, the principal must notify the IHSA Office, in writing, of the school's withdrawal, on or before **January 1, 2010**.

If a school withdraws after January 1, 2010, but prior to payment of event fees to the contest manager it will incur a \$100 penalty.

Failure to send any entry information and/or fees to the contest manager and/or non-participation on contest day after the school submits the entry to the IHSA (and does not withdraw through the official procedures) is viewed the same as withdrawal from Solo/Ensemble contest and penalized as above.

Withdrawal after payment of event fees to the contest manager will result in forfeiture of all fees paid.

D. Eligibility

1. School Eligibility

All member schools in good standing may enter soloists and/or ensembles in Music Solo/Ensemble under the provisions of IHSA By-law 4.071. The principal is the official representative of his/her school in all interscholastic activities, and the responsibility for seeing that all students from his/her school entered in Music contests are eligible under the rules shall rest with the principal. All correspondence with the IHSA Office must be conducted through the principal. **Entry into the contests may be denied to any school which, since last year's contests, has participated in an unsanctioned interscholastic music activity.**

2. High School Students Eligible:

To represent a school in the statewide music contests, students must conform to the IHSA Activities By-laws found in the IHSA Handbook and on page 2 of this Rules Book. Students shall be entered based on the recommendation of the music director.

NOTE: Be sure to apply the provisions of By-law 4.022, relative to academic standing.

3. Grade and Junior High School Students Eligible:

Any student of a grade school or a junior high school in the State of Illinois shall be eligible to participate with the instrumental and/or vocal ensemble representing a Class B, C or D member school, provided, however, that the principal of the competing member school shall be responsible for the good conduct of such grade and junior high school students during a contest; and provided further, that the principal of said member school shall certify that, at the time of registration for said participation, said student:

a. Is a bona fide student of a grade school or a junior high school located in the district of the member school.

b. Has a passing grade in at least three fourths (3/4) of his/her academic subjects.

NOTE: No grade school or junior high school student may compete as a soloist. Instrumental and vocal ensembles composed in part of grade or junior high school students may compete, if these students are members of their respective high school organizations.

4. Non-Student Participants:

Non-students may only be used as accompanists. (See Art. VIII-D).

E. Entry Information (List of Participants):

1. Online Entry System (List of Participants)

Schools are required to complete the Music Solo and Ensemble List of Participants on-line (This is in place of downloading the Music program). Log on to www.ihsa.org and click on the Schools Center link. Enter your school's four-digit School ID number and password which you must obtain from your Principal or Athletic/Activities Director. On the next page, go to the "Sports and Activity Tracker" area, find the row that lists the correct tournament, and click on the "LOP (List of Participants)" link under the "Required Data Forms" heading. Please follow the

instructions shown on the screen as you fill in the necessary information. **The deadline for entering the “List of Participants” for Music Solo and Ensemble is January 22, 2010.**

After completing the “List of Participants” online, print out a copy of the completed entry form for your records. It is no longer necessary to e-mail your information to your site manager. The information will be placed in a database and sent to the manager. **Your event fees should be made payable to the host school and mailed to the manager of the contest to which the school has been assigned no later than January 22, 2010.** If you experience any problems, please call the IHSA Office at 309-663-6377 and ask for Carol Carr.

2. Limitation on Entries

a. Solos and Ensembles:

1. A student shall not participate in more than a total of six (6) solo and ensemble events combined, and not more than three (3) of these may be either band, orchestra or vocal. (Choirs and madrigal groups are not considered as ensembles for this purpose.)

2. A student shall not participate as a soloist in more than one event with the same instrument.

3. A student shall be permitted to participate in a maximum of two instrumental and two vocal ensemble events not counting choirs.

b. Choirs:

An individual student may participate in any of the school’s choirs or madrigal group entries. Choirs and madrigal groups are not considered as ensembles in relation to individual entry limitations. A school may enter one (1) brass choir, one (1) flute choir, one (1) clarinet choir, one (1) percussion choir, one (1) handbell choir, one (1) woodwind choir, one (1) madrigal group, one (1) string choir, and one (1) chamber choir. A student could participate in each of these without violating entry limitations.

c. Substitutions:

Substitutions in the personnel of ensembles may be made only if the request for substitution is made to the local manager not later than the time the school registers on the day of the contest. Substitutions or changes for soloists may be made only if the request reaches the local manager at least two weeks prior to the contest. If a request is received later, it shall be denied.

d. Changes in Entries:

Changes in entries may only be accepted at the discretion of the contest manager.

e. Violations and Penalties. (See Art. VIII-E).

IV. HOST FINANCIAL ARRANGEMENTS

A. Contest Event Fees:

1. Solo: \$8.00 per entry.
2. Ensemble: \$15.00 per group entry except madrigal groups, chamber choirs, woodwind, flute, brass, percussion and string choirs for which the entry fee is \$20.00. **Contest Event Fees shall be made payable to the host school and mailed to the manager of the contest to which the school has been assigned no later than January 22, 2010.**

B. Penalty Fees:

Solo and Ensemble entries and event fees shall be mailed to the manager of the contest to which the school has been assigned no later than January 22, 2010. Information that is not complete may not be accepted (discretion of the manager). **Following the January 22nd deadline, changes in entries may be made only in accordance with Art. III-E-2-d.**

Penalty Fees:

1. Entries received 2 days late - \$50.00 flat fee

2. Entries received 3 days late - \$100.00 flat fee

3. Entries received more than 3 days late may not be accepted by the host manager (discretion of the manager)- \$100.00 flat fee will apply

a. Late Penalty Fees shall be paid directly to the host school and mailed to the host school manager. Any individual solo or ensemble withdrawal(s) after the event fees have been paid to the contest manager (Jan. 22, 2010) will result in forfeiture of all fees paid.

b. To withdraw all entries from contest without penalty, the principal (official IHSA school representative) must notify the IHSA office in writing, on or before January 1, 2010.

c. To withdraw all entries from contest after January 1, 2010 and prior to payment of event fees to the contest manager’s school, the principal (official IHSA school representative) must notify the IHSA office in writing and will be assessed the \$100.00 late withdrawal fee.

d. Failure to send any entry information to the contest manager’s school and or non-participation on contest day after the school submits the original entry to the IHSA (and does not withdraw through official procedures) is viewed the same as withdrawal from the Solo/Ensemble contest and shall be penalized as described above. The school will be responsible for all penalty fees due to breach of contract. (Late withdrawal fee of \$100.00 and all original event entry fees of \$8.00 per solo and \$15/\$20 per ensemble).

C. Judges’ Fees:

Judges for the Solo/Ensemble contest shall be compensated on the following scale:

BASE FEE-\$125.00 for 5 hours of actual judging.

SECONDARY FEE-\$20.00 per hour for each hour of judging beyond 5 hours at any given contest.

PER DIEM-\$25.00 for meals and transportation.

V. TOURNAMENT ASSIGNMENTS

Assignments for Music Solo/Ensemble can be found on-line at www.ihsa.org in November. Assignments will be made on the basis of location and equality in the number of entries.

VI. TOURNAMENT STRUCTURE AND TIME SCHEDULES

A. Responsibility of Local Manager:

1. In all cases in which a member school is selected as a contest site, the principal of the high school shall automatically assume entire responsibility for the details of the contest under the general directions of the IHSA Board of Directors and the Executive Director of the Association. The principal may delegate the authority to manage the contest to another staff member. In case the site is not located at a member school, then the IHSA Board of Directors shall appoint a local manager with like responsibilities.

2. The manager of each contest shall appoint a Contest Committee. The committee shall be composed of not less than three directors of music activities located within the nearby area of the contest site and should include at least one director of each of the three main contest activities, namely, band, orchestra and chorus. Names of the committee members shall be made known to the directors of participating schools at each contest prior to the date of the contest. The Contest Committee:

a. Is required to assist the contest manager in the selection of adjudicators for the contest;

b. Shall advise the contest manager in resolving any question of rules interpretation or any other problem on the day of the contest;

c. Shall assist the contest manager in any other way he/she determines.

3. Unusual situations: The local manager shall have authority to take proper action in the case of any unusual situations arising during the contests. However, no part of these Terms and Conditions may be set aside. In all cases involving an interpretation not specifically covered by the rules, the contest manager shall consult with the Contest Committee before the announcement of results or the presentation of awards.

4. Programs: The local manager shall, with the advice of the Contest Committee, arrange, prepare and duplicate a program and time schedule for his/her contest. Insofar as is possible, the manager will maintain this schedule. However, if because of cancellations, conflicts, or for other reasons the program runs ahead of itself, he/she may permit or request available contestants or groups to appear in advance of their program time. He/she shall not require them to appear earlier.

5. Manager's Information: The IHSA Office will post any pertinent instructions and helpful management information on the Music menu page at www.ihsa.org.

6. Directors' Meetings: The local manager shall schedule a time for a meeting of directors from participating schools. At this meeting, a recorder shall be appointed to prepare a record of the comments and recommendations for improvement in the contest program for submission to the IHSA office by the manager following the contest. A questionnaire or other method of collecting director's comments may be implemented as an alternative to the meeting.

B. Responsibility of Individual School: The principal is the official representative of his/her school in all interscholastic activities and the responsibility for seeing that all students from his/her school entered in the music contests are eligible under the rules shall rest with him/her. All correspondence with the IHSA Office should be conducted through the principal.

In each contest in which his/her school is represented, the principal shall have present an adult, preferably a member of the faculty, who shall supervise and be responsible for the conduct of the participants and other persons from the school. Failure to comply with this provision shall result in disqualification of its contestants.

VII. ADVANCEMENT OF WINNERS

There is no advancement of winners in the Music Solo/Ensemble Contest.

Ratings:

Ensembles and solos in the respective music events shall be rated in five divisions as follows:

- | | |
|--------------|-------------|
| Division I | Division IV |
| Division II | Division V |
| Division III | |

VIII. MUSIC SOLO/ENSEMBLE CONTEST RULES

A. Solo Events

1. Entries:

A school may enter any number or combination of events within the following maximum for sweepstakes:

Vocal	20
String Instruments	20
Wind and/or Percussion Instruments	35
*Total Maximum Solo Entries	75

Note 1: Schools may enter students as a "sweepstakes entry", "non-sweepstakes entry", or "comments only entry". All entries must be marked appropriately.

Note 2: If a school enters the total maximum of twenty (20) vocal, twenty (20) string and thirty-five (35) wind/percussion solos, it will have utilized its entire maximum of seventy-five (75) entry positions.

Note 3: Local Managers shall accept and/or schools may enter "non-sweepstakes" or "comments only" entries in excess of the maximum number of seventy-five (75) solo entries per school as space and time allows.

2. Entry Information:

Entry information created in the IHSA electronic entry system must be completed in full and submitted to the contest manager for each entry by January 22, 2010. INCOMPLETE OR IMPROPERLY COMPLETED INFORMATION MAY NOT BE ACCEPTED. (discretion of the manager)

3. Approved Solo Events.

No.	Event
Woodwind	
201.	Piccolo
202.	Flute
203.	Oboe
204.	English Horn
205.	Bassoon
206.	E-Flat Clarinet
207.	B-Flat Clarinet
208.	Alto Clarinet
209.	Bass Clarinet
210.	Contra Bass Clarinet
211.	B-Flat Soprano Saxophone
212.	E-Flat Alto Saxophone
213.	B-Flat Tenor Saxophone
214.	Baritone Saxophone

Brass

215.	Cornet, Trumpet, or Flugelhorn
216.	French Horn
217.	Trombone
218.	Baritone
219.	Tuba

Percussion

224.	Xylophone or Marimba or Vibra Harp
225.	Orchestra Bells or Bell Lyra (Glockenspiel)
226.	Snare Drums
227.	Tympani (accompanied or unaccompanied)
228.	Multiple Percussion

String

229.	Piano
230.	Violin
231.	Viola

232.	Violoncello
233.	String Bass
234.	Harp
235.	Acoustic/Classical Guitar

Vocal

240.	Female Voice
241.	Male Voice

NOTE: Local managers shall not accept and/or schools may not enter for appearance, adjudication or criticism any solo not found in this list of approved solo events.

4. Scores:

Each soloist shall supply the judge with one score of his/her selection, with the measures numbered. Failure to supply such a score shall result in the contestant's rating being automatically lowered by one step.

Photocopied music may be provided to judges only in an "emergency." "Emergency" shall be defined as cases in which:

- music is out of print with no new score available; and/or
- purchased music copies are backordered.

Written evidence, in the form of a school purchase order and/or a written statement from the supplier, shall be required to document the "emergency." The penalty for violation shall be reduction of rating by one step.

5. Medals:

Soloists shall not appear for adjudication wearing medals or ribbons of any type. Contest room chairpersons are instructed to request the removal of all medals or ribbons before performers are permitted to begin their numbers.

6. Repetition:

A soloist shall not perform a selection that he/she used in any event in any previous year's contest.

7. Time:

The playing or singing time for the prepared selection of a soloist shall not exceed **six minutes** (including time needed for on-stage tuning.) Time schedules should be set up at ten-minute intervals to allow for the performance of the required scales. See Article VIII-E-1-d and VIII-E-2-k for penalty. Solo/Ensemble events shall consist of a minimum of **64 published measures** or a performance time of at least **90 seconds**. The performance of two short selections is allowed.

8. Required Scales:

Vocal Scales: All vocal soloists will be required to perform five vocal tonal skills. The one major scale, one minor scale and three triads will be performed from memory. The student will select the starting pitch. (See document on the music menu page at IHSA.org for detailed instructions).

VOCAL TONAL SKILLS

PROCEDURES FOR SOLO CONTEST

Adjudication Information

5 Points Maximum Possible (1 point per scale or triad)

Tenth of points may be used - Example: 4.8, 3.7, etc.

a. Each student will sing one major scale and one minor scale. The student will select the starting pitch.

The minor scale will be selected from any one of the natural, harmonic or melodic forms. The student is responsible for all three minor forms though ONLY ONE will be performed for the judge. The form will be selected by the judge. The student will select the starting pitch.

The scales will be sung one octave up and down with the top note sung only once.

b. Each student will sing a root position major triad beginning on the pitch of their choice.

c. Each student will sing two (2) of the other three root position triads (minor, diminished, augmented), selected by the judge. The student will select the starting pitch.

d) Numbers, solfege, or a neutral syllable may be used. Humming is not allowed.

e) All triads must be sung up and down.

Required Vocal Tonal Skills Summary

1. Major scale
2. Minor scale (natural, harmonic or melodic) – selected by the judge
3. Root position major triad
4. Root position triad (minor, diminished, augmented) - selected by the judge

5. Root position triad (minor, diminished, augmented) -selected by the judge

All triads must be sung up and down.

5 Points Maximum Possible (1 point per scale or triad)

Tenth of points may be used - Example: 4.8, 3.7, etc.

***Students will select the starting pitch for all vocal tonal skills**

Instrumental Scales: All wind and mallet instrument soloists will be required to play two of the following scales: Concert C, F, B Flat, E Flat, A Flat, D Flat and G Major, and a chromatic. Scales for string instrument soloists will be chosen from Concert C, G, D, A, E and F, but no chromatic scale. All string soloists will play two scales, three octaves in range, except for String Bass, which will play two octaves. The judge will select the scales to be played. The scales listed, including the chromatic scale, will be called for in concert

pitch and will be played two octaves, both up and down. This means that each player who plays a transposing instrument will have to transpose the given scale. They should be played at a tempo of not less than quarter note = 120. All scales for wind instruments shall be played two octaves where applicable but one octave where range restricts. Scales and the chromatic will be played from memory. Note, however, that instrumental solos themselves need not be memorized.

Flute/Piccolo:

Chromatic G to G

Oboe:

Chromatic C to C

English Horn:

Chromatic C to C

Bassoon:

Chromatic F to F

E Flat Clarinet:

Chromatic A Flat to A Flat

E Flat Alto Clarinet:

Chromatic A Flat to A Flat

B Flat Clarinet:

Chromatic E Flat to E Flat

B Flat Bass Clarinet:

Chromatic E Flat to E Flat

E Flat Alto Contra Bass Clarinet:

Chromatic A Flat to A Flat

B Flat Contra Bass Clarinet:

Chromatic E Flat to E Flat

E Flat Alto Saxophone:

Chromatic F to F

E Flat Baritone Saxophone:

Chromatic F to F

Soprano Saxophone:

Chromatic B Flat to B Flat

B Flat Tenor Saxophone:

Chromatic B Flat to B Flat

Cornet, Treble Clef Baritone:

Chromatic F to F

French Horn:

Chromatic C to C

Trombone, Bass Clef Baritone:

Chromatic F to F

B Flat Tuba:

Chromatic F to F

E Flat Tuba:

Chromatic B Flat to B Flat

Vibraharp, Xylophone, Marimba:

Chromatic C to C, To be played with two (2) hands

Glockenspiel Bells:

Chromatic C to C, To be played with two (2) hands

Tympani:

Play a one octave scale in F major in half notes up and down.

The judge will ask the soloist to tune two intervals from the following: C to D, A Flat to E Flat, G to C, F to C, B Flat to F, D Flat to A Flat. The low pitch will be given and the soloist will then tune the interval.

Snare Drum, Multiple Percussion: See 12. below.

Stringed Instruments:

Concert C, G, D, A, E, F.

To be played in three octaves except the stringed bass which will play two. No Chromatic Scale required.

9. Acoustic/Classic Guitar:

All Acoustic/Classic Guitar soloists will be required to play the following scales: 1st Position Major/minor, two octaves: C/Am; G/em; A/F#m; E Major in 1st, 4th, 9th positions - F Major in 1st, 5th, 10th positions.

Chromatic scale E to A in 1st position - two octave movable in A - A; B - B; or C - C.

Solo material should be classical in nature. The following are examples that would be considered appropriate for acoustic/classic guitar solos: Bouree' from the Bach Cello Suite; Paganini: Twenty-Fourth Variation; Stairway to Heaven; Fernano Sor's Preludes, Etudes, even up to the Grand Solo; Mauro Guiliani's Preludes and Etudes; Ferdinand Carulli Etudes, Waltzes and Suite excerpts.

10. Piano Solo:

All piano soloists entered by a participating school must be active members of one of the school's music groups (band, orchestra, chorus or an ensemble using integral piano). Piano soloists will be required also to play three of the following scales: Concert G, D, A, E, B or F, two octaves, with both hands. Piano solos may not be accompanied. Piano solos are not required to be memorized.

11. Vocal Solo:

All vocal soloists will be required to perform their selections from memory. Vocal performances may be sung in any language.

12. Snare Drum and Multiple Percussion Solo:

In addition to a prepared solo, all percussion (non-mallet) soloists must play one rudiment from each group per the judges selection:

Roll Rudiments – Play one

- a. (4) Multiple bounce roll

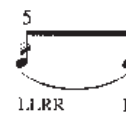
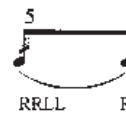


- b. (6) Double stroke roll



RRLRLRL

- c. (7) Five stroke roll



- d. (10) Nine stroke roll



Diddle Rudiments – Play one

e. (16) Single Paradiddle

R L R R L R L L

f. (19) Single Paradiddle – diddle

R L R R L L R L R R L L

Flam Rudiment – Play one

g. (20) Flam

L R R L

h. (23) Flamacue

L R L R L R L R

Drag Rudiments – Play one

i. (31) Drag

L L R R R L

j. (38) Single Ratamacue

L L R L R L R R L R L R

Note: The numbers listed next to the rudiments have been taken from the Percussive Arts Society recognized 40 rudiments.

All rudiments must be played at a speed not less than quarter note = 120. They shall be played crescendo and decrescendo and not open to closed. Each rudiment should be played in 15 seconds or less. The judge shall select the rudiments to be played by the contestant. All rolls should be played double stroke.

Combinations of brushes and sticks, also snare drum and tom-toms may be used. Trap outfits are permissible only when called for by the score.

13. Determination of Ratings:

To determine the rating for each solo performance, contest judges shall utilize the adjudication form published by the National Federation of State High School Associations and distributed by the IHSA Office to contest managers. *Appropriateness*

of literature is a major consideration. The solo/ensemble contest should be considered a formal recital. Selections with vulgar, foul and inappropriate language will be disqualified from the Music Contest.

14. Substitutions. (See Art. III-E-2-c.)

15. Selections. (See Art. VIII-C)

16. Limitations. (See Art. III-E-2)

17. Accompaniment. (See Art. VIII-D)

18. Violations and Penalties. (See Art. VIII-E)

B. ENSEMBLE EVENTS

1. Definition:

Instrumental ensembles shall consist of from two to eight players, except Clarinet, Flute, Woodwind, Brass Percussion and String choirs.

Ensembles consisting of two major performers, with or without piano accompaniment shall appear as Duets. Three players including piano or harp as an integral part of the score (rather than an accompaniment) shall appear in the proper Trio events, with the added permission that repertoire in these events may include double concertos with piano reduction.

Vocal ensembles shall consist of from two to nine singers, except Event No. 153 (Madrigal Groups) and Event No. 154 (Chamber Choir). Multiple voices are permitted on any part.

2. Entries:

a. Instrumental: In instrumental ensembles a school may enter any number or combination of events within the following maximums:

Brass	9 ensembles
Percussion	4 ensembles
String	9 ensembles
Woodwind	9 ensembles
Piano Duets	4
Instrumental Choirs	7 ensembles

(1 each: Brass, Flute, Woodwind, Clarinet, Percussion, Bell Choir, String)

Total Maximum Instrumental Ensemble Entries: 42 ensembles

NOTE 1: Schools may enter students as a “sweepstakes entry”, “non-sweepstakes entry”, or “comments only entry”. All entries must be marked appropriately.

NOTE 2: Local Managers shall accept and/or schools may enter “non sweepstakes” or “comments only” entries in excess of the maximum number of sixty-four (64) ensemble entries per school as space and time allows.

NOTE 3: Entries in “Mixed” Ensembles must be counted as an entry under the category of any one of the instruments in the ensemble. For example, event No. 3 must be entered either as a Brass or a Woodwind Ensemble. Designation is at the director’s

discretion.

1) Designation of instrumental entries: Directors are responsible to properly enter their ensemble groups. The local contest manager has no responsibility whatsoever for checking instrumentation to see that entries are properly classified. Directors shall indicate plainly the Event Number and the Classification. Local managers shall not accept and schools may not enter for appearance, adjudication or criticism any ensemble not found, or provided for, in the schedule of Approved Ensemble Events. If an adjudicator encounters approved but inaccurate or misclassified entries, he/she is to proceed as indicated in Art. VIII-E-3.

2) Instrument eligibility: For purposes of ensemble eligibility, B-flat trumpets, cornets and flugelhorns are considered as like instruments. Mellophones, concert horns, altos, etc., are not approved for ensemble use. The bass drum is not considered a major membrane in ensembles. Marimbas (xylophones with resonators) of differing size or model are not considered as different instruments, despite either range or tessitura. Vibraharp are counted as differing or different from marimbas.

3) Memorization: There is no memorization requirement for instrumental ensembles; they may be performed with the use of music.

b. Vocal: A school shall be limited to twenty (20) vocal ensembles. Maximum entries in Events Nos. 150-152 = total of twenty (20). In addition, a school may enter one (1) Madrigal Group (Event No. 153) and one Chamber Choir (Event No. 154). Total maximum vocal ensemble entries = twenty-two (22).

Memorization: All vocal ensembles shall be performed from memory. Vocal performances may be sung in any language.

c. Total Ensemble Entries: Total maximum ensemble entries (Instrumental and Vocal) = sixty-four (64).

d. Piano: Piano duets are acceptable if played on one piano. All piano duet participants must be active members of one of the school’s music groups.

3. Judges’ Scores:

Directors shall supply the judge with one conductor’s score of the ensemble’s selection, with measures numbered.

Photocopies of copyrighted music may be provided to judges only in an “emergency”. “Emergency” shall be defined as cases in which:

- a. music is out of print with no new score available; or
- b. purchased music copies are backordered.

Written evidence, in the form of a school purchase order and/or a written statement from the supplier, shall be required

to document the “emergency”. The penalty for violation shall be reduction of rating by one step.

Failure to provide a score shall result in the ensemble’s rating being automatically lowered by one step. If a full score is not available, one must be written by the school. Copies of parts are not acceptable.

4. Time:

The playing or singing time of an ensemble performance shall not exceed six (6) minutes (including time needed for on-stage tuning). See Article VIII-E-1-d and Article VIII-E-2-k for penalty.

5. Medals:

Ensemble performers shall not appear for adjudication wearing medals or ribbons of any type. Contest chairpersons are instructed to request the removal of all medals or ribbons before performers are permitted to begin their numbers.

6. Repetition:

A student may not play or sing a selection he/she has previously used in IHSA music contests. If a school enters two ensembles under the same event number, they may not present the same selections.

7. Direction:

Ensembles shall perform without direction by either an adult or a student director, except that high school student directors are permitted for Event Nos. 8, 9, 10, 16, 18, 19, 22 and 23. If high school student directors are utilized in Events 8, 9, 10, 16, 18, 19, 22 or 23, their conducting technique will be considered in the evaluation of the performance.

8. Approved Ensemble Events

Local managers shall not accept and schools may not enter for appearance, adjudication or criticism any ensemble not found or provided for in the list of approved events.

Please note that doubling of parts is only permitted in Choirs (except Percussion Choirs) and ensemble’s instrumentation must properly represent the intentions of the score. Instrumental substitutions are not allowed. EX: A tenor sax may not substitute for a euphonium in a Brass Choir. It is then no longer a “Brass” Choir.

Instrumental Events

***With or without piano accompaniment.**

Event No./Classification/Approved Instruments

1. Flute Ensemble

Any ensemble consisting of 2-8 members of the Flute family.

2. Clarinet Ensemble

Any ensemble consisting of 2-8 members of the Clarinet family.

3. Double Reed Ensemble

Any ensemble consisting of 2-8 members of the Double Reed family.

4. Saxophone Ensemble

Any ensemble consisting of 2-8 members of the Saxophone family.

5. Mixed Woodwind Ensemble

Any ensemble consisting of 2 or more unlike Woodwind-family instruments as determined by the score. Limit of 2-8 in ensemble.

6. Wind/String Ensemble

Any ensemble consisting of a combination of 2-8 Woodwind, Brass and String instruments as determined by the score.

7. Mixed Wind Ensemble

Any ensemble that combined 2-8 Woodwind and Brass instruments as determined by the score.

8. Flute Choir

9 to 20 players. The instrumentation used must be Flutes as indicated in the composition. No substitutions of instruments permitted. Percussion may be used if it is an integral part of the score. A student director may be used in these groups; however, the student conductor will not be counted in the 9 to 20 player limit, but the conducting technique will be considered in the final rating of the ensemble.

9. Clarinet Choir

9 to 20 players. The instrumentation used must be clarinets as indicated in the composition. No substitutions of instruments permitted. Percussion may be used if it is an integral part of the score. A student director may be used in these groups; however, the student conductor will not be counted in the 9 to 20 player limit, but the conducting technique will be considered in the final rating of the ensemble.

10. Woodwind Choir

9 to 20 players. The instrumentation used must be as specified by the instruments indicated in the composition. No substitutions of instruments permitted unless permitted in the score. Percussion may be used if it is an integral part of the score. A student director may be used in these groups; however, the student conductor will not be counted in the 9 to 20 player limit, but the conducting technique will be considered in the final rating of the ensemble. Groups composed of clarinets only may not participate in this event.

11. Trumpet Ensemble

Any ensemble consisting of 2-8 members of the Trumpet family as determined by the score.

12. Horn Ensemble

Any ensemble consisting of 2-8 French Horns as determined by the score.

13. Trombone Ensemble

Any ensemble consisting of 2-8 Trombones as determined by the score.

14. Tuba/Euphonium Ensemble

Any ensemble consisting of 2-8 Tubas or Euphoniums as determined by the score.

15. Mixed Brass Ensemble

Any ensemble consisting of 2 or more unlike Brass Instruments, limit of 2-8 in ensemble, as determined by the score.

16. Brass Choir

9 to 20 players. The instrumentation used must be as specified by the instruments indicated in the composition. No substitutions of instruments permitted unless permitted in the score. Percussion may be used if it is an integral part of the score. A student director may be used in these groups; however, the student director will not be counted in the 9 to 20 player limit, but the conducting technique will be considered in the final rating of the ensemble.

17. String Ensemble

Any ensemble of 2-8 like or unlike members of the String family.

18. String Choir

9 to 20 players. The instrumentation used must be as specified by the instruments indicated in the composition. No substitutions of instruments permitted unless permitted by score. A student director may be used in these groups; however, the student director will not be counted in the 9 to 20 player limit, but the conducting technique will be considered in the final rating of the ensemble.

19. Keyboard Percussion Ensemble

Any ensemble using 2-8 Keyboard Percussion instruments as determined by the score. (Exceptions will be made if the literature dictates.)

20. Membrane Percussion Ensemble

Any ensemble using 2-8 Membrane or Non-Keyboard Percussion instruments.

21. Mixed Percussion Ensemble

Any ensemble using 2-8 unlike Keyboard and Membrane Percussion instruments as determined by the score.

22. Hand Bell Choir

Any ensemble comprised of 6-20 Hand Bells or Choir Chimes.

23. Percussion Choir

9 to 20 players. The instrumentation used must be as specified by the instruments indicated in the composition. No substitutions of instruments permitted unless permitted in the score. A student director may be used in these groups; however, the student director will not be counted in the 9 to 20 player limit, but the conducting technique will be considered in the final rating of the ensemble. (Doubling on parts is not allowed in Percussion Choirs.)

24. Piano Duets

This ensemble shall consist of two performers using bona fide duet literature. All entries must be able to be performed on one instrument. There will NOT be two pianos available for this event.

25. Random Instrumentation

Any ensemble of 2-8 instrumentalists that does not fall into any other event. No improvisation will be permitted.

NOTE: Please notify the manager if percussion is required in events 8, 9, 10 or 16.

VOCAL EVENTS

150	Treble Ensemble
151	Bass Ensemble
152	Mixed Ensemble
153	Madrigal Group
154	Chamber Choir

9. Madrigal Singing:

The general rules in Article VIII-B shall apply to Madrigal Singing, except that a Madrigal group shall be composed of a mixed group of not less than eight nor more than twenty performers. Other special requirements for this event are:

- Madrigal music must be presented.
- The group may appear in special period costume.
- The singing is to be performed in the traditional and generally accepted manner of Madrigal Singing.
- Numbers are to be presented without accompaniment.
- The points earned toward a sweepstakes award (Art. X-C) shall be the same as for all other ensemble events.

10. Chamber Choir:

The general rules in Article VIII-B shall apply to Chamber Choir, except that the group shall be composed of a mixed group of not less than eight nor more than twenty singers. Other special requirements for this event are:

- Chamber Choir music must be presented.
- Music may be performed either unaccompanied or with up to 8 instrumentalists. Instrumental support must be students with the exception of the keyboard player who may be an adult.
- The points earned toward a sweepstakes award (Art. X-C) shall be the same as for all other ensemble events.
- A student conductor may be used in these groups; however, the student conductor will not be counted in the 8 to 20 player limit.

11. Ensemble Events:

All ensembles events must represent and demonstrate a clear independence of parts. Therefore, a "duet" must represent two-part music; a trio, three-part; and so on. Failure to perform such literature will result in lowering the rating one level.

12. Determination of Ratings:

To determine the rating for each ensemble performance, contest judges shall utilize the adjudication form distributed by the IHSA Office to contest managers.

13. Substitutions. (See Art. III-E-2-c)

14. Selections. (See Art. VIII-C)

15. Limitations. (See Art. III-E-2)

16. Accompaniment. (See Art. VIII-D)

17. Violations and Penalties. (See Art. VIII-E)

C. SELECTIONS

1. Required Selections:

There will be no required numbers for any solo or ensemble events. Soloists and ensembles must choose their own selections.

2. Suitability of Selections:

The choice of appropriate selections, suited to the performers' capabilities and in keeping with the classification of the schools they represent, is always an important factor in the awarding of ratings. In this context, music may be performed in a key other than that in which it is written, provided it is suitable to the contestant(s). Selections with vulgar, foul and inappropriate language will be disqualified from the Music Contest. Solo/Ensemble events shall consist of a minimum of 64 published measures or a performance time of at least 90 seconds.

3. The Association assumes no responsibility for the payment of any royalties or other fees in connection with the performance of any music.

D. ACCOMPANIMENT

1. Requirements:

Soloists and ensembles need not be accompanied unless the accompaniment is required by the score. If a performance is accompanied, accompaniment must be by piano, harp or any other instrument designated for accompaniment in the score. It may not be mechanically recorded with the exception of the use of the Vivace accompaniment system. This computer program has been approved for use at IHSA contests. However, if you plan to enter Vivace events, the contest host must be notified at least two weeks in advance. The school entering such events is responsible for supplying the necessary equipment for a quality performance using the Vivace system. It is recommended that the Contests Host set up a separate Vivace room if entries warrant. The fact that an entry will be accompanied and the name of the accompanist **MUST** be indicated on the entry card. Piano solos may not be accompanied.

2. Accompanists:

It is strongly recommended that students be used as accompanists in all events for which accompaniment is provided. However, non-students, including directors, may serve as accompanists if necessary.

3. On-stage Tuning:

Accompanists may help with on-stage tuning for solos and ensembles, but

assistance by anyone else is prohibited.

4. Conflicts:

It is recommended that no accompanists be permitted to play for more than six events during any contest day and schools should permit this maximum number only in cases where no one else is available.

E. VIOLATIONS AND PENALTIES

1. For violations of the following rules and regulations, the adjudicator shall lower the rating of an individual or group by one step.

- Failure to submit required score to adjudicators (Arts. VIII-A-4 and VIII-B-3). Individual parts do not constitute a score.
- Failure to supply each judge with a score for each selection with each measure numbered.
- Failure to perform with accompaniment in the event accompaniment is required by the score.
- Entries exceeding the time limit up to one minute or entries not satisfying the minimum time and/or measure requirements.
- Use of music in a vocal solo or ensemble performance.
- Failure of an ensemble to represent independent parts for each performer (Art. VIII-B-11).

2. For violation of the following rules and regulations, the penalty shall be disqualification:

- Violation of rules of eligibility (Art. III-D). Discovery of the participation of an ineligible student with an ensemble or organization shall result in the disqualification of the group with which he/she participated. Any additional penalty upon the school for violation of eligibility provisions shall be determined by the IHSA Board of Directors.
- Violation of substitution rule (Art. VIII-C).
- Violation of the rules limiting the number of events in which a student may participate (Art. III-E-2). If a student participates in too many events, the school shall be disqualified in those events in which the student involved was not officially entered. If, however, the student was actually entered in an excess number of events and this was not discovered by the local manager prior to the contest, the school shall be disqualified in the last programmed event or events in which he/she illegally participated.
- For violation of III-E-2 the disqualification shall be the last programmed event or events in which the offending student participated illegally.
- A non-student performing in an ensemble or sonata event, regardless of school classification (Art. III-D-4).

f. Individuals or groups appearing in an event not listed as an approved event (Arts. VIII-A-3 and VIII-B).

g. Soloists and ensemble members wearing medals or ribbons (Arts. VIII-A-5 and VIII-B-5).

h. Violation of rules governing repetition of selections (Arts. VIII-A-6 and VIII-B-6).

i. Violation of maximum or minimum personnel rules for ensembles (Art. VIII-B-1, VIII-B-9 and VIII-B-10).

j. Ensemble performing under direction of adult or student, except Nos. 8, 9, 10, 16, 19, and 22 (Art. VIII-B-7).

k. Entries exceeding the time limit by one minute or more.

l. Selections with vulgar, foul and inappropriate language will be disqualified from the Music Contest.

3. For an incorrectly classified instrumental ensemble, other than within the scope of Art. VIII-E-2-f above:

a. For cases of understandable confusion in instrumentation, not in eligibility, and for borderline cases, especially in genuine misinterpretation of the integrality of a concerned piano part, the adjudicator may adjudicate the group in reference to a corrected classification if the school has not already entered two in the corrected classification. Otherwise, the entry shall be disqualified.

b. For cases of obviously willful violation in instrumentation, or in eligibility of instruments, or in an attempt to substitute a piano accompaniment for integral part, the penalty shall be disqualification; except that it shall not be done in immediate public embarrassment of the players.

c. In all instances covered in 1 and 2 above, the adjudicator shall plainly indicate his/her action upon the adjudication blank and forward it directly to the local contest manager.

4. Violations frequently can and should be prevented by the local contest manager. Entries made in violation of any rule should be refused by the manager, except that the local manager is relieved of any responsibility, real or inferred, for the correct classification of instrumental ensembles-although he/she may at will check them as a feature of management and refuse violations. However, if an illegal entry is not discovered and acted upon by the manager and is then discovered by the adjudicator before or during the performance, the student or group shall be penalized as provided in 1, 2 and 3 above.

5. If a violation which involves disqualification is discovered and reported after the close of contest, any awards won as the result of ratings in the disqualified events shall be surrendered to the IHSA.

IX. TOURNAMENT POLICIES

A. Damage to Property or Equipment:

If contestants or people from any school entered in a state series are found guilty of carelessness or maliciously breaking, damaging or destroying property or equipment belonging to the host school, such school shall be held responsible for costs incurred in replacing or repairing such property or equipment.

B. Tobacco Products:

No music director, student or any other person connected with a school shall be permitted to use tobacco products during the contest, either during warm ups or performances.

C. Use of Inhalers:

A student with asthma may possess and use his/her medication during an IHSA competition, while under the supervision of school personnel, provided the school meets the outlined procedures of self administration in the Illinois School Code.

D. Alcoholic Beverages and IHSA State Series Events:

The possession, distribution, sale and or consumption of alcoholic beverages are prohibited at the site and on any affiliated property of any IHSA state series contest. State series hosts are required to make all state series contest sites and any affiliated property, including parking lots, fan accommodation areas, and other school or event venue property, alcohol free zones on the date or dates of any IHSA event being held at the site. Violation of this policy by an event host will subject the host to a penalty for violation of IHSA By-law 2.020. Such penalty may include but not necessarily be limited to prohibition against subsequent event hosting assignments. Violation of this policy by a non-hosting member school will subject the school to penalty for violation of IHSA By-law 2.020. Patrons of any IHSA state series contest determined to be in violation of this policy will be removed from the premise, and law enforcement officials will be called as warranted. No ticket refunds will be granted in such cases.

E. Responsibility for theft or other losses:

The IHSA will not be responsible for loss or theft of any personal property during the course of a contest. The Association's regular policy shall apply to loss or damage to school property.

X. RATINGS AND AWARDS

A. Ratings:

Ensembles and solos in the respective music events shall be rated in five divisions as follows:

Division I Division IV
Division II Division V
Division III

Judges may elect to use tenths of points in their ratings. Scores will not be rounded.

B. Solo and Ensemble Awards:

Medals shall be awarded to soloists and members of ensembles (including student directors) receiving a Division I Rating in Sweepstakes and Non-sweepstakes events. Comments only events are not eligible for medals. These awards may be ordered through A & M Products by each school following the contest. They can be reached at 815-875-2667. The IHSA also provides second place medals for purchase through A & M Products. The deadline for ordering medals is June 15, 2009. There will be no charge for orders for Division I medals. Division II medals are \$1.50 each and payment must accompany Division II orders before the order will be processed. The order forms can be found in this rules book.

Medals shall also be available for purchase by students acting as accompanists for ensembles or instrumental choirs winning a Division I rating. Such medals may be purchased through A & M Products by the competing school of the student entitled to the award. The cost of medals is \$1.50 each. When ordering, please state "Accompanist Medals" and enclose payment. No medals are awarded for "comments only" entries.

C. Sweepstakes Award:

1. Winner, runner-up and third place sweepstakes awards will be distributed to the three (3) schools in each class throughout the state which earn the greatest number of points in solo, ensemble and organization competition. Points will be assigned by each local manager for solo and ensemble performance ratings according to the following scale:

Events	Points	
	Division I	Division II
Ensembles	6	3
Solos	6	3

No sweepstakes points are earned with "non-sweepstakes" or "comments only" entries.

2. After the conclusion of the contests, managers will report the point totals of all schools to the IHSA Office. The points will then be tallied according to classifications and team awards will be presented to the three schools in each class that received the highest scores. The awards will be shipped directly from the manufacturer to the schools. In case of ties, duplicate awards will be presented.

D. Best of the Day Award:

Each judge will have the opportunity to select that event from their room, which they have determined to be the “best performance” of the day. This can be a soloist or an ensemble, but it is meant to represent only the very best performance. NO SWEEPSTAKES POINTS WILL BE ADDED FOR THIS DESIGNATION. The IHSA Office will produce Certificates, which should be signed by the Judge and the Contest Manager and sent home with the students. Judges will be instructed by the Contest Manager of this award and should carefully consider its presentation. Each judge should present this Award to the Contest Manager at the conclusion of the day.

XI. JUDGING

A. Selection of Judges:

The local manager of each contest shall be responsible for the selection of suitable qualified judges. In selecting such judges, however, the local manager shall secure the advice and recommendations of his/her Contest Committee. Judges shall be music educators experienced in the area(s) they are assigned to judge. Undergraduate students shall not be used as judges. It is recommended that local managers select judges for their contests from the list prepared and distributed by the IHSA Office. Judges should be selected from as near the contest center as possible. Every attempt should be made to not use judges in the same events in any given contest in successive years. All judges shall be required to complete online registration and certification prior to the adjudicating of contest(s).

B. Duties of Judges:

All events shall be rated on the official adjudication blanks furnished by the State Association. Instructions to adjudicators, which are designed to express in a general way the attitude of the Board of Directors and its music advisors toward the adjudication of IHSA Music Contests, can be found on page 1 of this Rules Book. Judges are required to follow these instructions.

Judges shall base their adjudication upon the actual achievement of competitors as given in the instructions to adjudicators rather than upon any alleged desire to encourage to better effort or to express sympathy for an honorable attempt.

Contest adjudicators are not to consider their personal likes, dislikes or preferences of music literature in their evaluation of contest performances.

C. Restrictions on Division I Ratings:

Judges shall award Division I ratings to only those competitors manifesting the very highest level of achievement. Indiscriminate awarding of Division I ratings must be avoided.

D. Number of Judges:

Performance in solo and ensemble events shall be rated by one judge.

E. Judges’ Fees:

Judges for the Solo/Ensemble contest shall be compensated on the following scale:

BASE FEE-\$125.00 for 5 hours of actual judging.

SECONDARY FEE-\$20.00 per hour for each hour of judging beyond 5 at any given contest.

PER DIEM-\$25.00 for meals and transportation.

2009-10 Organization

Music Contest Terms and Conditions

In accordance with Section 1.450 of the IHSA Constitution, the Board of Directors has approved the Terms and Conditions governing the 2009-2010 IHSA Music Organization Tournament Series.

I. SCHOOL CLASSIFICATION

A. Classes:

Member schools shall be classified for participation in the contests upon the basis of the actual high school student enrollment figures reported to the State Board of Education on the Fall Housing Report on September 30, 2008, as follows:

Class AA	1601 or over
Class A	801 to 1600
Class B	351 to 800
Class C	191 to 350
Class D	1 to 190

B. Participation:

All entries representing member schools shall participate in the contest only in their respective school's classification, except the school may participate in a higher (not lower) classification with the permission of the Executive Director of the IHSA. The request to participate in a higher classification is available online at IHSA.org and is due back to the IHSA office by Sept. 1.

II. DATE AND SITES

A. Date: State Organization Contests will be held on the Friday and Saturday of Week 41 of the Standardized Calendar (April 16- 17, 2010). Adjustments will be made for Easter. Individual sites can make adjustments due to spring break conflicts.

B. Sites: Contest sites will be posted on the IHSA website. Organization hosts are expected to offer their services on Friday and Saturday.

III. ON-LINE ENTRIES, LATE ENTRIES, WITHDRAWAL PROCEDURES, ELIGIBILITY, AND ENTRY INFORMATION

The Policy for Original Entry Deadlines, Late Entries, and Late Withdrawals shall be the policies and procedures regarding entry for all IHSA-sponsored sport/activities included in the 2009-2010 Policies and Procedures.

A. On-line Entries

All member schools must enter their school into the state series competition through the IHSA Schools Center on the IHSA Website at www.ihsa.org. The deadline for entry is

November 1, 2009. The 2009-10 Entry Policies and Procedures outlining the online entry procedures for all IHSA-sponsored tournaments can be found in the Schools Center on the IHSA website.

B. Late Entries

Any attempt to enter a sport or activity online after the established deadlines will be denied. Schools that wish to enter after the deadline will be considered late. To be considered for late entry, the Principal/Official Representative must contact the IHSA administrative officer in charge of that sport or activity. The penalty for late entry shall be a payment of \$100.00 for that sport/activity by the school.

C. Breach of Contract By-law 6.041 (Withdrawal Procedure)

To withdraw without penalty, the Principal must notify the IHSA Office, in writing, of the school's withdrawal, on or before **February 1, 2010**.

If a school withdraws after February 1, 2010 but prior to payment of event fees to the contest manager, it will incur a \$100 penalty.

Failure to send any entry information and/or fees to the contest manager and/or non-participation on contest day after the school submits the entry to the IHSA (and does not withdraw through the official procedures) is viewed the same as withdrawal from Organization contest and penalized as above.

Withdrawal after payment of event fees to the contest manager will result in forfeiture of all fees paid.

D. Eligibility

1. School Eligibility

All member schools in good standing may enter soloists and/or ensembles in Music Organization under the provisions of IHSA By-law 4.071. The principal is the official representative of his/her school in all interscholastic activities, and the responsibility for seeing that all students from his/her school entered in Music Contests are eligible under the rules shall rest with the principal. All correspondence with the IHSA Office must be conducted through the principal. Entry into the contests may be denied to any school which, since last year's contests, has participated in an unsanctioned interscholastic music activity.

2. High School Students Eligible:

To represent a school in the statewide Music Contests, students must conform to the Activities By-laws of the Association found in the Official Handbook and on page 2 of this Rules Book. Students shall be entered based on the recommendation of the music director.

NOTE: Be sure to apply the provisions of By-law 4.022, relative to academic standing.

3. Grade and Junior High School Students Eligible:

Any student of a grade school or a junior high school in the State of Illinois shall be eligible to participate with the instrumental and vocal organizations representing a Class B, C or D member school or in the string section of the orchestra from a school in any class if he/she is a regular member of the orchestra, provided, however, that the principal of the competing member school shall be responsible for the good conduct of such grade and junior high school students during a contest, and provided further, that the principal of said member school shall certify that, at the time of registration for said participation, said student:

a. Is a bona fide student of a grade school or a junior high school located in the district of the member school.

b. Has a passing grade in at least three fourths (3/4) of his/her academic subjects.

NOTE: No grade school or junior high school student may compete as a soloist. Instrumental and vocal ensembles composed in part of grade or junior high school students may compete, if these students are members of their respective high school organizations.

4. Non-Student Participants:

Non-students may only be used as accompanists. (See Art. VIII-J-2).

E. Entry Information (List of Participants):

1. Online Entry System (List of Participants)

Schools are required to complete the **Music Organization List of Participants online (This is in place of downloading the Music program)**. Log on to www.ihsa.org and click on the Schools Center link. Enter your school's four-digit School ID number and password which you can obtain from your Principal or Athletic/Activities Director. On the next page, go to the "Sports and Activity Tracker" area, find the row that lists the correct tournament, and click on the "LOP (List of Participants)" link under the "Required Data Forms" heading. Please follow the instructions shown on the screen as you fill in the necessary information. **The deadline for entering the "List of Participants" for Music Organization is March 12, 2010.**

After completing the "List of Participants" online, print out a copy of the completed entry form for your records. It is no longer necessary to e-mail your information to your site manager. The information will be placed in a database and sent to the manager. **Your event fees**

should be made payable to the host school and mailed to the manager of the contest to which the school has been assigned no later than March 12, 2010. If you experience any problems, please call the IHSA Office at 309-663-6377 and ask for Carol Carr.

2. Limitations on Entries

A student may participate in no more than one (1) performing group in each event in the Organization contest, regardless of school classification.

3. Changes in Entries

Changes in entries may only be accepted at the discretion of the contest manager.

4. Violations and Penalties (See Art. VIII-L).

IV. HOST FINANCIAL ARRANGEMENTS

A. Contest Event Fees:

Contest fees for the Organization Contest shall be \$75.00 each for the first band, choir, and orchestral group. Additional groups (i.e. second band or choir) will be \$50.00. For example, Morton High School enters two concert bands, one jazz band, one mixed choir, one treble choir, and a string orchestra. The fees would be \$225.00 for the "first" groups and \$150.00 for the three additional groups. **Contest Event Fees shall be made payable to the host school and mailed to the manager of the contest to which the school has been assigned no later than March 12, 2010.**

B. Penalty Fees:

Contest Event Fees shall be made payable to the host school and mailed to the manager of the contest to which the school has been assigned no later than March 12, 2010. Information that is not complete may not be accepted (discretion of the manager). Following the March 12th deadline, changes in entries may be made only in accordance with Article III-E-3.

1. Late Entry.....\$100.00

2. Withdrawals.....\$100.00

a. The penalty fees for late contest entries shall be paid directly to the host school and mailed to the host school manager. Any individual organizational group withdrawal(s) after the event fees have been paid to the contest manager (March 12, 2010) will result in forfeiture of all fees paid.

b. To withdraw all organizational groups without penalty, the principal (official IHSA school representative) must notify the IHSA office, in writing, on or before February 1, 2010.

c. The withdraw organizational groups from contest after February 1, 2010 and prior to payment of event fees to the contest manager's school, the principal (official IHSA school representative) must notify the IHSA office in writing and the withdrawing school will be assessed the \$100.00 late withdrawal fee.

d. Failure to send any entry information to the contest manager and or non-participation on contest day after the school submits the original entry to IHSA (and does not withdraw through official procedures) is viewed the same as withdrawal from the Organization contest and shall be penalized as described above. The school will be responsible for all penalty fees due to breach of contract. (Late withdrawal fee off \$100.00 and all original event entry fees per organizational group entered of \$75.00/\$50.00)

e. Any school not paying fees should be reported to the IHSA.

C. Judges' Fees:

Judges for the Organization contest shall be compensated on the following scale:

BASE FEE-\$125.00 for 5 hours of actual judging.

SECONDARY FEE-\$20.00 per hour for each hour of judging beyond 5 at any given contest.

PER DIEM-\$25.00 for meals and transportation.

V. TOURNAMENT ASSIGNMENTS

Assignments for Music Organization can be found on-line at www.ihsa.org after Nov. 1, 2009. Assignments will be made on the basis of location and equality in the number of entries.

VI. TOURNAMENT STRUCTURE AND TIME SCHEDULES

A. Responsibility of the Local Manager:

1. The principal is the local manager: In all cases in which a member school is selected as a contest site, the principal of the high school shall automatically assume entire responsibility for the details of the contest under the general directions of the Board of Directors and the Executive Director of the Association. The principal may delegate the authority to manage the contest to another staff member. In case the site is not located at a member school, then the IHSA Board of Directors shall appoint a local manager with like responsibilities.

2. Contest Committee: The manager of each contest shall appoint a Contest Committee. The Committee shall be composed of not less than three directors of music activities located within the nearby area of the contest center and should include at least one director of each of the three main contest activities, namely, band, orchestra and chorus. Names of the Committee members shall be made known to the directors of participating schools at each contest prior to the date of the contest. The Contest Committee:

a. Is required to assist the contest manager in the selection of adjudicators for the contest;

b. Shall advise the contest manager in resolving any question of rules interpretation or any other problem on the day of the contest;

c. Shall assist the contest manager in any other way he/she determines.

3. Unusual situations: The local manager shall have authority to take proper action in the case of any unusual situations arising during the contests. However, no part of these Terms and Conditions may be set aside. In all cases involving an interpretation not specifically covered by the rules, the contest manager shall consult with the Contest Committee before the announcement of results or the presentation of awards.

4. Programs: The local manager shall, with the advice of the Contest Committee, arrange, prepare and duplicate a program and time schedule for his/her contest. Insofar as is possible, the manager will maintain this schedule. However, if because of cancellations, conflicts, or for other reasons the program runs ahead of itself, he/she may permit or request available contestants or groups to appear in advance of their program time. He/she shall not require them to appear earlier.

5. Manager's Information: The IHSA Office will post any pertinent instructions and management information on the Music menu page at www.ihsa.org.

6. Directors Meetings: The local manager shall schedule a time for a meeting of directors from participating schools. At this meeting, a recorder shall be appointed to prepare a record of the comments and recommendations for improvement in the contest program for submission to the IHSA office by the manager following the contest. A questionnaire or other method of collecting director's comments may be implemented as an alternative to the meeting.

B. Responsibility of Individual School.

The principal is the official representative of his/her school in all interscholastic activities and the responsibility for seeing that all students from his/her school entered in the Music Contests are eligible under the rules shall rest with him/her. All correspondence with the IHSA Office should be conducted through the principal.

In each contest in which his/her school is represented, the principal shall have present an adult, preferably a member of the faculty, who shall supervise and be responsible for the conduct of the participants and other persons from the school. Failure to comply with this provision shall result in disqualification of its contestants.

VII. ADVANCEMENT OF WINNERS

There is no advancement of winners in the Music Organization Contest.

Ratings:

Organizations in the respective events, including Show Choir, Jazz Choir, Jazz Band

and Jazz Combos shall be rated in five (5) divisions as follows:

- Division I
- Division II
- Division III
- Division IV
- Division V

Judges may elect to use tenths of points in their ratings. Scores will not be rounded.

VIII. MUSIC ORGANIZATION CONTEST RULES

A. Number of Participants:

A member school may enter two (2) organizations in each of the following events: Band, Orchestra, Mixed Chorus, Bass Chorus and Treble Chorus. In addition, a school may enter one (1) Show Choir and one (1) Jazz Choir and one (1) Jazz Band and one (1) Jazz Combo in the Organization contest.

In the event a school enters two (2) organizations in an event, only the highest rated performance is eligible to be counted toward Sweepstakes points. Furthermore, no individual student may participate in more than one (1) organization in an event. For example, no student may participate in more than one (1) band and/or one (1) orchestra on the same instrument. Students may perform in any vocal event of which they are actively enrolled. Organizations shall be limited to the following enrollment of participants:

1. Band: No minimum or maximum.
2. Orchestra: No minimum or maximum.
3. Choruses: 10 minimum; no maximum.
4. Show Choir: 10 minimum; 32 maximum.
5. Jazz Band: 12 minimum; 25 maximum.
6. Jazz Choir: 10 minimum; 32 maximum.
7. Jazz combo: 3 minimum; 11 maximum.

NOTE: The number of students present and performing in a group at the contest site shall be the number used to determine compliance with these limitations. Groups that fall below the minimum numbers may still perform and receive comments only. They may not be eligible for sweepstakes points.

B. Program:

1. Band: Each band shall perform at least twelve (12) minutes and no more than twenty (20) minutes of music. The order of the selections in the concert portion is left to the director's discretion. See section E for more specific information related to performance time limitations.

a. Scores are required.

2. Orchestra: Each orchestra shall perform at least twelve (12) minutes and no more than twenty (20) minutes of music. The selection(s) in the concert portion will be left to the director's discretion. Piano is not permitted as an instrument in the orchestra unless it is an integral part of the composition played.

a. Scores are required.

3. Chorus: Each chorus shall perform at least two (2) selections with a minimum time of seven (7) minutes and a maximum time of ten (10) minutes. No director or accompanist may sing with the chorus, either in the sight reading or concert portion of the performance. All selections must be sung from memory. All Class B, C, or D choruses (bass, treble and mixed), regardless of classification, must perform at least three-part music. All Class A or AA treble or bass choruses must perform at least three-part music, while Class A or AA mixed choruses must perform at least four-part music.

a. Scores are required.

4. Show Choirs/Jazz Choirs: Special rules governing this event are:

a. Accompaniment may be provided by as many instrumentalists as indicated by the score.

b. It is recommended that two (2) selections of varying styles be performed.

c. Show Choirs/Jazz Choirs may perform any number of parts in their selections.

d. Jazz/Show choir may be conducted by their directors.

e. Risers, a microphone for solos, a 4 plug AC box, and a piano shall be provided by the host school. All other equipment must be provided by the performing group.

f. A total of fifteen (15) minutes will be allotted each group for assembly, set-up, tuning and performance.

g. Show Choirs will be judged primarily on musical performance. Choreography and showmanship will also be categories for evaluation. All Show Choirs will be evaluated by the scale, which includes choreography. Any Show Choir, which does not use choreography, shall receive zero (0) points in the choreography category on the judge's ballot.

h. Jazz Choirs will not be evaluated on choreography. Judges are to use the rating scale without choreography on the adjudication form.

i. Groups may wear special costumes.

j. The points earned toward a sweepstakes award (Art. X-C) shall be the same as for any Organization event.

k. Scores are required for Jazz Bands, Jazz Combos, Jazz Choirs and Show Choirs.

5. Jazz Bands/Jazz Combos: Jazz Bands shall be composed of a group of not less than twelve (12) nor more than twenty-five (25) performers. Jazz Combos shall be composed of a group of not less than three (3) nor more than eleven (11) performers. Other special rules governing this event are:

a. The following will be provided on stage by the host school: Risers, chairs and stands; an acoustic piano; a 4-plug AC box; a bass amplifier; three (3) stage microphones. All other equipment must be provided by the performing group.

b. Jazz Bands and Jazz Combos may include any instruments in their performing group.

c. A total of thirty (30) minutes will be allotted in the contest program for each Jazz Band/Jazz Combo. Assemble, set-up, tuning, performance and take-down must occur within this total time limit. Performance time shall be limited to twenty (20) minutes of this total time limit.

d. One "swing-style" (unequal division of the beat) number must be included in each Jazz Band's performance. There is no other limitation or requirement in respect to the selections to be performed.

e. Jazz Bands and Jazz Combos will be judged primarily on the musical performance of the group. Improvisation, or Creativity/Musicianship of soloists, will also be a category for evaluation.

f. Scores are required for Jazz Bands, Jazz Combos, Jazz Choirs and Show Choirs.

g. Groups may wear special costumes.

6. All numbers performed by any participating organization will be judged.

C. Repetition:

Music shall not be repeated that was performed in the last three (3) years.

D. Sight Reading: Sight reading has been removed from the IHSA Music Organization Contest.

E. Performing Time:

1. Each organization will be allowed a one (1) minute "warm-up" or "run-through" prior to the beginning of their first selection.

2. Band and Orchestra: Organizations shall consume at least twelve (12) minutes and no more than twenty (20) minutes from the first note of their first selection to the last note of their last selection with the time clock running continuously.

3. Vocal: Choruses shall consume at least seven (7) minutes and no more than ten (10) minutes from the first note of their first selection to the last note of their last selection with the time clock running continuously.

4. Show Choirs/Jazz Choirs shall consume no more than fifteen (15) minutes total for assembly, set-up, performance and exit.

5. Jazz Bands and Jazz Combos shall consume no more than thirty (30) minutes total for assembly, set-up, and a twenty (20) minute performance time and exit.

6. Directors should proceed promptly from one selection to the next without waiting for a signal from the adjudicators.

7. Local managers must provide timekeepers for each performance.

F. Instrumentation:

Band and Orchestra: No specific rating will be given by the judges for instrumentation. However, any wide deviation from standard

instrumentation will affect the general rating to whatever extent it affects the balance and general effect of the performance.

G. Scores:

Directors shall supply to each judge one conductor's score of the organization's selections with measures numbered. Photocopies of copyrighted music may be provided to judges only in an "emergency". "Emergency" shall be defined as cases in which:

- a) music is out of print with no new score available; or
- b) purchased music copies are backordered.

Written evidence, in the form of a school purchase order and/or a written statement from the supplier, shall be required to document the "emergency". The penalty for violation shall be reduction of rating by one (1) step. To determine the rating for each performance, contest judges shall utilize the adjudication forms distributed by the IHSA Office to contest managers. Judges are definitely instructed not to permit performance to begin until they have been supplied with such scores. However, if original or unnumbered scores are not available, the organization may perform with the understanding that its rating will automatically be lowered by one step.

H. Determination of Ratings:

1. Organizations, Bands, Orchestras, Choruses:

To determine the final rating for each organization, the contest manager shall total the three individual judge ratings and compare the total to the following scale to determine the rating:

TOTAL OF: 3-4 = I 12-Over = IV
 5-7 = II

8-11 = III

2. Show Choirs, Jazz Choirs, Jazz Bands and Jazz Combos:

To determine the rating for each Show Choir, Jazz Choir, Jazz Band and Jazz Combo performance, contest judges total the individual judge ratings and compare the total to the following scale to determine the rating.

TOTAL OF: 3-4 = I 8-11 = III
 5-7 = II 12-Over = IV

I. Selections

1. Suitability of Selections:

There will be no required numbers for bands, orchestras and choruses, or for Show Choirs/Jazz Choirs.

The choice of appropriate selections, suited to the performers' capabilities and in keeping with the classification of the schools they represent, is always an important factor in the awarding of ratings. In this context, music may be performed in a key other than that in which it is written, provided it is suitable to the contestant(s). Selections with vulgar and/or inappropriate language will be disqualified from the Music Contest.

If orchestras represent 25 percent or more of the performing ensembles, then one of the members of the instrumental music judging panel should have an orchestral background.

2. The IHSA assumes no responsibility for the payment of any royalties or other fees in connection with the performance of any music.

J. ACCOMPANIMENT

1. Requirements:

Organizations need not be accompanied unless the accompaniment is required by the score. If a performance is accompanied, accompaniment must be by piano, harp or any other instrument designated for accompaniment in the score. Recorded accompaniment may not be used. For Show Choirs, Jazz Choirs accompaniment may be provided by zero to seven (0-7) instrumentalists. All instrumentalists must be eligible students, except an adult may play the piano as the accompanist.

2. Accompanists:

It is strongly recommended that students be used as accompanists in all events for which accompaniment is provided. However, non-students, including directors, may serve as accompanists if necessary.

3. Conflicts:

Contest managers are not required to resolve conflicts created by organizations using the same accompanist.

K. Limitations

A student may participate in no more than one (1) performing group in each event in the Organization contest, regardless of school classification.

L. Violations and Penalties

1. For violations of the following rules and regulations, the penalty shall be the lowering of the rating by one (1) step:

- a. Failure to submit required score to adjudicators (Art. VIII-G).
- b. Failure of an organization to present the required number of minutes (Art. VIII-B).
- c. Entries exceeding the time limit up to one (1) minute (See Art. VIII-E).
- d. Failure to supply all judges with a score for each selection with the measures numbered.
- e. Use of music in a vocal organization performance.
- f. Failure to perform with accompaniment in the event accompaniment is required by the score.
- g. Failure to perform the required number of parts in a vocal organization performance. (Art. VIII-B-3).
- h. Failure to adhere to sight reading rules.
- i. Failure to adhere to the posted time schedule in a reasonable manner.

2. For violation of the following rules and regulations, the penalty shall be disqualification:

a. Violation of rules of eligibility (Art. III-D): Discovery of the participation of an ineligible student with an ensemble or organization shall result in the disqualification of the group with which he/she participated. Any additional penalty upon the school for violation of eligibility provisions shall be determined by the IHSA Board of Directors.

b. Violation of the rules limiting the number of events in which a student may participate (Art. III-E-2): If a student participates in too many events, the school shall be disqualified in those events in which the student involved was not officially entered. If, however, the student was actually entered in an excess number of events and this was not discovered by the local manager prior to the contest, the school shall be disqualified in the last programmed event or events in which he/she illegally participated.

c. Violation of rules governing repetition of selections (Art. VIII-C).

d. Violation of maximum or minimum personnel rules. (Art. VIII-A).

e. Entries exceeding the time limit by one (1) minute or more (See Art. VIII-E).

3. Violations frequently can and should be prevented by the local contest manager. Entries made in violation of any rule should be refused by the manager. However, if an illegal entry is not discovered and acted upon by the manager and is then discovered by the adjudicator before or during the performance, the student or group shall be penalized as provided in A and B above.

4. If a violation which involves disqualification is discovered and reported after the close of contest, any awards won as the result of ratings in the disqualified events shall be surrendered to the IHSA.

IX. TOURNAMENT POLICIES

A. Damage to Property or Equipment:

If contestants or people from any school entered in a state series are found guilty of carelessness or maliciously breaking, damaging or destroying property or equipment belonging to the host school, such school shall be held responsible for costs incurred in replacing or repairing such property or equipment.

B. Tobacco Products:

No music director, student or any other person connected with a school shall be permitted to use tobacco products during the contest, either during warm ups or performances.

C. Use of Inhalers:

A student with asthma may possess and use his/her medication during an IHSA competition, while under the supervision of school personnel, provided the school meets the outlined procedures of self administration in the Illinois school code.

D. Alcoholic Beverages and IHSA State Series Events:

1. The possession, distribution, sale and or consumption of alcoholic beverages are prohibited at the site and on any affiliated property of any IHSA state series contest. State series hosts are required to make all state series contest sites and any affiliated property, including parking lots, fan accommodation areas, and other school or event venue property, alcohol free zones on the date or dates of any IHSA event being held at the site. Violation of this policy by an event host will subject the host to a penalty for violation of IHSA By-law 2.020. Such penalty may include but not necessarily be limited to prohibition against subsequent event hosting assignments. Violation of this policy by a non-hosting member school will subject the school to penalty for violation of IHSA By-law 2.020. Patrons of any IHSA state series contest determined to be in violation of this policy will be removed from the premise, and law enforcement officials will be called as warranted.

E. Responsibility for theft or other losses:

The IHSA will not be responsible for loss or theft of any personal property during the course of a contest.

X. RATINGS AND AWARDS

A. Ratings:

Organizations in the respective events, including Show Choir, Jazz Choir, Jazz Band and Jazz Combos shall be rated in five (5) divisions as follows:

- Division I
- Division II
- Division III
- Division IV
- Division V

Judges may elect to use tenths of points in their ratings. Scores will not be rounded.

B. Contest Awards:

1. Organization award plaques may be purchased or a Perpetual Plaque/Bar set up for each Division I rating received may be purchased. The Perpetual Plaque/Bar set takes up less wall space and the costs less. The Standard Large Group Plaque costs \$48.00 each. The Standard Bar Plaque is \$52.00 and the bars are \$11.00 each. After the one time purchase of the Standard Bar Plaque only the bars will need to be purchased each year. The order form can be found in the online entry program or in the Rules Book which can be found on the Music Menu page of the IHSA web site at www.IHSA.org. and must be sent directly to A

& M Products with payment before the order can be processed. A & M Products can be reached at 815-875-2667.

To more quickly expedite the processing of a plaque order, please observe the following:

- a. Print or type all information requested on the order blank.
- b. Be sure the principal signs the order blank.
- c. Remit check or money order, in the amount of \$48.00 for each Standard Large Group Plaque ordered or \$52.00 for each Standard Bar Plaque ordered, plus \$11.00 for each bar (for Standard Bar Plaque) earned. Make check or money order payable to A & M Products and mail with the order blank directly to A & M Products. Payment must be received before your order can be processed.
- d. Make a copy of the order for your records.

e. The deadline for ordering all awards is June 15, 2009.

If the order form is properly completed and sent with the proper payment to A & M Products, you should receive your order within approximately two weeks of the date on which you place the order. Shipment will be by UPS.

C. Sweepstakes Award:

1. Winner, runner-up and third place sweepstakes awards will be distributed to the three (3) schools in each class throughout the state which earn the greatest number of points in solo, ensemble and organization competition.

2. Sweepstakes Scoring: Regardless of its total number of entries in the Organization contest a school may score Sweepstakes points with a maximum of two (2) instrumental and two (2) vocal organizations. The two (2) organizations in each school's entry receiving the best ratings will automatically be recorded as the sweepstakes scoring qualifiers. In the event a school enters two (2) organizations in an event, only the highest rated performance is eligible to be counted toward Sweepstakes points. Thereby, no school may score more than 300 Sweepstakes points (75 x 2 instrumental plus 75 x 2 vocal = 300) in the Organization contest. Points from Organization contest events will be assigned by each local manager for performance ratings according to the following scale:

Events	Points	
	Division I	Division II
Band	75	37.5
Orchestra	75	37.5
Bass Chorus	75	37.5
Treble Chorus	75	37.5
Mixed Chorus	75	37.5
Show Choir/or	75	37.5
Jazz Choir		
Jazz Band	75	37.5
Jazz Combo	75	37.5

3. After the conclusion of the contests, managers will report the point totals of all schools to the IHSA Office. The points will then be tallied according to the classifications and awards will be presented to the three (3) schools in each class that received the highest scores. The awards will be shipped directly from the manufacturer to the schools. In case of ties, duplicate awards will be presented.

XI. JUDGING

A. Selection of Judges:

The local manager of each contest shall be responsible for the selection of suitable judges. In selecting such judges, however, the local manager shall secure the advice and recommendations of his/her Contest Committee. Judges shall be music educators experienced in the area(s) they are assigned to judge. Undergraduate students shall not be used as judges. It is recommended that local managers select judges for their contests from the list prepared and distributed by the IHSA Office.

Every attempt should be made not to use judges in the same events in any given contest in successive years.

B. Duties of Judges:

All events shall be rated on the official adjudication blanks furnished by the IHSA. Instructions to adjudicators, which are designed to express the philosophy or mission of the IHSA Board of Directors and its music advisors toward the adjudication of IHSA Music Contests, can be found on page 1 of this Rules Book. Judges are required to follow all instructions.

Judges shall base their adjudication upon the actual achievement of competitors as given in the instructions to adjudicators rather than upon any alleged desire to encourage a better effort or to express sympathy for an honorable attempt.

Contest adjudicators are not to consider their personal likes, dislikes or preferences of music literature in their evaluation of contest performances.

In the organization events in which three (3) judges are used, the judges shall not confer with each other in reaching decisions on the ratings to be awarded. The local manager of each Organization Contest shall provide one cassette recorder per contest room. Schools desiring taped critiques shall furnish one (1) cassette tape for each taped critique desired to the host school at the time final entries are made. The manager will not provide the tapes for recording. In no case will the IHSA assume any responsibility or liability for equipment used in this method of evaluation.

C. Restrictions on Division I Ratings:

Judges shall award Division I ratings to only those competitors manifesting the very highest level of achievement. Indiscriminate awarding of Division I ratings must be avoided.

D. Number of Judges:

All organization events, including Show Choir, Jazz Choir, Jazz Band and Jazz Combo, shall be rated by three (3) judges.

E. Judges' Fees:

Judges for the Organization contest shall be compensated on the following scale:

BASE FEE-\$125.00 for 5 hours of actual judging.

SECONDARY FEE-\$20.00 per hour for each hour of judging beyond 5 at any given contest.

PER DIEM-\$25.00 for meals and transportation.